

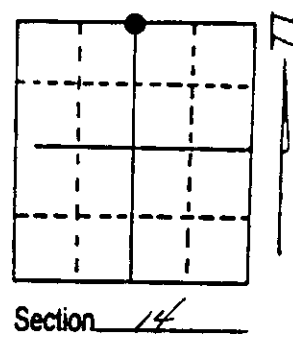
U.S. PUBLIC LAND SURVEY MONUMENT RECORD

Note: This form is intended and designed to fulfill all requirements of Wisconsin Administrative Code, Chapter A-E 7.08 U.S. Public Land Survey Monument Record (3) (a) (b) (c) (d) (e) (f) (g) (h) (i). An additional sheet may be added if necessary to conform with said requirements.

(a) Corner location: Township 37 North
 Range 5 East/West

Town/City/Village Little Rice

County Oneida

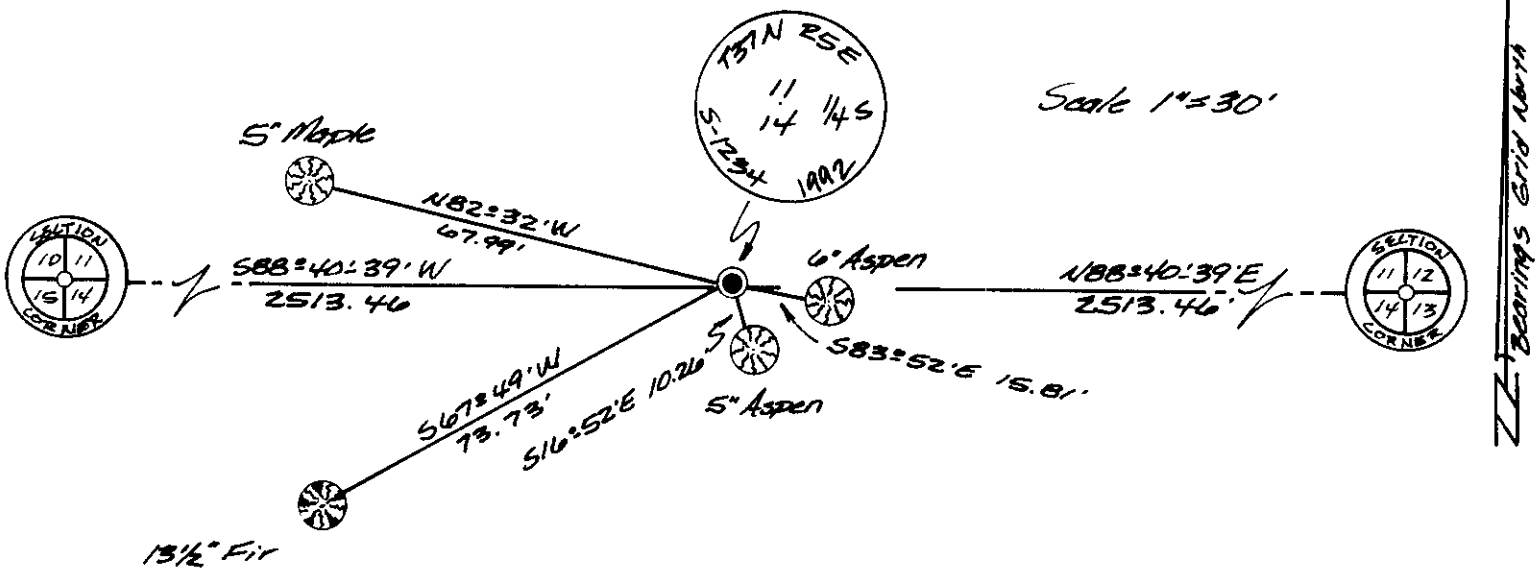


(b) (f) (g) (h) Description of monument found at this corner and if it was accepted, state all evidence (material, testimonial, occupational, plats, records, other monuments) used as a basis for accepting. If not accepted or if nothing was found, state evidence used as basis for establishing location. If reestablished through lost corner proportionate methods, indicate all monuments, distances and directions used to establish. Indicate type of monument found or set and sign post.

June 15th, 1863 - Joseph H. Jenkins, Deputy Surveyor, set $\frac{1}{4}$ Post witnessed by two bearing trees: an 6" Spruce bearing N72°E, 27 links and a 5" Spruce bearing S11°W, 41 links.

May 14th, 1992 - James D. Rein, RLS No. 1234, searched, but unable to find any evidence of 1/4 corner or the meander corners on the Tomahawk River West along the section line. Set a capped 2" dia. X 30" long aluminum monument by single proportionate measurement. Made reference ties as shown in plan view. Set plastic post 3/4 foot N.W. of monument.

(c) (d) (e) Plan view of corner with ties to at least 4 witness monuments. If in disagreement with previously established corner, show the distances between the two corners and also indicate the ties to the disputed corner.



(i) I, James D. Rein, RLS No. 1234
 (type or print name) certify that the corner location on this record was determined by me or under my direction and control and that this U.S. Public Land Survey Monument Record is correct and complete to the best of my knowledge and belief.

James D. Rein June 18th, 1992
 Signature Date



3705110020
 Stamp

Index No. J-19

JUN 12 2023

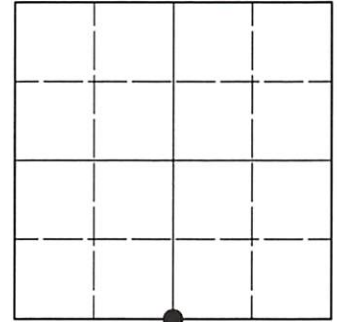
KYLE J. FRANSON
REGISTER OF DEEDS

U.S. PUBLIC LAND SURVEY MONUMENT RECORD

Note: This form is intended and designed to fulfill all requirements of Wisconsin Administrative Code, Chapter A-E 7.08 U.S. Public Land Survey Monument Record (3)(a-i).

(a) CORNER LOCATION
1/4 Cor. of Secs. 11 & 14
Township 37 North
Range 5 East of the 4th P.M.
Town of Little Rice
County of Oneida

WISCRS - Oneida County
N: 188,648.50 USft
E: 157,904.36 USft
Datum: NAD 83(2011) ep. 2010.00
GNSS Method: RTN - Direct
GNSS Control: WISCORS VRS



Sec. 11, T. 37 N., R. 5 E.

(b)(f)(g)(h) Description of monument found at this corner and if it was accepted, state all evidence (material, testimonial, occupational, plats, records, other monuments) used as a basis for accepting. If not accepted or if nothing was found, state evidence used as basis for establishing location. If re-established through lost corner proportionate methods, indicate all monuments, distances and directions used to establish. Indicate type of monument and sign post found or set.

This record is a perpetuation of the following land corner document(s):

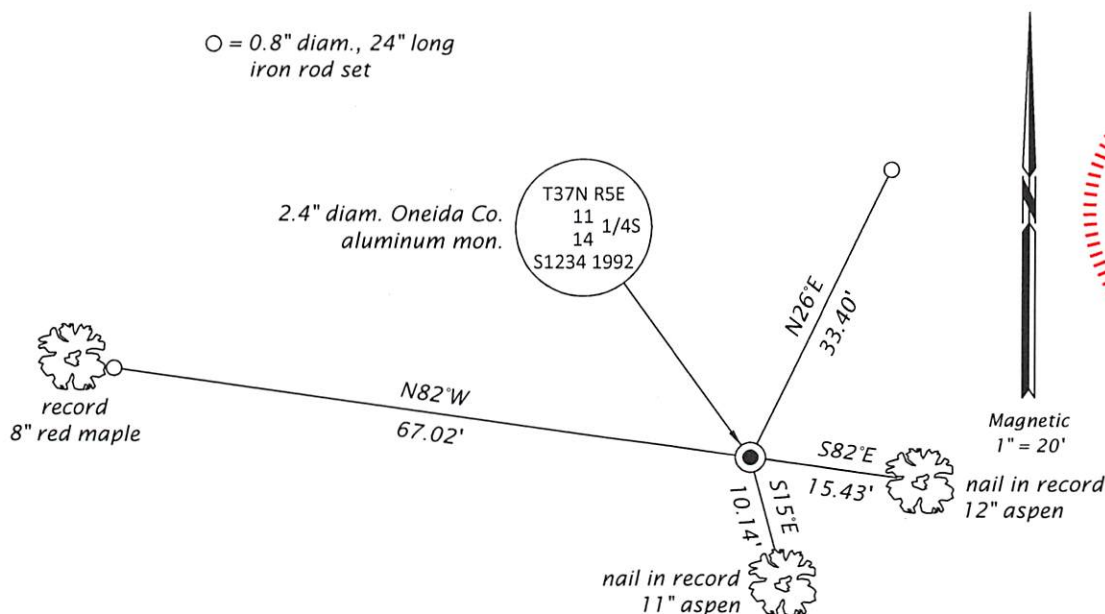
June 18, 1992: USPLS Monument Record by James D. Rein, filed in Oneida County

A complete history of the corner can be found on the previous land corner document(s). I accept the record activity as a true and faithful perpetuation or reestablishment of the original corner location and further perpetuate it as described below.

May 16, 2023: I found and accepted the record monument, a 2.4" diam. aluminum pipe, firmly set, with a 3.3" diam. Oneida Co. aluminum cap projecting 6" above the ground surface. The record fir bearing tree is down. I found or established accessories as indicated below. I found a white vinyl sign post bearing Northwest, 0.7 ft.

The coordinate value shown is the weighted mean of two or more GNSS observations at markedly different times satisfying the accuracy requirements defined and qualified in the 2022 Oneida County Fee Schedule for USPLS Corners.

(c)(d)(e) Plan view of corner with ties to at least 4 witness monuments. If in disagreement with previously established corner, show the distances between the two corners and also indicate the ties to the disputed.



(i) I, Jeffrey W. Austin, Professional Land Surveyor No. S-1885, hereby certify that the corner location on this record was determined by me or under my direction and control and that this U.S. Public Land Survey Monument Record is correct and complete to the best of my knowledge and belief.


Signature

JUNE 1, 2023
Date