

CERTIFIED LAND CORNER RESTORATION

State of Wisconsin }
County of Oneida } ss.

I, John H. Fisher, do hereby certify that on the 6th day of July, 1981, I found evidence of the northwest corner of Section 4 Township 36N Range 5E, Fourth Principal Meridian, as described hereon; and that from this evidence I established a new monument and accessories as described hereon to perpetuate the original location of this corner:

Description of original monument and accessories and subsequent restorations:

The original Gov't. survey was performed by Alfred Millard, Deputy Surveyor in Oct., 1860

- 8" Tamarack N80°E, 23 links
- 8" Tamarack S12°E, 9 links
- 5" Tamarack S50°W, 92 links
- 5" Tamarack N70°W, 27 links

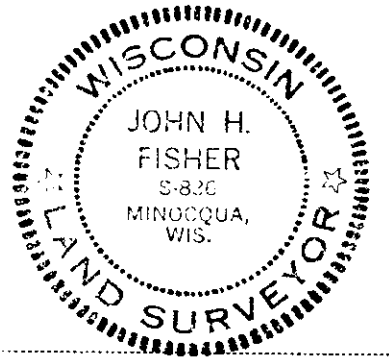
Description of corner evidence found:

W.C.D. 2" iron pipe with brass cap. (1940)

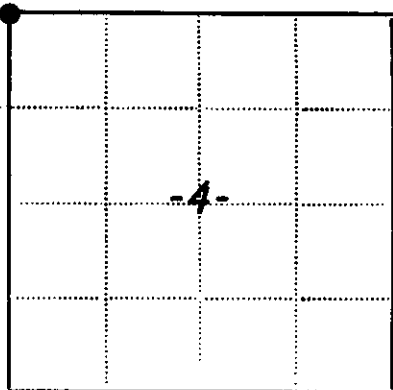
Description of monument and accessories I established to perpetuate the location of this corner:

Set:

- Tamarack Post
- 8" Tamarack N30°E, 57.6 feet
- 6" Tamarack N25°W, 73.0 feet
- 4" Tamarack, S70°W, 31.2 feet



*Corner data checked with records & accepted as correct
John H. Fisher, Oneida Surveyor*



● - Corner monument restored
□ -

Resident witnesses.....

Dated at Minocqua Wisconsin, this 31 day of July 1981.

Signature John H. Fisher Title Registered Land Surveyor
(County Surveyor, Registered Land Surveyor, or other duly authorized official)

Surveyors Registration No. S-836

Office of Register of Deeds County of Oneida

I hereby certify that the within instrument was filed in this office for record on the 25th day of August 1982, and was filed in Book No. Page No. of County Records.

Signature Doris Verage Kuehn Title Register of Deeds

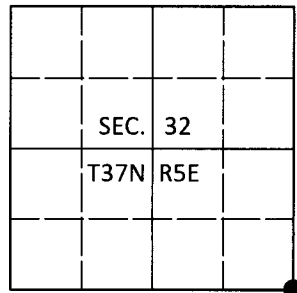
Township....., Range....., Section....., Index No....., Page No.....

U.S. PUBLIC LAND SURVEY MONUMENT RECORD

Note: This form is intended and designed to fulfill all requirements of Wisconsin Administrative Code, Chapter A-E 7.08 U.S. Public Land Survey Monument Record (3)(a-i).

(a) CORNER LOCATION
 Cor. of Secs. 4, 5, 32 & 33
 Township 36 & 37 North
 Range 5 East of the 4th P.M.
 Town of Little Rice
 County of Oneida

WISCRS - Oneida County
 N: 167,518.25 USft
 E: 144,432.21 USft
 Datum: NAD 83(2011)
 GNSS Method: RTN - Direct
 GNSS Control: WISCORS VRS



(b) HISTORY OF ORIGINAL CORNER ESTABLISHMENT

Original Surveyor:

Original Accessories:

Date of Survey Commenced:
 Completed:

See previous USPLS Monument Record

(b)(f)(g)(h) Description of monument found at this corner and if it was accepted, state all evidence (material, testimonial, occupational, plats, records, other monuments) used as a basis for accepting. If not accepted or if nothing was found, state evidence used as basis for establishing location. If re-established through lost corner proportionate methods, indicate all monuments, distances and directions used to establish. Indicate type of monument and sign post found or set.

This is a perpetuation of a previous USPLS Monument Record by John H. Fisher, RLS dated Jul. 31, 1981 and filed in the office of the Oneida County Register of Deeds. A complete history of the corner can be found on the previous monument record. I accept the previous location as a true and faithful perpetuation or reestablishment of the original corner location and further perpetuate it as follows.

Sep. 11, 2018: I found and accepted the record monument, a 2-1/2" diam. iron pipe with a 2-1/2" diam. WCD brass cap projecting 8" above the bog surface. I found or established accessories as shown below. I found a white vinyl sign post bearing Southeast, 0.7 ft.

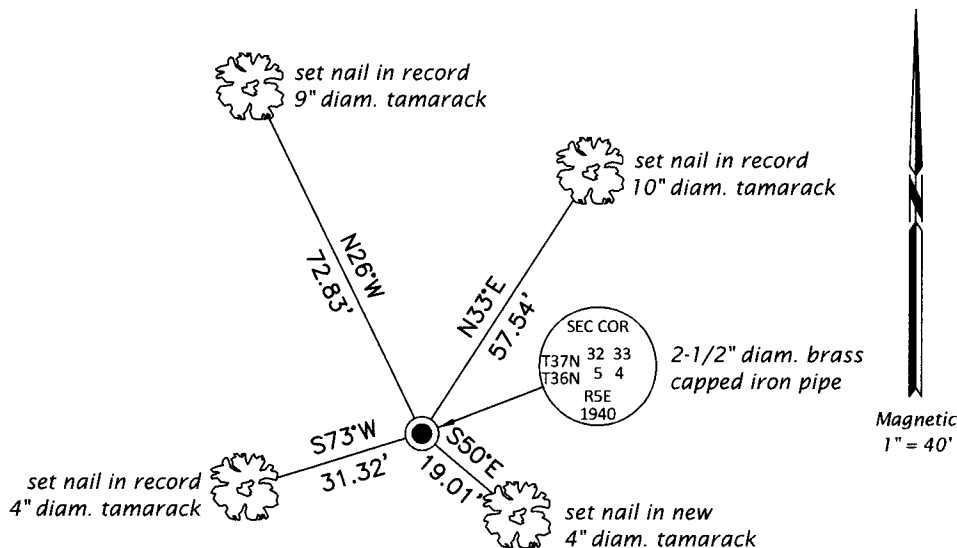
The coordinate value shown has been verified by at least one of the following methods: 1) comparison to a previously GPS determined published value; 2) the value is the average of two or more GPS observations at a markedly different time; 3) one or more distances were measured back to the GPS observed corner from temporary GPS observed offset locations.

REGISTER OF DEEDS OFFICE
 ONEIDA COUNTY
 FILED

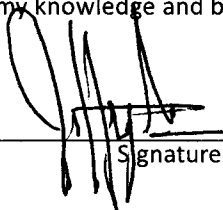
DEC 31 2018

KYLE J. FRANSON
 REGISTER OF DEEDS

(c)(d)(e) Plan view of corner with ties to at least 4 witness monuments. If in disagreement with previously established corner, show the distances between the two corners and also indicate the ties to the disputed.



(i) I, Jeffrey W. Austin, Professional Land Surveyor No. S-1885, hereby certify that the corner location on this record was determined by me or under my direction and control and that this U.S. Public Land Survey Monument Record is correct and complete to the best of my knowledge and belief.


 Signature

13 DEC 2018
 Date