

CERTIFIED LAND CORNER RESTORATION

State of Wisconsin }
County of Oneida } ss.

I, John H. Fisher, do hereby certify that on the 10th day of June, 1981, I found evidence of the north one quarter corner of Section 4 Township 36N, Range 56E, Fourth Principal Meridian, as described hereon; and that from this evidence I established a new monument and accessories as described hereon to perpetuate the original location of this corner:

Description of original monument and accessories and subsequent restorations:

The original Gov't. survey was performed by Alfred Millard, Deputy Surveyor in Oct. 1860.

Set wood post

3" Tamarack N47°E, 50 links
3" Tamarack S40°W, 104 links

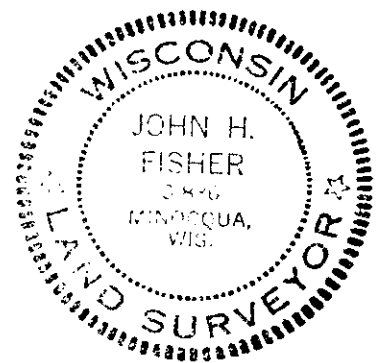
Description of corner evidence found:

W.C.D. 2" iron pipe with brass cap (1940)

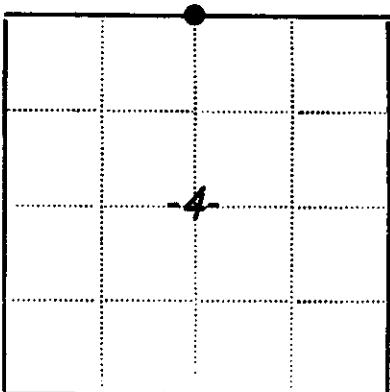
Description of monument and accessories I established to perpetuate the location of this corner:

Set:

Tamarack post
5" Tamarack S80°E, 24.8 feet
3" Tamarack N8°W, 85.3 feet
4" Tamarack, S32°E, 55.1 feet



Corner data checked with record & accepted as correct
G. H. & H. H. at Oneida Land Survey



● - Corner monument restored
□ -

Resident witnesses

Dated at Minocqua Wisconsin, this 31 day of July 1981.

Signature John H. Fisher Title Registered Land Surveyor
(County Surveyor, Registered Land Surveyor, or other duly authorized official)

Surveyors Registration No. S-836

Office of Registrar of Deeds County of Oneida

I hereby certify that the within instrument was filed in this office for record on the 25th day of August 1982, and was filed in Book No. Page No. of County Records.

Signature Doris Verage Kuehn Title Registrar of Deeds

Township, Range, Section, Index No., Page No.

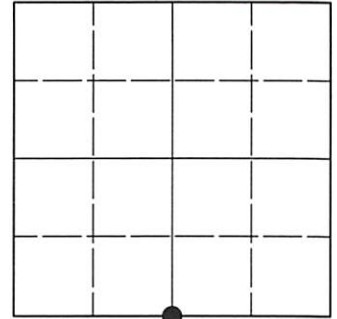
A-11

U.S. PUBLIC LAND SURVEY MONUMENT RECORD

Note: This form is intended and designed to fulfill all requirements of Wisconsin Administrative Code, Chapter A-E 7.08 U.S. Public Land Survey Monument Record (3)(a-i).

(a) CORNER LOCATION
 1/4 Cor. of Secs. 4 & 33
 Township 36 & 37 North
 Range 5 East of the 4th P.M.
 Town of Little Rice
 County of Oneida

WISCRS - Oneida County
 N: 167,505.74 USft
 E: 147,090.48 USft
 Datum: NAD 83(2011) ep. 2010.00
 GNSS Method: RTN - Direct
 GNSS Control: WISCRS VRS



Sec. 33, T. 37 N., R. 5 E.

(b)(f)(g)(h) Description of monument found at this corner and if it was accepted, state all evidence (material, testimonial, occupational, plats, records, other monuments) used as a basis for accepting. If not accepted or if nothing was found, state evidence used as basis for establishing location. If re-established through lost corner proportionate methods, indicate all monuments, distances and directions used to establish. Indicate type of monument and sign post found or set.

This record is a perpetuation of the following land corner document(s):

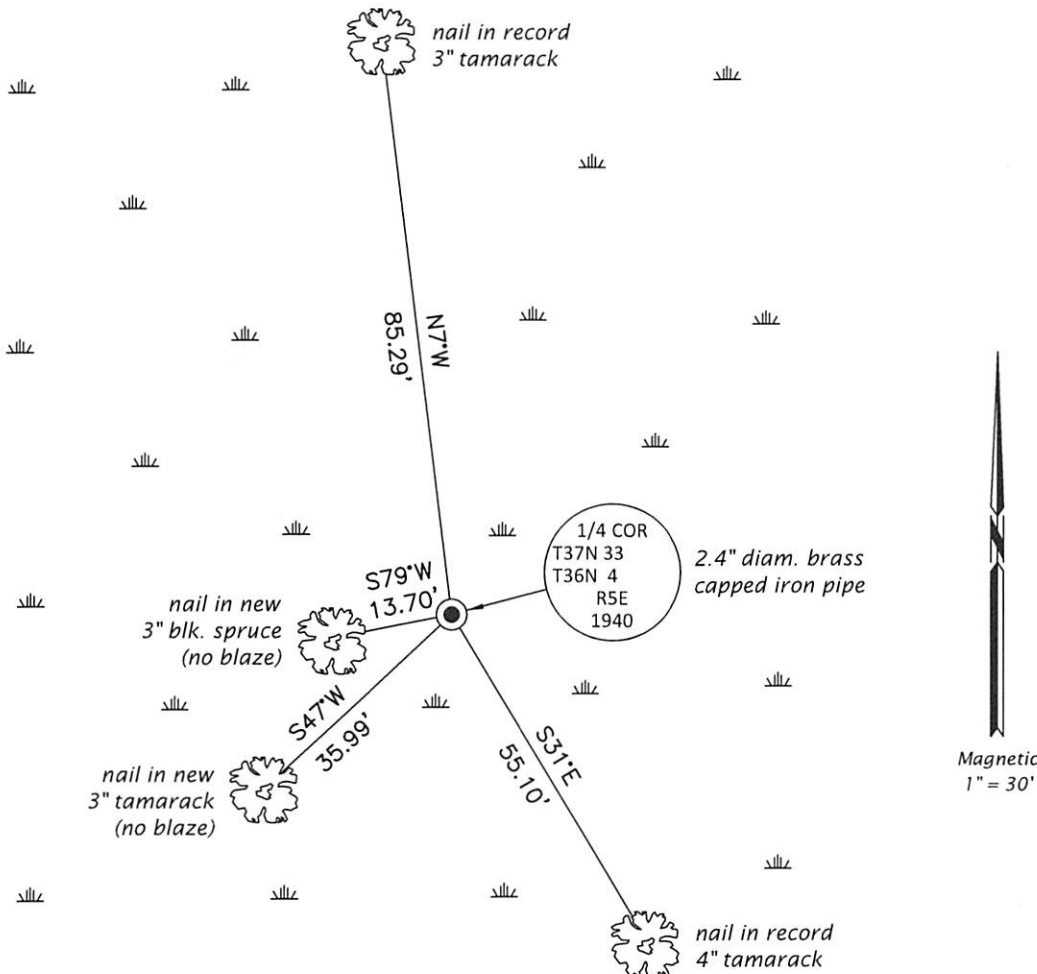
July 31, 1981: Certified Land Corner Restoration by John H. Fisher, filed in Oneida County

A complete history of the corner can be found on the previous land corner document(s). I accept the record activity as a true and faithful perpetuation or reestablishment of the original corner location and further perpetuate it as described below.

July 8, 2022: I found and accepted the record monument, a 2.4" diam. iron pipe, firmly set, with a 2.4" diam. WCD brass cap projecting 12" above the bog surface. The record bearing tree at S80°E is gone. I found or established accessories as indicated below. I set a white vinyl sign post bearing North, 0.7 ft.

The coordinate value shown is the weighted mean of two or more GNSS observations at markedly different times satisfying the accuracy requirements defined and qualified in the 2022 Oneida County Fee Schedule for USPLS Corners.

(c)(d)(e) Plan view of corner with ties to at least 4 witness monuments. If in disagreement with previously established corner, show the distances between the two corners and also indicate the ties to the disputed.

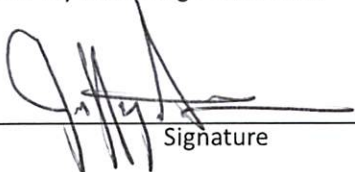


REGISTER OF DEEDS OFFICE
 ONEIDA COUNTY
 FILED

AUG 31 2022

KYLE J. FRANSON
 REGISTER OF DEEDS

(i) I, Jeffrey W. Austin, Professional Land Surveyor No. S-1885, hereby certify that the corner location on this record was determined by me or under my direction and control and that this U.S. Public Land Survey Monument Record is correct and complete to the best of my knowledge and belief.


 Signature

AUG. 1, 2022
 Date