

U.S. PUBLIC LAND SURVEY MONUMENT RECORD

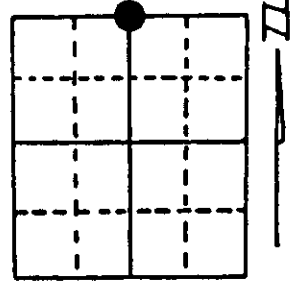
Note: This form is intended and designed to fulfill all requirements of Wisconsin Administrative Code, Chapter A-E 7.08 U.S. Public Land Survey Monument Record (3) (a) (b) (c) (d) (e) (f) (g) (h) (i). An additional sheet may be added if necessary to conform with said requirements.

(a) Corner location: Township 37 North

Range 6 East/West

Town/City/Village Cassian

County Oneida



Section 17

(b) (f) (g) (h) Description of monument found at this corner and if it was accepted, state all evidence (material, testimonial, occupational, plats, records, other monuments) used as a basis for accepting. If not accepted or if nothing was found, state evidence used as basis for establishing location. If reestablished through lost corner proportionate methods, indicate all monuments, distances and directions used to establish. Indicate type of monument found or set and sign post.

1863 - Joseph H. Jenkins established this corner and set a wood post with two BTs:
5" Jack Pine, N20°W, 17 Links (11.22') 6" Aspen, S22°W, 27 Links (17.82')

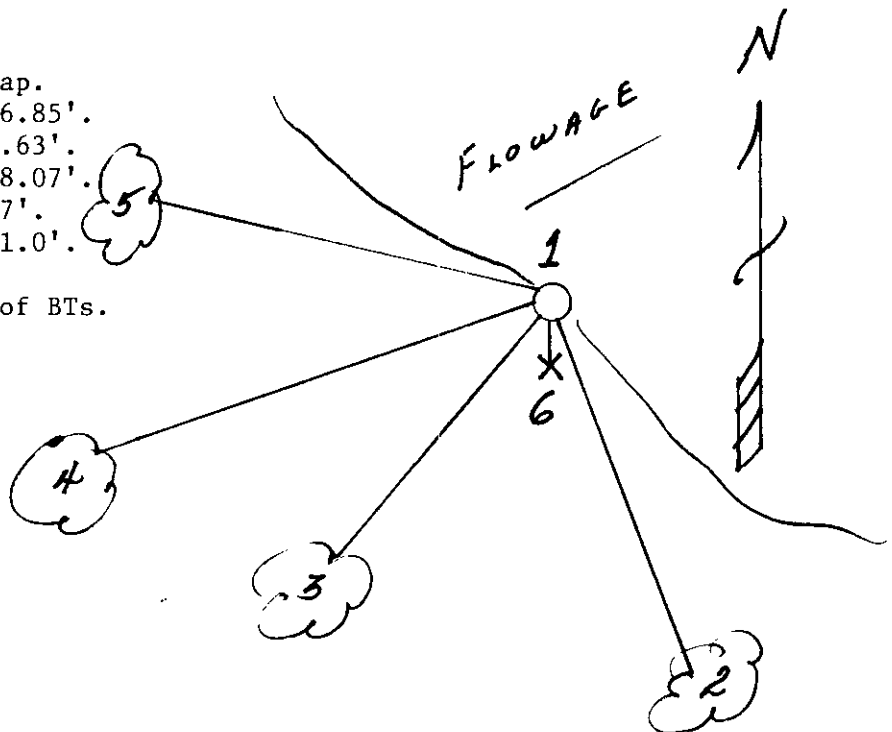
11/17/1936 - Vern Maine restored corner from what he felt was Dorr's BT - 8" Tamarack, N64°E, 17 Links (11.22'). He set a Pitch Pine Post with two BTs:
5" Tamarack, N68°E, 67 Links (44.22')
2 1/2" Jack Pine, S16°W, 44 Links (29.04')

11/16/1994 - Milo E. Stefan found Maine's monument at edge of beaver flowage. We made four new BTs and set plastic sign post.

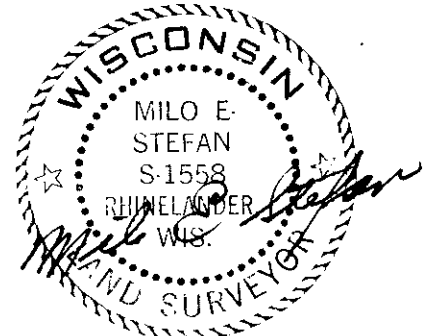
(c) (d) (e) Plan view of corner with ties to at least 4 witness monuments. If in disagreement with previously established corner, show the distances between the two corners and also indicate the ties to the disputed corner.

- 1) 2" x 60" Iron Pipe/Brass Cap.
- 2) 8" Black Spruce, S16°E, 116.85'.
- 3) 2" Black Spruce, S30°W, 43.63'.
- 4) 10" White Spruce, S76°W, 98.07'.
- 5) 8" Jack Pine, N84°W, 115.47'.
- 6) Plastic Sign Post, South, 1.0'.

Distances to nail in side of BTs.
Stump blazes scribed "BT".



(i) I, Milo E. Stefan
(type or print name) certify that the corner location on this record was determined by me or under my direction and control and that this U.S. Public Land Survey Monument Record is correct and complete to the best of my knowledge and belief.



Milo E. Stefan November 28, 1994
Signature Date

3706080020

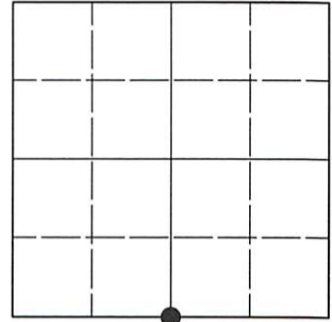
Index No. J-7

U.S. PUBLIC LAND SURVEY MONUMENT RECORD

Note: This form is intended and designed to fulfill all requirements of Wisconsin Administrative Code, Chapter A-E 7.08 U.S. Public Land Survey Monument Record (3)(a-i).

(a) CORNER LOCATION
 1/4 Cor. of Secs. 8 & 17
 Township 37 North
 Range 6 East of the 4th P.M.
 Town of Cassian
 County of Oneida

WISCRS - Oneida County
 N: 188,635.88 USft
 E: 173,327.91 USft
 Datum: NAD 83(2011) ep. 2010.00
 GNSS Method: RTN - Direct
 GNSS Control: WISCRS VRS



Sec. 8, T. 37 N., R. 6 E.

(b)(f)(g)(h) Description of monument found at this corner and if it was accepted, state all evidence (material, testimonial, occupational, plats, records, other monuments) used as a basis for accepting. If not accepted or if nothing was found, state evidence used as basis for establishing location. If re-established through lost corner proportionate methods, indicate all monuments, distances and directions used to establish. Indicate type of monument and sign post found or set.

This record is a perpetuation of the following land corner document(s):

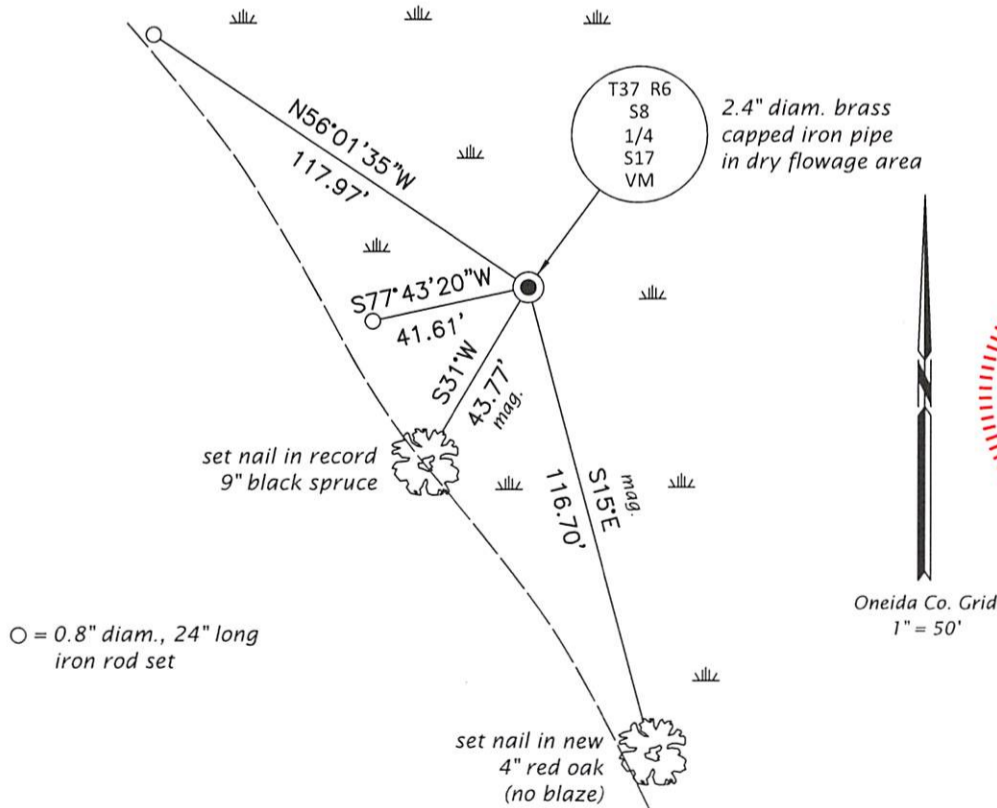
November 28, 1994: USPLS Monument Record by Milo E. Stefan, filed in Oneida County

A complete history of the corner can be found on the previous land corner document(s). I accept the record activity as a true and faithful perpetuation or reestablishment of the original corner location and further perpetuate it as described below.

August 6, 2022: I found and accepted the record monument, a 2.4" diam. iron pipe, loosely set, with a 2.4" diam. brass cap projecting 30" above the ground surface. The record bearing tree at: N84°W is standing dead; S16°E is down; S76°W is gone. I found or established accessories as indicated below. I found a white vinyl sign post bearing South, 0.9 ft.

The coordinate value shown is the weighted mean of two or more GNSS observations at markedly different times satisfying the accuracy requirements defined and qualified in the 2022 Oneida County Fee Schedule for USPLS Corners.

(c)(d)(e) Plan view of corner with ties to at least 4 witness monuments. If in disagreement with previously established corner, show the distances between the two corners and also indicate the ties to the disputed.



REGISTER OF DEEDS OFFICE
 ONEIDA COUNTY
 FILED

NOV 14 2022

KYLE J. FRANSON
 REGISTER OF DEEDS

(i) I, Jeffrey W. Austin, Professional Land Surveyor No. S-1885, hereby certify that the corner location on this record was determined by me or under my direction and control and that this U.S. Public Land Survey Monument Record is correct and complete to the best of my knowledge and belief.

[Handwritten Signature]

 Signature Date

SEP. 17, 2022