

CERTIFIED LAND CORNER RESTORATION

State of Wisconsin }
County of Oneida } ss.

I, JEROME N. KRAEMER, do hereby certify that on the 20th day of October, 1981, I found evidence of the one-quarter corner of Sections 9 and 10 Township 37 North, Range 6 East, Fourth Principal Meridian, as described hereon; and that from this evidence I established a new monument and accessories as described hereon to perpetuate the original location of this corner:

Description of original monument and accessories and subsequent restorations:

Original corner, a wood post, established in 1863 by J. H. Jenkins, Government Deputy Surveyor.

Spruce 6 N75°E 16
Tamarack 8 West 6

From county record book, V. M. Maine, County Surveyor "Oct. 26, 1936 Orig. Gov't 1/4 stk. between Secs. 9 and 10 identified by stub of orig. spruce, marks plain VIZ; Spr. 6 N75E .16; Stp of orig. Tam 8 West .06; Set official corner and marked B.T.s VIZ; Spr. 5 N11W .09; Spr. 3-1/2 S70°E .19-1/4"

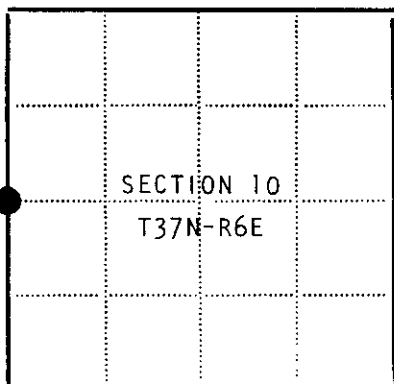
Description of corner evidence found:

General area now flooded by Rocky Run Flowage. Found V. M. Maine's corner, tipped over, in approximately two feet of water in open swamp (Rocky Run Flowage) with use of metal locator. The corner is a 2" diameter iron pipe with a round tablet stamped to identify corner. From iron pipe I locate BT stp. N11°W, 5.9 feet (Maine's). A second BT stp bears S70°E, 12.7 feet from iron pipe.

Description of monument and accessories I established to perpetuate the original location of this corner:

I adjusted Maine's 2" diameter and approximately 4 foot long iron pipe, with stamped tablet, to a vertical position which agrees with existing BT stumps. Corner now somewhat firm and extends 2" above water level this day. Winter ice will most probably disturb pipe. I established the following new bearing trees on nearby island. I blazed, scribed and drove PK nail in lower blaze of all bearing trees. Distance measured is to PK nail.

- Oak 13" S80°-02'W, 140.58 feet.
- N.Pine 19" N87°-14'W, 138.81 feet.
- W. Pine 8" S75°-51'W, 172.22 feet.
- Set new 3" square pine post one foot east of pipe.



● = Corner monument restored
□ =

Resident witnesses.....

Dated at Minocqua Wisconsin, this 12 day of March 1982....

Signature *Jerome N. Kraemer* Title Reg. Land Surveyor
(County Surveyor, Registered Land Surveyor, or other duly authorized official)

Surveyors Registration No. S-1448

Office of *Register of Deeds* County of *Oneida*, I hereby certify that the within instrument was filed in this office for record on the 11 day of *June* 1982, and was filed in Book No. Page No. of County Records.

Signature *Doris V. ...* Title *Reg. of Deeds*
Cynthia A. ...

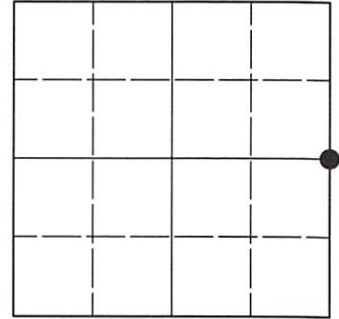
Township, Range, Section, Index No., Page No.

U.S. PUBLIC LAND SURVEY MONUMENT RECORD

Note: This form is intended and designed to fulfill all requirements of Wisconsin Administrative Code, Chapter A-E 7.08 U.S. Public Land Survey Monument Record (3)(a-i).

(a) CORNER LOCATION
 1/4 Cor. of Secs. 9 & 10
 Township 37 North
 Range 6 East of the 4th P.M.
 Town of Cassian
 County of Oneida

WISCRS - Oneida County
 N: 191,280.35 USft
 E: 181,464.51 USft
 Datum: NAD 83(2011) ep. 2010.00
 GNSS Method: RTN - Direct
 GNSS Control: WISCRS VRS



Sec. 9, T. 37 N., R. 6 E.

(b)(f)(g)(h) Description of monument found at this corner and if it was accepted, state all evidence (material, testimonial, occupational, plats, records, other monuments) used as a basis for accepting. If not accepted or if nothing was found, state evidence used as basis for establishing location. If re-established through lost corner proportionate methods, indicate all monuments, distances and directions used to establish. Indicate type of monument and sign post found or set.

This record is a perpetuation of the following land corner document(s):

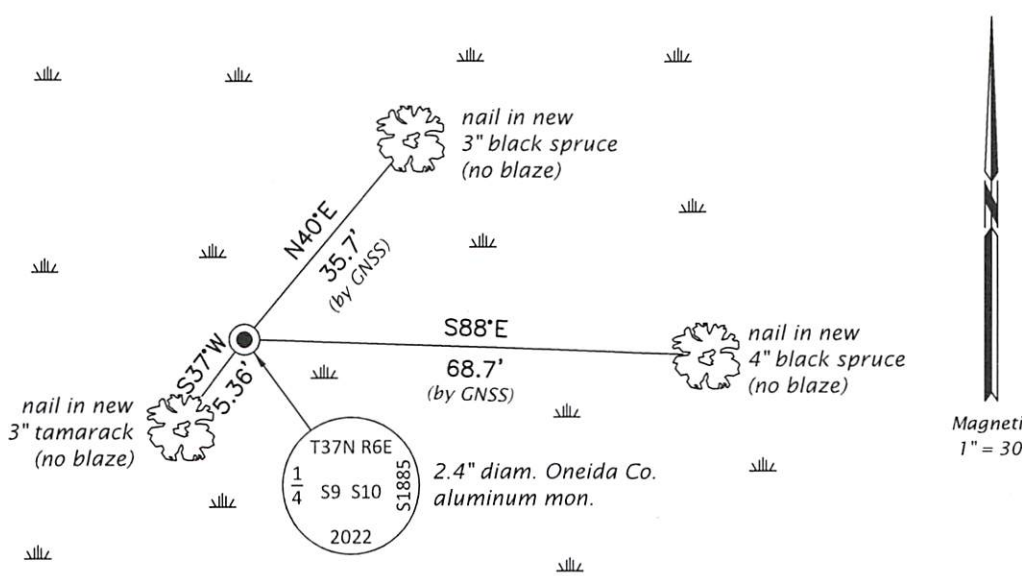
March 12, 1982: Certified Land Corner Restoration by Jerome N. Kraemer, filed in Oneida County

A complete history of the corner can be found on the previous land corner document(s). I accept the record activity as a true and faithful perpetuation or reestablishment of the original corner location and further perpetuate it as described below.

August 6, 2022: I found and accepted the record monument, a 2.4" diam. iron pipe with a 2.4" diam. brass cap 6" beneath the bog surface. The monument is badly rusted and in very poor condition. In its place, I set a 2.4" diam., 60" long aluminum pipe with a 3.3" diam. Oneida Co. aluminum cap projecting 4" above the bog surface. The record bearing trees are in place, but I was unable to remeasure them as I was working alone. I found or established accessories as indicated below. I set a white vinyl sign post bearing Northeast, 0.5 ft. As indicated below, two of the bearing trees were measured with GNSS as I encountered a ground bees nest and was stung numerous times working this corner.

The coordinate value shown is the weighted mean of two or more GNSS observations at markedly different times satisfying the accuracy requirements defined and qualified in the 2022 Oneida County Fee Schedule for USPLS Corners.

(c)(d)(e) Plan view of corner with ties to at least 4 witness monuments. If in disagreement with previously established corner, show the distances between the two corners and also indicate the ties to the disputed.




REGISTER OF DEEDS OFFICE
 ONEIDA COUNTY
 FILED

NOV 14 2022

KYLE J. FRANSON
 REGISTER OF DEEDS

(i) I, Jeffrey W. Austin, Professional Land Surveyor No. S-1885, hereby certify that the corner location on this record was determined by me or under my direction and control and that this U.S. Public Land Survey Monument Record is correct and complete to the best of my knowledge and belief.



 Signature

SEP. 17, 2022

 Date