

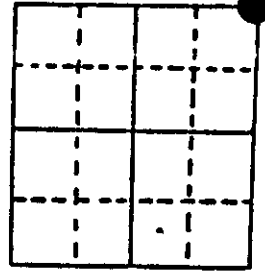
# U.S. PUBLIC LAND SURVEY MONUMENT RECORD

**Note:** This form is intended and designed to fulfill all requirements of Wisconsin Administrative Code, Chapter A-E 7.08 U.S. Public Land Survey Monument Record (3) (a) (b) (c) (d) (e) (f) (g) (h) (i). An additional sheet may be added if necessary to conform with said requirements.

(a) Corner location: Township 37 North  
 Range 6 East/West

Town/City/Village Cassian

County Oneida



Section 15

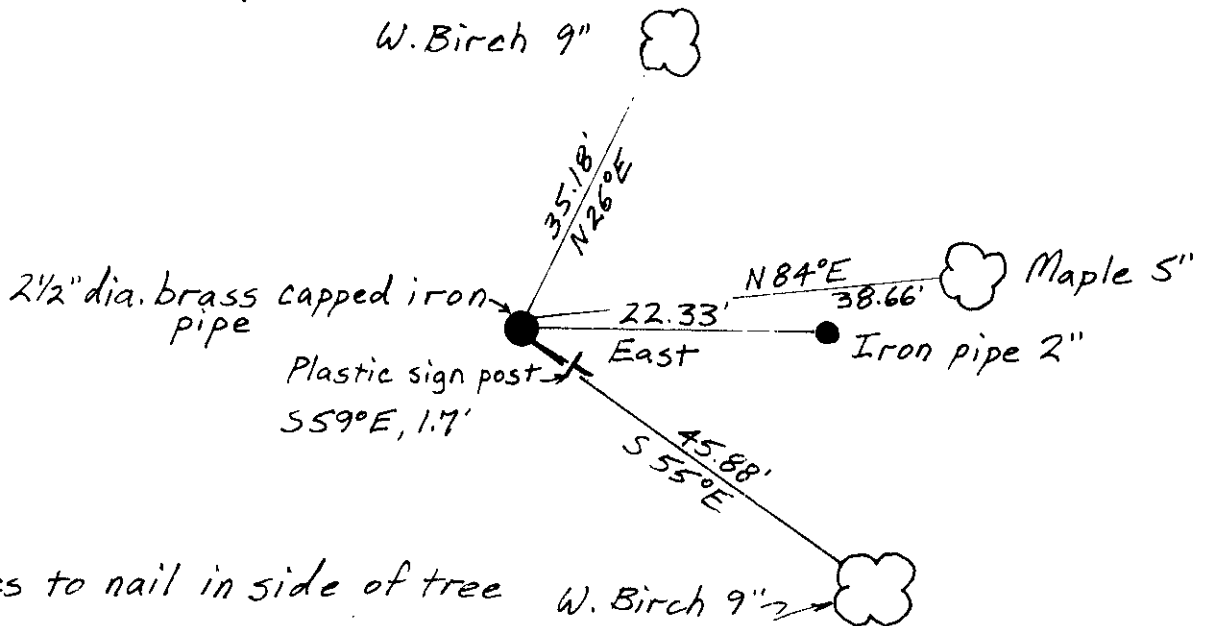
(b) (f) (g) (h) Description of monument found at this corner and if it was accepted, state all evidence (material, testimonial, occupational, plats, records, other monuments) used as a basis for accepting. If not accepted or if nothing was found, state evidence used as basis for establishing location. If reestablished through lost corner proportionate methods, indicate all monuments, distances and directions used to establish. Indicate type of monument found or set and sign post.

June-July, 1863, Joseph Jenkins set a wood post: Aspen 8" N15W, 251ks., Aspen 10" N38E, 291ks.

June, 1971, Northwoods Surveyors "TIMBER HILLS" map no. C-256 shows corner as Oneida County brass capped iron pipe: Pine Stp. 9" N64E, 21.8', N.Pine 18" S80W, 22.9'.

5-17-89, I found and accepted a 2½" dia. brass capped iron pipe: found iron pipe 2" East, 22.33', set spike in W.Birch 9" N26E, 35.18', set spike in W.Birch 9" S55E, 45.88', set spike in Maple 5" N84E, 38.66', set plastic survey marker sign S59E, 1.7'.

(c) (d) (e) Plan view of corner with ties to at least 4 witness monuments. If in disagreement with previously established corner, show the distances between the two corners and also indicate the ties to the disputed corner.



(i) I, JEFFREY W. AUSTIN S-1885  
 (type or print name) certify that the corner location on this record was determined by me or under my direction and control and that this U.S. Public Land Survey Monument Record is correct and complete to the best of my knowledge and belief.

Signature [Handwritten Signature] Date JUNE 30, 1989



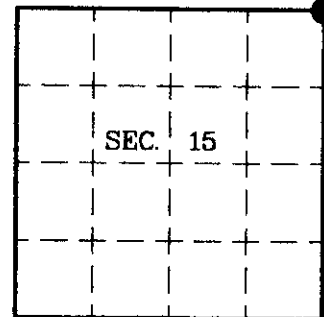
Index No. 2-17

3706100000

# U.S. PUBLIC LAND SURVEY MONUMENT RECORD

Note: This form is intended and designed to fulfill all requirements of Wisconsin Administrative Code, Chapter A-E 7.08 U.S. Public Land Survey Monument Record (3)(a)(b)(c)(d)(e)(f)(g)(h)(i). An additional sheet may be added if necessary to conform with said requirements.

(a) CORNER LOCATION: State Plane Coordinates  
 Northeast Corner of Section 15 X  
 Township 37 North Y  
 Range 6 East Datum Base  
 Town of Cassian County of Oneida



(b) HISTORY OF ORIGINAL CORNER ESTABLISHMENT

Original Surveyor: Joseph Jenkins  
 Date of Survey: Commenced June 1863  
 Completed July 1863

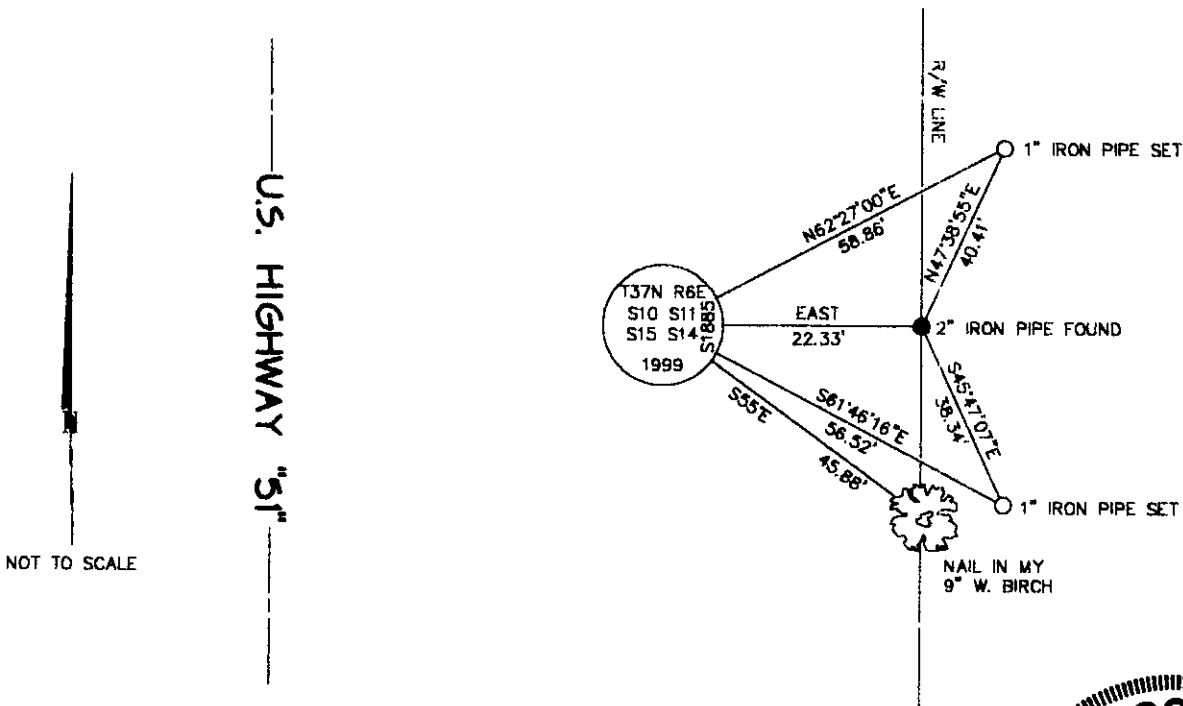
Original B.T.s  
 Aspen 8 N15°W 25 links  
 Aspen 10 N38°E 29 links

(b)(f)(g)(h) Description of monument found at this corner and if it was accepted, state all evidence (material, testimonial, occupational, plats, records, other monuments) used as a basis for accepting. If not accepted or if nothing was found, state evidence used as basis for establishing location. If reestablished through lost corner proportionate methods, indicate all monuments, distances and directions used to establish. Indicate type of monument and sign post found or set.

This corner was previously restored by Jeffrey W. Austin, Registered Land Surveyor #S-1885 on June 30, 1989. The complete history of this corner can be found on my U.S. Public Land Survey Monument Record.

August 30, 1999: I set a 2-1/2" dia., 30" long aluminum pipe with 3-1/4" dia. Oneida Co. aluminum cap marked as shown below. The brass-capped monument described in my previous monument record was tied out prior to highway construction as shown below. The new monument is in a rock cairn as it is somewhat loose due to rocky conditions. I established accessories as shown below and set a plastic sign post East, 2 feet.

(c)(d)(e) Plan view of corner with ties to at least 4 witness monuments. If in disagreement with previously established corner, show the distances between the two corners and also indicate the ties to the disputed.



(i) I, Jeffrey W. Austin, Registered Land Surveyor S-1885, hereby certify that the corner location on this record was determined by me or under my direction and control and that this U.S. Public Land Survey Monument Record is correct and complete to the best of my knowledge and belief.

Signature

Date

1-2-2000



INDEX NO. J-17

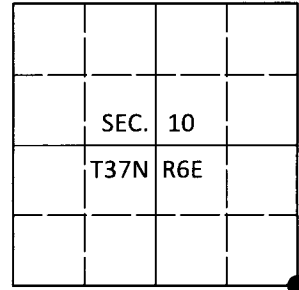
3706100000

**U.S. PUBLIC LAND SURVEY MONUMENT RECORD**

Note: This form is intended and designed to fulfill all requirements of Wisconsin Administrative Code, Chapter A-E 7.08 U.S. Public Land Survey Monument Record (3)(a-i).

(a) CORNER LOCATION  
 Cor. of Secs. 10, 11, 14 & 15  
 Township 37 North  
 Range 6 East of the 4th P.M.  
 Town of Cassian  
 County of Oneida

WISCRS - Oneida County  
 N: 188,770.04 USft  
 E: 186,517.37 USft  
 Datum: NAD 83(2011)  
 GNSS Method: RTN - Direct  
 GNSS Control: WISCORS VRS



(b) HISTORY OF ORIGINAL CORNER ESTABLISHMENT

Original Surveyor:

Original Accessories:

Date of Survey Commenced:  
 Completed:

See previous monument record(s)

(b)(f)(g)(h) Description of monument found at this corner and if it was accepted, state all evidence (material, testimonial, occupational, plats, records, other monuments) used as a basis for accepting. If not accepted or if nothing was found, state evidence used as basis for establishing location. If re-established through lost corner proportionate methods, indicate all monuments, distances and directions used to establish. Indicate type of monument and sign post found or set.

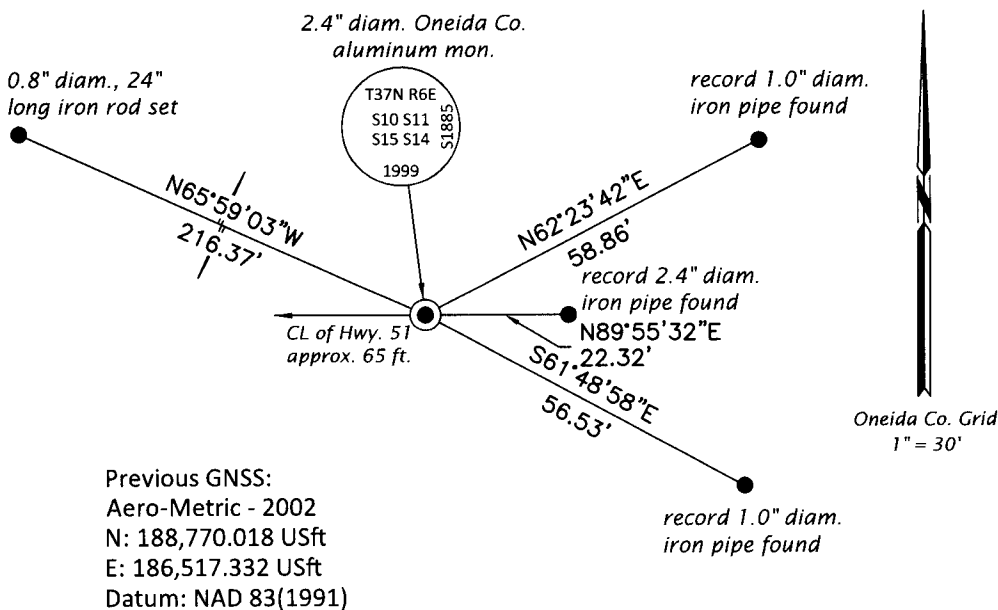
*This is a perpetuation of the following monument record(s) that comprise a complete history of the corner:*

*June 30, 1989: USPLS Monument Record No. 3706100000 by Jeffrey W. Austin, PLS  
 Jan. 20, 2000: USPLS Monument Record No. 3706100000 by Jeffrey W. Austin, PLS*

*Aug. 7, 2019: I found the record monument, a 2.4" diam. aluminum pipe with a 3.3" diam. Oneida Co. aluminum cap. The monument was tipped and very unstable, likely having been hit during mowing operations. I reset the monument flush in a collar of stone from the reference monuments as shown below. The 2000 bearing tree is standing dead. I found or established accessories as shown below. I found a white vinyl sign post bearing East, 1.7 ft.*

*The coordinate value shown has been verified by at least one of the following methods: 1) comparison to a previously GPS determined published value; 2) the value is the average of two or more GPS observations at a markedly different time; 3) one or more distances were measured back to the GPS observed corner from temporary GPS observed offset locations.*

(c)(d)(e) Plan view of corner with ties to at least 4 witness monuments. If in disagreement with previously established corner, show the distances between the two corners and also indicate the ties to the disputed.



REGISTER OF DEEDS OFFICE  
 ONEIDA COUNTY  
 FILED

JAN 03 2020

KYLE J. FRANSON  
 REGISTER OF DEEDS

(i) I, Jeffrey W. Austin, Professional Land Surveyor No. S-1885, hereby certify that the corner location on this record was determined by me or under my direction and control and that this U.S. Public Land Survey Monument Record is correct and complete to the best of my knowledge and belief.

*[Handwritten Signature]*  
 Signature

DEC. 23, 2019  
 Date

3706100000 (INDEX NO. J-17)