

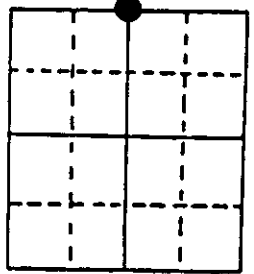
U.S. PUBLIC LAND SURVEY MONUMENT RECORD

Note: This form is intended and designed to fulfill all requirements of Wisconsin Administrative Code, Chapter A-E 7.08 U.S. Public Land Survey Monument Record (3) (a) (b) (c) (d) (e) (f) (g) (h) (i). An additional sheet may be added if necessary to conform with said requirements.

(a) Corner location: Township 37 North
 Range 6 East West

Town/City/Village Cassian

County Oneida

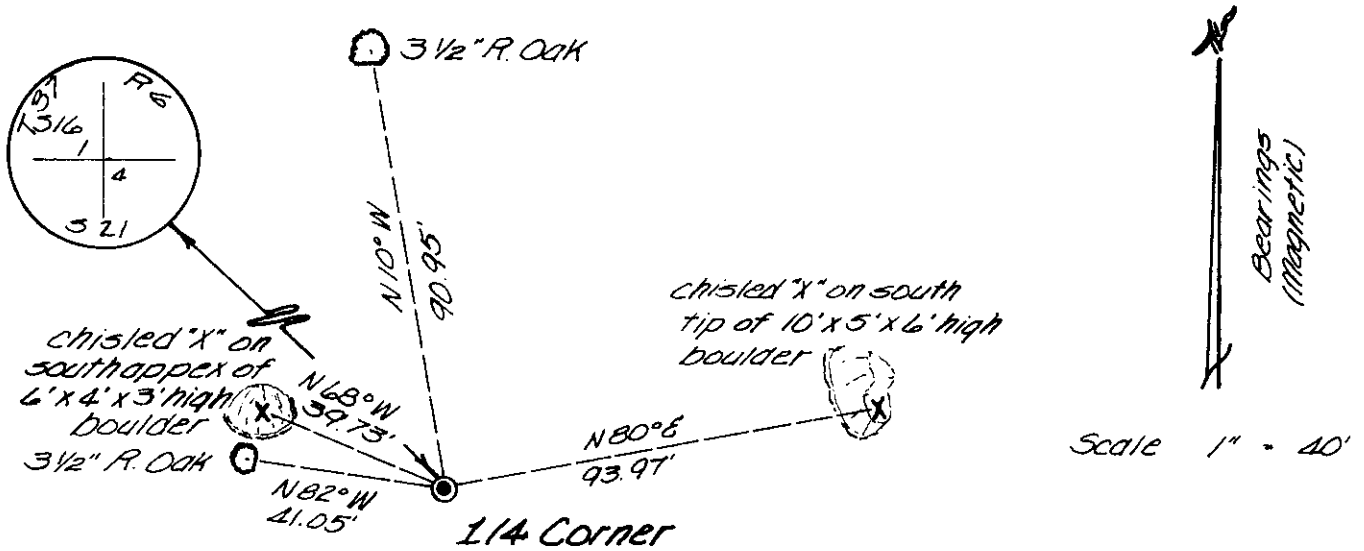


Section 21

(b) (f) (g) (h) Description of monument found at this corner and if it was accepted, state all evidence (material, testimonial, occupational, plats, records, other monuments) used as a basis for accepting. If not accepted or if nothing was found, state evidence used as basis for establishing location. If reestablished through lost corner proportionate methods, indicate all monuments, distances and directions used to establish. Indicate type of monument found or set and sign post.

July 3rd, 1863 - Joseph H. Jenkins, Deputy Surveyor, set 1/4 Post witnessed by two bearing trees: an 8" W. Pine bearing S54°W, 16 links; and a 8" W. Pine bearing N28°E, 30 links.
 Oct. 27th, 1936 - V. M. Maine, County Surveyor, found hole of old stake witnessed by a downed 8" W. Pine bearing N28°E, .30 chains. Set official corner and made three reference ties: a 6" W. Pine stump, bearing S32°W, .42 1/2 chains; 10' dia. boulder bearing N75°E, 1.41 chains; 4' dia. boulder bearing N75°W, .58 1/2 chains.
 1960 - Owen's Illinois map identifies corner as found, referenced by a 5" Oak bearing N68°E, 40' and a 6" Oak bearing N85°W, 43.0'.
 March 24th, 1992 - James D. Rein, Reg. Land Surveyor, recovered a brass capped 2" dia. x 60" long iron pipe extracted from the ground referenced by an Oak stump N72°E, 39.9' and an Oak stump bearing N82°W, 43.0'. Set monument in existing hole at base of rotted 3" square cedar post. The monument now sits 36" above ground level with stones encircling it. Reference ties are as shown in plan view. Set a plastic post 1' NE of monument.

(c) (d) (e) Plan view of corner with ties to at least 4 witness monuments. If in disagreement with previously established corner, show the distances between the two corners and also indicate the ties to the disputed corner.



(i) I, James D. Rein, RLS No. 1234
 (type or print name) certify that the corner location on this record was determined by me or under my direction and control and that this U.S. Public Land Survey Monument Record is correct and complete to the best of my knowledge and belief.

Signature

James D. Rein

May 19th, 1992

Date



Index No. N-111

Stamp
 3706160020

JUN 12 2023

KYLE J. FRANSON
REGISTER OF DEEDS

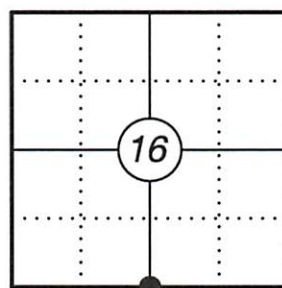
U.S. PUBLIC LAND SURVEY MONUMENT RECORD

This form is intended and designed to fulfill all requirements of Wisconsin Administrative Code, Chapter A-E 7.08 U.S. Public Land Survey Monument Record (3) (a)(b)(c)(d)(e)(f)(g)(h)(i). An additional sheet may be added if necessary to confirm with said requirements.

(a) Corner Location:

South 1/4 Corner Section 16
Township 37 North
Range 6 East
Town of Cassian
County of Oneida

Corner ID: 3706160020



(b) History of Original Corner:

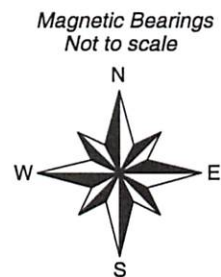
Original Surveyor: Joseph H. Jenkins Original B.T.'s: 8" White Pine - S 54° W, 16 Links
8" White Pine - N 28° E, 30 Links
Date of Survey: June 1863 - July 1863

(f)(g)(h) Description of monument found at this corner and if it was accepted, state all evidence (material, testimonial, occupational, plats, records, other monuments) used as a basis for establishing location. If reestablishing through lost corner proportionate methods, indicate all monuments, distances, and directions used to establish. Indicate type of monument and sign post found or set.

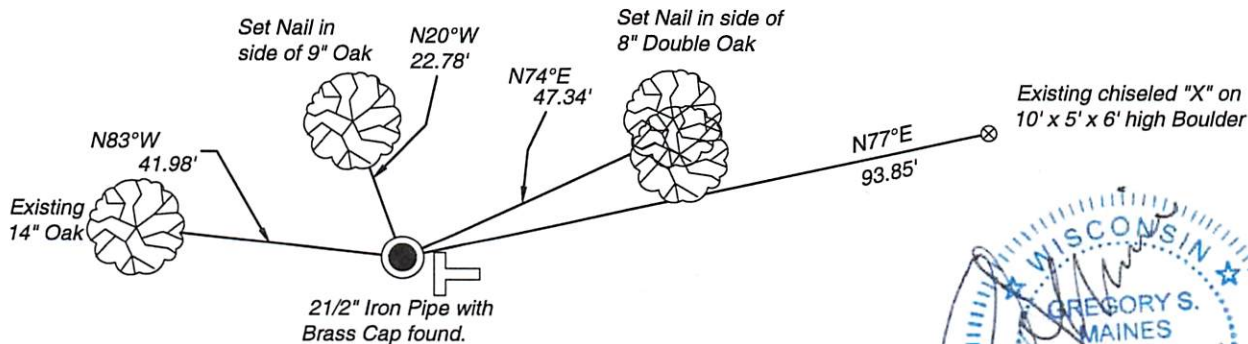
For corner history, see previous U.S. Public Land Survey Monument Record by James D. Rein, dated May 19, 1992.

06/09/2021 - I found and accepted a 2 1/2" Iron Pipe with Brass Cap at the corner location along with two existing bearing objects from previous tie sheet. I established two new bearing objects and measured to the two existing bearing objects as shown below.

(c)(d)(e) Plan view of corner with ties to at least four witnesses. If in disagreement with previously established corner, show the distances between the two corners and also indicate the tie to the disputed corner.



- * Vinyl "T" post 1.3' east of monument.
- * Distances to bearing trees are to nail in side.



Certification

I, Gregory S. Maines, Professional Land Surveyor No. 2729, hereby certify that the corner location on this record was referenced by me or under my direction and control and that this U.S. Public Land Survey Monument Record is complete to the best of my knowledge and belief. REF: 2020143

Index No.: N-11