

U.S. PUBLIC LAND SURVEY MONUMENT RECORD

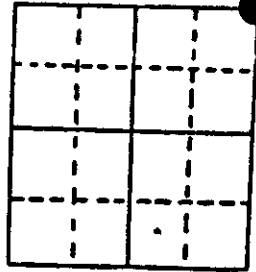
Note: This form is intended and designed to fulfill all requirements of Wisconsin Administrative Code, Chapter A-E 7.08 U.S. Public Land Survey Monument Record (3) (a) (b) (c) (d) (e) (f) (g) (h) (i). An additional sheet may be added if necessary to conform with said requirements.

(a) Corner location: Township 37 North

Range 6 East/West

Town/City/Village Cassian

County Oneida



Section 20

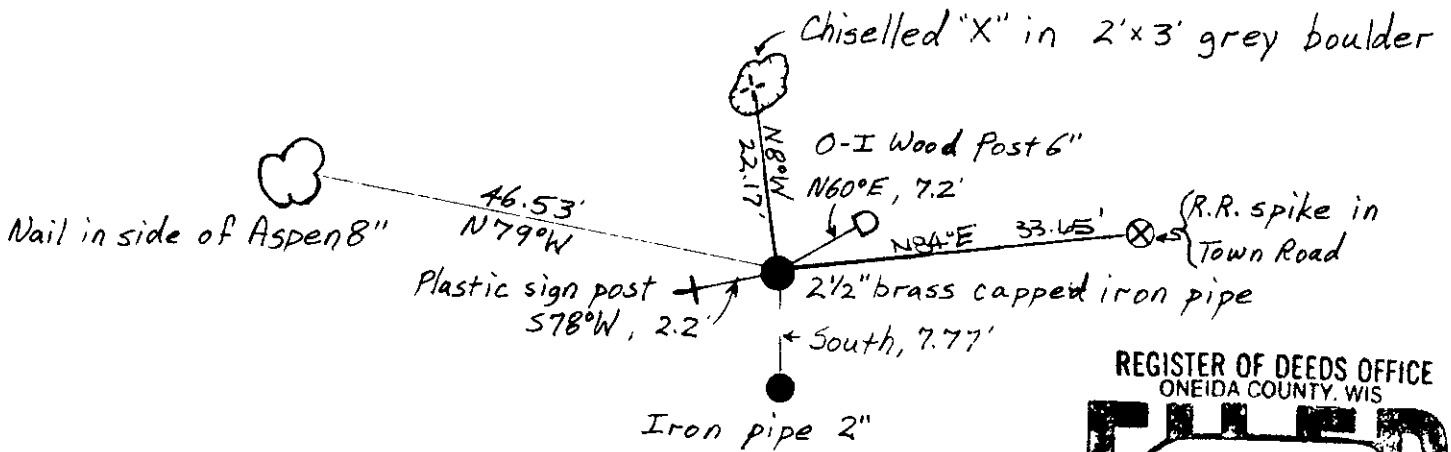
(b) (f) (g) (h) Description of monument found at this corner and if it was accepted, state all evidence (material, testimonial, occupational, plats, records, other monuments) used as a basis for accepting. If not accepted or if nothing was found, state evidence used as basis for establishing location. If reestablished through lost corner proportionate methods, indicate all monuments, distances and directions used to establish. Indicate type of monument found or set and sign post.

June-July, 1863, Joseph Jenkins set a wood post: W.Pine 10" N5W, 251ks., W.Pine 7" N32E, 131ks.

7-10-73, Northwoods Surveyors Plat of Rocky Run Heights : corner shown as brass capped 2" iron pipe.

5-17-89, I found and accepted a 2 1/2" dia. brass capped iron pipe: found 0-1 wood post 6" N60E, 7.2', found iron pipe 2" South, 7.77', set nail in Aspen 8" N79W, 46.53', set chiseled "X" in 2'x3' grey boulder N84E, 33.45', set railroad spike in pavement of town road N84E, 33.65', set plastic survey marker sign S78W, 2.2'.

(c) (d) (e) Plan view of corner with ties to at least 4 witness monuments. If in disagreement with previously established corner, show the distances between the two corners and also indicate the ties to the disputed corner.



JEFFREY W. AUSTIN

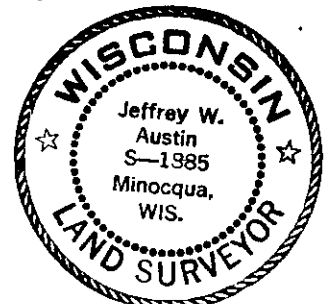
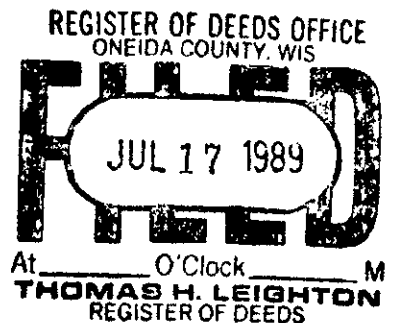
S-1885

(i) I, _____ (type or print name) certify that the corner location on this record was determined by me or under my direction and control and that this U.S. Public Land Survey Monument Record is correct and complete to the best of my knowledge and belief.

Signature

Date

JUNE 30, 1989



Index No. 7-9

3706170000

JUN 12 2023

KYLE J. FRANSON
REGISTER OF DEEDS

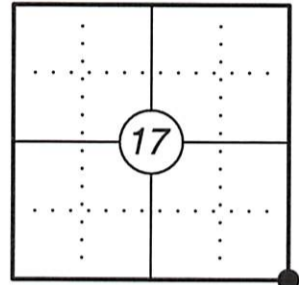
U.S. PUBLIC LAND SURVEY MONUMENT RECORD

This form is intended and designed to fulfill all requirements of Wisconsin Administrative Code, Chapter A-E 7.08 U.S. Public Land Survey Monument Record (3) (a)(b)(c)(d)(e)(f)(g)(h)(i). An additional sheet may be added if necessary to confirm with said requirements.

(a) Corner Location:

Southeast Corner Section 17
Township 37 North
Range 6 East
Town of Cassian
County of Oneida

Corner ID: 3706170000



(b) History of Original Corner:

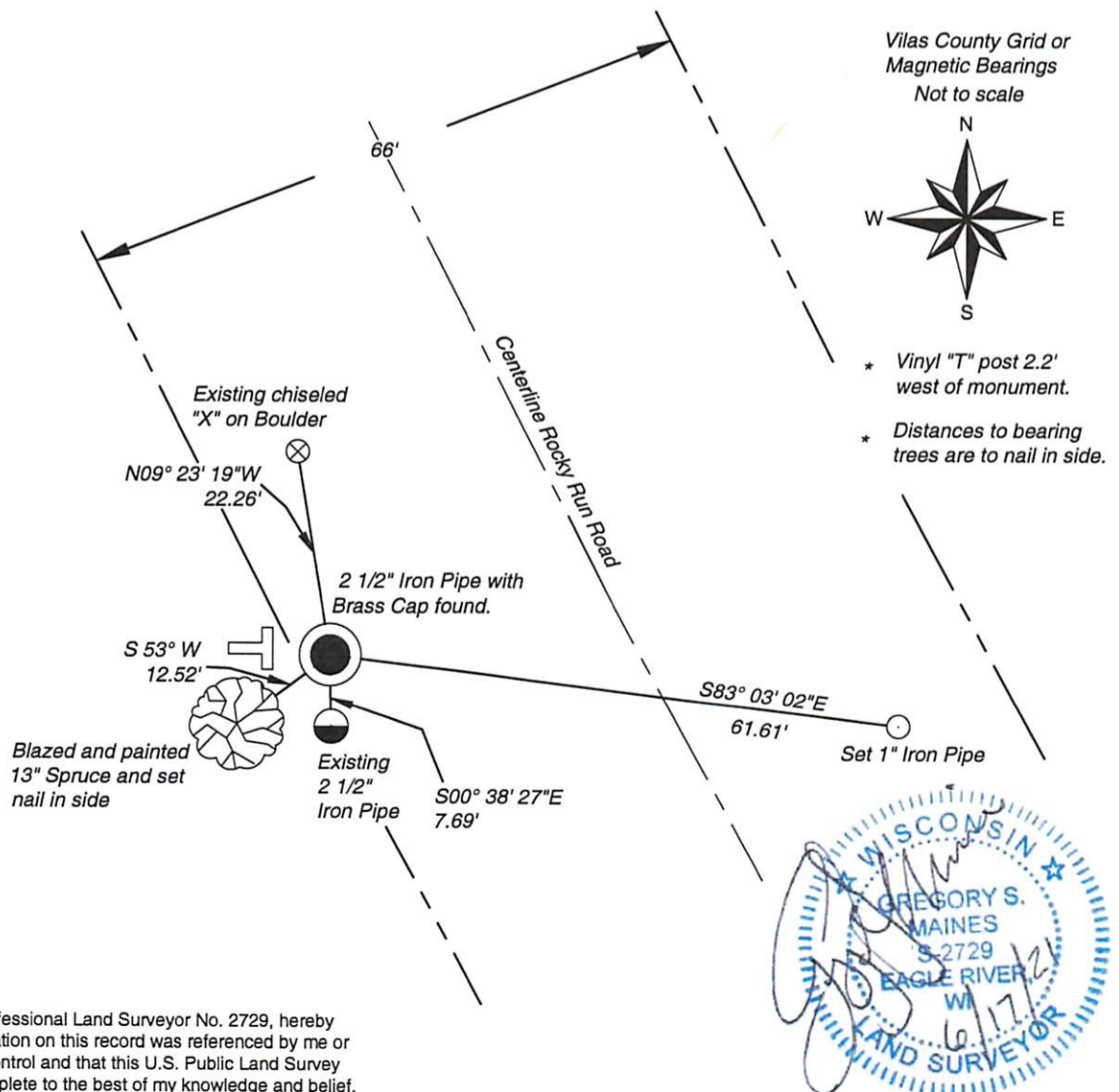
Original Surveyor: Joseph H. Jenkins Original B.T.'s: 10" White Pine - N 5° W, 25 Links
Date of Survey: June 1863 - July 1863 7" White Pine - N 32° E, 13 Links

(f)(g)(h) Description of monument found at this corner and if it was accepted, state all evidence (material, testimonial, occupational, plats, records, other monuments) used as a basis for establishing location. If reestablishing through lost corner proportionate methods, indicate all monuments, distances, and directions used to establish. Indicate type of monument and sign post found or set.

For corner history, see previous U.S. Public Land Survey Monument Record by Jeff Austin, dated June 30, 1989.

06/09/2021 - I found and accepted a 2.5" Iron Pipe with Brass Cap at the corner location as well as two existing bearing objects from previous tie sheet. I established two new bearing objects and measured to the two existing bearing objects as shown below.

(c)(d)(e) Plan view of corner with ties to at least four witnesses. If in disagreement with previously established corner, show the distances between the two corners and also indicate the tie to the disputed corner.



Certification

I, Gregory S. Maines, Professional Land Surveyor No. 2729, hereby certify that the corner location on this record was referenced by me or under my direction and control and that this U.S. Public Land Survey Monument Record is complete to the best of my knowledge and belief.
REF: 2020143

Index No.: 2-9