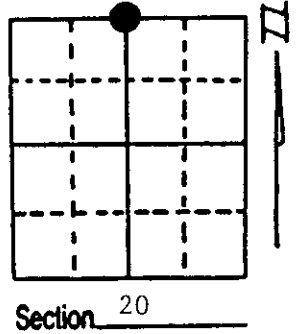


U.S. PUBLIC LAND SURVEY MONUMENT RECORD

Note: This form is intended and designed to fulfill all requirements of Wisconsin Administrative Code, Chapter A-E 7.08 U.S. Public Land Survey Monument Record (3) (a) (b) (c) (d) (e) (f) (g) (h) (i). An additional sheet may be added if necessary to conform with said requirements.

(a) Corner location: Township 37 North
 Range 6 East/West

Town/City/Village Cassian
 County Oneida



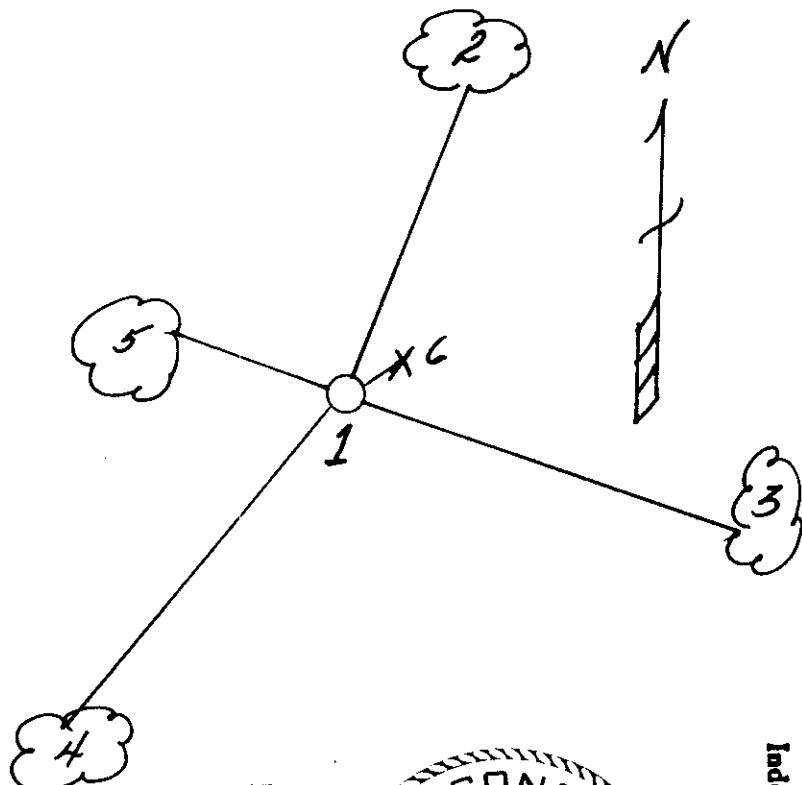
(b) (f) (g) (h) Description of monument found at this corner and if it was accepted, state all evidence (material, testimonial, occupational, plats, records, other monuments) used as a basis for accepting. If not accepted or if nothing was found, state evidence used as basis for establishing location. If reestablished through lost corner proportionate methods, indicate all monuments, distances and directions used to establish. Indicate type of monument found or set and sign post.

- 1863 - Joseph H. Jenkins established this corner and set a wood post:
 12" Aspen, N59°E, 8 Links (5.28') 8" Aspen, S28°W, 20 Links (13.2')
- 11/5/1936 - Vern Maine restored corner by lost methods and set a Tamarack stake with two BTs:
 8" White Pine Stump, N28°E, 27 Links (17.82')
 7" White Pine Stub, S57°W, 39 Links (25.74')
- 1937 - Vern Maine restored corner and set a 2" x 60" iron pipe/brass cap.
- 11/10/1994 - Milo E. Stefan found Maine's monument, made four new BTs and set a plastic sign post.
 (We were not aware of Maine's 11/5/1936 work on 11/10/1994 visit to corner.)

(c) (d) (e) Plan view of corner with ties to at least 4 witness monuments. If in disagreement with previously established corner, show the distances between the two corners and also indicate the ties to the disputed corner.

- 1) 2" x 60" Iron Pipe/Brass Cap.
- 2) 6" Red Maple, N25°E, 164.09'.
- 3) 10" White Pine, S74°E, 108.62'.
- 4) 12" Red Pine, S39°W, 155.72'.
- 5) 3" Aspen, N73°W, 20.10'.
- 6) Plastic Sign Post, NE, .8'.

Distances to nail in side of BT.
 Stump blaze scribed "BT".



(i) I, Milo E. Stefan
 (type or print name) certify that the corner location on this record was determined by me or under my direction and control and that this U.S. Public Land Survey Monument Record is correct and complete to the best of my knowledge and belief.

Milo E. Stefan November 20, 1994
 Signature Date



Index No. N-7

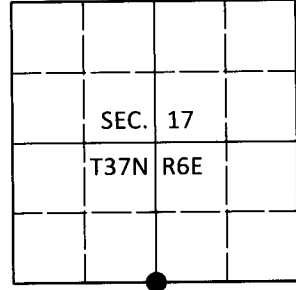
3706 170020

U.S. PUBLIC LAND SURVEY MONUMENT RECORD

Note: This form is intended and designed to fulfill all requirements of Wisconsin Administrative Code, Chapter A-E 7.08 U.S. Public Land Survey Monument Record (3)(a-i).

(a) CORNER LOCATION
 1/4 Cor. of Secs. 17 & 20
 Township 37 North
 Range 6 East of the 4th P.M.
 Town of Cassian
 County of Oneida

WISCRS - Oneida County
 N: 183,183.10 USft
 E: 173,286.60 USft
 Datum: NAD 83(2011)
 GNSS Method: Static - Direct
 GNSS Control: WISCORS VRS



(b) HISTORY OF ORIGINAL CORNER ESTABLISHMENT

Original Surveyor: _____ Original Accessories: _____
 Date of Survey _____ Commenced: _____ See previous monument record(s)
 Completed: _____

(b)(f)(g)(h) Description of monument found at this corner and if it was accepted, state all evidence (material, testimonial, occupational, plats, records, other monuments) used as a basis for accepting. If not accepted or if nothing was found, state evidence used as basis for establishing location. If re-established through lost corner proportionate methods, indicate all monuments, distances and directions used to establish. Indicate type of monument and sign post found or set.

This is a perpetuation of the following monument record(s) that comprise a complete history of the corner:

Nov. 20, 1994: USPLS Monument Record No. 3706170020 by Milo E. Stefan, PLS

May 21, 2020: I found and accepted the record monument, a 2.4" diam. iron pipe with a 2.4" diam. brass cap projecting 24" above the ground surface. The record aspen and red pine bearing trees are gone. I did not look for the record maple. I found or established accessories as shown below. I found a white vinyl sign post bearing North, 0.6 ft.

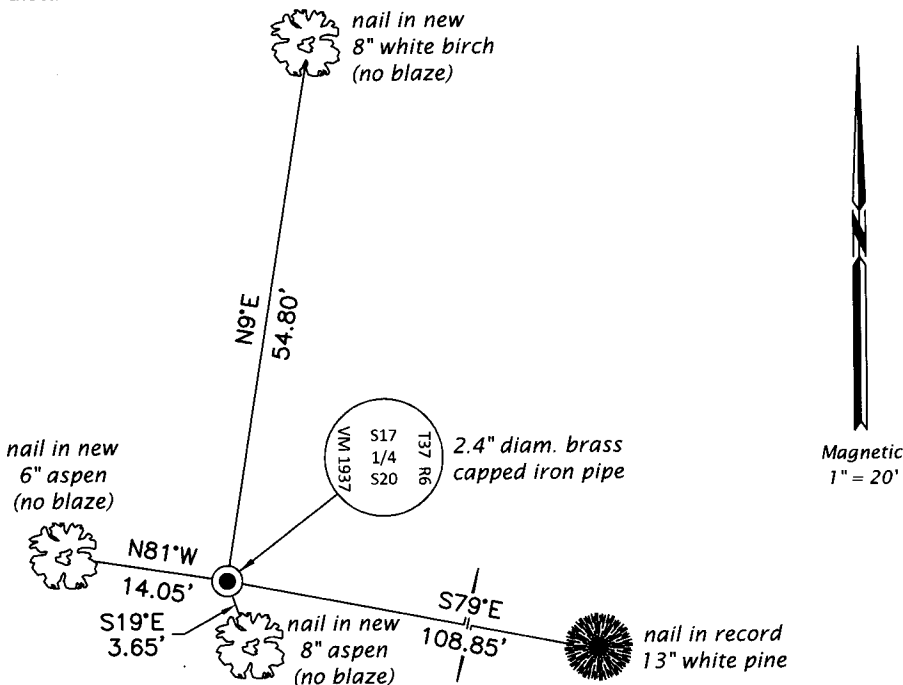
The coordinate value shown has been verified by at least one of the following methods: 1) comparison to a previously GPS determined published value; 2) the value is the average of two or more GPS observations at a markedly different time; 3) one or more distances were measured back to the GPS observed corner from temporary GPS observed offset locations.

REGISTER OF DEEDS OFFICE
 ONEIDA COUNTY
 FILED

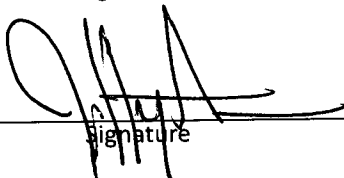
JUN 26 2020

KYLE J. FRANSON
 REGISTER OF DEEDS

(c)(d)(e) Plan view of corner with ties to at least 4 witness monuments. If in disagreement with previously established corner, show the distances between the two corners and also indicate the ties to the disputed.



(i) I, Jeffrey W. Austin, Professional Land Surveyor No. S-1885, hereby certify that the corner location on this record was determined by me or under my direction and control and that this U.S. Public Land Survey Monument Record is correct and complete to the best of my knowledge and belief.

 _____ Date JUNE 5, 2020