

U.S. PUBLIC LAND SURVEY MONUMENT RECORD

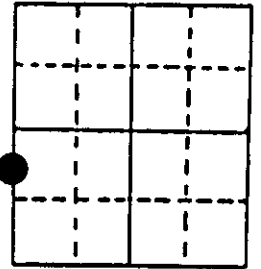
Note: This form is intended and designed to fulfill all requirements of Wisconsin Administrative Code, Chapter A-E 7.08 U.S. Public Land Survey Monument Record (3) (a) (b) (c) (d) (e) (f) (g) (h) (i). An additional sheet may be added if necessary to conform with said requirements.

(a) Corner location: Township 37 North

Range 6 East/West

Town/City/Village Cassian

County Oneida



Section 17

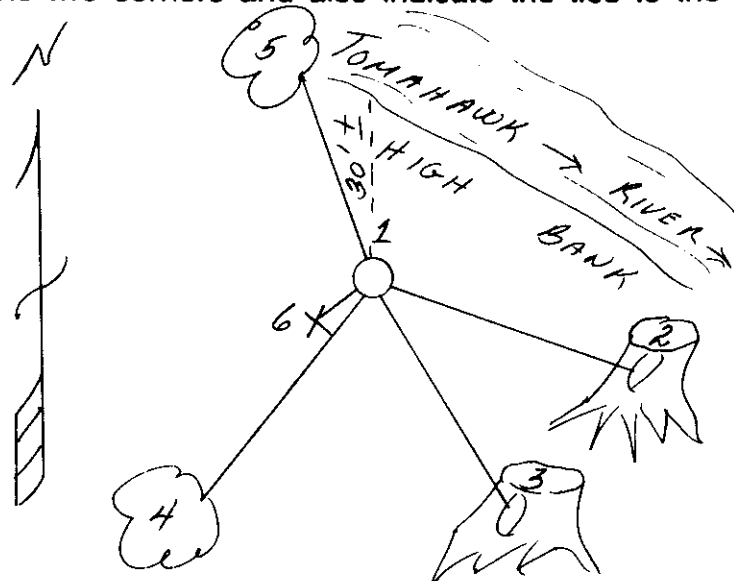
(b) (f) (g) (h) Description of monument found at this corner and if it was accepted, state all evidence (material, testimonial, occupational, plats, records, other monuments) used as a basis for accepting. If not accepted or if nothing was found, state evidence used as basis for establishing location. If reestablished through lost corner proportionate methods, indicate all monuments, distances and directions used to establish. Indicate type of monument found or set and sign post.

- 1863 - Joseph H. Jenkins established this corner at 24.5 chains North of the Section Corner and on South bank of River and set a wood post/one BT:
12" Maple, N12°W, 20 Links (13.20') - no others near.
- 10/15/1937 - V. Maine rescored corner by Lost Methods and at 25.75 chains North of Section Corner set a Cedar stake with 2 BTs:
28" White Pine, S70°E, 1.22 Chains (80.52')
28" White Pine, S40°E, 38.7 Links (25.54')
- 10/25/1995 - Milo E. Stefan found both of Maines BTs have been cut. Stumps are sound with stump blaze very plain. We placed an aluminum monument, made new BTs and placed a plastic sign post.

(c) (d) (e) Plan view of corner with ties to at least 4 witness monuments. If in disagreement with previously established corner, show the distances between the two corners and also indicate the ties to the disputed corner.

- 1) 2" x 30" Aluminum Monument
- 2) 28" White Pine Stump, S70°E, 80.52'.
- 3) 28" White Pine Stump, S40°E, 25.54'.
- 4) 4" White Pine, S36°W, 31.46'.
- 5) 2" White Birch, N27°W, 10.91'.
- 6) Plastic sign post, .9'.

Distances to nail in side of BTs.
Stump blaze scribed "BT".
BT tags on face of each BT.



(i) I, Milo E. Stefan
(type or print name) certify that the corner location on this record was determined by me or under my direction and control and that this U.S. Public Land Survey Monument Record is correct and complete to the best of my knowledge and belief.

Milo E. Stefan
Signature

December 17, 1995

Date



Stamp
3706181200

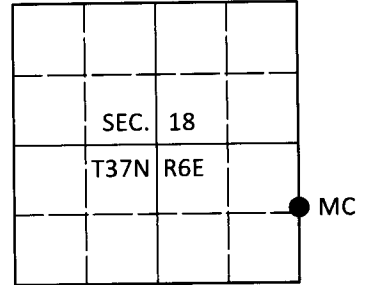
Index No. L, M-5

U.S. PUBLIC LAND SURVEY MONUMENT RECORD

Note: This form is intended and designed to fulfill all requirements of Wisconsin Administrative Code, Chapter A-E 7.08 U.S. Public Land Survey Monument Record (3)(a-i).

(a) CORNER LOCATION
 Meander Cor. of Secs. 17 & 18
 Township 37 North
 Range 6 East of the 4th P.M.
 Town of Cassian
 County of Oneida

WISCRS - Oneida County
 N: 184,917.66 USft
 E: 170,658.27 USft
 Datum: NAD 83(2011)
 GNSS Method: RTN - Direct
 GNSS Control: WISCORS VRS



(b) HISTORY OF ORIGINAL CORNER ESTABLISHMENT

Original Surveyor: _____ Original Accessories: _____
 Date of Survey Commenced: _____ See previous monument record(s)
 Completed: _____

(b)(f)(g)(h) Description of monument found at this corner and if it was accepted, state all evidence (material, testimonial, occupational, plats, records, other monuments) used as a basis for accepting. If not accepted or if nothing was found, state evidence used as basis for establishing location. If re-established through lost corner proportionate methods, indicate all monuments, distances and directions used to establish. Indicate type of monument and sign post found or set.

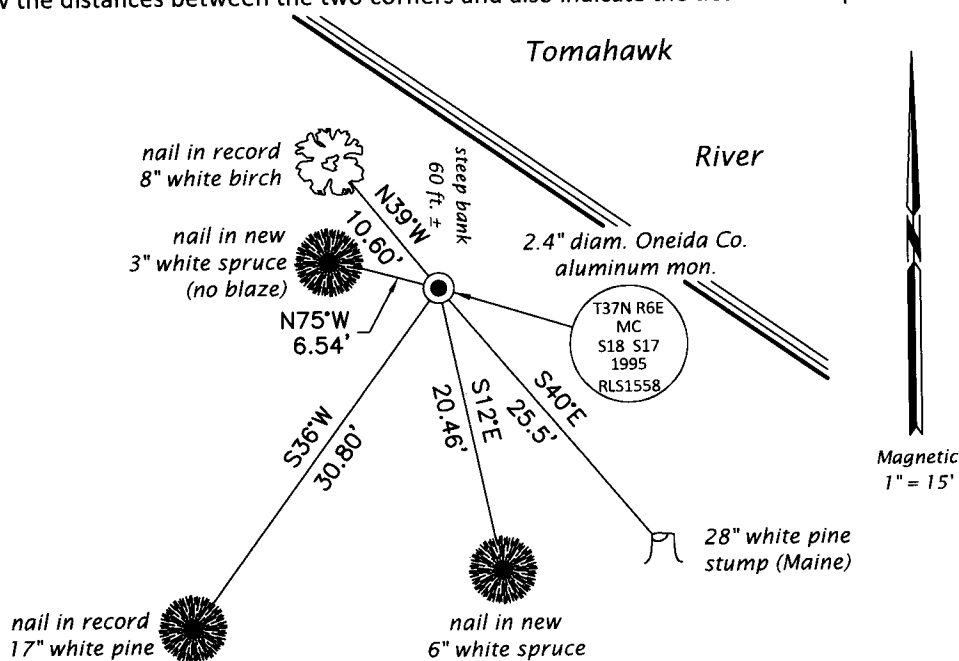
This is a perpetuation of the following monument record(s) that comprise a complete history of the corner:

Dec. 17, 1995: USPLS Monument Record No. 3706181200 by Milo E. Stefan, PLS

May 21, 2020: I found and accepted the record monument, a 2.4" diam. aluminum pipe with a 3.3" diam. Oneida Co. aluminum cap projecting 6" above the ground surface. The record stump at S70°E is gone. I found or established accessories as shown below. I found a white vinyl sign post bearing SW, 0.8 ft.

The coordinate value shown has been verified by at least one of the following methods: 1) comparison to a previously GPS determined published value; 2) the value is the average of two or more GPS observations at a markedly different time; 3) one or more distances were measured back to the GPS observed corner from temporary GPS observed offset locations.

(c)(d)(e) Plan view of corner with ties to at least 4 witness monuments. If in disagreement with previously established corner, show the distances between the the two corners and also indicate the ties to the disputed.



REGISTER OF DEEDS OFFICE
 ONEIDA COUNTY
 FILED

JUN 26 2020

KYLE J. FRANSON
 REGISTER OF DEEDS

(i) I, Jeffrey W. Austin, Professional Land Surveyor No. S-1885, hereby certify that the corner location on this record was determined by me or under my direction and control and that this U.S. Public Land Survey Monument Record is correct and complete to the best of my knowledge and belief.

[Handwritten Signature]
 Signature

JUN 5 2020
 Date

3706181200 (INDEX NO. L,M-5)