

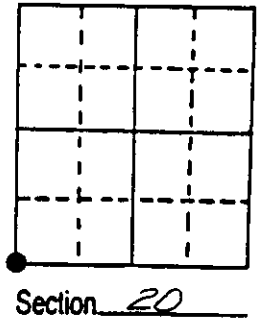
# U.S. PUBLIC LAND SURVEY MONUMENT RECORD

Note: This form is intended and designed to fulfill all requirements of Wisconsin Administrative Code, Chapter A-E 7.08 U.S. Public Land Survey Monument Record (3) (a) (b) (c) (d) (e) (f) (g) (h) (i). An additional sheet may be added if necessary to conform with said requirements.

(a) Corner location: Township 37 North  
 Range 6 East/West

Town/City/Village Cassian

County Oneida



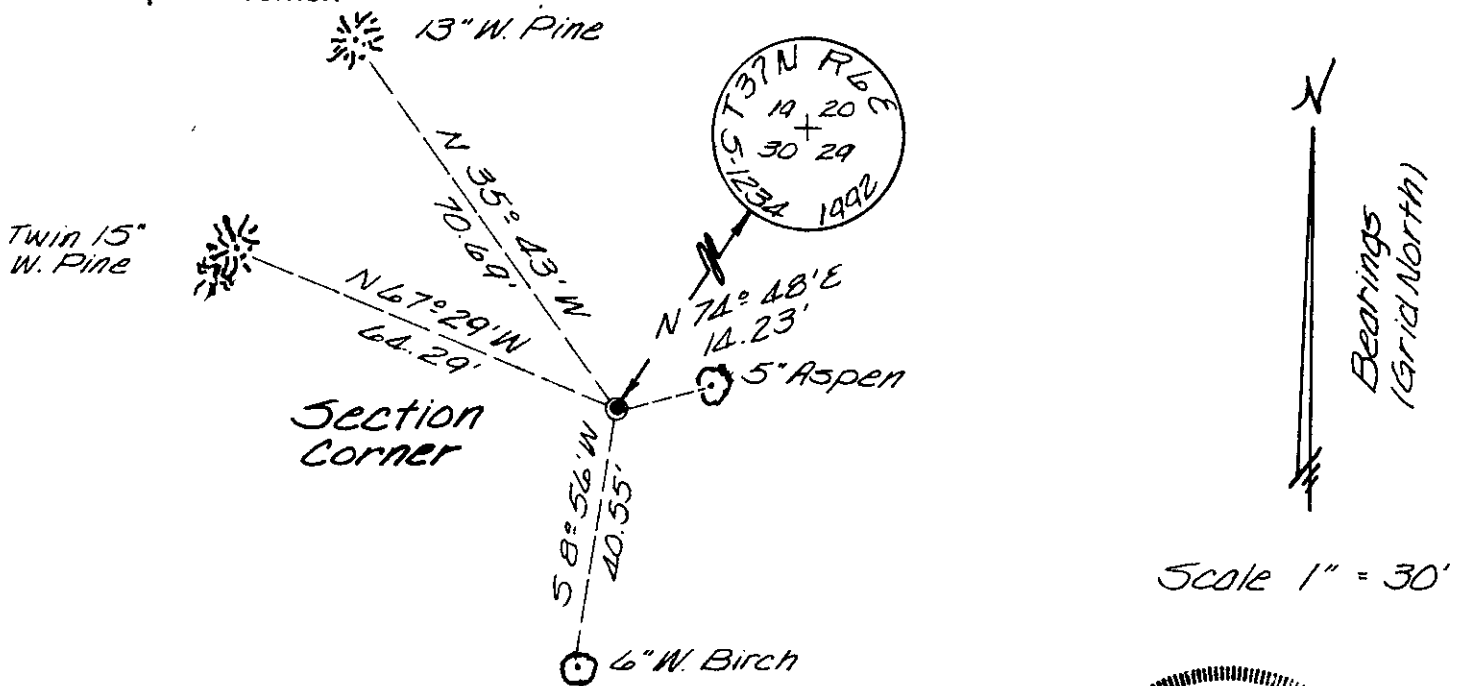
(b) (f) (g) (h) Description of monument found at this corner and if it was accepted, state all evidence (material, testimonial, occupational, plats, records, other monuments) used as a basis for accepting. If not accepted or if nothing was found, state evidence used as basis for establishing location. If reestablished through lost corner proportionate methods, indicate all monuments, distances and directions used to establish. Indicate type of monument found or set and sign post.

July 3rd, 1863 - Joseph H. Jenkins, Deputy Surveyor, set post to Sections 19, 20, 29, and 30, witnessed by two bearing trees: a 14" W. Pine bearing N72°W, 55 links and a 15" W. Pine bearing S47°E, 28 links.

1962 - Owens Illinois map, identifies corner, by others, found in place.

May 8th, 1992 - James D. Rein, RLS No. 1234, recovered a 1" dia. iron pipe witnessed by a badly decayed stump bearing S47°E, 18.5'. Replaced 1" dia. iron pipe with a capped 2" dia x 30" long aluminum monument and made reference ties as shown in plan view.

(c) (d) (e) Plan view of corner with ties to at least 4 witness monuments. If in disagreement with previously established corner, show the distances between the two corners and also indicate the ties to the disputed corner.



(i) I, James D. Rein, RLS No. 1234  
 (type or print name) certify that the corner location on this record was determined by me or under my direction and control and that this U.S. Public Land Survey Monument Record is correct and complete to the best of my knowledge and belief.

Signature

Date

May 19th, 1992



Stamp  
 3706190000

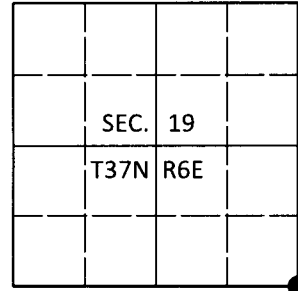
Index No. R-5

# U.S. PUBLIC LAND SURVEY MONUMENT RECORD

Note: This form is intended and designed to fulfill all requirements of Wisconsin Administrative Code, Chapter A-E 7.08 U.S. Public Land Survey Monument Record (3)(a-i).

(a) CORNER LOCATION  
 Cor. of Secs. 19, 20, 29 & 30  
 Township 37 North  
 Range 6 East of the 4th P.M.  
 Town of Cassian  
 County of Oneida

WISCRS - Oneida County  
 N: 178,071.90 USft  
 E: 170,795.43 USft  
 Datum: NAD83(2011)  
 GNSS Method: RTN - Direct  
 GNSS Control: WISCORS VRS



(b) HISTORY OF ORIGINAL CORNER ESTABLISHMENT

Original Surveyor: \_\_\_\_\_ Original Accessories: \_\_\_\_\_  
 Date of Survey Commenced: \_\_\_\_\_ see previous monument record  
 Completed: \_\_\_\_\_

(b)(f)(g)(h) Description of monument found at this corner and if it was accepted, state all evidence (material, testimonial, occupational, plats, records, other monuments) used as a basis for accepting. If not accepted or if nothing was found, state evidence used as basis for establishing location. If re-established through lost corner proportionate methods, indicate all monuments, distances and directions used to establish. Indicate type of monument and sign post found or set.

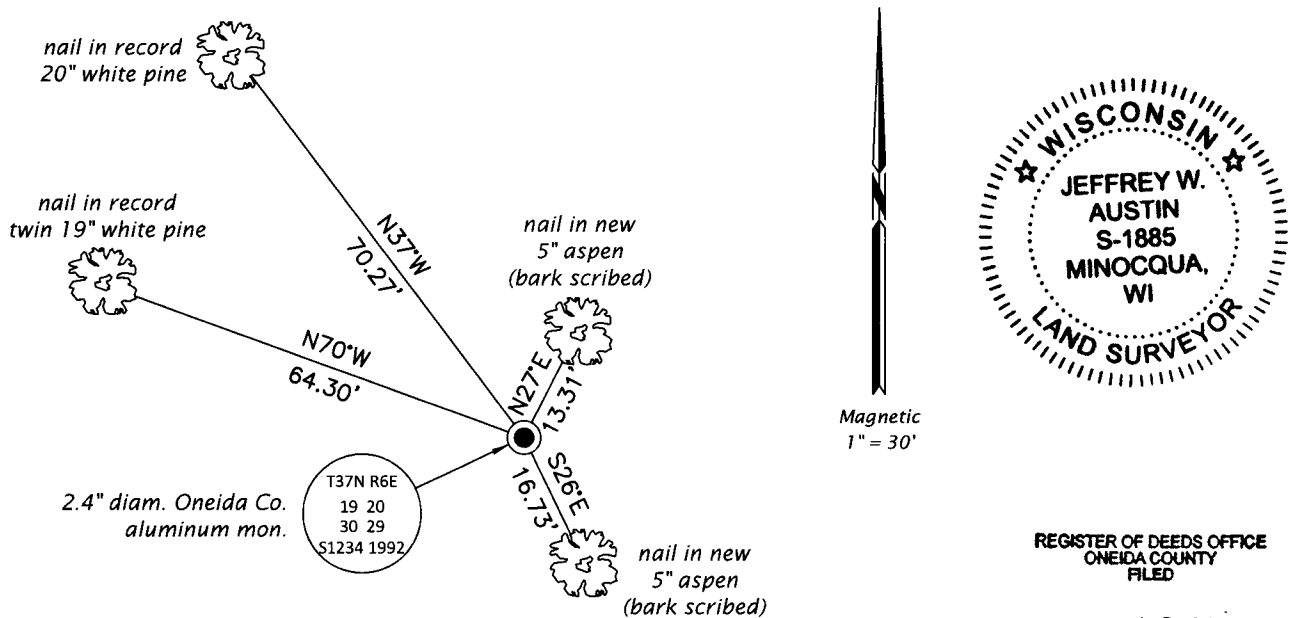
*This is a perpetuation of the following monument record(s) that comprise a complete history of the corner:*

*May 19, 1992: USPLS Monument Record No. 3706190000 by James D. Rein, RLS*

*June 4, 2019: I found and accepted the record monument, a 2.4" diam. aluminum pipe with a 3.3" diam. Oneida Co. aluminum cap projecting 2" above the ground surface. The record bearing trees at N74°E and S8°W are now stumps. I found or established accessories as shown below. I found a white vinyl sign post bearing Southeast, 1.1 ft.*

*The coordinate value shown has been verified by at least one of the following methods: 1) comparison to a previously GPS determined published value; 2) the value is the average of two or more GPS observations at a markedly different time; 3) one or more distances were measured back to the GPS observed corner from temporary GPS observed offset locations.*

(c)(d)(e) Plan view of corner with ties to at least 4 witness monuments. If in disagreement with previously established corner, show the distances between the two corners and also indicate the ties to the disputed.

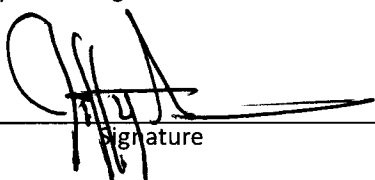


(i) I, Jeffrey W. Austin, Professional Land Surveyor No. S-1885, hereby certify that the corner location on this record was determined by me or under my direction and control and that this U.S. Public Land Survey Monument Record is correct and complete to the best of my knowledge and belief.

REGISTER OF DEEDS OFFICE  
 ONEIDA COUNTY  
 FILED

JUN 18 2019

KYLE J. FRANSON  
 REGISTER OF DEEDS

 \_\_\_\_\_  
 Signature Date: 7 JUNE 2019