

# U.S. PUBLIC LAND SURVEY MONUMENT RECORD

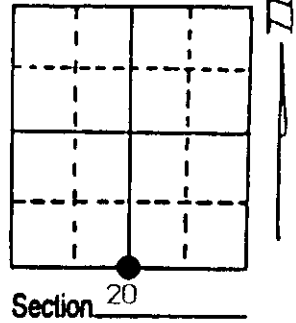
Note: This form is intended and designed to fulfill all requirements of Wisconsin Administrative Code, Chapter A-E 7.08 U.S. Public Land Survey Monument Record (3) (a) (b) (c) (d) (e) (f) (g) (h) (i). An additional sheet may be added if necessary to conform with said requirements.

(a) Corner location: Township 37 North

Range 6 East/West

Town/City/Village Cassian

County Oneida



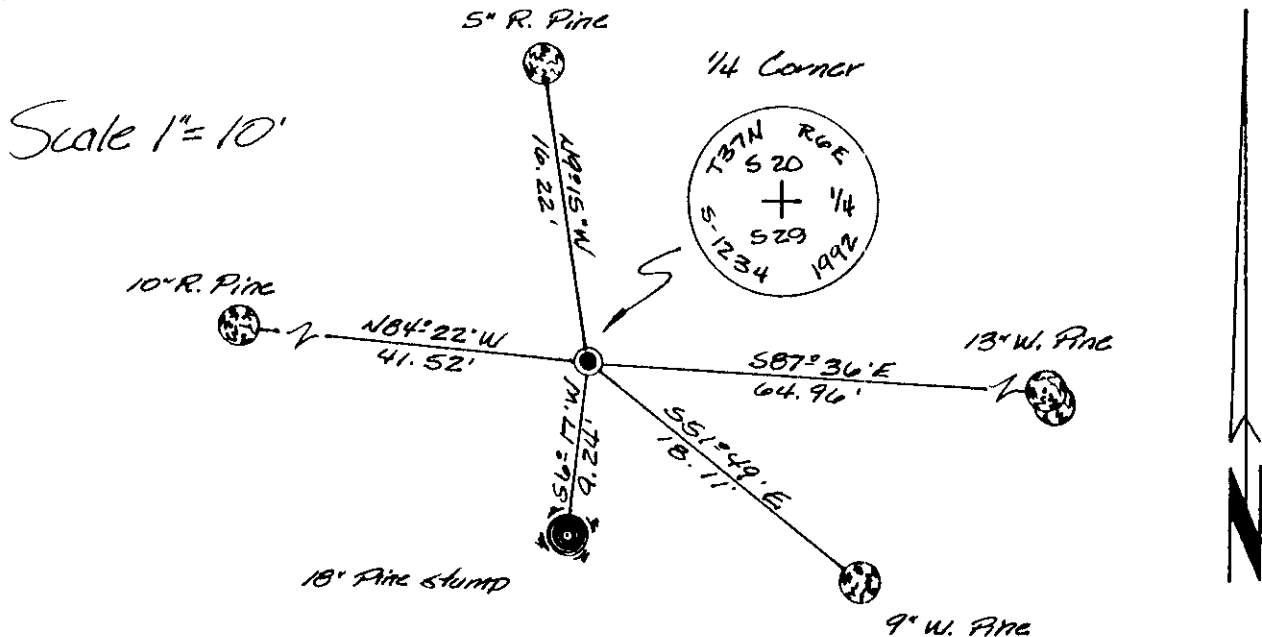
(b) (f) (g) (h) Description of monument found at this corner and if it was accepted, state all evidence (material, testimonial, occupational, plats, records, other monuments) used as a basis for accepting. If not accepted or if nothing was found, state evidence used as basis for establishing location. If reestablished through lost corner proportionate methods, indicate all monuments, distances and directions used to establish. Indicate type of monument found or set and sign post.

July 3rd, 1863 - Joseph H. Jenkins, Deputy Surveyor, set post witnessed by two bearing trees: a 20" Y. Pine bearing S3°W, 14 links; and a 8" Aspen bearing N42°W, 40 links.

Oct. 25th, 1905 - B. F. Dorr, County Surveyor, recovered the original 1/4 post witnessed by two bearing trees: a 20" Norway stump bearing S3°W, 14 links; and a 10" Aspen stub bearing N34 1/2°E, 44 links.

May 10th, 1992 - James D. Rein, Registered Land Surveyor, recovered the humus stained original post hole witnessed by the badly decayed original bearing tree Red Pine stump bearing S6°17'W, 9.24. Set a capped 2" dia. aluminum monument in the original post hole. Made new reference ties as shown in plan view. This corner position is in harmony with B.F. Dorr's recovered corners, for his survey in Section 29. Set a plastic post 1' Southwest of corner.

(c) (d) (e) Plan view of corner with ties to at least 4 witness monuments. If in disagreement with previously established corner, show the distances between the two corners and also indicate the ties to the disputed corner.



(i) I, James D. Rein, RLS No. 1234  
 (type or print name) certify that the corner location on this record was determined by me or under my direction and control and that this U.S. Public Land Survey Monument Record is correct and complete to the best of my knowledge and belief.

Signature

*James D. Rein*

May 19th, 1992  
 Date



Stamp 3706200020

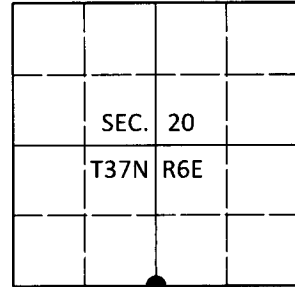
Index No. R-7

# U.S. PUBLIC LAND SURVEY MONUMENT RECORD

Note: This form is intended and designed to fulfill all requirements of Wisconsin Administrative Code, Chapter A-E 7.08 U.S. Public Land Survey Monument Record (3)(a-i).

(a) CORNER LOCATION  
 1/4 Cor. of Secs. 20 & 29  
 Township 37 North  
 Range 6 East of the 4th P.M.  
 Town of Cassian  
 County of Oneida

WISCRS - Oneida County  
 N: 178,038.33 USft  
 E: 173,439.12 USft  
 Datum: NAD83(2011)  
 GNSS Method: RTN - Direct  
 GNSS Control: WISCORS VRS



(b) HISTORY OF ORIGINAL CORNER ESTABLISHMENT

Original Surveyor: \_\_\_\_\_ Original Accessories: \_\_\_\_\_  
 Date of Survey Commenced: \_\_\_\_\_ see previous monument record  
 Completed: \_\_\_\_\_

(b)(f)(g)(h) Description of monument found at this corner and if it was accepted, state all evidence (material, testimonial, occupational, plats, records, other monuments) used as a basis for accepting. If not accepted or if nothing was found, state evidence used as basis for establishing location. If re-established through lost corner proportionate methods, indicate all monuments, distances and directions used to establish. Indicate type of monument and sign post found or set.

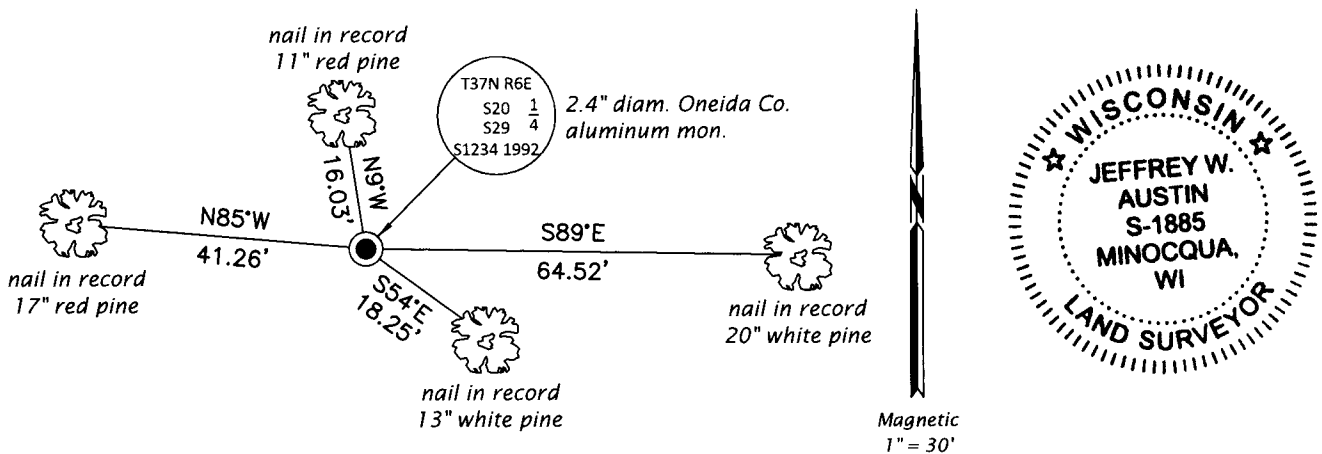
*This is a perpetuation of the following monument record(s) that comprise a complete history of the corner:*

*May 19, 1992: USPLS Monument Record No. 3706200020 by James D. Rein, RLS*

*June 4, 2019: I found and accepted the record monument, a 2.4" diam. aluminum pipe with a 3.3" diam. Oneida Co. aluminum cap projecting 8" above the ground surface. I found or established accessories as shown below. I found a white vinyl sign post bearing Southwest, 0.7 ft.*

*The coordinate value shown has been verified by at least one of the following methods: 1) comparison to a previously GPS determined published value; 2) the value is the average of two or more GPS observations at a markedly different time; 3) one or more distances were measured back to the GPS observed corner from temporary GPS observed offset locations.*

(c)(d)(e) Plan view of corner with ties to at least 4 witness monuments. If in disagreement with previously established corner, show the distances between the two corners and also indicate the ties to the disputed.

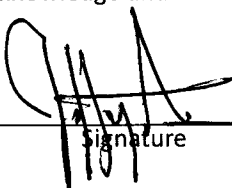


REGISTER OF DEEDS OFFICE  
 ONEIDA COUNTY  
 FILED

JUN 18 2019

KYLE J. FRANSON  
 REGISTER OF DEEDS

(i) I, Jeffrey W. Austin, Professional Land Surveyor No. S-1885, hereby certify that the corner location on this record was determined by me or under my direction and control and that this U.S. Public Land Survey Monument Record is correct and complete to the best of my knowledge and belief.

  
 Signature

7 JUNE 2019  
 Date

3706200020 (INDEX NO. R-7)