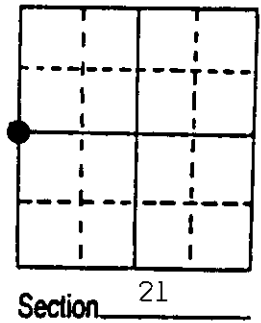


U.S. PUBLIC LAND SURVEY MONUMENT RECORD

Note: This form is intended and designed to fulfill all requirements of Wisconsin Administrative Code, Chapter A-E 7.08 U.S. Public Land Survey Monument Record (3) (a) (b) (c) (d) (e) (f) (g) (h) (i). An additional sheet may be added if necessary to conform with said requirements.

(a) Corner location: Township 37 North
 Range 6 East/West
 Town/City/Village Cassian
 County Oneida



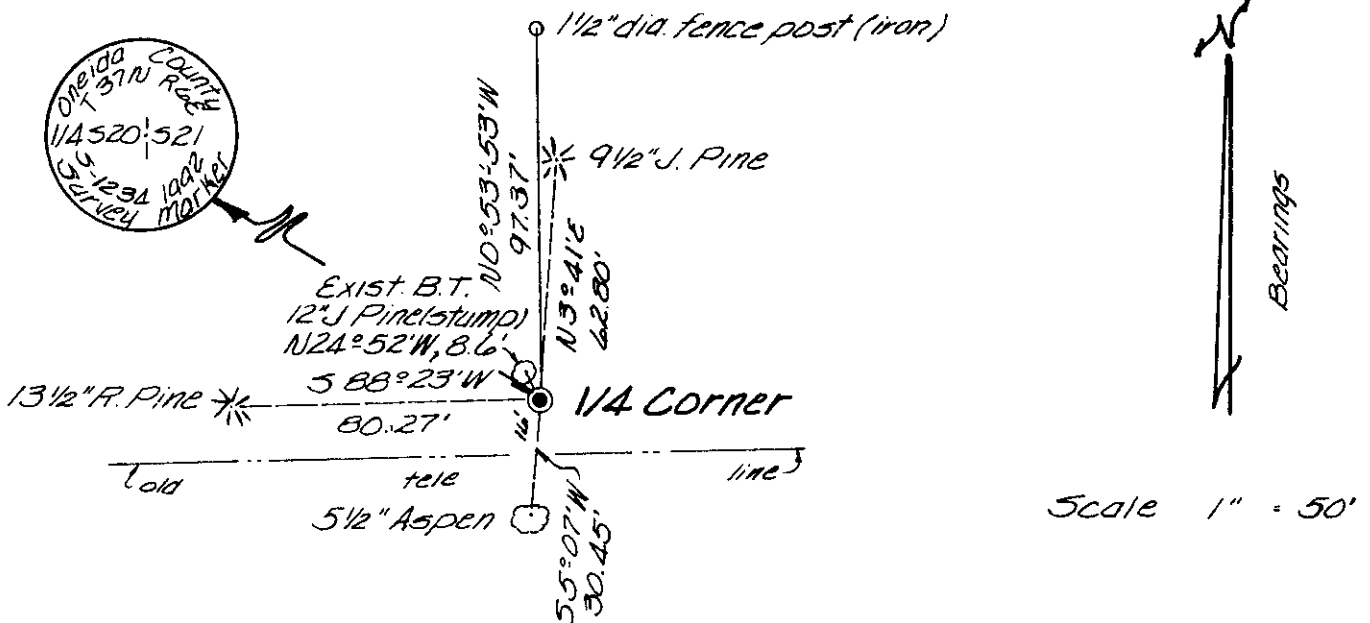
(b) (f) (g) (h) Description of monument found at this corner and if it was accepted, state all evidence (material, testimonial, occupational, plats, records, other monuments) used as a basis for accepting. If not accepted or if nothing was found, state evidence used as basis for establishing location. If reestablished through lost corner proportionate methods, indicate all monuments, distances and directions used to establish. Indicate type of monument found or set and sign post.

July 3rd, 1863 - Joseph H. Jenkins, Deputy Surveyor, set 1/4 post witnessed by two bearing trees: an 8" B. Pine bearing N42°W, 16 links; and a 14" Y. Pine bearing S63°E, 13 links.

July 10th, 1973 - John H. Fisher, RLS, (Northwoods Surveyors, Inc.) on plat of Rocky Run Heights identifies corner as being a 1" iron pipe found in place, witnessed by a 12" J. Pine N25°W, 7.0'.

May 24th, 1992 - James D. Rein, Registered Land Surveyor, recovered a 3/4" dia. aluminum pipe witnessed by a 12" Jack Pine stump bearing N25°W, 8.6'. I replaced the aluminum pipe with a capped 2" dia. aluminum monument. Made new reference ties as shown in plan view.

(c) (d) (e) Plan view of corner with ties to at least 4 witness monuments. If in disagreement with previously established corner, show the distances between the two corners and also indicate the ties to the disputed corner.



(i) I, James D. Rein, RLS No. 1234
 (type or print name) certify that the corner location on this record was determined by me or under my direction and control and that this U.S. Public Land Survey Monument Record is correct and complete to the best of my knowledge and belief.



James D. Rein May 19th, 1992
 Signature Date

Stamp
 3706202000

Index No. P-9

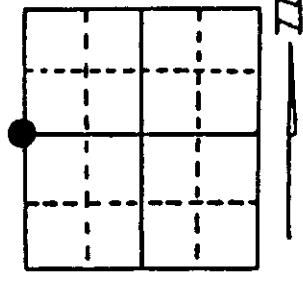
U.S. PUBLIC LAND SURVEY MONUMENT RECORD

Note: This form is intended and designed to fulfill all requirements of Wisconsin Administrative Code, Chapter A-E 7.08 U.S. Public Land Survey Monument Record (3) (a) (b) (c) (d) (e) (f) (g) (h) (i). An additional sheet may be added if necessary to conform with said requirements.

(a) Corner location: Township 37 North
 Range 6 East/West

Town/City/Village Cassian

County Oneida



Section 21

(b) (f) (g) (h) Description of monument found at this corner and if it was accepted, state all evidence (material, testimonial, occupational, plats, records, other monuments) used as a basis for accepting. If not accepted or if nothing was found, state evidence used as basis for establishing location. If reestablished through lost corner proportionate methods, indicate all monuments, distances and directions used to establish. Indicate type of monument found or set and sign post.

1863 - Joseph H. Jenkins established this corner and set a wood post with two BTs:
 8" Jack Pine, N42°W, 16 Links (10.56') 14" Red Pine, S63°E, 13 Links (8.58')
 (RLS-1234)

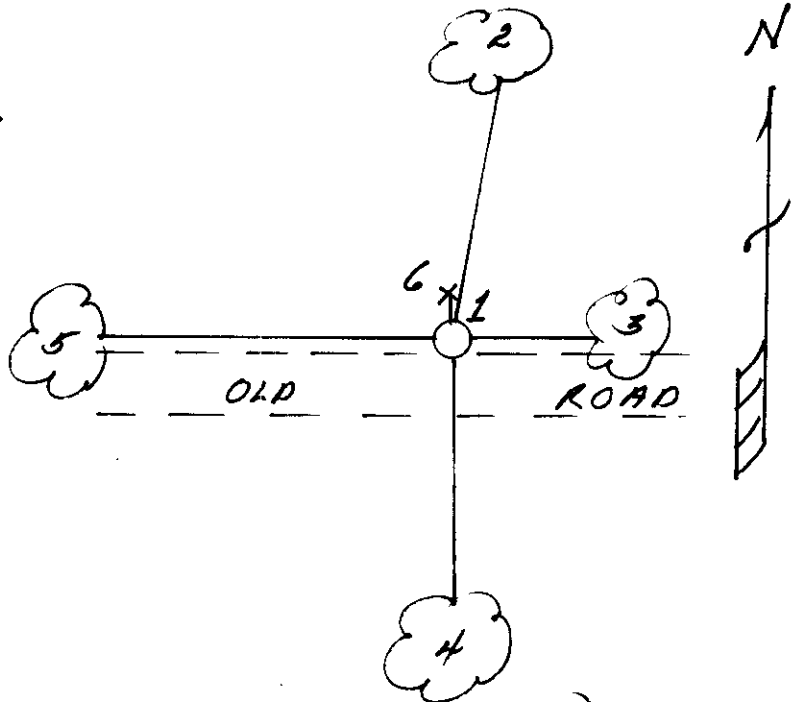
1990 - Jim Rein set 2" x 30" aluminum monument. We found three BTs - no record on file.

11/16/1994 - Milo E. Stefan found Rein's monument, made one new BT and took bearings and distances to Rein's BTs. Also, an old BT - down - 12" Jack Pine, N20°W, 7.8'.

(c) (d) (e) Plan view of corner with ties to at least 4 witness monuments. If in disagreement with previously established corner, show the distances between the two corners and also indicate the ties to the disputed corner.

- 1) 2" x 30" Aluminum County Monument.
- 2) 8" Jack Pine, N4°E, 62.90' (Rein's).
- 3) 6" Aspen, East, 8.89' (new)
- 4) 6" Aspen, South, 30.48' (Rein's)
- 5) 14" Red Pine, West, 80.38' (Rein's)
- 6) Plastic Sign Post next to monument.

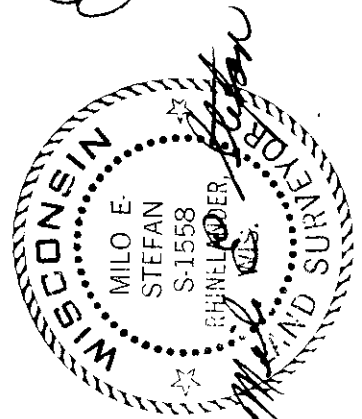
Distances to nail in side of BTs.
 Stump blazes scribed "BT".



(i) I, Milo E. Stefan
 (type or print name) certify that the corner location on this record was determined by me or under my direction and control and that this U.S. Public Land Survey Monument Record is correct and complete to the best of my knowledge and belief.

Milo E. Stefan
 Signature

November 28, 1994
 Date



3706202000

JUN 12 2023

KYLE J. FRANSON
REGISTER OF DEEDS

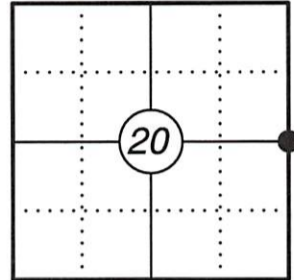
U.S. PUBLIC LAND SURVEY MONUMENT RECORD

This form is intended and designed to fulfill all requirements of Wisconsin Administrative Code, Chapter A-E 7.08 U.S. Public Land Survey Monument Record (3) (a)(b)(c)(d)(e)(f)(g)(h)(i). An additional sheet may be added if necessary to confirm with said requirements.

(a) Corner Location:

East 1/4 Corner Section 20
Township 37 North
Range 6 East
Town of Cassian
County of Oneida

Corner ID: 3706202000



(b) History of Original Corner:

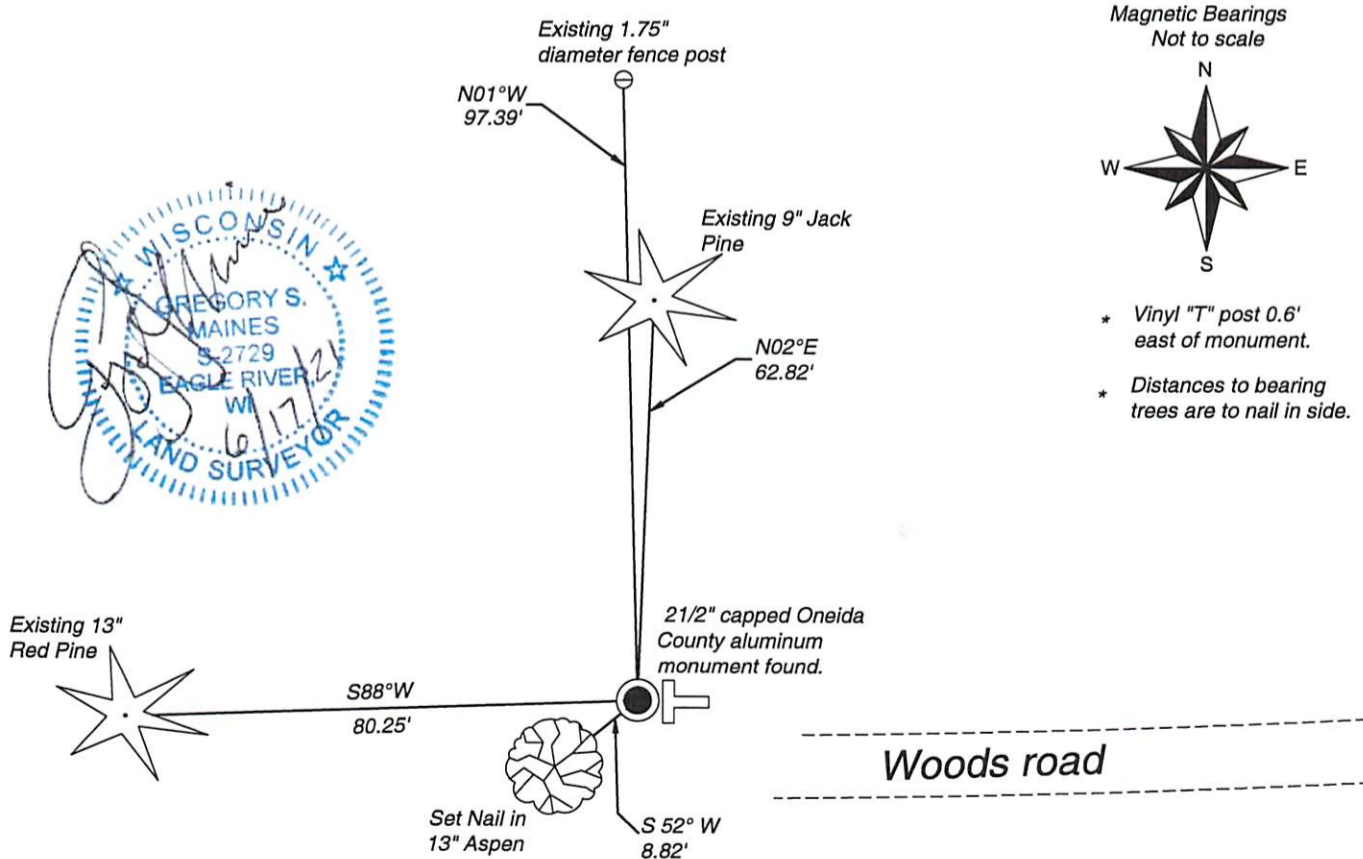
Original Surveyor: Joseph H. Jenkins Original B.T.'s: 8" Black Pine - N 42° W, 16 Links
Date of Survey: July 1, 1863 14" Yellow Pine - S 63° E, 13 Links

(f)(g)(h) Description of monument found at this corner and if it was accepted, state all evidence (material, testimonial, occupational, plats, records, other monuments) used as a basis for establishing location. If reestablishing through lost corner proportionate methods, indicate all monuments, distances, and directions used to establish. Indicate type of monument and sign post found or set.

For corner history, see previous U.S. Public Land Survey Monument Record by Milo E. Stefan, dated November 28, 1994.

06/09/2021 - I found and accepted a 2 1/2" capped Oneida County aluminum monument as well as three existing ties from previous tie sheet. I established one new bearing object and measured to the three existing bearing objects as shown below.

(c)(d)(e) Plan view of corner with ties to at least four witnesses. If in disagreement with previously established corner, show the distances between the two corners and also indicate the tie to the disputed corner.



Certification

I, Gregory S. Maines, Professional Land Surveyor No. 2729, hereby certify that the corner location on this record was referenced by me or under my direction and control and that this U.S. Public Land Survey Monument Record is complete to the best of my knowledge and belief. REF: 2020143

Index No.: P-9