

Stock No. 26273

U. S. PUBLIC LAND SURVEY MONUMENT RECORD

INSTRUCTIONS: This record shall show the location of the corner and shall include all of the following nine elements (a through i).

(A) Identify the corner by reference to the U.S. public land survey system.

RECORD INFORMATION

June 1863 - J. H. Jenkins, U.S. Deputy Surveyor set post corner to Sections 22, 23, 26 and 27, witnessed by the following bearing trees:

White Pine 5" N15°W, 10 links

White Pine 8" S60°W, 24 links

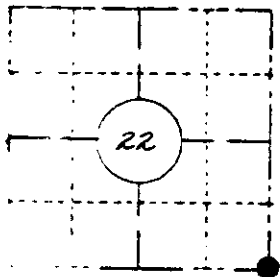
June 12, 1906 - D. H. Vaughan, Oneida County Surveyor found stumps of original trees

1930's - U. S. Highway No. 51 Plat of Right-of-Way identifies corner at sta. 796+66-18' right of centerline monumented by an iron pipe.

August 24th, 1970 - Wis. Dept. of Transportation corner search by Scherer I.D. 1177-1-00 shows no monument found at Station 796+/- 46

April 1974 - John H. Fisher, R.L.S. map by Northwoods Surveyors, Inc. identifies corner as marked by an iron pipe in east side of road, witnessed by a nail in a 15" White Pine N77°E, 40.9 feet and by a nail in a 9" Norway Pine, S30°E, 62.0 feet.

SECTION 22
T37N R6E



LOCATION SKETCH

Location of landmark indicated by "●"



(B) Describe any record evidence, monument evidence, occupational evidence, testimonial evidence, or any other material evidence you considered, and whether the monument was found or placed

December 9th, 1982

Found a 3/4" diameter iron rod 5 inches below surface of gravel shoulder 17.2 feet east of the existing as built centerline of U.S. Highway "51", witnessed by a

Spike in a 19" White Pine bears N76°-56'E, 40.83 feet

Spike in a 13" Red Pine bears S29°-13'E, 61.73 feet

Compared with all record data & accepted as correct.

Robert H. Vinski

Oneida County Surveyor 27 Apr 1983

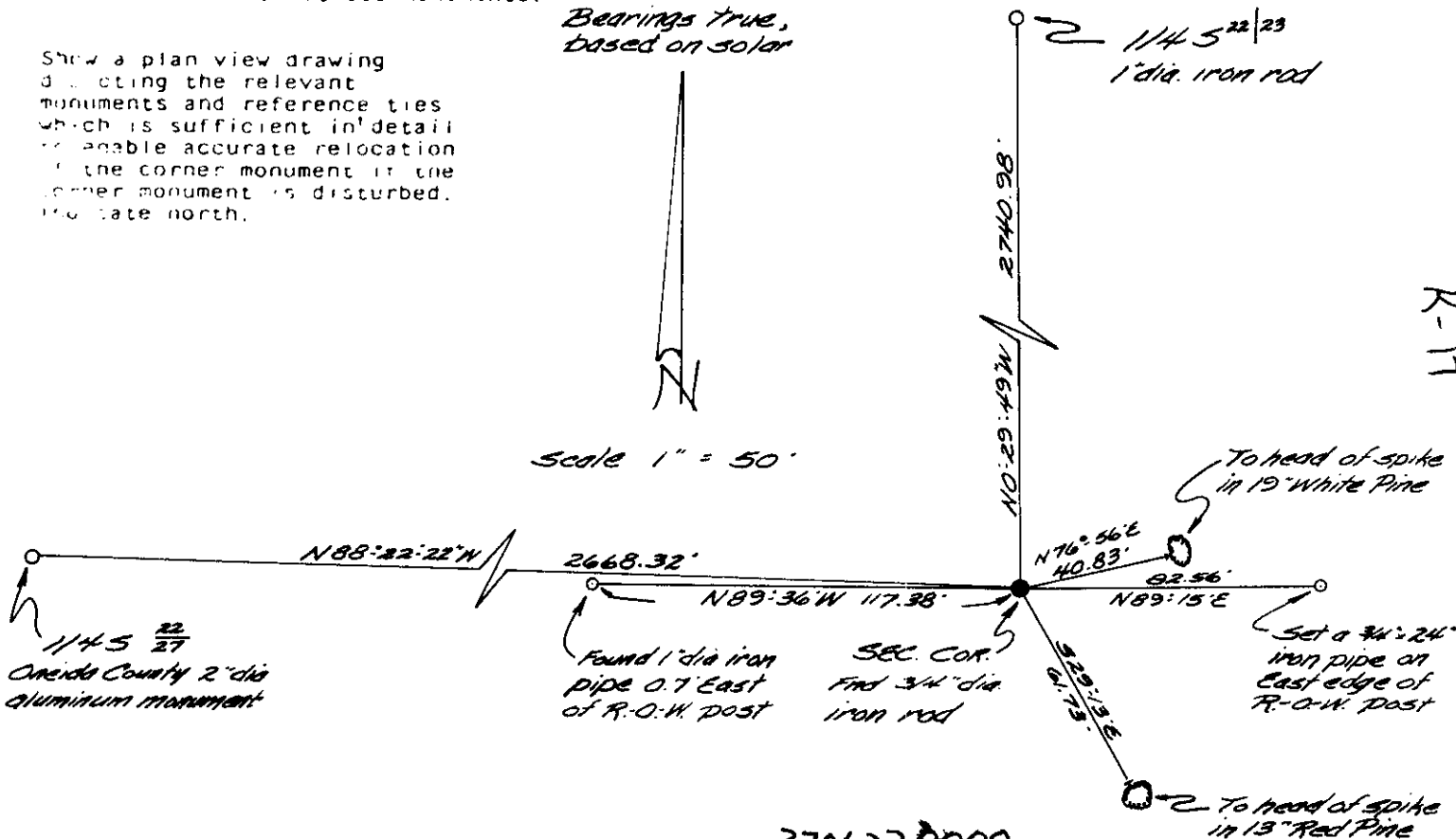
In the plan view drawing below, provide reference ties to at least 4 witness monuments, or if the location is within a municipality to at least 2 witness monuments. (Witness monuments shall be made of concrete, natural stone, iron or other equally durable material, Describe witness monuments.

Show a plan view drawing depicting the relevant monuments and reference ties which is sufficient in detail to enable accurate relocation of the corner monument if the corner monument is disturbed. Indicate north.

Bearings true, based on solar



Scale 1" = 50'



3706220000

Describe any material discrepancy between the location of the corner as restored or reestablished and the location of that corner as previously restored or established by distance and direction. Show the discrepancy on the plan view drawing under (d) above. Show the distances between the corner as previously restored or established and (1) the corner as restored or reestablished, and (2) to at least two other monuments shown on the drawing in (d), above.

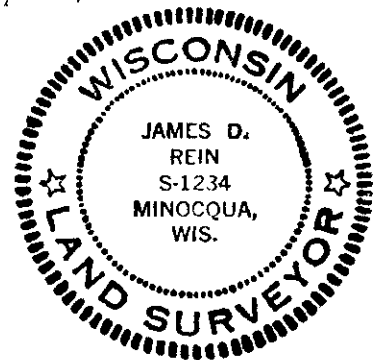
Was the corner restored through acceptance of (1) an obliterated evidence location or (2) a found perpetuated location?

I accepted the corner position of the iron rod monument as being the best remaining evidence for the original corner location based upon obliterated evidence.

Was the corner reestablished through lost corner proportionate method? If so, show the method, including the directions and distances to other public land survey or permanent evidence or used for proportioning in determining the corner location.

No.

REGISTER OF DEEDS OFFICE
ONEIDA COUNTY, WIS.
FILED
MAY 11 1983
At 4:15 O'Clock P.M.
DORIS VERAGE KUEHN
REGISTER OF DEEDS



JAMES D. REIN, Registered Land Surveyor No. S-1234

James D Rein

December 29th, 1982

R 17

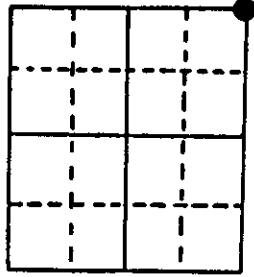
U.S. PUBLIC LAND SURVEY MONUMENT RECORD

Note: This form is intended and designed to fulfill all requirements of Wisconsin Administrative Code, Chapter A-E 5.02, U.S. Public Land Survey Monument Record (3) (a) (b) (c) (d) (e) (f) (g) (h) (i). An additional sheet may be added if necessary to conform with said requirements.

(a) Corner location: Township 37 North
 Range 6 East/West

Town/City/Village Cassian

County Oneida



Section 27

(b) (f) (g) (h) Description of monument found at this corner and if it was accepted, state all evidence (material, testimonial, occupational, plats, records, other monuments) used as a basis for accepting. If not accepted or if nothing was found, state evidence used as basis for establishing location. If reestablished through lost corner proportionate methods, indicate all monuments, distances and directions used to establish.

The original Government Survey was performed by Joseph H. Jenkins in June & July, 1863. A wood post was set: W. Pine 6 N15W, 10 lks.; W. Pine 8 S60W, 24 lks.

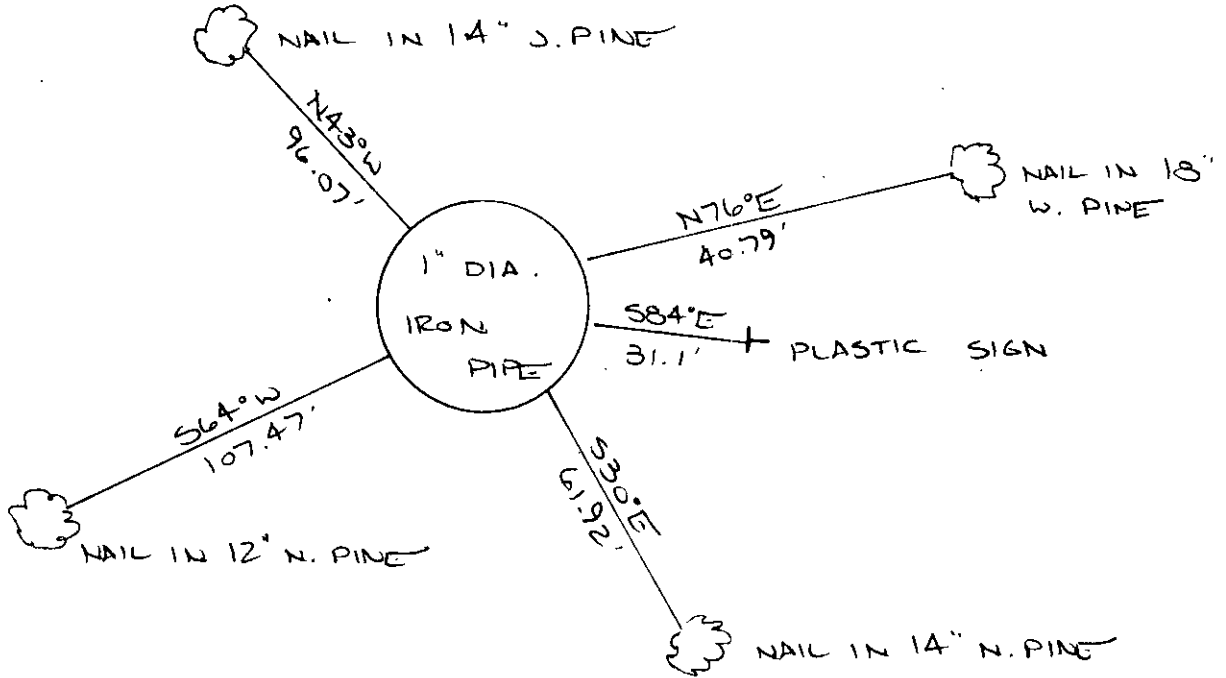
D.H. Vaughn in 1906 states: South 39.76 found stump East tree, marks plain.

DOT right of way plat lists corner as: iron pipe 18' R. of CL sta. 796+66.

Wilderness Surveying Map no. 82-111 lists corner as 3/4" dia. iron rod: 19' W. Pine N76 56'E, 40.83'; 13' R. Pine S29 13'E, 61.73'.

I found and accepted; 3/4" iron rod 6" below grade, 2' east of pavement, I set a 1" dia., 30" long iron pipe over the existing rod. I established the following witnesses: Nail found W. Pine 18" N76E, 40.79'; nail found N. Pine 14" S30E, 61.92'; Nail set J. Pine 14" N43W, 96.07'; nail set

(c) (d) (e) Plan view of corner with ties to at least 4 witness monuments. If in disagreement with previously established corner, show the distances between the two corners and also indicate the ties to the disputed corner. N. Pine 12" S64W, 107.47'; set plastic survey marker sign S84E, 31.1'.



(i) I, JEFFREY W. AUSTIN S-1885

(type or print name) certify that the corner location on this record was determined by me or under my direction and control and that this U.S. Public Land Survey Monument Record is correct and complete to the best of my knowledge and belief.

Signature

Date FEBRUARY 1, 1989



Index No. R-17

3706220000

U.S. PUBLIC LAND SURVEY MONUMENT RECORD

REGISTER OF DEEDS OFFICE
ONEIDA COUNTY
FILED

NOV 13 2018

JAMES D. REIN
REGISTER OF DEEDS

Note: This form is intended and designed to fulfill all requirements of the Wisconsin Administrative Code, Chapter A-E 7.08 U.S. Public Land Monument Record (3)(a)(b)(c)(d)(e)(f)(g)(h)(i). An additional sheet may be added if necessary to conform with said requirements.

(a) CORNER LOCATION:

Northeast Corner of Section 27
Township 37 North
Range 6 East
Town of Cassian
County of Oneida

North:
East:
Datum:
GNSS Method:
GNSS Control:

(RECORDING AREA)

SECTION 27

(b) HISTORY OF ORIGINAL CORNER ESTABLISHMENT

Original Surveyor:
Date of Survey: Commenced
Completed
Original B.T.'S

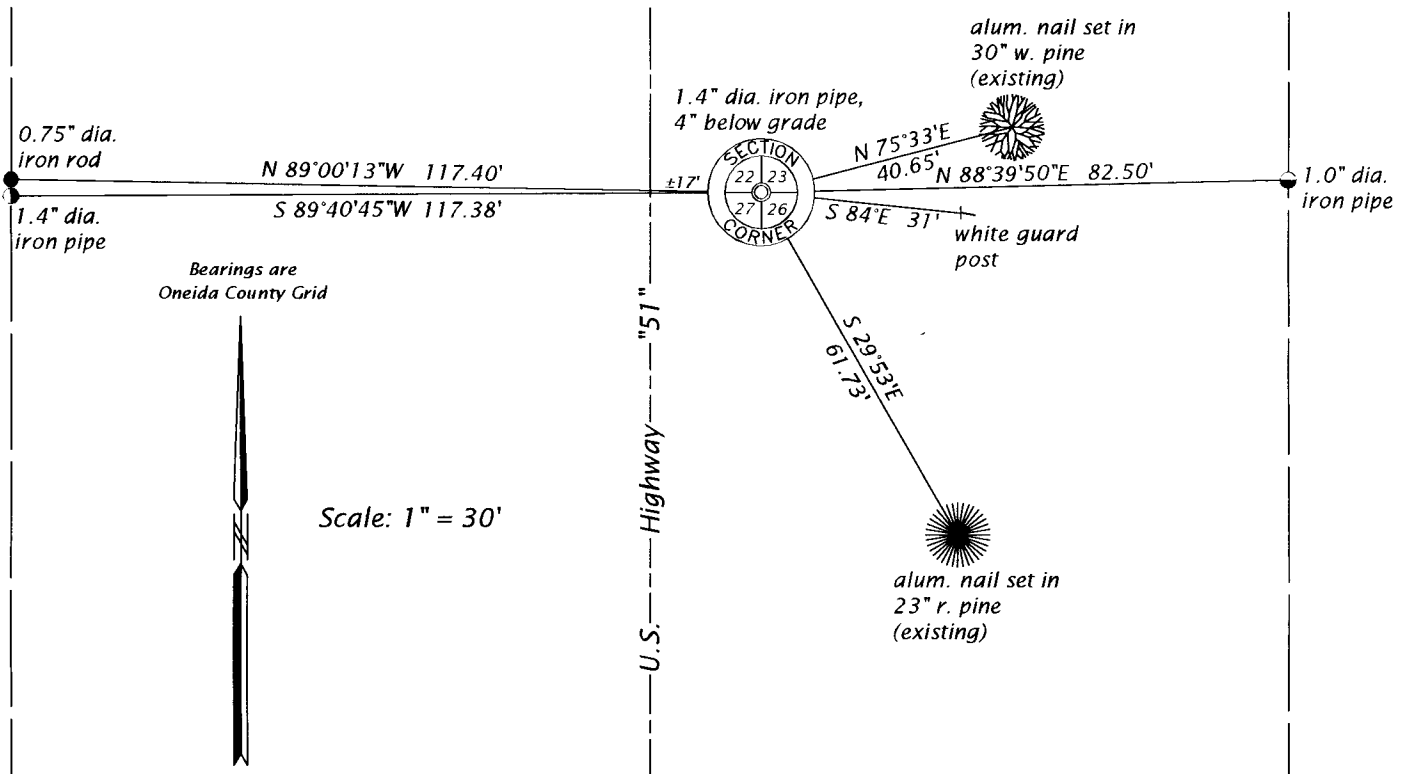
SEE PREVIOUS U.S.P.L.S. MONUMENT
RECORD DATED FEBRUARY 1, 1989.

(f)(g)(h) DESCRIPTION OF MONUMENT FOUND AT THIS CORNER AND IF IT WAS ACCEPTED, STATE ALL EVIDENCE (MATERIAL, TESTIMONIAL, OCCUPATIONAL, PLATS, RECORD, OTHER MONUMENTS) USED AS A BASIS FOR ESTABLISHING LOCATION. IF NOT ACCEPTED OR IF NOTHING WAS FOUND, STATE EVIDENCE USED AS BASIS FOR ESTABLISHING LOCATION. IF REESTABLISHED THROUGH LOST CORNER PROPORTIONATE METHODS, INDICATE ALL MONUMENTS, DISTANCES AND DIRECTIONS USED TO ESTABLISH. INDICATE TYPE OF MONUMENT AND SIGN POST FOUND OR SET.

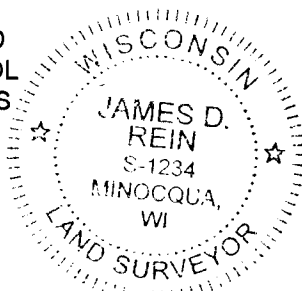
This is a perpetuation of a previous U.S.P.L.S. Monument Record by Jeffrey W. Austin, RLS, dated February 1, 1989, and filed in the office of the Oneida County Register of Deeds. A complete history of the corner can be found on the previous monument record. I accept the previous location as a true and faithful perpetuation or reestablishment of the original corner location and further perpetuate it as follows.

November 28, 2017, I, James D. Rein, P.L.S. No. S-1234, found an accepted the 1.4" dia. (od) iron pipe used by Austin in 1989. His northwesterly jack pine and southwesterly red pine (norway) are now gone - see below for updated witnesses.

(c)(d)(e) PLAN VIEW OF CORNER WITH TIES TO AT LEAST 4 WITNESS MONUMENTS. IF IN DISAGREEMENT WITH PREVIOUSLY ESTABLISHED CORNER, SHOW THE DISTANCE BETWEEN THE TWO CORNERS AND ALSO INDICATE THE TIES TO THE DISPUTED CORNER.



(i) I, JAMES D. REIN, PROFESSIONAL LAND SURVEYOR NO. S-1234 HEREBY CERTIFY THAT THE CORNER LOCATION ON THIS RECORD WAS DETERMINED BY ME OR UNDER MY DIRECTION AND CONTROL AND THAT THIS U.S. PUBLIC LAND SURVEY MONUMENT RECORD IS CORRECT AND COMPLETE TO THE BEST OF MY KNOWLEDGE AND BELIEF.



James D. Rein
SIGNATURE

5-31-18
DATE

INDEX NO. R - 17
3706220000

22 SECTION 37 TOWN 06E RANGE

ONEIDA COUNTY

COUNTY CORNER NO: R-17

ROMPORTOL ID: 43708220000

PUBLIC LAND SURVEY MONUMENT RECORD

TYPE OF MONUMENT: 1-1/4" OD IRON PIPE
WISCRS ONEIDA COUNTY, NAD 83 (2011)

N. 177889.251

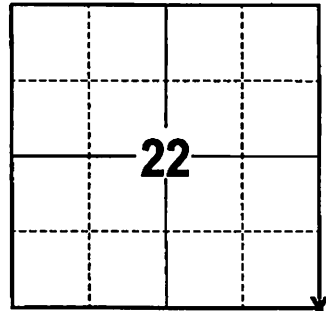
E. 186625.236

ELEVATION- DATUM

FIELD WORK DATE: 09-29-2021

BASIS FOR MONUMENT LOCATION

- 1863 - JOSEPH H. JENKINS/GLO SET WOOD POST AS ORIGINAL SECTION CORNER
- 1906 - D.H. VAUGHN STATES "SOUTH 39.76 FOUND STUMP EAST TREE, MARKS PLAIN"
- WISDOT RIGHT-OF-WAY PLAT LISTS CORNER AS: IRON PIPE 18' RIGHT OF CL STA 796+66.
- WILDERNESS SURVEY MAP NO. 82-111 SHOWS CORNER AS 3/4" IRON ROD AND TIED OUT.
- 1989 - JEFFREY W. AUSTIN (PLS 1885) FOUND AND ACCEPTED 3/4" IRON ROD 6" BELOW ROAD GRADE 2' EAST OF PAVEMENT EDGE AND SET 1-1/4" OD IRON PIPE OVER EXISTING IRON ROD AND TIED OUT.
- 2017 - JAMES D. REIN (PLS 1234) FOUND AND ACCEPTED PLS 1885 1-1/4" OD IRON PIPE AND RETIED
- 2021 - PRIOR TO A WISDOT PAVING PROJECT I FOUND 1-1/4" OD IRON PIPE 8" BELOW THE ROAD SHOULDER AND THE 3 EXISTING TIES. THE 1-1/4" OD IRON PIPE AGREES WITH ALL THE TIES. ACCEPTED THE 1-1/4" OD IRON PIPE AS THE CORNER LOCATION AND SET 2 NEW TIES AND MEASURED TO THE EXISTING. RE SET 3/4"X24 IRON REBAR AFTER CONSTRUCTION WAS COMPLETED.



LOCATION
(INDICATE CORNER BY "X")

SEAL:



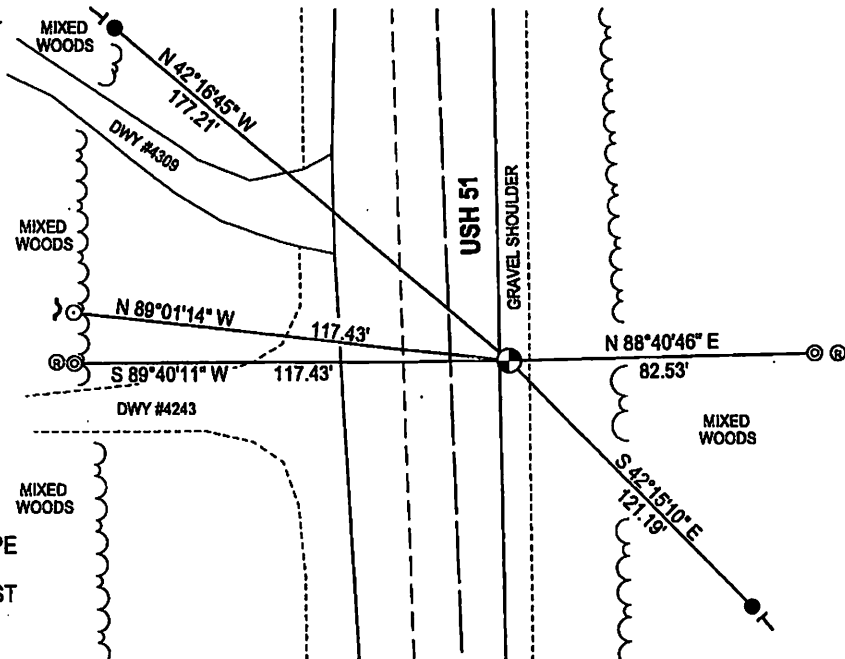
DATA SHOWN HERE ON THIS TIE SHEET IS CORRECT AND COMPLETE TO THE BEST OF MY KNOWLEDGE AND BELIEF.

PROFESSIONAL LAND SURVEYOR

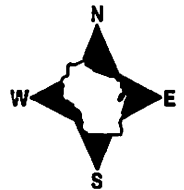
DATE 12/10/2021

TIE SKETCH

NOTE: CORNER FALLS 16.5' EAST OF USH 51 CENTERLINE



- FOUND 3/4" IRON ROD
- ⊙ FOUND 1-1/4" O.D. IRON PIPE
- SET 3/4"X24" IRON REBAR
- ⊙ WOODEN WISDOT R/W POST
- | VINYL "T" POST
- | STEEL POST



REGISTER OF DEEDS OFFICE
ONEIDA COUNTY
FILED

DEC 21 2021

KYLE J. FRANSON
REGISTER OF DEEDS