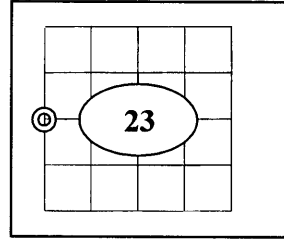


U.S. PUBLIC LAND SURVEY MONUMENT RECORD

Note: This form is intended and designed to fulfill all requirements of Wisconsin Administrative Code Chapter A-E 7.08 (3) (a-i).

(a) Corner: West 1/4
 Section: 23
 Township: 37 N.
 Range: 06 E.
 Town: Cassian
 County: Oneida



(b) History of Original Corner

| | | | |
|-------------------|-------------------|-----------------|----------------|
| Original Surveyor | Joseph H. Jenkins | Original B.T.'s | |
| Date of Survey | 1863 | 8" Black Pine | N68°E 18 links |
| | | 10" Aspen | S68°W 69 links |

- In 1863 Joseph H. Jenkins /GLO set a wood post as original section corner and made the above ties, all are now obliterated.

(f)(g)(h) Description of monument found at this corner and if it was accepted, state all evidence (material, testimonial, occupational, plats, records, other monuments) used as a basis for establishing location. If reestablished through last corner proportionate methods, indicate all monuments, distances and directions used to establish. Indicate type of monument and signpost found or set.

- In 1963 V. Main stated ¼ stake between 22 and 23 in center line of Town Rd and USH 51
- In 1959 Owens Illinois indicates corner in road.
- In 1970 D.O.T. indicates corner is 0.95' West of centerline of Highway 51 and set the following Reference monuments: N 41°E, 126.28'; N 41°E, 145.96'; S 41°W, 145.55'.
- J. Rein recovered iron bar in Highway.
- In 1987 Michael J. Romportal RLS (S-1624) found an iron bar in Highway 51 and the D.O.T. Reference marks. He set an additional Reference mark a nail in a 12" J. Pine, S 44°08'E, 128.70'. As located on tie sheet #P-17 (3706222000).
- In summer of 2008 the corner was obliterated due to Highway construction. In Nov. 2008 I (Allen P. Oleink RLS (S-2619) WI D.O.T.) reset a survey nail flush with highway pavement based on record distances from existing ties. The southwest R.M. was found crushed. I set two additional R.M.s: a ½" by 24" rebar with alum. cap S 46°24'22"W, 52.50': the same N 51°49'11"W, 56.34'.

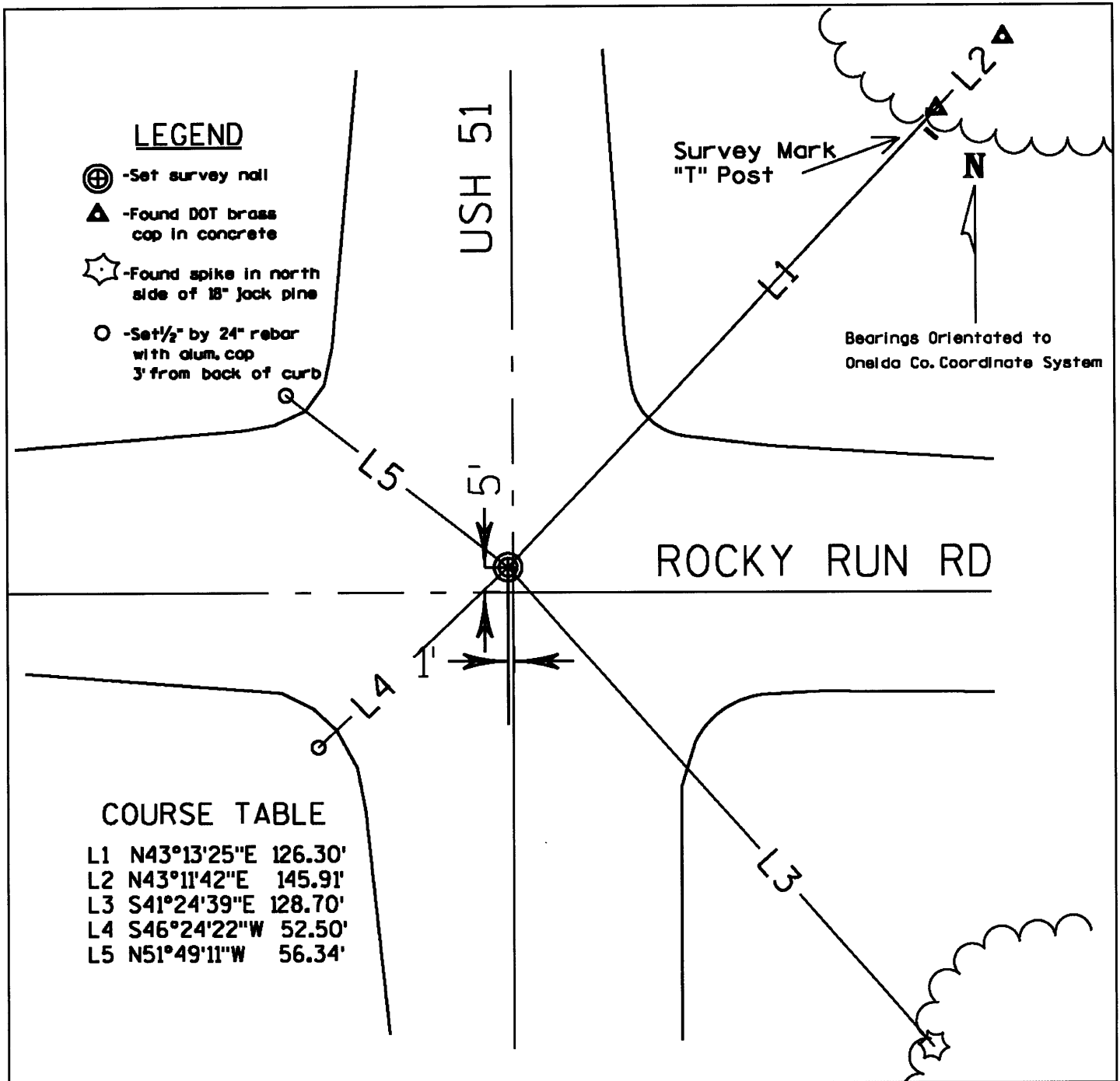
REGISTER OF DEEDS OFFICE
 ONEIDA COUNTY, WIS.

FILED
 FEB 19 2009

At _____ O'Clock _____ M
THOMAS H. LEIGHTON
 REGISTER OF DEEDS

3706 22 20 00

(c)(d)(e) Plan view of corner with ties to at least 4 witnesses. If in disagreement with previously established corner, show the distance between the two corners and also indicate the tie to the disputed corner.



(i) I, Allen P Oleinik, Registered Land Surveyor No 2619, hereby Certify that the corner location on this record was referenced by me And that this U.S. Public Land Survey Monument Record is correct and complete to the best of my knowledge and belief.

Allen P. Oleinik 2-17-09
 Signature Date



Index No. P-17

370622 2000

22 SECTION 37 TOWN 06E RANGE

ONEIDA COUNTY

COUNTY CORNER NO: P-17

ROMPORTOL ID: 43706222000

PUBLIC LAND SURVEY MONUMENT RECORD

TYPE OF MONUMENT: BERNTSEN SNM1 SURVEY NAIL
WISCRS ONEIDA COUNTY, NAD 83 (2011)

N. 180629.776

E. 186570.929

ELEVATION- DATUM

FIELD WORK DATE: 09-29-2021

BASIS FOR MONUMENT LOCATION

1883 - V. MAIN STATED 1/4 STAKE BETWEEN SECTION 22 AND 23 IN CENTERLINE OF TOWN ROAD AND USH 51.

1959 - OWENS ILLINOIS INDICATES CORNER IN ROAD.

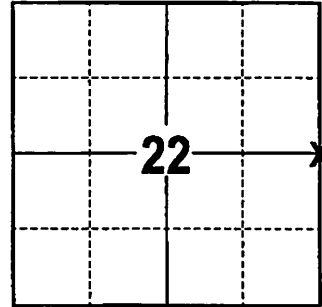
1970 - WISDOT INDICATES CORNER 0.95' WEST OF USH 51 CENTERLINE AND SETS 3 TIES.

J. REIN (PLS 1234) RECOVERED IRON BAR IN HIGHWAY

1987 - MICHAEL J. ROMPORTAL (PLS 1624) FOUND IRON BAR IN HIGHWAY AND 3 WISDOT TIES AND SET 1 NEW WITNESS TREE.

2008 - ALLEN P. OLEINK (PLS 2619) CORNER WAS OBLITERATED DUE TO ROAD CONSTRUCTION AND RE SET A SURVEY NAIL FROM THE EXISTING TIES AND WITNESS (SW TIE WAS DISTURBED). SET OUT 2 NEW TIES AND MEASURED TO THE EXISTING TIES AND WITNESS.

2021 - PRIOR TO A WISDOT PAVING PROJECT I FOUND A SURVEY NAIL IN THE ROAD SURFACE AND 4 EXISTING TIES. THE SURVEY NAIL AGREES WITH ALL THE TIES. ACCEPTED THE SURVEY NAIL AS THE CORNER LOCATION AND SET 3 NEW TIES AND MEASURED TO THE EXISTING. RE-SET A SURVEY NAIL AFTER CONSTRUCTION WAS COMPLETED.



LOCATION
(INDICATE CORNER BY "X")

SEAL:



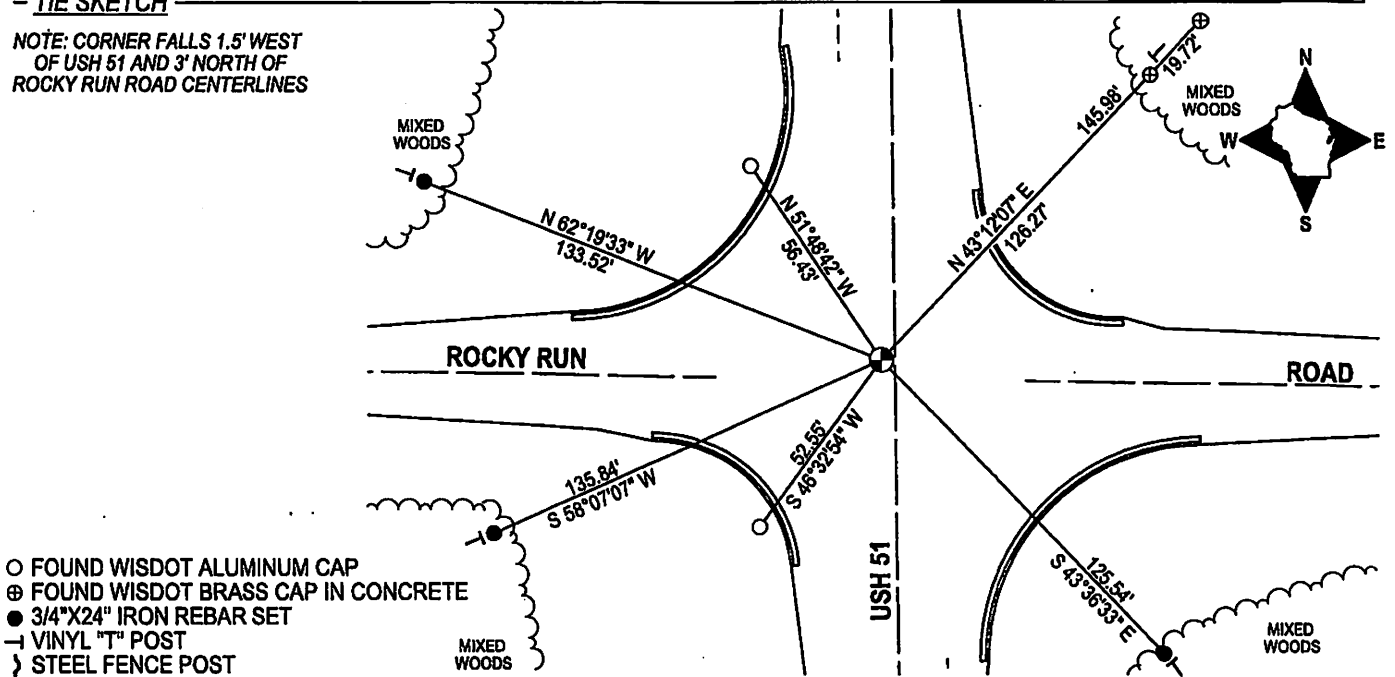
DATA SHOWN HERE ON THIS TIE SHEET IS CORRECT AND COMPLETE TO THE BEST OF MY KNOWLEDGE AND BELIEF.

PROFESSIONAL LAND SURVEYOR

DATE 12/10/2021

- TIE SKETCH

NOTE: CORNER FALLS 1.5' WEST OF USH 51 AND 3' NORTH OF ROCKY RUN ROAD CENTERLINES



- FOUND WISDOT ALUMINUM CAP
- ⊗ FOUND WISDOT BRASS CAP IN CONCRETE
- 3/4"x24" IRON REBAR SET
- VINYL "T" POST
- } STEEL FENCE POST

REGISTER OF DEEDS OFFICE
ONEIDA COUNTY
FILED

DEC 21 2021

KYLE J. FRANSON
REGISTER OF DEEDS