

U.S. PUBLIC LAND SURVEY MONUMENT RECORD

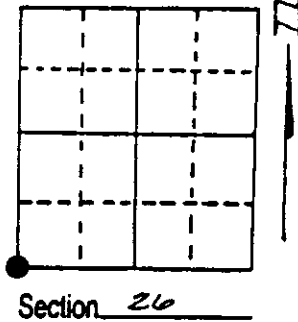
Note: This form is intended and designed to fulfill all requirements of Wisconsin Administrative Code, Chapter A-E 7.08 U.S. Public Land Survey Monument Record (3) (a) (b) (c) (d) (e) (f) (g) (h) (i). An additional sheet may be added if necessary to conform with said requirements.

(a) Corner location: Township 37 North

Range 6 East/West

Town/City/Village Cassian

County Oneida



(b) (f) (g) (h) Description of monument found at this corner and if it was accepted, state all evidence (material, testimonial, occupational, plats, records, other monuments) used as a basis for accepting. If not accepted or if nothing was found, state evidence used as basis for establishing location. If reestablished through lost corner proportionate methods, indicate all monuments, distances and directions used to establish. Indicate type of monument found or set and sign post.

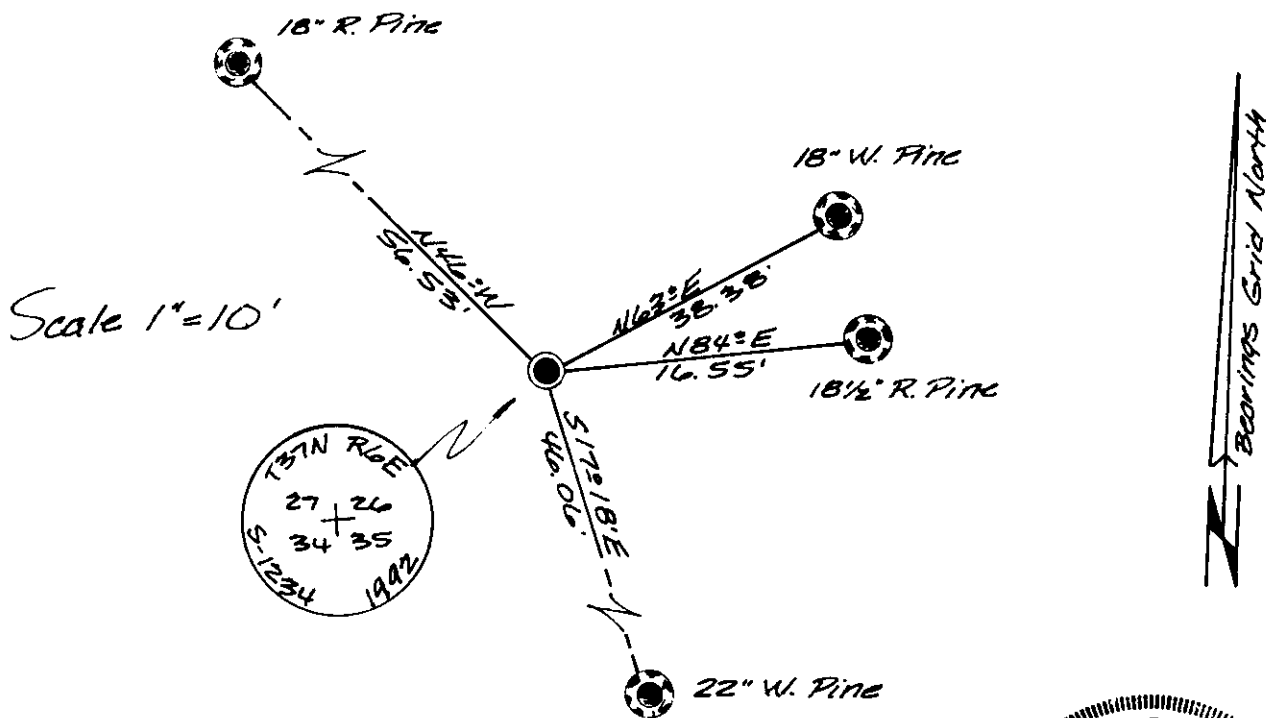
June 28th, 1863 - Joseph H. Jenkins, Deputy Surveyor, set post to sections 26, 27, 34, & 35 witnessed by two bearing trees: a 8" W. Pine N12°W, 33 links and a 10" W. Pine N11°E, 40 links.

Nov. 1st 1978 - John H. Fisher, RLS, recovered an old fence corner post with O&I tag, old fence lines East and South, blazed line west. Replaced post with a 2" dia. iron pipe. Made new post and reference ties: a 10" W. Birch N58°E, 8.3' and a 14" N. Pine N84°E, 16.0'.

Feb. 1st, 1989 - Jefferey W. Austin, RLS, accepted section corner position in re-establishing the 1/4 between Sections 34 & 35.

July 29th, 1992 - James D. Rein, Registered Land Surveyor, recovered a 2" dia. iron pipe, at intersection of old fence line, witnessed by a 18 1/2" R. Pine N84°46'E, 16.55. The position checked with the distances and bearings from the recovered 1/16 corner and the original S 1/4 corner of Section 26. Replaced the 2" dia. iron pipe with a capped 2" dia. x 30 long aluminum monument. Set plastic post 1 foot Northeast of corner and made reference ties as shown in plan view.

(c) (d) (e) Plan view of corner with ties to at least 4 witness monuments. If in disagreement with previously established corner, show the distances between the two corners and also indicate the ties to the disputed corner.



(i) I, James D. Rein, RLS No. 1234
 (type or print name) certify that the corner location on this record was determined by me or under my direction and control and that this U.S. Public Land Survey Monument Record is correct and complete to the best of my knowledge and belief.

James D. Rein Signature July 16th, 1992 Date



Stamp: 3706270000

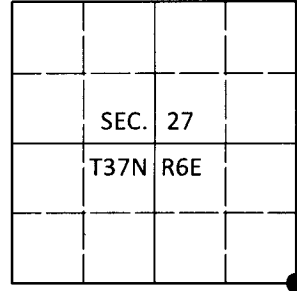
Index No. V-17

U.S. PUBLIC LAND SURVEY MONUMENT RECORD

Note: This form is intended and designed to fulfill all requirements of Wisconsin Administrative Code, Chapter A-E 7.08 U.S. Public Land Survey Monument Record (3)(a-i).

(a) CORNER LOCATION
 Cor. of Secs. 26, 27, 34 & 35
 Township 37 North
 Range 6 East of the 4th P.M.
 Town of Cassian
 County of Oneida

WISCRS - Oneida County
 N: 172,763.05 USft
 E: 186,672.96 USft
 Datum: NAD 83(2011)
 GNSS Method: RTN - Direct
 GNSS Control: WISCORS VRS



(b) HISTORY OF ORIGINAL CORNER ESTABLISHMENT

Original Surveyor:

Original Accessories:

Date of Survey Commenced:
 Completed:

See previous monument record(s)

(b)(f)(g)(h) Description of monument found at this corner and if it was accepted, state all evidence (material, testimonial, occupational, plats, records, other monuments) used as a basis for accepting. If not accepted or if nothing was found, state evidence used as basis for establishing location. If re-established through lost corner proportionate methods, indicate all monuments, distances and directions used to establish. Indicate type of monument and sign post found or set.

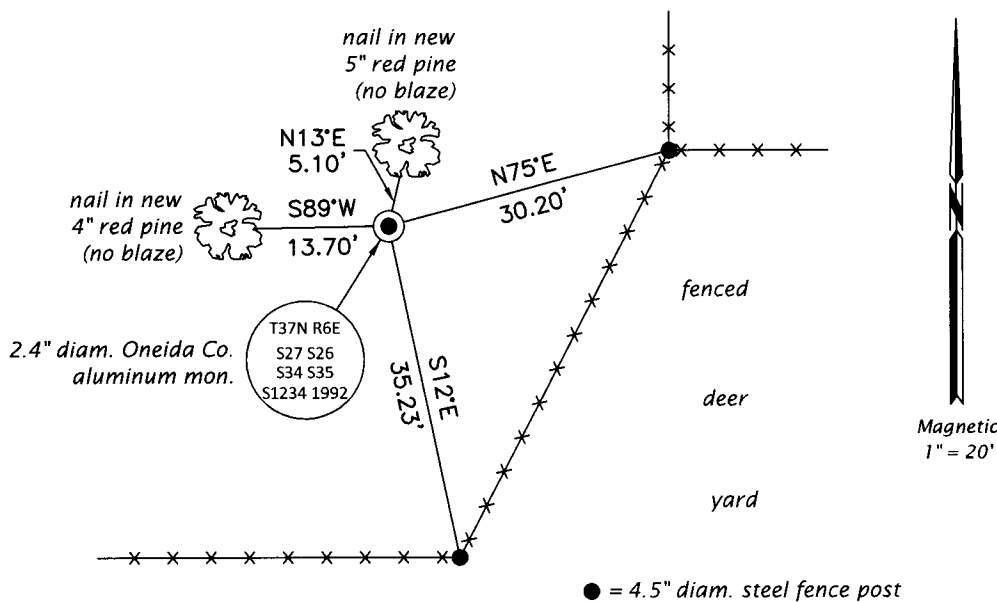
This is a perpetuation of the following monument record(s) that comprise a complete history of the corner:

July 16, 1992: USPLS Monument Record No. 3706270000 by James D. Rein, PLS

Oct. 9, 2019: I found and accepted the record monument, a 2.4" diam. aluminum pipe with a 3.3" diam. Oneida Co. aluminum cap projecting 3" above the ground surface. The record bearing tree at N46°W is a stump, the other trees are gone. I found or established accessories as shown below. I found a white vinyl sign post bearing Northwest, 0.5 ft.

The coordinate value shown has been verified by at least one of the following methods: 1) comparison to a previously GPS determined published value; 2) the value is the average of two or more GPS observations at a markedly different time; 3) one or more distances were measured back to the GPS observed corner from temporary GPS observed offset locations.

(c)(d)(e) Plan view of corner with ties to at least 4 witness monuments. If in disagreement with previously established corner, show the distances between the two corners and also indicate the ties to the disputed.



REGISTER OF DEEDS OFFICE
 ONEIDA COUNTY
 FILED

DEC 23 2019

KYLE J. FRANSON
 REGISTER OF DEEDS

(i) I, Jeffrey W. Austin, Professional Land Surveyor No. S-1885, hereby certify that the corner location on this record was determined by me or under my direction and control and that this U.S. Public Land Survey Monument Record is correct and complete to the best of my knowledge and belief.

[Handwritten Signature]
 Signature

5 DEC 2019
 Date

3706270000 (INDEX NO. V-17)