

CERTIFIED LAND CORNER RESTORATION

State of Wisconsin }
County of Oneida } ss.

I John H. Fisher, do hereby certify that on the 25 day of May, 19 81, I found evidence of the north one quarter corner of Section 34 Township 37N Range 6E, Fourth Principal Meridian, as described hereon; and that from this evidence I established a new monument and accessories as described hereon to perpetuate the original location of this corner:

Description of original monument and accessories and subsequent restorations:

The original Gov't. Survey was performed by Joseph H. Jenkins, Deputy Surveyor in June 29, 1863.

Set wood post
10' Blk. Pine N6°E, 50 links
10" Blk. Pine N61°E, 1.00 Links

Description of corner evidence found:

Old square post (down) found hole
0-1 metal tag in 8" Jack Pine (dead) S55°E, 3.4 feet

Description of monument and accessories I established to perpetuate the location of this corner:

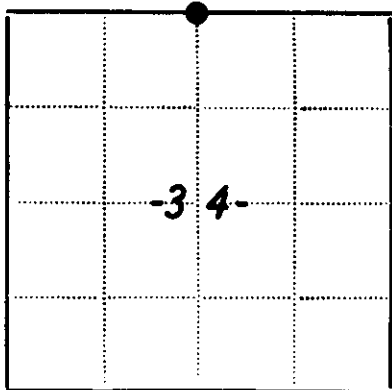
Set Oneida County 2" aluminium pipe with stamped aluminium cap.

Set Witness:

6" Spruce S38°W, 95.7 feet
7" White Birch N6°E, 53.7 feet

Found in Place

0-1 metal tag in 8" Jack Pine (dead) S55°E, 3.4 feet



● - Corner monument restored
□ -

Resident witnesses _____

Dated at Minocqua Wisconsin, this 16th day of June 19 81.

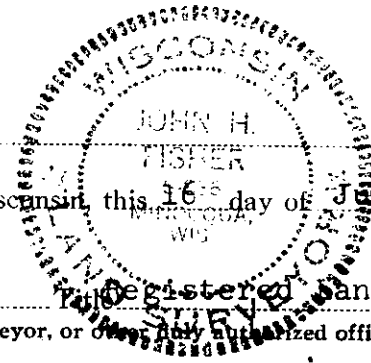
Signature *John H. Fisher* Registered Land Surveyor
(County Surveyor, Registered Land Surveyor, or other duly authorized official)

Surveyors Registration No. S-836

Office of REGISTER OF DEEDS County of Oneida

I hereby certify that the within instrument was filed in this office for record on the 17th day of September 19 82, and was filed in Book No. _____ Page No. _____ of County Records.

Signature *Louis Verge Kuehn* Title REGISTER OF DEEDS



V-15

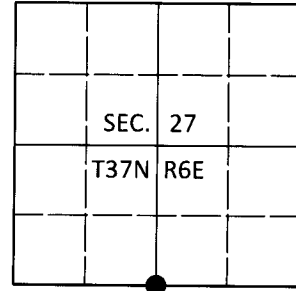
Township _____, Range _____, Section _____, Index No. _____, Page No. _____

U.S. PUBLIC LAND SURVEY MONUMENT RECORD

Note: This form is intended and designed to fulfill all requirements of Wisconsin Administrative Code, Chapter A-E 7.08 U.S. Public Land Survey Monument Record (3)(a-i).

(a) CORNER LOCATION
 1/4 Cor. of Secs. 27 & 34
 Township 37 North
 Range 6 East of the 4th P.M.
 Town of Cassian
 County of Oneida

WISCRS - Oneida County
 N: 172,690.71 USft
 E: 184,067.65 USft
 Datum: NAD 83(2011)
 GNSS Method: RTN - Direct
 GNSS Control: WISCORS VRS



(b) HISTORY OF ORIGINAL CORNER ESTABLISHMENT

Original Surveyor: _____ Original Accessories: _____
 Date of Survey Commenced: _____ See previous monument record(s)
 Completed: _____

(b)(f)(g)(h) Description of monument found at this corner and if it was accepted, state all evidence (material, testimonial, occupational, plats, records, other monuments) used as a basis for accepting. If not accepted or if nothing was found, state evidence used as basis for establishing location. If re-established through lost corner proportionate methods, indicate all monuments, distances and directions used to establish. Indicate type of monument and sign post found or set.

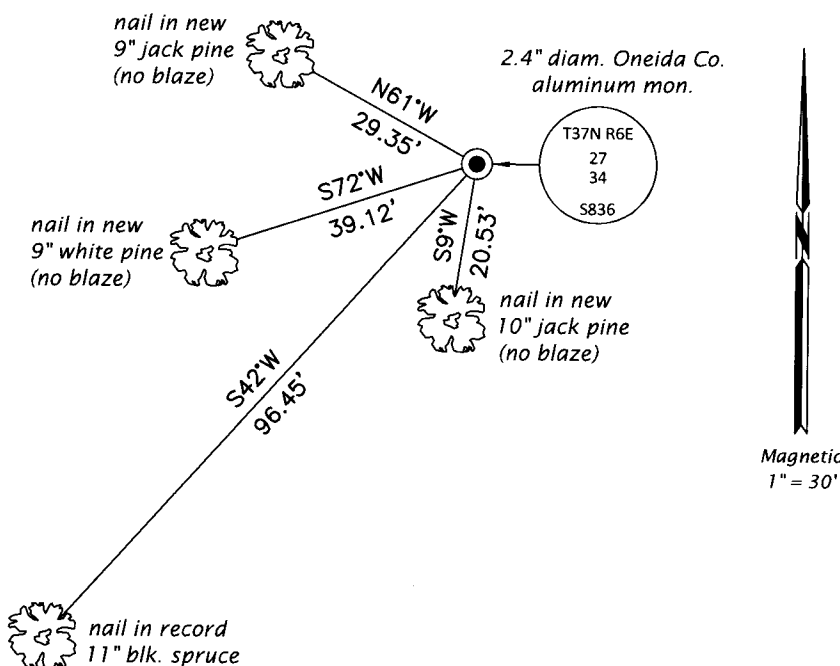
This is a perpetuation of the following monument record(s) that comprise a complete history of the corner:

June 16, 1981: Certified Land Corner Restoration No. 3706270020 by John H. Fisher, PLS

Aug. 7, 2019: I found and accepted the record monument, a 2.4" diam. aluminum pipe with a 3.3" diam. Oneida Co. aluminum cap projecting 8" above the ground surface. The record birch bearing tree is gone. I found or established accessories as shown below. I set a white vinyl sign post bearing Southeast, 0.8 ft.

The coordinate value shown has been verified by at least one of the following methods: 1) comparison to a previously GPS determined published value; 2) the value is the average of two or more GPS observations at a markedly different time; 3) one or more distances were measured back to the GPS observed corner from temporary GPS observed offset locations.

(c)(d)(e) Plan view of corner with ties to at least 4 witness monuments. If in disagreement with previously established corner, show the distances between the two corners and also indicate the ties to the disputed.



REGISTER OF DEEDS OFFICE
 ONEIDA COUNTY
 FILED

JAN 03 2020

KYLE J. FRANSON
 REGISTER OF DEEDS

(i) I, Jeffrey W. Austin, Professional Land Surveyor No. S-1885, hereby certify that the corner location on this record was determined by me or under my direction and control and that this U.S. Public Land Survey Monument Record is correct and complete to the best of my knowledge and belief.

[Handwritten Signature]
 Signature

DEC. 23, 2019
 Date