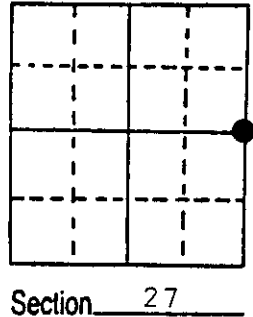


# U.S. PUBLIC LAND SURVEY MONUMENT RECORD

Note: This form is intended and designed to fulfill all requirements of Wisconsin Administrative Code, Chapter A-E 5.02, U.S. Public Land Survey Monument Record (3) (a) (b) (c) (d) (e) (f) (g) (h) (i). An additional sheet may be added if necessary to conform with said requirements.

(a) Corner location: Township 37 North  
 Range 6 East/West  
 Town/City/Village Cassian  
 County Oneida



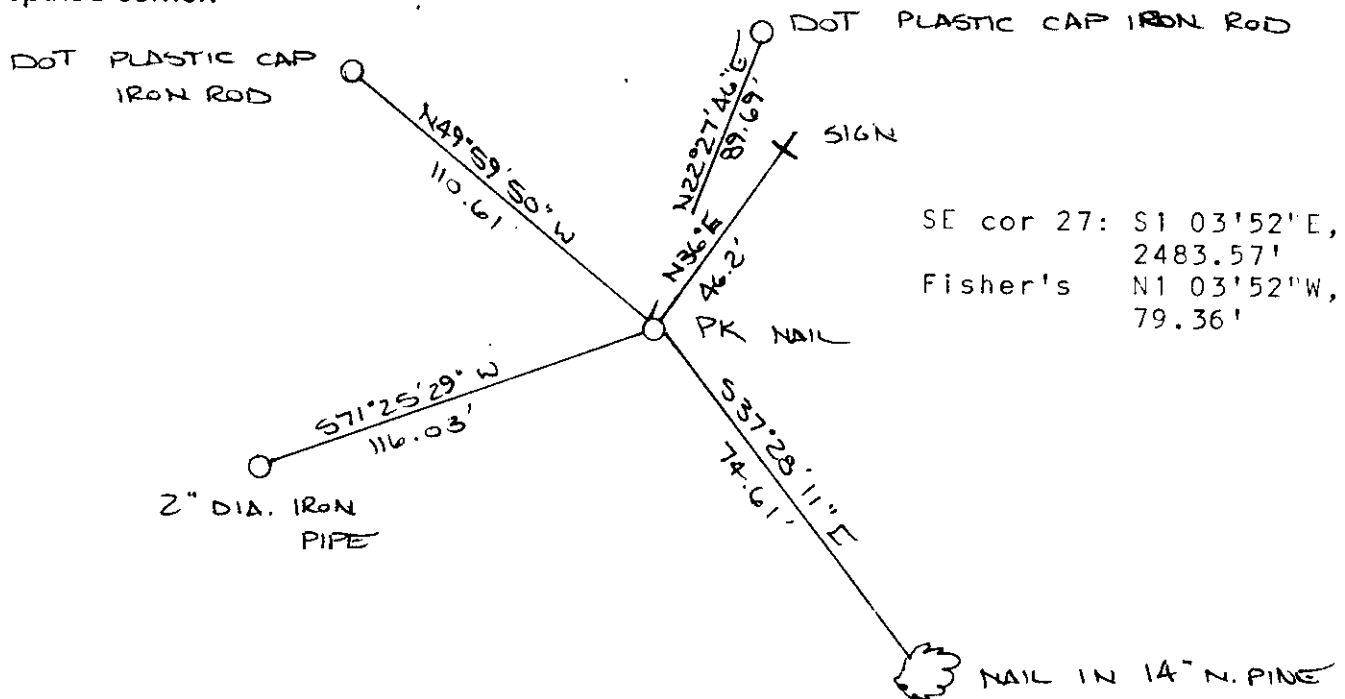
(b) (f) (g) (h) Description of monument found at this corner and if it was accepted, state all evidence (material, testimonial, occupational, plats, records, other monuments) used as a basis for accepting. If not accepted or if nothing was found, state evidence used as basis for establishing location. If reestablished through lost corner proportionate methods, indicate all monuments, distances and directions used to establish.

The original Government Survey was performed by Joseph H. Jenkins in June & July, 1863. A wood post was set: Birch 8 N73W, 4 lks.; W. Pine 20 S78E, 19 lks.

John H. Fisher set this corner proportionate measure on a survey map dated February 6, 1979.

Since this time Town Road records have become available indicating the centerline of Fernwood Road was established on the East - West one quarter line of section 26. I therefore established the corner at the intersection of the section line and the centerline of said road. A P.K. nail was set. I established the following witnesses: DOT plastic capped iron rod N49°59'50"W, 110.61'; DOT plastic capped iron rod N22°27'46"E, 89.69'; 2" dia. iron pipe S71°25'29"W, 116.03'; nail in N. Pine 14" S37°28'11"E, 74.61'; plastic survey marker sign N36E, 46.2'.

(c) (d) (e) Plan view of corner with ties to at least 4 witness monuments. If in disagreement with previously established corner, show the distances between the two corners and also indicate the ties to the disputed corner.



SE cor 27: S1 03'52"E, 2483.57'  
 Fisher's N1 03'52"W, 79.36'

(i) I, JEFFREY W. AUSTIN S-1885  
 (type or print name) certify that the corner location on this record was determined by me or under my direction and control and that this U.S. Public Land Survey Monument Record is correct and complete to the best of my knowledge and belief.

*[Handwritten Signature]*  
 Signature

FEBRUARY 1, 1989  
 Date



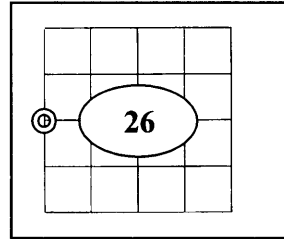
Index No. I-17

3706272000

## U.S. PUBLIC LAND SURVEY MONUMENT RECORD

Note: This form is intended and designed to fulfill all requirements of Wisconsin Administrative Code Chapter A-E 7.08 (3) (a-i).

(a) Corner: West 1/4  
 Section: 26  
 Township: 37 N.  
 Range: 06 E.  
 Town: Cassian  
 County: Oneida



(b) History of Original Corner

Original Surveyor	Joseph H. Jenkins	Original B.T.'s	
Date of Survey	1863	8" Birch	N73°W 4 links
		20" W. Pine	S78°E 19 links

- In 1863 Joseph H. Jenkins /GLO set a wood post as original section corner and made the above ties, all are now obliterated.

(f)(g)(h) Description of monument found at this corner and if it was accepted, state all evidence (material, testimonial, occupational, plats, records, other monuments) used as a basis for establishing location. If reestablished through last corner proportionate methods, indicate all monuments, distances and directions used to establish. Indicate type of monument and signpost found or set.

- On Feb. 6<sup>th</sup> 1979 John H. Fisher set this corner proportionate measure on a survey map.
- On Feb. 1<sup>st</sup> 1989 Jeffrey W. Austin RLS (S-1885) established the corner at the intersection of the section line and the centerline of Fern wood Rd. He set a P.K. nail at the corner location. He established the following witnesses: DOT plastic capped iron rod N 22°27'46"E, 89.69'; 2" dia. Iron pipe S 71°25'29" W, 116.03', nail in a 14" N. pine S 37°28'11"E, 74.61'; DOT plastic capped iron rod N 49°59'50"W, 110.61'; plastic survey marker sign N 36°E, 46.2'. As located on tie sheet #T-17 (3706272000).
- In summer of 2008 the corner was obliterated due to Highway construction. In Nov. 2008 I (Allen P. Oleink RLS (S-2619) WI D.O.T.) reset a survey nail flush with highway pavement. I reset the corner with RTK GPS calibrated to the record coordinates of the surrounding corners. Then verified with the one remaining S.W. Witness mark. I set a survey nail flush with the pavement at the corner and the following ties: a 1/2" by 24" rebar with alum. cap N 40°24'03"E, 42.03'; the same S 48°14'54"E, 55.27'; the same N 53°53'43"W, 75.16'.

REGISTER OF DEEDS OFFICE  
 ONEIDA COUNTY, WIS.

**FILED**  
 FEB 19 2009

At \_\_\_\_\_ O'Clock \_\_\_\_\_ M  
**THOMAS H. LEIGHTON**  
 REGISTER OF DEEDS

370627 2000



27 SECTION 37 TOWN 06E RANGE

# ONEIDA COUNTY

COUNTY CORNER NO: T-17

ROMPORTOL ID: 43708272000

## PUBLIC LAND SURVEY MONUMENT RECORD

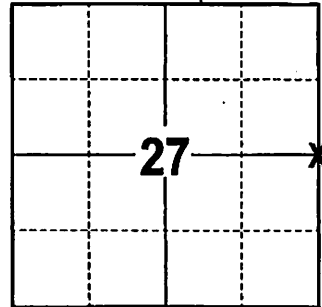
TYPE OF MONUMENT: BERNTSEN SNM1 SURVEY NAIL  
WISCRS ONEIDA COUNTY, NAD 83 (2011)

N. 175246.910

E. 186649.249

ELEVATION- --- DATUM ---

FIELD WORK DATE: 09-29-2021



LOCATION  
(INDICATE CORNER BY "X")

SEAL:



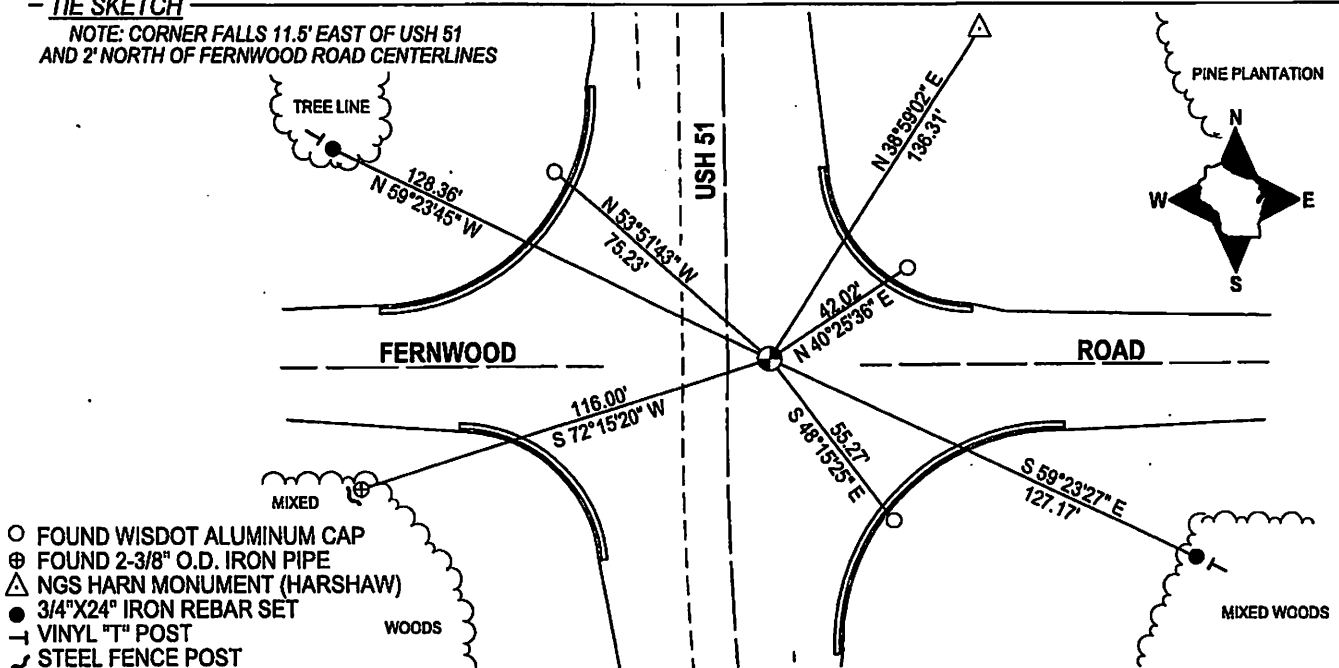
DATA SHOWN HERE ON THIS TIE SHEET IS CORRECT AND COMPLETE TO THE BEST OF MY KNOWLEDGE AND BELIEF.

PROFESSIONAL LAND SURVEYOR

DATE 12/10/2021

### - TIE SKETCH -

NOTE: CORNER FALLS 11.5' EAST OF USH 51 AND 2' NORTH OF FERNWOOD ROAD CENTERLINES



REGISTER OF DEEDS OFFICE  
ONEIDA COUNTY  
FILED

DEC 21 2021

KYLE J. FRANSON  
REGISTER OF DEEDS