

# U.S. PUBLIC LAND SURVEY MONUMENT RECORD

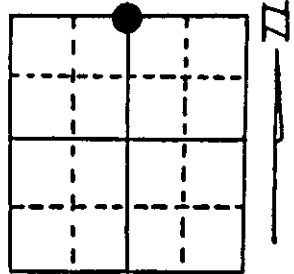
**Note:** This form is intended and designed to fulfill all requirements of Wisconsin Administrative Code, Chapter A-E 7.08 U.S. Public Land Survey Monument Record (3) (a) (b) (c) (d) (e) (f) (g) (h) (i). An additional sheet may be added if necessary to conform with said requirements.

(a) Corner location: Township 37 North

Range 6 East/West

Town/City/Village Cassian

County Oneida



Section 32

(b) (f) (g) (h) Description of monument found at this corner and if it was accepted, state all evidence (material, testimonial, occupational, plats, records, other monuments) used as a basis for accepting. If not accepted or if nothing was found, state evidence used as basis for establishing location. If reestablished through lost corner proportionate methods, indicate all monuments, distances and directions used to establish. Indicate type of monument found or set and sign post.

6/3/1863 - Joseph H. Jenkins established this corner. He set a wood post with one BT - no others near: 8" Black Pine, S39°E, 63 Links (41.58')

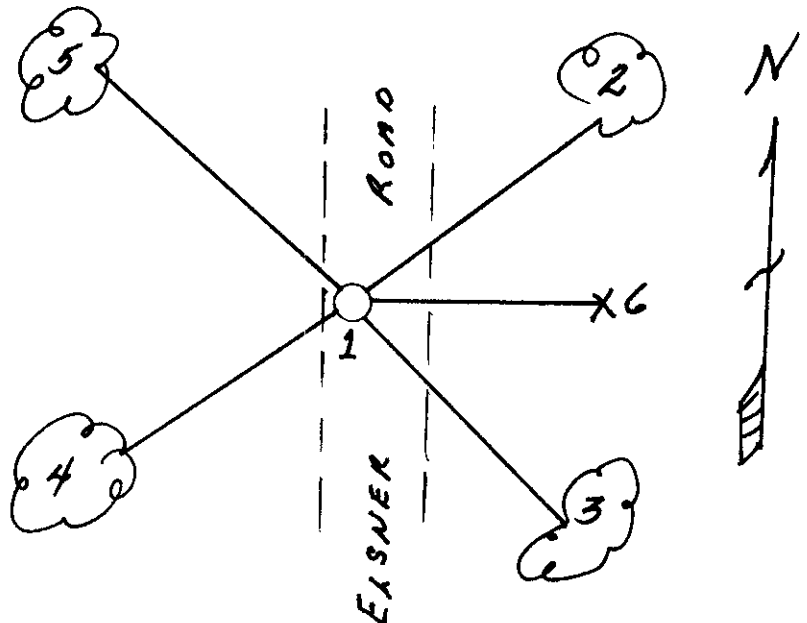
9/1994 - Alvin Barden pointed this corner out to me. He stated this iron pipe has been here since the 1920's at which time his mother's (Mrs. Lloyd Barden) folks purchased this nearby land.

10/5/1994 - Milo E. Stefan dug out the iron pipe (a 1 1/4" well point) and replaced it with a 2" x 36" aluminum monument, 8" below road surface (gravel), made new BTs and set plastic sign post.

(c) (d) (e) Plan view of corner with ties to at least 4 witness monuments. If in disagreement with previously established corner, show the distances between the two corners and also indicate the ties to the disputed corner.

- 1) 2" x 36" Aluminum Monument.
- 2) 6" Red Pine, N64°E, 46.45'.
- 3) 6" Red Pine, S50°E, 52.84'.
- 4) 6" Red Pine, S54°W, 50.10'.
- 5) 8" Jack Pine, N53°W, 81.64'.
- 6) Plastic Sign Post, East, 30.00'

Distances to nail in side of BTs.  
Stump blaze scribed "BT"



(i) I, Milo E. Stefan

(type or print name) certify that the corner location on this record was determined by me or under my direction and control and that this U.S. Public Land Survey Monument Record is correct and complete to the best of my knowledge and belief.

Milo E. Stefan  
Signature

10/9/94  
Date



Index No. V-7

Stamp 3706290020

# U.S. PUBLIC LAND SURVEY MONUMENT RECORD

NOTE: This form is intended and designed to fulfill all requirements of Wisconsin Administrative Code, Chapter A-E 7.08 U.S. Public Land Survey Monument Record. An additional sheet may be added if necessary to conform with said requirements.

**CORNER LOCATION**  
 1/4 Corner common to Sections 29 and 32  
 Township 37 North, Range 6 East of the 4th P.M.  
 Town of Cassian, Oneida County, Wisconsin

ONEIDA COUNTY ID NO:  
 3706290020

6	5	4	3	2	1
7	8	9	10	11	12
18	17	16	15	14	13
19	20	21	22	23	24
30	29	28	27	26	25
31	32	33	34	35	36

T37N - R6E

**HISTORY OF ORIGINAL CORNER ESTABLISHMENT**

ORIGINAL SURVEYOR: Joseph H. Jenkins  
 DATE OF SURVEY: Commenced June 1863, Finished July 1863  
 ORIGINAL ACCESSORIES: 8" Black Pine, S35°E, 63 links  
 No Other Near

DESCRIPTION OF MONUMENT FOUND AT THIS CORNER AND IF IT WAS ACCEPTED, STATE ALL EVIDENCE (MATERIAL, TESTIMONIAL, OCCUPATIONAL, PLATS, RECORDS, OTHER MONUMENTS) USED AS A BASIS FOR ACCEPTING. IF NOT ACCEPTED OR IF NOTHING WAS FOUND, STATE EVIDENCE USED AS BASIS FOR ESTABLISHING LOCATION. IF RE-ESTABLISHED THROUGH LOST CORNER PROPORTIONATE METHODS, INDICATE ALL MONUMENTS, DISTANCES AND DIRECTIONS USED TO ESTABLISH. INDICATE TYPE OF MONUMENT AND SIGN POST FOUND OR SET.

9/1994 - Alvin Barden pointed the corner out to Milo E. Stefan. He stated to Milo E. Stefan that the iron pipe had been there since the 1920's at the time his mother's family purchased nearby land.

10/5/1994 - Milo E. Stefan dug out the iron pipe (a 1 1/4" Well Point) and replaced with a 2" X 36" Aluminum Monument 8" below the gravel surface of the road and set bearing objects.

7/20/2020 - Visited corner location and found Oneida County Monument ±8" below the gravel surface of road as described above. I found one tie to the southwest that corresponded with previous Tie Sheet by Milo E. Stefan. I established three new ties as shown below.

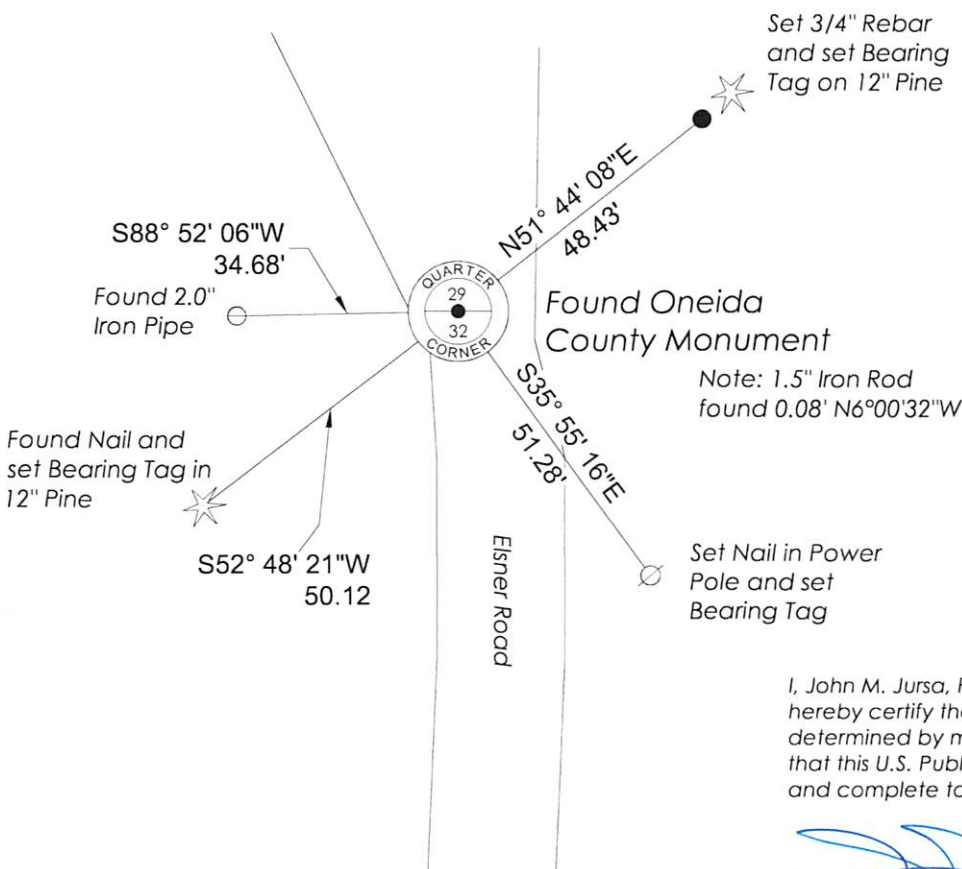
REGISTER OF DEEDS OFFICE  
 ONEIDA COUNTY  
 FILED

JAN 13 2021

KYLE J. FRANSON  
 REGISTER OF DEEDS

PLAN VIEW OF CORNER WITH TIES TO AT LEAST 4 WITNESS MONUMENTS. IF IN DISAGREEMENT WITH PREVIOUSLY ESTABLISHED CORNER, SHOW THE DISTANCES BETWEEN THE TWO CORNERS AND ALSO INDICATE THE TIES TO THE DISPUTED.

SCALE: 1" = 30'  
 Bearings Oneida  
 County Grid



I, John M. Jursa, Professional Land Surveyor No. S-3201, hereby certify that the corner location on this record was determined by me or under my direction and control and that this U.S. Public Land Survey Monument Record is correct and complete to the best of my knowledge and belief.

John M. Jursa, PLS No. S-3201  
 STEIGERWALDT LAND SURVEYING, LLC