

CERTIFIED LAND CORNER RESTORATION

State of Wisconsin }  
County of Oneida } ss.

I, Gerald B. Inman, do hereby certify that on the 31st day of March, 1980, we found evidence of the North one-quarter corner of Section 6, Township 36N, Range 6E, Fourth Principal Meridian, as described hereon; and that from this evidence I established ~~a new monument and~~ accessories as described hereon to perpetuate the original location of this corner:

Description of original monument and accessories and subsequent restorations:

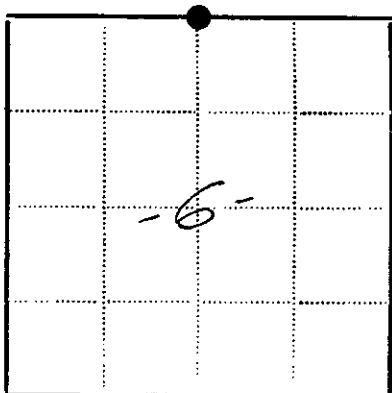
wood post  
12" W. Pine S22°E, 65 lks.  
7" Y. Pine N11"E, 45 lks.

Description of corner evidence found:

Bearing Trees  
22" N. Pine S56°E, 44.3 feet to face of blaze  
9" J. Pine S30°W, 36.9 feet

Description of ~~monument and~~ accessories <sup>wz</sup> established to perpetuate the location of this corner:

Set 2" iron pipe for one-quarter corner  
also measured to one more b.t.  
10" J. Pine S62°W, 13.5 feet



● - Corner monument restored  
□ -

~~Witness~~ witnesses Robert W. Conner, Jr.

Dated at Minocqua Wisconsin, this 31st day of March 1980.

Signature *Gerald B. Inman* Title Registered Land Surveyor  
(County Surveyor, Registered Land Surveyor, or other duly authorized official)

Surveyors Registration No. S-891

Office of Register of Deeds County of Oneida

I hereby certify that the within instrument was filed in this office for record on the 11 day of June 1980, and was filed in Book No. \_\_\_\_\_ Page No. \_\_\_\_\_ of County Records.

Signature *Doris Vorage Pugh* Title Register of Deeds  
*Cynthia A. Pugh, Deputy*

Township 36N, Range 6E, Section 6, Index No. \_\_\_\_\_, Page No. \_\_\_\_\_

Stock No. 26273

Stock No. 26272

State of Wisconsin }  
County of Oneida } ss.

I, John H. Fisher, do hereby  
certify that on the 25th day  
of July, 1984, I found  
evidence of the North one quarter  
corner of Section 6  
Township 36, North, Range  
6 East, Fourth Principal Meridian,  
as described hereon; and that from this evidence  
I established a new monument and accessories  
as described hereon to perpetuate the original  
location of this corner.

Resident witnesses:

None

**CERTIFIED LAND CORNER RESTORATION**  
**U.S. PUBLIC LAND SURVEY MONUMENT RECORD**

Index No. A-3

History of original corner establishment:

The original Government survey was performed by Alfred Willard, Deputy Surveyor  
August, 1860

Set wood posts  
White Pine 18" N35°E 8 links  
White Pine 18" N69°W 43 links

Description of corner evidence found:

2" Iron pine and Cedar post 5" x 5"  
22" Norway Pine S56°E 45.07 feet  
10" Jack Pine S30°W 37.15 feet

Description of monument and accessories I established to perpetuate the original location of this corner.

Corner in good condition  
Set nails in old B.T.'s

Norway Pine 22" S56°E 45.07 feet  
Jack Pine 10" S30°W 37.15 feet

Set nail in new B.T.'s.

Norway Pine 8" N77°W 35.05 feet  
White Pine 7" S 8°W 52.40 feet

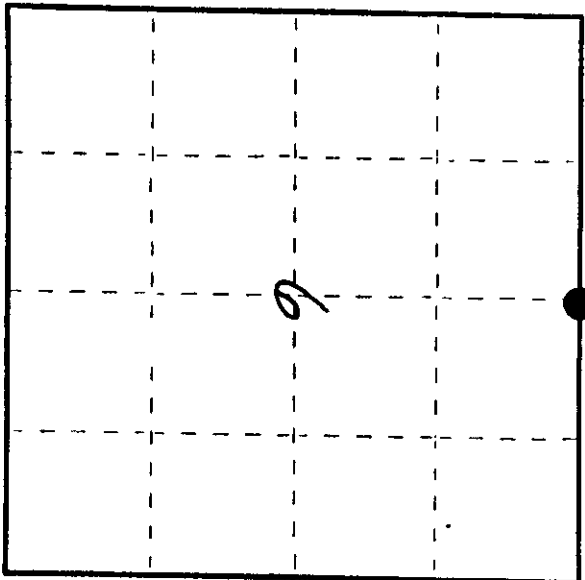
Dated at Minocqua, Wis., this 25<sup>th</sup> day of July, 1984.

Signature John H. Fisher Title Registered Land Surveyor Registration No. S-836  
(County Surveyor, Registered Land Surveyor, or other duly authorized official)

Office of Register of Deeds, County of \_\_\_\_\_, I hereby certify that the within  
instrument was filed in this office for record on the \_\_\_\_\_ day of \_\_\_\_\_, 19\_\_\_\_  
at \_\_\_\_\_ o'clock \_\_\_\_\_ M.

(Register of Deeds)

By \_\_\_\_\_ Deputy



● - Corner monument restored.

0200139013



# U.S. PUBLIC LAND SURVEY MONUMENT RECORD

REGISTER OF DEEDS OFFICE  
ONEIDA COUNTY  
FILED

Note: This form is intended and designed to fulfill all requirements of the Wisconsin Administrative Code, Chapter A-E 7.08 U.S. Public Land Monument Record (3)(a)(b)(c)(d)(e)(f)(g)(h)(i). An additional sheet may be added if necessary to conform with said requirements.

MAR 15 2021

KYLE J. FRANSON  
REGISTER OF DEEDS

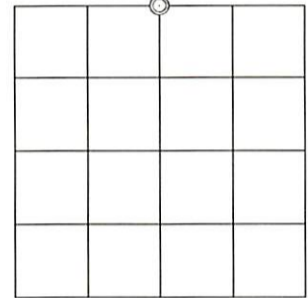
(a) CORNER LOCATION:

North Quarter Corner of Section 6  
Township 36 North  
Range 6 East  
Town of Nokomis  
County of Oneida

North:  
East:  
Datum:  
GNSS Method:  
GNSS Control:

(RECORDING AREA)

SECTION 6



(b) HISTORY OF ORIGINAL CORNER ESTABLISHMENT

Original Surveyor:  
Date of Survey: Commenced  
Completed  
Original B.T.'S

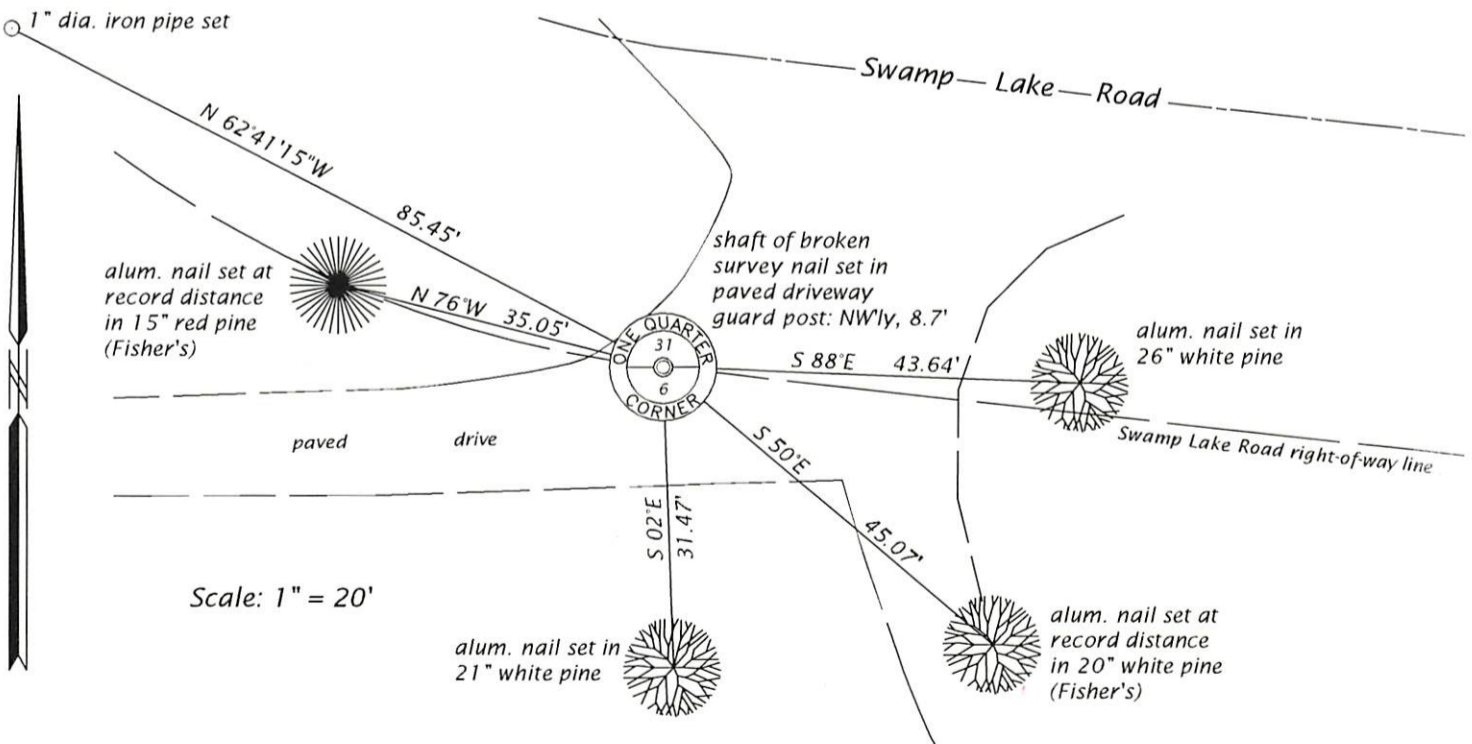
SEE PREVIOUS U.S.P.L.S. MONUMENT  
RECORD DATED AUGUST 20, 1984.

(f)(g)(h) DESCRIPTION OF MONUMENT FOUND AT THIS CORNER AND IF IT WAS ACCEPTED, STATE ALL EVIDENCE (MATERIAL, TESTIMONIAL, OCCUPATIONAL, PLATS, RECORD, OTHER MONUMENTS) USED AS A BASIS FOR ESTABLISHING LOCATION. IF NOT ACCEPTED OR IF NOTHING WAS FOUND, STATE EVIDENCE USED AS BASIS FOR ESTABLISHING LOCATION. IF REESTABLISHED THROUGH LOST CORNER PROPORTIONATE METHODS, INDICATE ALL MONUMENTS, DISTANCES AND DIRECTIONS USED TO ESTABLISH. INDICATE TYPE OF MONUMENT AND SIGN POST FOUND OR SET.

This is a perpetuation of a previous U.S.P.L.S. Monument Record by John H. Fisher, RLS, dated August 20, 1984, and filed in the office of the Oneida County Register of Deeds. A complete history of the corner can be found on the previous monument record. I accept the previous location as a true and faithful perpetuation or reestablishment of the original corner location and further perpetuate it as follows.

January 14, 2021, James D. Rein, P.L.S. No. S-1234, we did not recover the iron pipe Fisher previously found because the corner position is in a paved driveway. We did recover Fisher's northwesterly and southeasterly pine bearing trees. His southwesterly jack pine and southwesterly white pine are now gone. We set a survey nail in the paved driveway based on the recovered bt's and our prior survey control. Due to frost conditions, the head broke off the survey nail. See below for updated references.

(c)(d)(e) PLAN VIEW OF CORNER WITH TIES TO AT LEAST 4 WITNESS MONUMENTS. IF IN DISAGREEMENT WITH PREVIOUSLY ESTABLISHED CORNER, SHOW THE DISTANCE BETWEEN THE TWO CORNERS AND ALSO INDICATE THE TIES TO THE DISPUTED CORNER.



(j) I, JAMES D. REIN, PROFESSIONAL LAND SURVEYOR NO. S-1234 HEREBY CERTIFY THAT THE CORNER LOCATION ON THIS RECORD WAS DETERMINED BY ME OR UNDER MY DIRECTION AND CONTROL AND THAT THIS U.S. PUBLIC LAND SURVEY MONUMENT RECORD IS CORRECT AND COMPLETE TO THE BEST OF MY KNOWLEDGE AND BELIEF.



*James D. Rein*  
SIGNATURE

MARCH 2, 2021  
DATE

INDEX NO. A - 3  
3706310020