

CERTIFIED LAND CORNER RESTORATION

State of Wisconsin }
County of Oneida } ss.

I James M. Marquardt, do hereby certify that on the 12 day of September, 1979, I found evidence of the East one quarter corner of Section 33 Township 37N Range 6E, Fourth Principal Meridian, as described hereon; and that from this evidence I established a new monument and accessories as described hereon to perpetuate the original location of this corner:

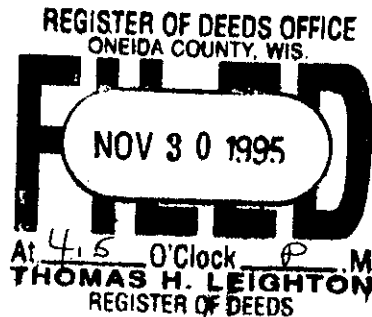
Description of original monument and accessories and subsequent restorations:

The original Gov't. Survey was performed by Jos. H. Jenkins Deputy Surveyor in September 1862.

- 12" Yellow Pine N85°E, 21 (13.86 feet)
12" Yellow Pine N83°W, 40 (26.40 feet)

Description of corner evidence found:

Found 1-1/4" iron pipe 6" below flush

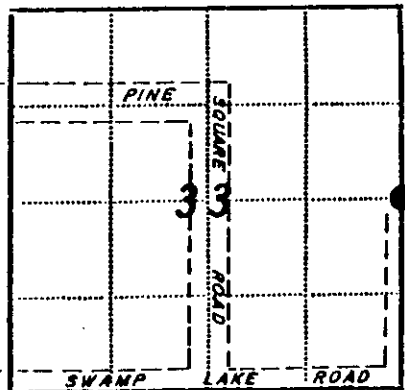


Description of monument and accessories I established to perpetuate the location of this corner:

Oneida County Berntsen Mon-ment

- 8" Jack Pine N72°W, 39.4 feet
8" Jack Pine N 4°W, 36.0 feet
6" Jack Pine N68°E, 12.2 feet

This is a copy of a copy. The original cannot be located. This is being filed for informational purposes. m9r 12/1/95



Resident witnesses None

Dated at Minocqua Wisconsin, this 11th day of October 1979

Signature James M. Marquardt Title Registered Land Surveyor (County Surveyor, Registered Land Surveyor, or other duly authorized official)

Surveyors Registration No. S-1405

Office of County of

I hereby certify that the within instrument was filed in this office for record on the day of 19, and was filed in Book No. Page No. of County Records.

Signature Title

Township Range Section Index No. Page No.

U.S. PUBLIC LAND SURVEY MONUMENT RECORD ADDENDUM

Note: This form is intended and designed to fulfill all requirements of the Wisconsin Administrative Code, Chapter A-E 7.08 U.S. Public Land Monument Record (3)(a)(b)(c)(d)(e)(f)(g)(h)(i). An additional sheet may be added if necessary to conform with said requirements.

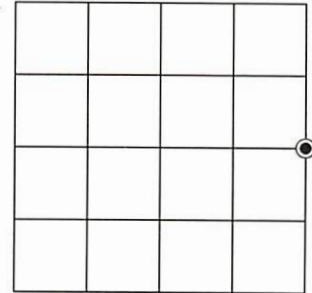
(a) CORNER LOCATION:

East Quarter Corner of Section 33
Township 37 North
Range 6 East
Town of Cassian
County of Oneida

North:
East:
Datum:
GNSS Method:
GNSS Control:

(RECORDING AREA)

SECTION 33



(b) HISTORY OF ORIGINAL CORNER ESTABLISHMENT

Original Surveyor:
Date of Survey: Commenced
Completed
Original B.T.'S

SEE PREVIOUS U.S.P.L.S. MONUMENT
RECORD DATED OCTOBER 11, 1979

(f)(g)(h) DESCRIPTION OF MONUMENT FOUND AT THIS CORNER AND IF IT WAS ACCEPTED, STATE ALL EVIDENCE (MATERIAL, TESTIMONIAL, OCCUPATIONAL, PLATS, RECORD, OTHER MONUMENTS) USED AS A BASIS FOR ESTABLISHING LOCATION. IF NOT ACCEPTED OR IF NOTHING WAS FOUND, STATE EVIDENCE USED AS BASIS FOR ESTABLISHING LOCATION. IF REESTABLISHED THROUGH LOST CORNER PROPORTIONATE METHODS, INDICATE ALL MONUMENTS, DISTANCES AND DIRECTIONS USED TO ESTABLISH. INDICATE TYPE OF MONUMENT AND SIGN POST FOUND OR SET.

This is a perpetuation of a previous U.S.P.L.S. Monument Record by James M. Marquardt, RLS-1405, dated October 11, 1979, and filed in the office of the Oneida County Register of Deeds. A complete history of the corner can be found on the previous monument record. I accept the previous location as a true and faithful perpetuation or reestablishment of the original corner location and further perpetuate it as follows.

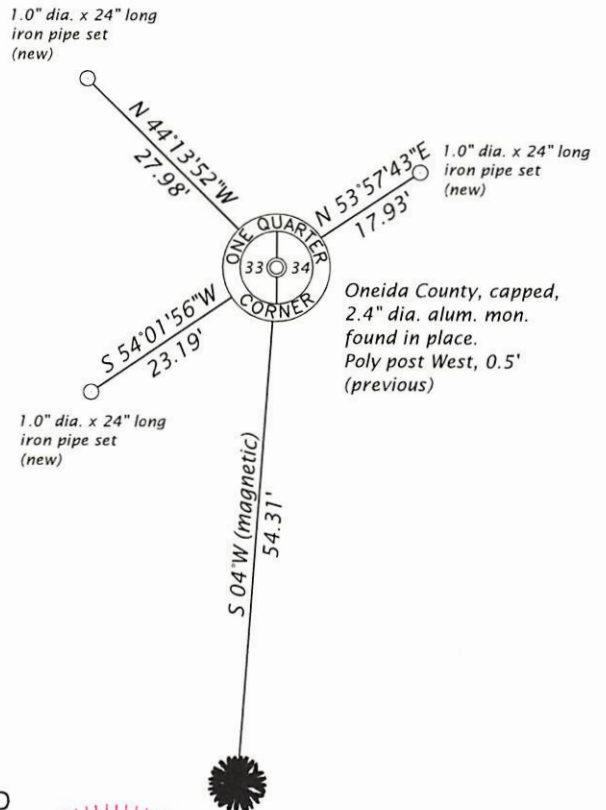
January 8, 2024, James D. Rein, PLS No. S-1234, we found and I accepted the 2.4" dia. Oneida County aluminum monument. We further perpetuate it as shown in the plan. All of the Jack Pine bearing trees are now either gone or wind blown. See below for additional ties to a bearing tree and updated or iron pipe references monuments.

(c)(d)(e) PLAN VIEW OF CORNER WITH TIES TO AT LEAST 4 WITNESS MONUMENTS. IF IN DISAGREEMENT WITH PREVIOUSLY ESTABLISHED CORNER, SHOW THE DISTANCE BETWEEN THE TWO CORNERS AND ALSO INDICATE THE TIES TO THE DISPUTED CORNER.

Bearings are Oneida County Grid, except as noted.



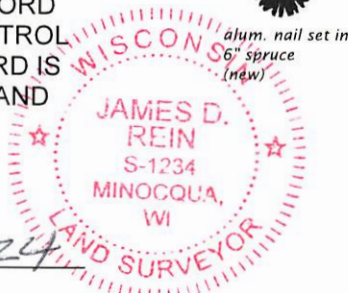
Scale: 1" = 20'



(i) I, JAMES D. REIN, PROFESSIONAL LAND SURVEYOR NO. S-1234 HEREBY CERTIFY THAT THE CORNER LOCATION ON THIS RECORD WAS DETERMINED BY ME OR UNDER MY DIRECTION AND CONTROL AND THAT THIS U.S. PUBLIC LAND SURVEY MONUMENT RECORD IS CORRECT AND COMPLETE TO THE BEST OF MY KNOWLEDGE AND BELIEF.

James D. Rein
SIGNATURE

MARCH 8, 2024
DATE



INDEX NO. X - 13
3706332000