

CERTIFIED LAND CORNER RESTORATION

State of Wisconsin }
County of Oneida } ss.

I John H. Fisher, do hereby certify that on the 25 day of May, 19 81, I found evidence of the south one quarter corner of Section 35 Township 37N, Range 6E, Fourth Principal Meridian, as described hereon; and that from this evidence I established a new monument and accessories as described hereon to perpetuate the original location of this corner:

Description of original monument and accessories and subsequent restorations:

The original Gov't. Survey was performed by Alfred Millard, Deputy Surveyor in August 1860.

Set wood post

12' Aspen N75°W, 58 links
12" White Pine N85°W, 30 links

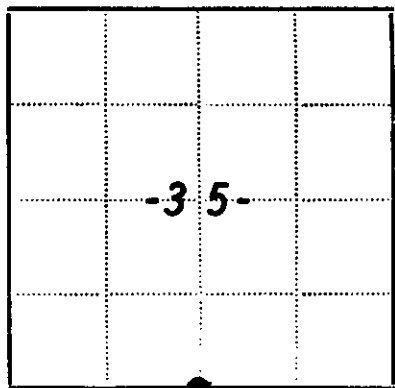
Description of corner evidence found:

Railroad spike in centerline of County Highway "K".

Description of monument and accessories I established to perpetuate the location of this corner:

Set Witnesses:

P.K. nail in 12" Scotch Pine S14°E, 38.1 feet
P. K. nail in 20" White Pine N40°W, 66.8 feet



Resident witnesses.....

Dated at Minocqua Wisconsin, this 16 day of June 19 81

Signature John H. Fisher Registered Land Surveyor
(County Surveyor, Registered Land Surveyor, or other authorized official)

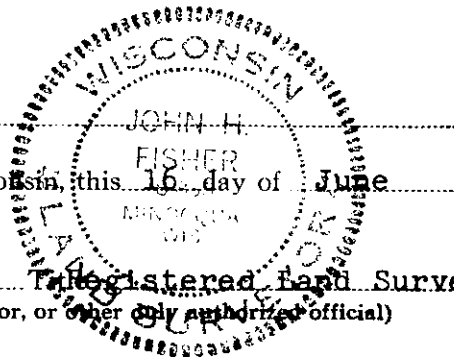
Surveyors Registration No. S-836

Office of REGISTER OF DEEDS County of Oneida

I hereby certify that the within instrument was filed in this office for record on the 17th day of September 1982, and was filed in Book No. Page No. of County Records.

Signature Dona Verage Kuehn Title REGISTER OF DEEDS

Township....., Range....., Section....., Index No....., Page No.....



61-7

U.S. PUBLIC LAND SURVEY MONUMENT RECORD

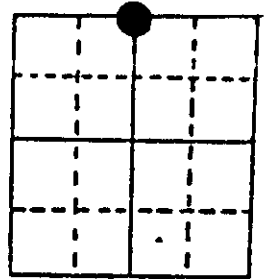
Note: This form is intended and designed to fulfill all requirements of Wisconsin Administrative Code, Chapter A-E 7.08 U.S. Public Land Survey Monument Record (3) (a) (b) (c) (d) (e) (f) (g) (h) (i). An additional sheet may be added if necessary to conform with said requirements.

(a) Corner location: Township 36 North

Range 6 East/West

Town/City/Village Nokomis

County Oneida



Section 2

(b) (f) (g) (h) Description of monument found at this corner and if it was accepted, state all evidence (material, testimonial, occupational, plats, records, other monuments) used as a basis for accepting. If not accepted or if nothing was found, state evidence used as basis for establishing location. If reestablished through lost corner proportionate methods, indicate all monuments, distances and directions used to establish. Indicate type of monument found or set and sign post.

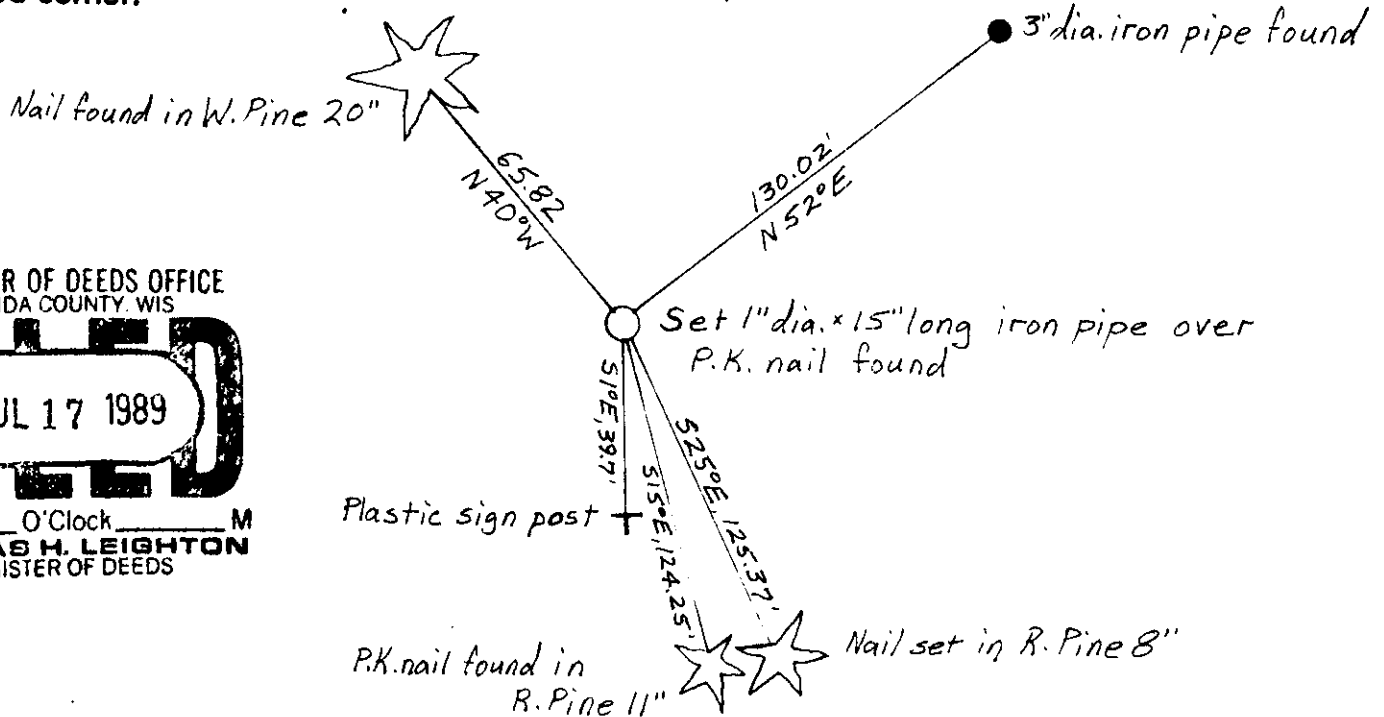
Sept., 1860, Alfred Millard set a wood post: Aspen 12" N75W, 581ks., W. Pine 12' N85W, 301ks.

8-19-77, Timberland Surveyors Map C-414 corner shown as 80 penny spike.

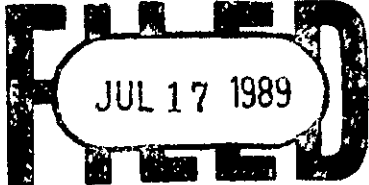
5-16-89, I found a PK nail which has been used previously and checks with information on Timberland map.

I replaced the nail with a 1" dia., 15" long iron pipe: found nail in W. Pine 20' N40W, 65.82', found iron pipe 3" N52E, 130.02', found PK in N. Pine 11' S15E, 124.25', set spike in N. Pine 8' S25E, 125.37', set plastic survey marker sign S1E, 39.7'.

(c) (d) (e) Plan view of corner with ties to at least 4 witness monuments. If in disagreement with previously established corner, show the distances between the two corners and also indicate the ties to the disputed corner.



REGISTER OF DEEDS OFFICE
ONEIDA COUNTY, WIS.



At _____ O'Clock _____ M
THOMAS H. LEIGHTON
REGISTER OF DEEDS

JEFFREY W. AUSTIN S-1885

(i) I, _____
(type or print name) certify that the corner location on this record was determined by me or under my direction and control and that this U.S. Public Land Survey Monument Record is correct and complete to the best of my knowledge and belief.

Signature

Date

JUNE 30, 1989



Index No. A-19

3706350020

U.S. PUBLIC LAND SURVEY MONUMENT RECORD

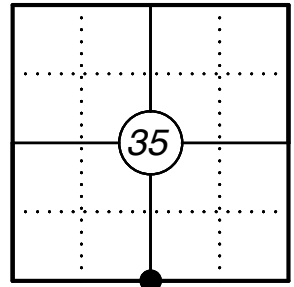
This form is intended and designed to fulfill all requirements of Wisconsin Administrative Code, Chapter A-E 7.08 U.S. Public Land Survey Monument Record (3) (a)(b)(c)(d)(e)(f)(g)(h)(i). An additional sheet may be added if necessary to confirm with said requirements.

Oneida County
Land Information Office
Filed
3/26/2025

(a) Corner Location:

S 1/4 Corner Section 35
Township 37 North
Range 6 East
Town of Cassian
County of Oneida

Corner ID: 3706350020



(b) History of Original Corner:

Original Surveyor: Alfred Millard
Date of Survey: August, 1860.
Original B.T.'s: 12" Aspen - N 75° W, 58 Links
12" White Pine - N 85° W, 30 Links

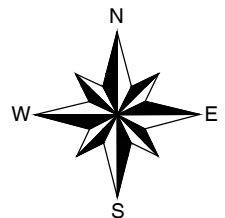
(f)(g)(h) Description of monument found at this corner and if it was accepted, state all evidence (material, testimonial, occupational, plats, records, other monuments) used as a basis for establishing location. If reestablishing through lost corner proportionate methods, indicate all monuments, distances, and directions used to establish. Indicate type of monument and sign post found or set.

For corner history, see previous U.S. Public Land Survey Monument Record by Jeffrey Austin, dated June 30, 1989 and by John Fisher, dated May 25, 1981.

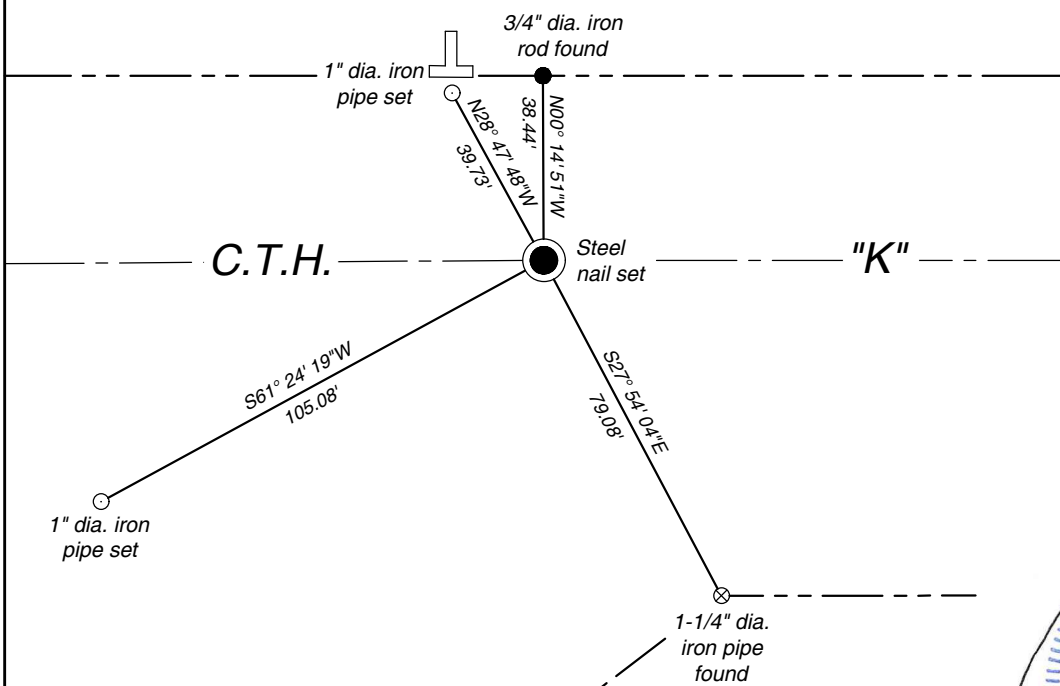
1/16/2024 - After conducting a search for the corner and any witnesses shown on previous USPLS corner forms, all that was recovered was a bent iron pipe found near the corner location below the surface of the pavement in County Highway "K" that appears to have been disturbed during the most recent road work. I accepted the Oneida County published coordinate as the best available evidence of the correct position for this corner, which fits well with surveys of record. I set a steel nail in the pavement of County Highway "K" at the published coordinate location and witnessed the corner as shown below.

(c)(d)(e) Plan view of corner with ties to at least four witnesses. If in disagreement with previously established corner, show the distances between the two corners and also indicate the tie to the disputed corner.

Oneida County Grid Bearings
Not to scale



* Vinyl "T" post at NW reference monument.



Certification

I, Gregory S. Maines, Professional Land Surveyor No. 2729, hereby certify that the corner location on this record was referenced by me or under my direction and control and that this U.S. Public Land Survey Monument Record is complete to the best of my knowledge and belief.
REF: 2022339

Index No.: