

At \_\_\_\_\_ M  
THOMAS H. LEIGHTON  
REGISTER OF DEEDS

Recorders Data

This form is intended to fulfill the requirements of Chapter A-E7.08 (3)(a) thru (i) U.S. Public Land Survey Monument Location Record, Wisconsin Administrative Code. Use the reverse side of form for continuation.

**U.S. PUBLIC LAND SURVEY MONUMENT LOCATION RECORD**

USPLS CORNER: EAST WITNESS MC SECTION: 10 TOWNSHIP: 37 NORTH RANGE: 7 EAST  
 NAME OF WATERWAY FOR M.C. CORNER : LONG LAKE SECTION LINE: NORTH  
~~(CITY)(VILLAGE)(TOWN) OF:~~ CASSIAN COUNTY OF: ONEIDA

Description of monument found or placed and all other evidence used as the basis for monument location; including monuments and measurements required if the corner location was reestablished by lost corner proportionate methods. Also indicate name of the original surveyor, original survey date and the corner monument, bearing trees, witness or other reference monuments established, including measured bearing and distance ties, from available survey records.

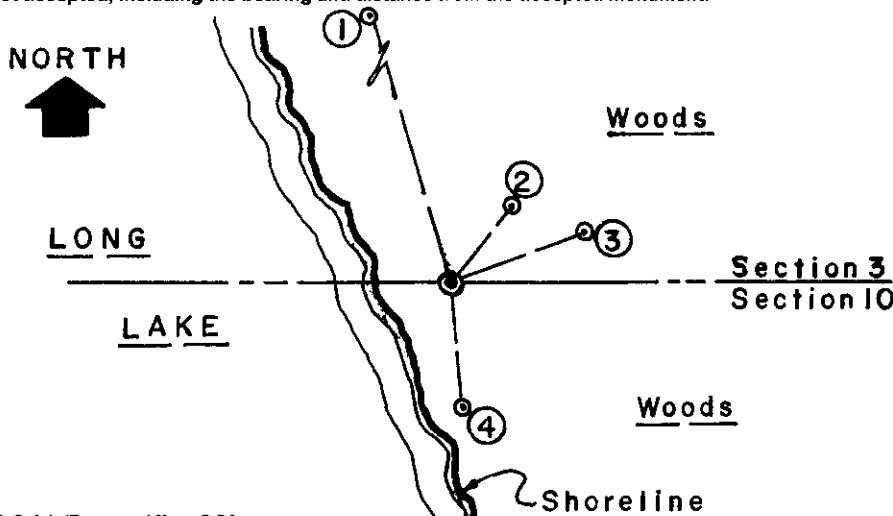
Found and accepted an old rusted, plumb and stable 1.25" dia. iron pipe with uncapped top 5" up at this corner and a 1.5" dia. stainless steel tube marker pipe along the East side of old iron pipe monument; I removed the 32" long marker pipe and left it flat on grade next to a standard white poly 'T' marker post I set 10" west of the old iron pipe corner monument, which I left in place and drove a standard 2" dia. by 30" long aluminum pipe monument over it with stamped Oneida County cap 6" up. The corner falls 7 feet East of existing lakeshore bearing N25°W at bottom of steep bank up to East. I also found a rotted off 5" dia. wood marker post with aluminum location tag in notched top flat on grade west of the MC corner. A foot path leads North along the lakeshore and East up steep slope to a N/S woods road along crest thereof, which is accessible from improved lake lot at Fire No. 5145 Horsehead Lake Road.

In November 1862, Joseph H. Jenkins/GLO set no wood MC posts on the section line at either bank of Long Lake per non-entry in record field notes.

In December 1973, Lester J. Schmit/RLS 1192 notes a WCD wood post at this corner per his Plat of Survey filed as C-1573 in Oneida County survey records. In May 1974, Arvin M. Hess/RLS 666 notes a WCD wood post and iron pipe at this corner per legend on his Plat of Survey filed as C-293 in Oneida County survey records.

This recovery completed May 14, 2003; there were no direct witnesses.

Plan view map of monument location with bearing and distance ties to a minimum of four(4) described witness or reference monuments of concrete, natural stone, iron, live bearing trees or equivalent material. If applicable, also show a minimum of two(2) bearing and distance ties to any other monument found and not accepted; including the bearing and distance from the accepted monument.



**WITNESS MONUMENT TIES:**

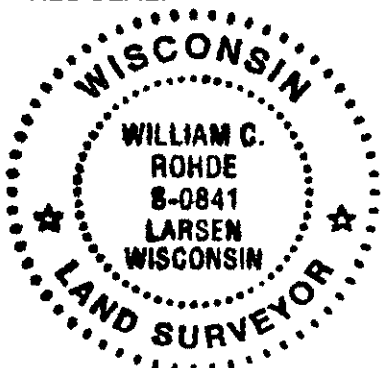
- ① New 15" Pr BT N16°W 35.16'.
- ② New 19" Pr BT N38°E 10.11'.
- ③ Old 20" Pr BT with upper blaze open N68°E 15.20'; I nailed a standard BT sign to upper face.
- ④ New 20" Pr BT S06°E 13.67'.

I flagged all BTs, the corner monument and 'T' marker post with blaze orange tape.

SCALE: 1" = 20'

Unless otherwise indicated, all bearing tree ties are to a .25" dia. by 2.5" long PK nail with a 1.25" dia. steel washer driven into unblazed right face and a .25" dia. by 2.5" long PK nail with a 2" dia. steel washer stamped BT is also driven into unblazed face of bearing tree at DBH; the basis for measured bearings is by compass to nearest degree and all tie distances are measured horizontal by steel tape corrected to nearest 1/100th feet at standard temperature of 68° F.

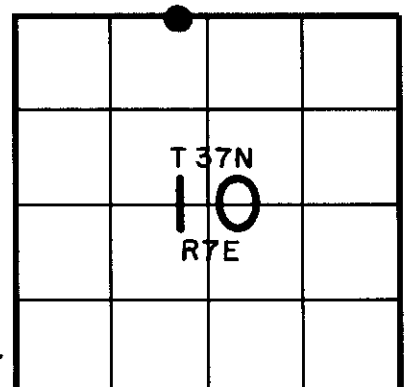
RLS SEAL:



**LAND SURVEYOR CERTIFICATE:**

I, William C. Rohde, hereby certify that I am duly licensed as a Professional Land Surveyor in the State of Wisconsin; that this USPLS monument location was determined by me and/or under my direct supervision and control; and that this U.S. Public Land Survey Monument Location Record is true and correct to the best of my knowledge and belief.

Signed *William C. Rohde*  
 William C. Rohde RLS 841



SECTION LOCATION MAP  
 INDEX NO. E 14-15

MAY 16 2023

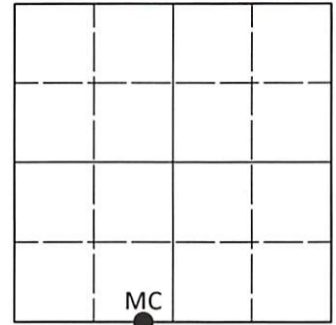
KYLE J. FRANSON  
REGISTER OF DEEDS

**U.S. PUBLIC LAND SURVEY MONUMENT RECORD**

Note: This form is intended and designed to fulfill all requirements of Wisconsin Administrative Code, Chapter A-E 7.08 U.S. Public Land Survey Monument Record (3)(a-i).

(a) CORNER LOCATION  
Meander Cor. of Secs. 3 & 10  
Township 37 North  
Range 7 East of the 4th P.M.  
Town of Cassian  
County of Oneida

WISCORS - Oneida County  
N: 193,864.29 USft  
E: 215,375.31 USft  
Datum: NAD 83(2011) ep. 2010.00  
GNSS Method: RTN - Offset  
GNSS Control: WISCORS VRS



Sec. 3, T. 37 N., R. 7 E.

(b)(f)(g)(h) Description of monument found at this corner and if it was accepted, state all evidence (material, testimonial, occupational, plats, records, other monuments) used as a basis for accepting. If not accepted or if nothing was found, state evidence used as basis for establishing location. If re-established through lost corner proportionate methods, indicate all monuments, distances and directions used to establish. Indicate type of monument and sign post found or set.

This record is a perpetuation of the following land corner document(s):

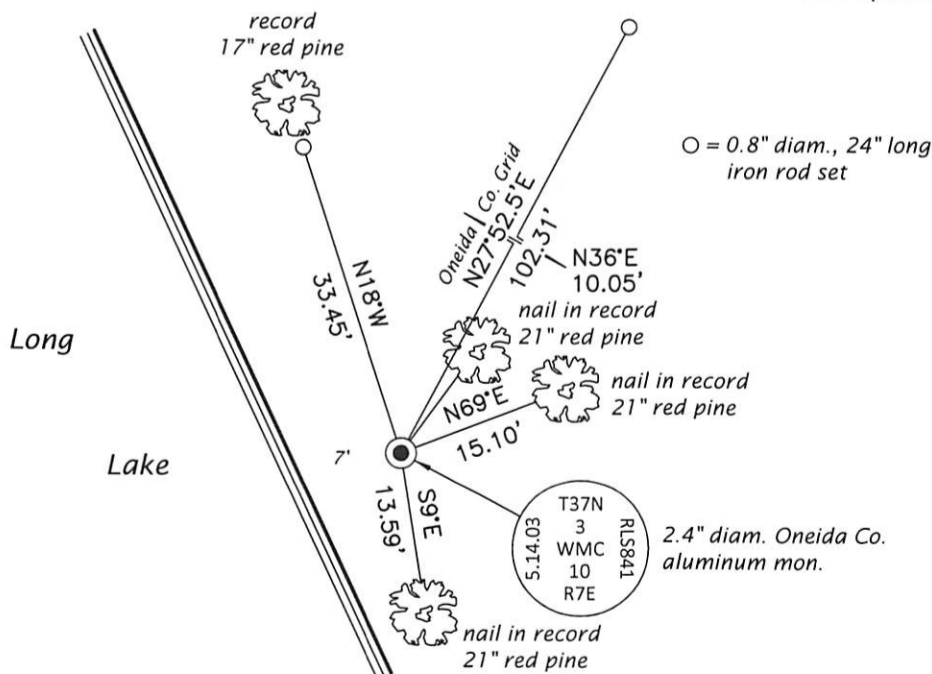
August 1, 2003: USPLS Monument Record by William C. Rohde, filed in Oneida County

A complete history of the corner can be found on the previous land corner document(s). I accept the record activity as a true and faithful perpetuation or reestablishment of the original corner location and further perpetuate it as described below.

April 29, 2023: I found and accepted the record monument, a 2.4" diam. aluminum pipe, firmly set, with a 3.3" diam. Oneida Co. aluminum cap projecting 3" above the ground surface. I found or established accessories as indicated below. I found a white vinyl sign post bearing West, 1.0 ft.

The coordinate value shown has been determined by traversing from two or more GNSS offset points satisfying the accuracy requirements defined and qualified in the 2022 Oneida County Fee Schedule for USPLS Corners.

(c)(d)(e) Plan view of corner with ties to at least 4 witness monuments. If in disagreement with previously established corner, show the distances between the two corners and also indicate the ties to the disputed.



Magnetic  
1" = 20'

REGISTER OF DEEDS OFFICE  
ONEIDA COUNTY  
FILED

MAY 16 2023

KYLE J. FRANSON  
REGISTER OF DEEDS

(i) I, Jeffrey W. Austin, Professional Land Surveyor No. S-1885, hereby certify that the corner location on this record was determined by me or under my direction and control and that this U.S. Public Land Survey Monument Record is correct and complete to the best of my knowledge and belief.

*[Handwritten Signature]*  
Signature

MAY 1, 2023  
Date