

U.S. PUBLIC LAND SURVEY MONUMENT RECORD

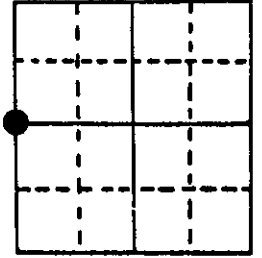
Note: This form is intended and designed to fulfill all requirements of Wisconsin Administrative Code, Chapter A-E 5.02, U.S. Public Land Survey Monument Record (3) (a) (b) (c) (d) (e) (f) (g) (h) (i). An additional sheet may be added if necessary to conform with said requirements.

(a) Corner location: Township 37 North

Range 7 East

Town Cassian

County Oneida



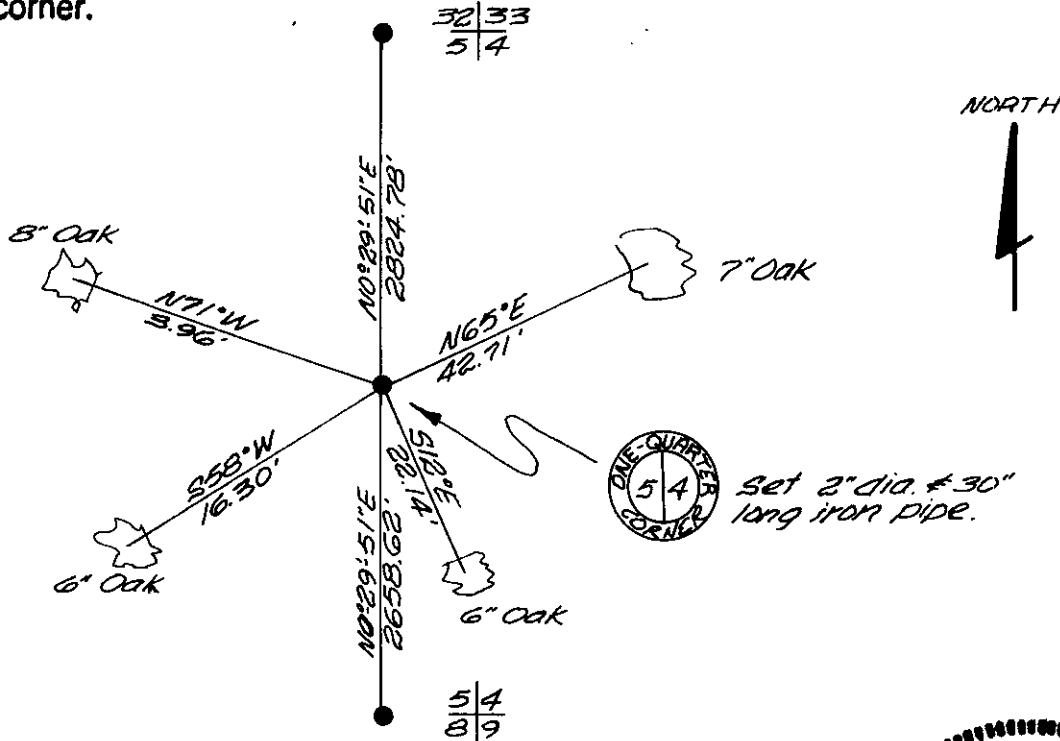
Section 4

(b) (f) (g) (h) Description of monument found at this corner and if it was accepted, state all evidence (material, testimonial, occupational, plats, records, other monuments) used as a basis for accepting. If not accepted or if nothing was found, state evidence used as basis for establishing location. If reestablished through lost corner proportionate methods, indicate all monuments, distances and directions used to establish.

November 1862 - Joseph Jenkins, Deputy Surveyor - Set one-quarter section post. Original bearing trees: Aspen 10" N10°E, 6 links
 W. Pine 7" S29°W, 13 links

February 1986 - Jerome N. Kraemer made search and found no evidence of one-quarter. Set 2" dia. iron pipe, protruding up 6" above ground level by single proportionate method. Established new bearing trees as shown in plan view below. Distances measured to nail set in base of bearing tree. Set square scribed oak post 1' northwest.

(c) (d) (e) Plan view of corner with ties to at least 4 witness monuments. If in disagreement with previously established corner, show the distances between the two corners and also indicate the ties to the disputed corner.



(i) I, Jerome N. Kraemer, Registered Land Surveyor
 (type or print name) certify that the location on this record was determined by me or under my direct supervision and control and that this U.S. Public Land Survey Monument Record is correct and complete to the best of my knowledge and belief.

Jerome N. Kraemer February 25th, 1986
 Signature Date



Index No. 0-9

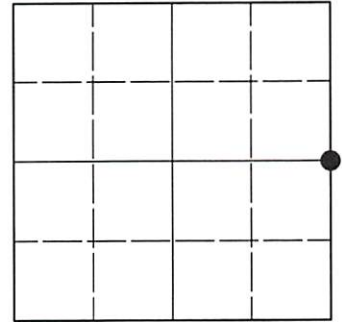
3707052000

U.S. PUBLIC LAND SURVEY MONUMENT RECORD

Note: This form is intended and designed to fulfill all requirements of Wisconsin Administrative Code, Chapter A-E 7.08 U.S. Public Land Survey Monument Record (3)(a-i).

(a) CORNER LOCATION
 1/4 Cor. of Secs. 4 & 5
 Township 37 North
 Range 7 East of the 4th P.M.
 Town of Cassian
 County of Oneida

WISCRS - Oneida County
 N: 196,412.56 USft
 E: 207,719.83 USft
 Datum: NAD 83(2011) ep. 2010.00
 GNSS Method: RTN - Offset
 GNSS Control: WISCORS VRS



Sec. 5, T. 37 N., R. 7 E.

(b)(f)(g)(h) Description of monument found at this corner and if it was accepted, state all evidence (material, testimonial, occupational, plats, records, other monuments) used as a basis for accepting. If not accepted or if nothing was found, state evidence used as basis for establishing location. If re-established through lost corner proportionate methods, indicate all monuments, distances and directions used to establish. Indicate type of monument and sign post found or set.

This record is a perpetuation of the following land corner document(s):

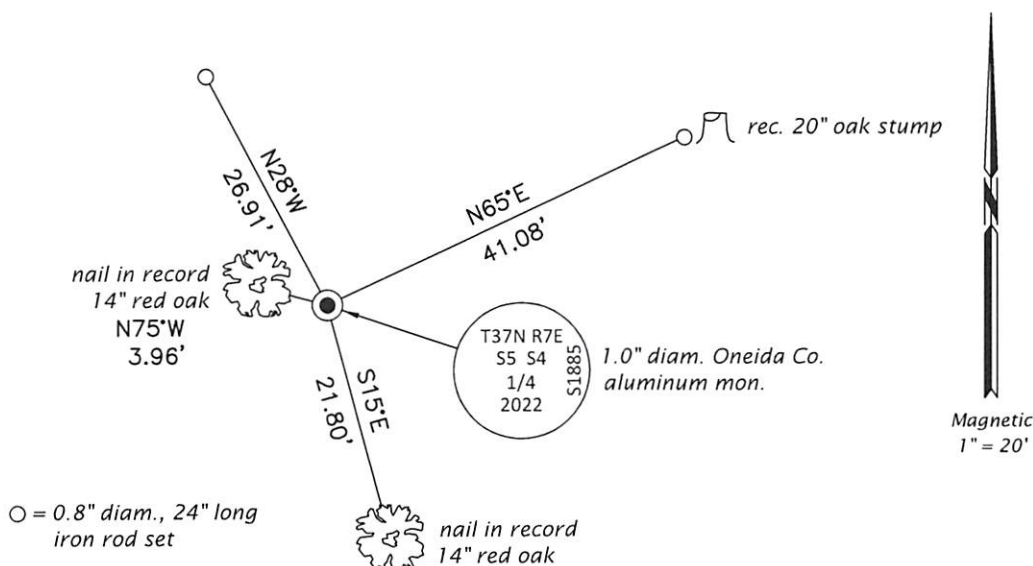
February 25, 1986: USPLS Monument Record by Jerome N. Kraemer, filed in Oneida County

A complete history of the corner can be found on the previous land corner document(s). I accept the record activity as a true and faithful perpetuation or reestablishment of the original corner location and further perpetuate it as described below.

June 9, 2022: I found and accepted the record monument, a 2.4" diam., 30" long iron pipe with an iron plumbing cap. The record bearing tree at S58°W is a stump. In place of the iron pipe, I set a 1.0" diam., 30" long aluminum pipe with a 2.5" diam. Oneida Co. aluminum cap flush with the ground surface. I found or established accessories as indicated below. I set a white vinyl sign post bearing South, 1.1 ft.

The coordinate value shown has been determined by traversing from two or more GNSS offset points satisfying the accuracy requirements defined and qualified in the 2022 Oneida County Fee Schedule for USPLS Corners.

(c)(d)(e) Plan view of corner with ties to at least 4 witness monuments. If in disagreement with previously established corner, show the distances between the two corners and also indicate the ties to the disputed.

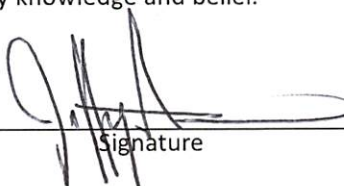


REGISTER OF DEEDS OFFICE
 ONEIDA COUNTY
 FILED

AUG 02 2022

KYLE J. FRANSON
 REGISTER OF DEEDS

(i) I, Jeffrey W. Austin, Professional Land Surveyor No. S-1885, hereby certify that the corner location on this record was determined by me or under my direction and control and that this U.S. Public Land Survey Monument Record is correct and complete to the best of my knowledge and belief.


 Signature

JULY 2, 2022
 Date