

U.S. PUBLIC LAND SURVEY MONUMENT LOCATION RECORD

Recorders Data

CORNER: North MC SECTION: 5 TOWNSHIP 37 NORTH RANGE 7 EAST/WEST

FOR M.C. CORNER INDICATE: NAME OF WATERWAY Sand Lake SECTION LINE West

(CITY)(VILLAGE)(TOWN) OF: Cassian COUNTY OF: Oneida

Description of monument found or placed and all other evidence used as a basis for monument location; including all monuments and related measurements required if the corner location is reestablished by lost corner proportionate methods. Also indicate name of original surveyor, survey date, corner monument set and established bearing trees, witness or reference monuments with ties from available records.

Old 2" dia. by 54" long iron pipe monument with uncapped top replaced by a standard 2" dia. by 30" long aluminum pipe monument with stamped Oneida County cap 4" above existing grade, and previously referenced by T. Loftus in 1992 per notes provided to Foltz & Associates, which I found undisturbed for new ties below.

In 1862, Jenkins/GLO set a wood post as the original meander corner and marked OBTs, a 7" Tamarack N08°E 20 lks and a 6" Tamarack N14°W 20 lks, all of which are now obliterated or of unreliability for positioning purposes.

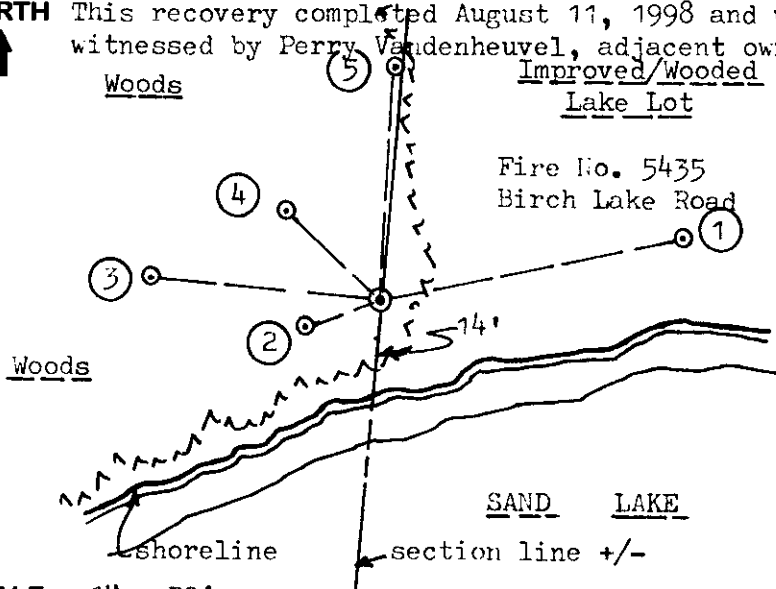
In 1953, Biberstine notes an iron pipe symbol on his Sand Lake Subdivision Plat filed in Oneida County records.

In 1957, Cameron/Northwoods Surveyors, notes an iron pipe symbol as MC and in parenthesis "(Orig. BT stumps)" at this corner location per his Plat of Survey filed in Foltz and Associates, Inc. records; formerly Northwoods Surveyors. In 1964, Griffin of Northwoods Surveyors also indicated an iron pipe at this MC per a plat of survey filed in Foltz and Associates, Inc. records.

In 1980, Stuth/Owens-Illinois on his 1987 map in Oneida Co. records, notes an iron pipe at this corner. In 1992, Plat of Survey B-2492, Oneida Co. records, by T. Loftus denotes this corner by legend. In 1993, Map A-664, Oneida records, by Foltz & Associates indicates an aluminum monument found at this corner location.

Plan view map of monument location with bearing and distance ties to a minimum of four(4) described witness or reference monuments of concrete, natural stone, iron, live bearing trees or equivalent material. If applicable, also show a minimum of two(2) bearing and distance ties to any other monument found and not accepted; including the bearing and distance from the accepted monument. Indicate the basis for bearings of reference ties if not referenced to magnetic north.

NORTH This recovery completed August 11, 1998 and was witnessed by Perry Vandenheuvel, adjacent owner Woods Improved/Wooded Lake Lot



SCALE: 1" = 30'

Unless otherwise indicated, all bearing tree ties are to a .25" dia. by 2.5" long PK nail with a 1.25" dia. steel washer driven into unblazed right face and a .25" dia. by 2.5" long PK nail with a 2" dia. steel washer stamped 'BT' is also driven into unblazed face of bearing tree at DBH; the basis for measured bearings is magnetic to nearest degree and all tie distances are horizontal measure to nearest 1/100th feet.

WITNESS MONUMENT TIES:

- ① 60d spike found in right face of 18" Pw BT N78°E 48.09'.
- ② 60d spike found in right face of 5 1/2" Mr BT S71°W 12.57'.
- ③ 60d spike found in right face of 7" Or BT N84°W 36.40'.
- ④ 60d spike found in left face of 25" Pw BT N47°W 20.38'.
- ⑤ Old uncapped 2" dia. iron pipe found, 5" high, N03°E 36.58'.

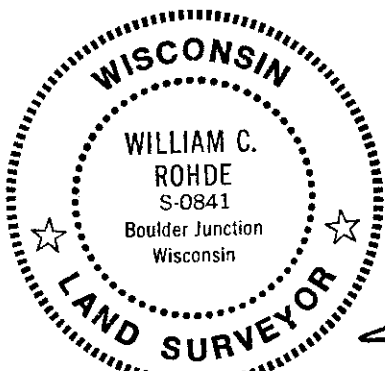
Note: Standard white poly 'T' marker post set 6" North of corner monument.

LAND SURVEYOR CERTIFICATION:

I, William C. Rohde, hereby certify that I am a duly licensed Professional Land Surveyor in Wisconsin, that this USPLS monument location was determined by me or under my direction and control, and that this U.S. Public Land Survey Monument Location Record is true and correct to the best of my knowledge and belief.

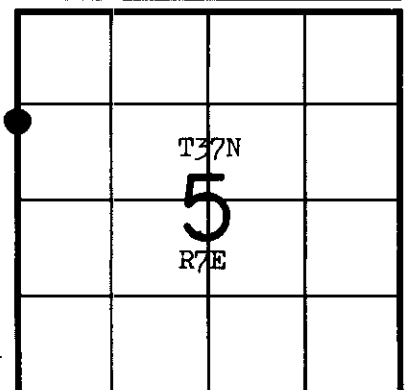
William C. Rohde Date: 8-25-98
Signature

This form is intended to fulfill requirements of Chapter A-E 7.08 (3)(a)(b)(c)(d)(e)(f)(g)(h)(i) U.S. Public Land Survey Monument Location Record, Wisconsin Administrative Code. Use reverse side for geodetic location data and/or continuation purposes.



RLS SEAL

SHEET NO. 1 OF 1



SECTION LOCATION MAP

INDEX NO. B-C-5
3707062800

INDEX NO. B-C-5

U.S. PUBLIC LAND SURVEY MONUMENT RECORD

REGISTER OF DEEDS OFFICE
ONEIDA COUNTY
FILED

NOV 26 2018

Note: This form is intended and designed to fulfill all requirements of the Wisconsin Administrative Code, Chapter A-E 7.08 U.S. Public Land Monument Record (3)(a)(b)(c)(d)(e)(f)(g)(h)(i). An additional sheet may be added if necessary to conform with said requirements.

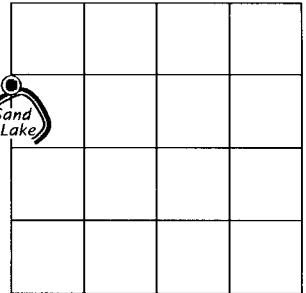
KYLE J. FRANSON
REGISTER OF DEEDS

(a) CORNER LOCATION:
Meander Corner of Section 5
Township 37 North
Range 7 East
Town of Cassian
County of Oneida

North: USft
East: USft
Datum:
GNSS Method:
GNSS Control:

(RECORDING AREA)

SECTION 5



(b) HISTORY OF ORIGINAL CORNER ESTABLISHMENT

Original Surveyor:
Date of Survey: Commenced
Completed
Original B.T.'S

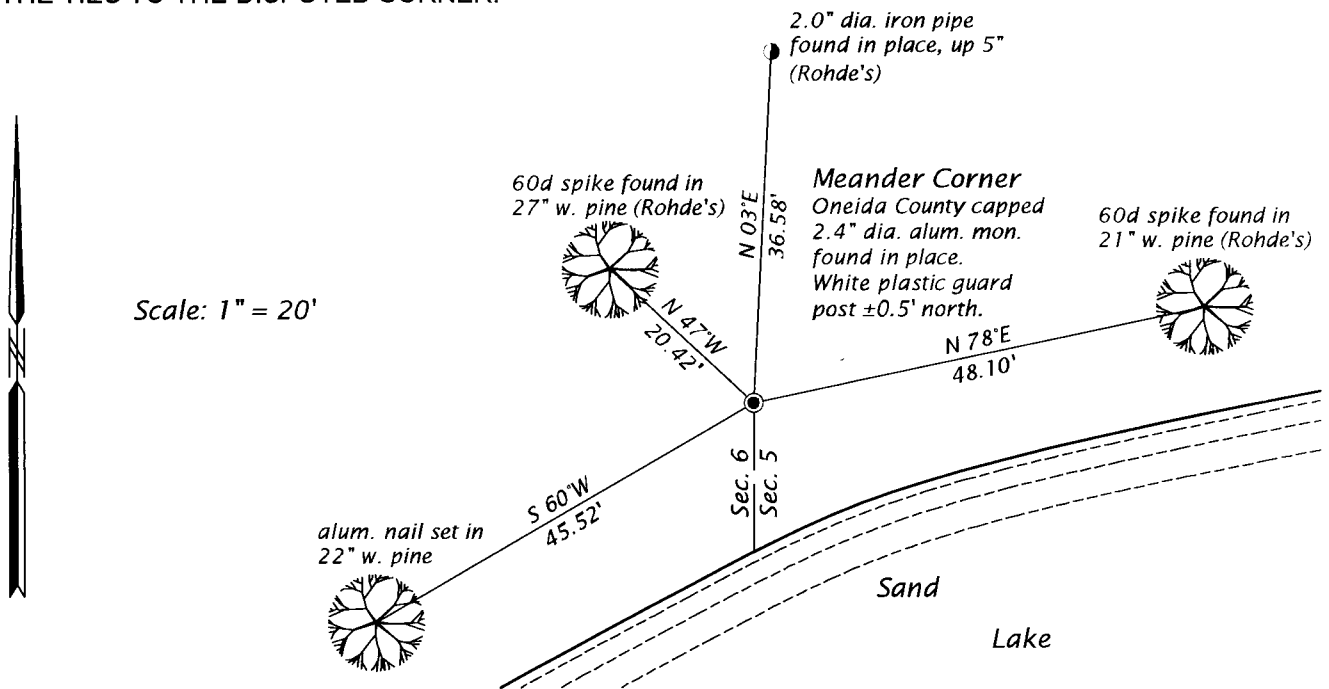
**SEE PREVIOUS USPLS MONUMENT
RECORD FORM DATED 8-25-1998.**

(f)(g)(h) DESCRIPTION OF MONUMENT FOUND AT THIS CORNER AND IF IT WAS ACCEPTED, STATE ALL EVIDENCE (MATERIAL, TESTIMONIAL, OCCUPATIONAL, PLATS, RECORDS, OTHER MONUMENTS) USED AS A BASIS FOR ESTABLISHING LOCATION. IF NOT ACCEPTED OR IF NOTHING WAS FOUND, STATE EVIDENCE USED AS BASIS FOR ESTABLISHING LOCATION. IF REESTABLISHED THROUGH LOST CORNER PROPORTIONATE METHODS, INDICATE ALL MONUMENTS, DISTANCES AND DIRECTIONS USED TO ESTABLISH. INDICATE TYPE OF MONUMENT AND SIGN POST FOUND OR SET.

This is a perpetuation of a previous USPLS Monument Record by William C. Rohde, RLS, dated August 25, 1998, and filed in the office of the Oneida County Register of Deeds. A complete history of the corner can be found on the previous monument record. I accept the previous location as a true and faithful perpetuation or reestablishment of the original corner location and further perpetuate it as follows.

March 17, 2017, James D. Rein, PLS, found and accepted the Oneida County aluminum monument set by Rohde. We also recovered some of his remaining bearing trees. The southwesterly maple and the northwesterly oak were gone. See below for updated reference ties.

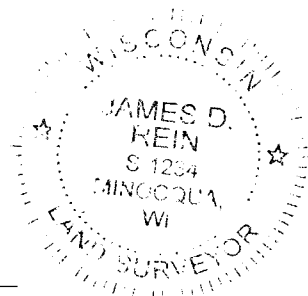
(c)(d)(e) PLAN VIEW OF CORNER WITH TIES TO AT LEAST 4 WITNESS MONUMENTS. IF IN DISAGREEMENT WITH PREVIOUSLY ESTABLISHED CORNER, SHOW THE DISTANCE BETWEEN THE TWO CORNERS AND ALSO INDICATE THE TIES TO THE DISPUTED CORNER.



(i) I, JAMES D. REIN, PROFESSIONAL LAND SURVEYOR NO. S-1234 HEREBY CERTIFY THAT THE CORNER LOCATION ON THIS RECORD WAS DETERMINED BY ME OR UNDER MY DIRECTION AND CONTROL AND THAT THIS U.S. PUBLIC LAND SURVEY MONUMENT RECORD IS CORRECT AND COMPLETE TO THE BEST OF MY KNOWLEDGE AND BELIEF.

[Handwritten Signature]
SIGNATURE

3-20-17
DATE



3707062800

INDEX NO. BC-5