

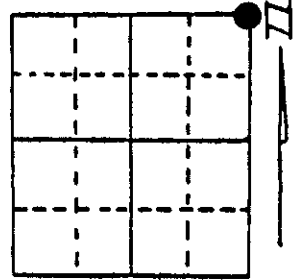
U.S. PUBLIC LAND SURVEY MONUMENT RECORD

Note: This form is intended and designed to fulfill all requirements of Wisconsin Administrative Code, Chapter A-E 5.02, U.S. Public Land Survey Monument Record (3) (a) (b) (c) (d) (e) (f) (g) (h) (i). An additional sheet may be added if necessary to conform with said requirements.

(a) Corner location: Township 37 North
 Range 7 East/West

Town/City/Village Cassian

County Oneida



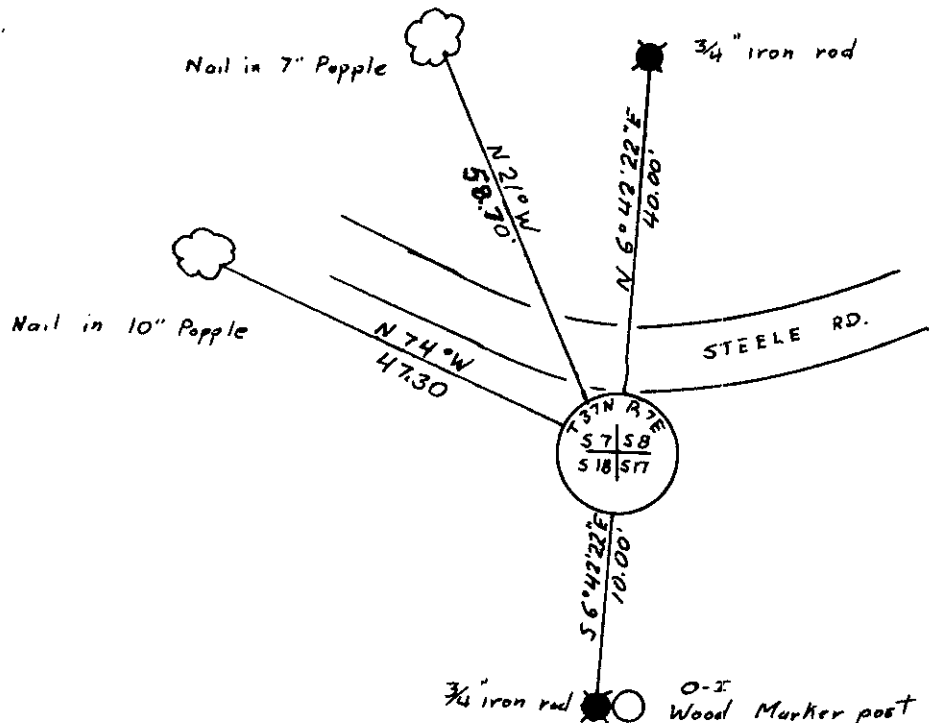
Section 18

(b) (f) (g) (h) Description of monument found at this corner and if it was accepted, state all evidence (material, testimonial, occupational, plats, records, other monuments) used as a basis for accepting. If not accepted or if nothing was found, state evidence used as basis for establishing location. If reestablished through lost corner proportionate methods, indicate all monuments, distances and directions used to establish.

Found 1-1/2" iron pipe and marker post with Aluminum Tag calling for corner 10 feet north.

Replaced 1-1/2" iron pipe with 3" diameter Aluminum Tablet stamped to identify corner on 2" Aluminum pipe 2.5 feet long.

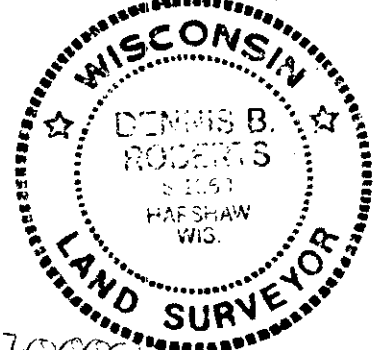
(c) (d) (e) Plan view of corner with ties to at least 4 witness monuments. If in disagreement with previously established corner, show the distances between the two corners and also indicate the ties to the disputed corner.



REGISTER OF DEEDS OFFICE
 ONEIDA COUNTY, WIS.
FILED
 AUG 6 1986
 At 11:05 O'Clock
 DORIS VERAGE KUEHN
 REGISTER OF DEEDS

(i) I, Dennis B. Roberts
 (type or print name) certify that the corner location on this record was determined by me or under my direction and control and that this U.S. Public Land Survey Monument Record is correct and complete to the best of my knowledge and belief.

Dennis B. Roberts Signature
July 22, 1986 Date



Index No. 45

3707070000

