

**U.S. PUBLIC LAND SURVEY MONUMENT LOCATION RECORD**

Recorders Data

CORNER: North 1/4 SECTION: 18 TOWNSHIP 37 NORTH RANGE 7 EAST/WEST

FOR M.C. CORNER INDICATE: NAME OF WATERWAY N/A SECTION LINE N/A

(CITY)(VILLAGE)(TOWN) OF: Cassian COUNTY OF: Oneida

Description of monument found or placed and all other evidence used as a basis for monument location; including all monuments and related measurements required if the corner location is reestablished by lost corner proportionate methods. Also indicate name of original surveyor, survey date, corner monument set and established bearing trees, witness or reference monuments with ties from available records.

Found and accepted a 1/2" nominal dia. iron pipe monument with uncapped top near surface of existing unimproved single lane woods roadway as corner location, about 3' North of road centerline. I drove a 1" dia. by 22" long iron pipe over the iron pipe found to 3" below grade. I also found a standard white poly 'T' marker post 13.4' North of the corner on road cut bank, and four(4) flagged and spiked older bearing trees which I accepted for my new ties below. The older BTs are at least a year or more old and not currently of record at the Oneida County Surveyor office.

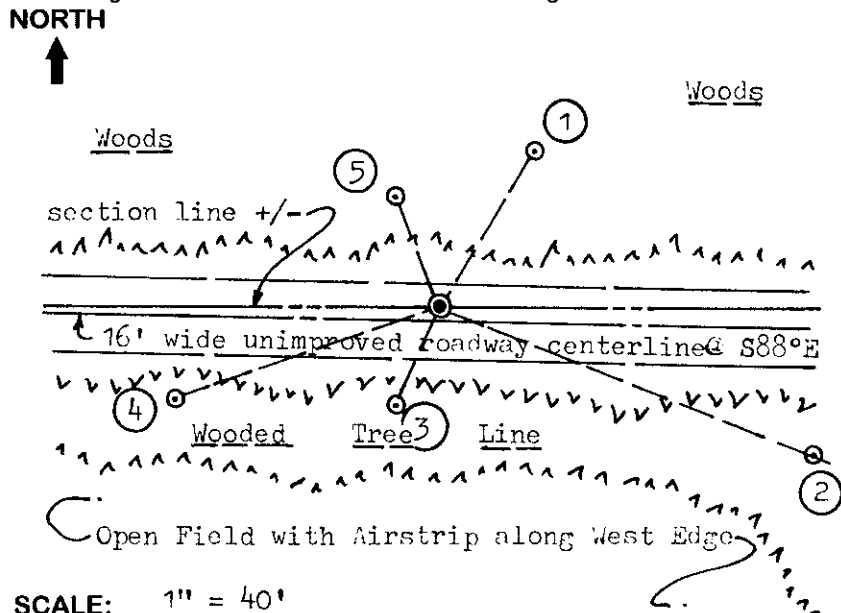
In 1862, Jenkins/GLO set a wood post as the 1/4 corner and marked OBTs, a 7" Pw N61°W 13 lks, and a 7" Pw S82°W 15 lks, all of which are now obliterated.

In 1933, Maine shows this corner as a small open circle symbol on his Plat of Survey filed as B-2441 in Oneida County records, and also notes that he found one old BT 7" Pw and an old stake on bank of road, but no new post set or ties indicated.

In 1997, J. Bandow/Genisot & Associates, Inc. found and accepted a 3/4" dia. iron pipe at this corner location per his Plat of Survey filed as C-1374 in Oneida County records. It is likely that he also selected and marked the older BTs that I found, at the time the survey was performed. No other corner evidence was observed or detected within 1/2 chain of the corner.

This corner recovery completed July 9, 1998; there were no witnesses.

Plan view map of monument location with bearing and distance ties to a minimum of four(4) described witness or reference monuments of concrete, natural stone, iron, live bearing trees or equivalent material. If applicable, also show a minimum of two(2) bearing and distance ties to any other monument found and not accepted; including the bearing and distance from the accepted monument. Indicate the basis for bearings of reference ties if not referenced to magnetic north.



**WITNESS MONUMENT TIES:**

- ① Old BT 8" Aspen N32°E 38.37'.
- ② Old BT 15" Pj S68°E 84.27'.
- ③ New BT 5" Aspen S24°W 22.78'.
- ④ Old BT 11" Bw S71°W 58.56'.
- ⑤ Old BT 10" Aspen N22°W 24.38'.

Note: Rusting 60d spikes found in left face root crown of older SE Pj BT and in the right face root crowns of NE, SW and NW older BTs; which I did not use in lieu of my standard PK nail and washer tie points.

SCALE: 1" = 40'

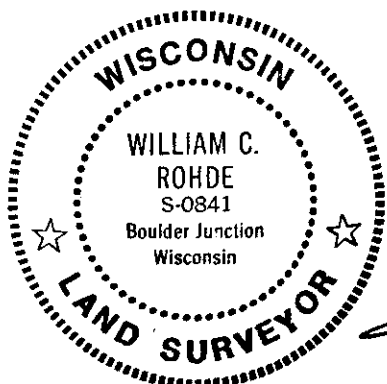
Unless otherwise indicated, all bearing tree ties are to a .25" dia. by 2.5" long PK nail with a 1.25" dia. steel washer driven into unblazed right face and a .25" dia. by 2.5" long PK nail with a 2" dia. steel washer stamped 'BT' is also driven into unblazed face of bearing tree at DBH; the basis for measured bearings is magnetic to nearest degree and all tie distances are horizontal measure to nearest 1/100th feet.

**LAND SURVEYOR CERTIFICATION:**

I, William C. Rohde, hereby certify that I am a duly licensed Professional Land Surveyor in Wisconsin, that this USPLS monument location was determined by me or under my direction and control, and that this U.S. Public Land Survey Monument Location Record is true and correct to the best of my knowledge and belief.

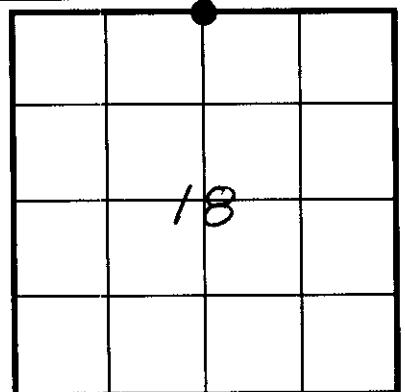
*William C. Rohde* Date: 7-13-98  
Signature

This form is intended to fulfill requirements of Chapter A-E 7.08 (3)(a)(b)(c)(d)(e)(f)(g)(h)(i) U.S. Public Land Survey Monument Location Record, Wisconsin Administrative Code. Use reverse side for geodetic location data and/or continuation purposes.



RLS SEAL

SHEET NO. 1 OF 1



**SECTION LOCATION MAP**

INDEX NO. J 3

3709 07 00 20

INDEX NO. J 3

JUN 12 2023

KYLE J. FRANSON  
REGISTER OF DEEDS

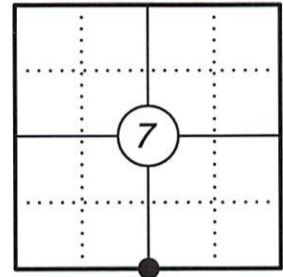
### U.S. PUBLIC LAND SURVEY MONUMENT RECORD

This form is intended and designed to fulfill all requirements of Wisconsin Administrative Code, Chapter A-E 7.08 U.S. Public Land Survey Monument Record (3) (a)(b)(c)(d)(e)(f)(g)(h)(i). An additional sheet may be added if necessary to confirm with said requirements.

**(a) Corner Location:**

S 1/4 Corner Section 7  
Township 37 North  
Range 7 East  
Town of Cassian  
County of Oneida

Corner ID: 3707070020



**(b) History of Original Corner:**

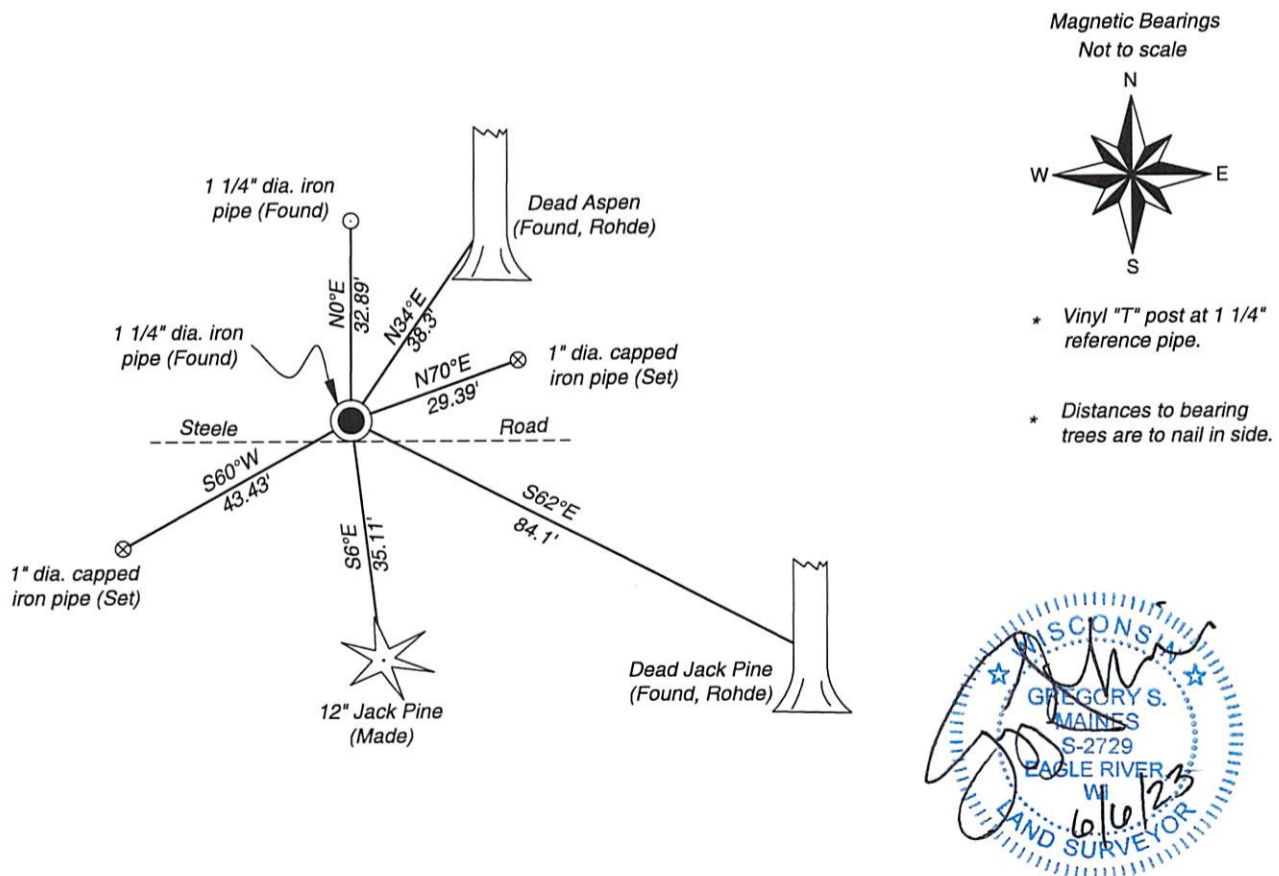
Original Surveyor: Joesph H Jenkins      Original B.T.'s: 7" White Pine N61°W 13 lks  
Date of Survey: Nov 1862                      7" White Pine S82°W 15 lks

**(f)(g)(h) Description of monument found at this corner and if it was accepted, state all evidence (material, testimonial, occupational, plats, records, other monuments) used as a basis for establishing location. If reestablishing through lost corner proportionate methods, indicate all monuments, distances, and directions used to establish. Indicate type of monument and sign post found or set.**

For corner history, see previous U.S. Public Land Survey Monument Record by William C Rohde dated July 7th, 1998.

04/25/2023 - I found and accepted a 1 1/4" iron pipe 3' north of the centerline of Steele RD at the corner location and also found two of Rohde's bearing trees dead. I made one bearing tree, set two capped iron pipes and used a 1 1/4" iron pipe of unknown origin for references and witnessed the corner out as shown below.

**(c)(d)(e) Plan view of corner with ties to at least four witnesses. If in disagreement with previously established corner, show the distances between the two corners and also indicate the tie to the disputed corner.**



**Certification**

I, Gregory S. Maines, Professional Land Surveyor No. 2729, hereby certify that the corner location on this record was referenced by me or under my direction and control and that this U.S. Public Land Survey Monument Record is complete to the best of my knowledge and belief. REF: 2023131

Index No.: J-3