

U.S. PUBLIC LAND SURVEY MONUMENT RECORD

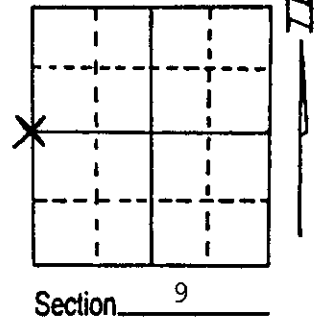
Note: This form is intended and designed to fulfill all requirements of Wisconsin Administrative Code, Chapter A-E 7.08 U.S. Public Land Survey Monument Record (3) (a) (b) (c) (d) (e) (f) (g) (h) (i). An additional sheet may be added if necessary to conform with said requirements.

(a) Corner location: Township 37 North

Range 7 East/West

Town/City/Village Cassian

County Oneida



(b) (f) (g) (h) Description of monument found at this corner and if it was accepted, state all evidence (material, testimonial, occupational, plats, records, other monuments) used as a basis for accepting. If not accepted or if nothing was found, state evidence used as basis for establishing location. If reestablished through lost corner proportionate methods, indicate all monuments, distances and directions used to establish.

November 1862, Joseph H. Jenkins set post for 1/4 corner to sections 8 and 9:

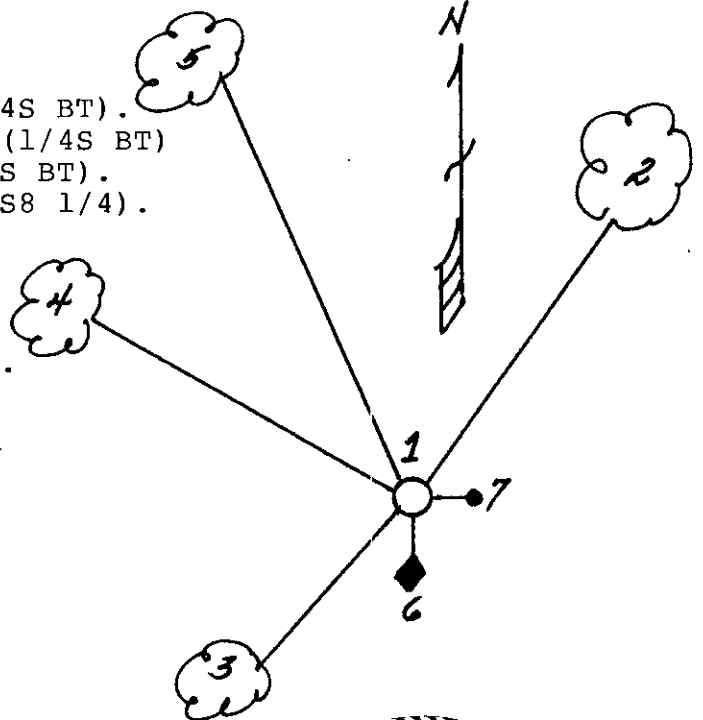
- 7" Y. Pine, N34°E, 12 Links (7.92')
- 15" Y. Pine, N29°W, 21 Links (13.86')
- 6/18/57, Marlowe Burgy (S-432) found, large White Pine stump with "OBT" on SE face, and set 2 1/2" galv. iron pipe with B.C:
- 19" W. Pine, S10°W, 61.0' (now dead - 1988)
- 16.6" W. Pine, N27°W, 76.9' (scribed "S8 1/4" in stump blaze).
- 5/12/88, Milo E. Stefan found: 1" x 24" iron pipe with Owens-Illinois Cedar post along side. Hole where Burgy monument was placed bears N27°W, 7.5 Feet.

I agree that the Burgy monument was not set from the original Yellow Pine BT, to the NW. I, therefore, accept the iron pipe and placed the county monument there.

(c) (d) (e) Plan view of corner with ties to at least 4 witness monuments. If in disagreement with previously established corner, show the distances between the two corners and also indicate the ties to the disputed corner.

1. Oneida County aluminum monument.
2. 8" Red Maple, N20°E, 50.59 Feet (1/4S BT).
3. 5" Black Spruce, S49°W, 38.07 Feet (1/4S BT)
4. 6" Tamarack, N73°W, 45.29 Feet (1/4S BT).
5. 26" White Pine, N27°W, 84.39 Feet (S8 1/4).
6. O-I Cedar post, south, 1.0 Feet.
7. Plastic sign post, East, 1.0 Feet.

(Scribed accordingly)
Distances to nail in side of trees.



(i) I, Milo E. Stefan
(type or print name) certify that the corner location on this record was determined by me or under my direction and control and that this U.S. Public Land Survey Monument Record is correct and complete to the best of my knowledge and belief.

Milo E. Stefan May 12, 1988
Signature Date



Index No. G-9

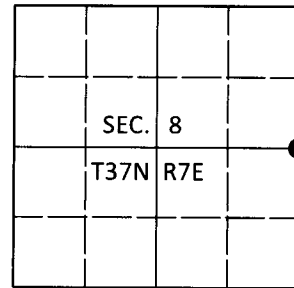
3707082000

U.S. PUBLIC LAND SURVEY MONUMENT RECORD

Note: This form is intended and designed to fulfill all requirements of Wisconsin Administrative Code, Chapter A-E 7.08 U.S. Public Land Survey Monument Record (3)(a-i).

(a) CORNER LOCATION
 1/4 Cor. of Secs. 8 & 9
 Township 37 North
 Range 7 East of the 4th P.M.
 Town of Cassian
 County of Oneida

WISCORS - Oneida County
 N: 191,081.66 USft
 E: 207,843.21 USft
 Datum: NAD 83(2011)
 GNSS Method: RTN - Direct
 GNSS Control: WISCORS VRS



(b) HISTORY OF ORIGINAL CORNER ESTABLISHMENT

Original Surveyor: _____ Original Accessories: _____
 Date of Survey Commenced: _____ See previous monument record(s)
 Completed: _____

(b)(f)(g)(h) Description of monument found at this corner and if it was accepted, state all evidence (material, testimonial, occupational, plats, records, other monuments) used as a basis for accepting. If not accepted or if nothing was found, state evidence used as basis for establishing location. If re-established through lost corner proportionate methods, indicate all monuments, distances and directions used to establish. Indicate type of monument and sign post found or set.

This is a perpetuation of the following monument record(s) that comprise a complete history of the corner:

May 12, 1988: USPLS Monument Record No. 3707082000 by Milo E. Stefan, PLS

Jan. 7, 2020: I found and accepted the record monument, a 2.4" diam. aluminum pipe with a 3.3" diam. Oneida Co. aluminum cap projecting 4" above the ground surface. The record bearing tree at S49°W is standing dead. The record bearing tree at N73°W is gone. I found or established accessories as shown below. I found a white vinyl sign post bearing East, 1.0 ft.

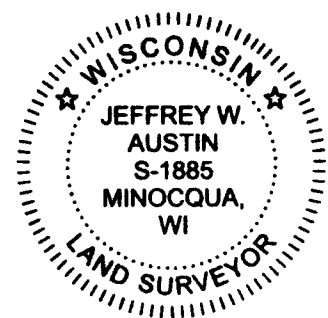
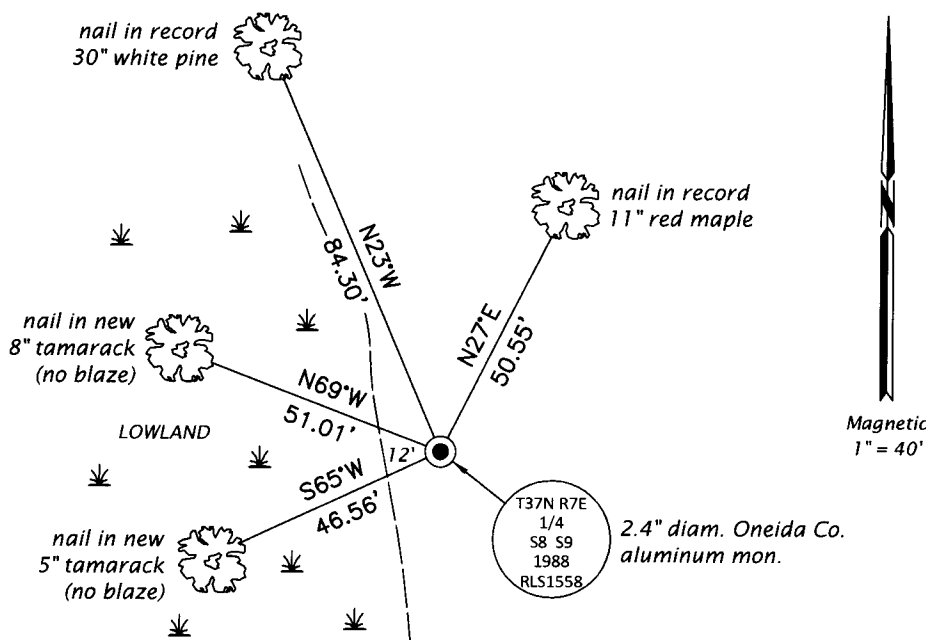
The coordinate value shown has been verified by at least one of the following methods: 1) comparison to a previously GPS determined published value; 2) the value is the average of two or more GPS observations at a markedly different time; 3) one or more distances were measured back to the GPS observed corner from temporary GPS observed offset locations.

REGISTER OF DEEDS OFFICE
 ONEIDA COUNTY
 FILED

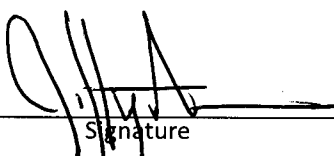
JUN 26 2020

KYLE J. FRANSON
 REGISTER OF DEEDS

(c)(d)(e) Plan view of corner with ties to at least 4 witness monuments. If in disagreement with previously established corner, show the distances between the two corners and also indicate the ties to the disputed.



(i) I, Jeffrey W. Austin, Professional Land Surveyor No. S-1885, hereby certify that the corner location on this record was determined by me or under my direction and control and that this U.S. Public Land Survey Monument Record is correct and complete to the best of my knowledge and belief.


 Signature

JUN 5, 2020
 Date