

At \_\_\_\_\_ O'Clock \_\_\_\_\_ M  
**THOMAS H. LEIGHTON**  
REGISTER OF DEEDS

This form is intended to fulfill the requirements of Chapter A-E7.08 (3)(a) thru (i) U.S. Public Land Survey Monument Location Record, Wisconsin Administrative Code. Use the reverse side of form for continuation.

**U.S. PUBLIC LAND SURVEY MONUMENT LOCATION RECORD**

Recorders Data

USPLS CORNER: **EAST WITNESS MC** SECTION: **16** TOWNSHIP: **37** NORTH RANGE: **7** EAST  
NAME OF WATERWAY FOR M.C. CORNER : **HORSEHEAD LAKE WEST** SECTION LINE: **NORTH**  
~~(CITY)(VILLAGE)(TOWN)~~ OF: **CASSIAN** COUNTY OF: **ONEIDA**

Description of monument found or placed and all other evidence used as the basis for monument location; including monuments and measurements required if the corner location was reestablished by lost corner proportionate methods. Also indicate name of the original surveyor, original survey date and the corner monument, bearing trees, witness or other reference monuments established, including measured bearing and distance ties, from available survey records.

In November 1862, Joseph H. Jenkins/GLO set a wood post as original MC and noted OBTs: an 8" Bw N30°E 28 links and a 10" Bw S12°W 8 links; all now obliterated.

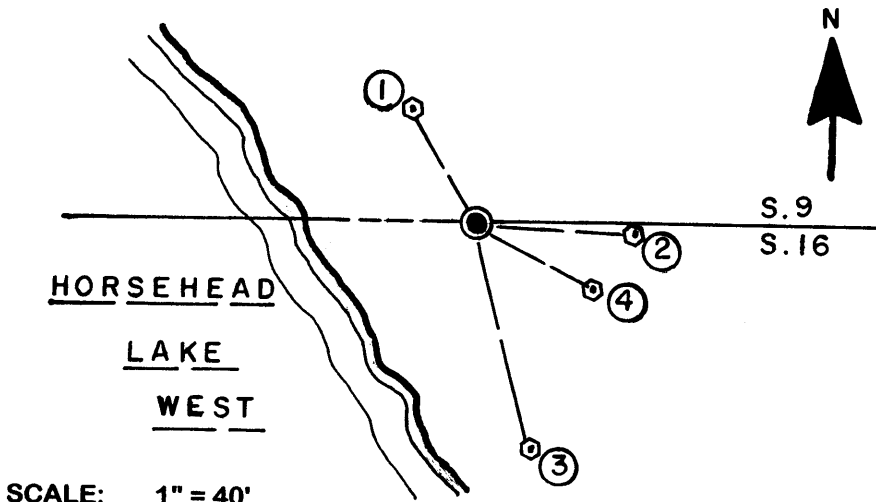
In August 1982, David F. McMullen/RLS 1340, found a 1.25" dia. iron pipe at this Witness MC and noted a 24" Pw BT N27°W 26.1' per Plat of Horsehead filed in Oneida County records.

In May 1984, David F. McMullen/RLS 1340, notes an iron pipe found at this Witness MC and same 24" Pw BT per Certified Survey Map No. 1059/1059A filed in Oneida County records.

On June 29, 2006 I found an old 1.25" dia. iron pipe OK with uncapped top 21" above grade at Easterly edge of a cleared and improved lakeshore lot to the West and the old 24" Pw BT per above records with lower face blaze nearly shut. I carefully pulled the old 52" long iron pipe and drove a standard 2" dia. x 30" long aluminum pipe monument with stamped Oneida County cap into the soil cavity left by the old iron pipe to 5" above grade. The corner falls 31'+/- East of existing lakeshore line at OHWM bearing S30°E.

I set a standard white poly 'T' marker post N65°E 7.3' as refusal below grade nearer to monument. There were no direct witnesses.

Plan view map of monument location with bearing and distance ties to a minimum of four(4) described witness or reference monuments of concrete, natural stone, iron, live bearing trees or equivalent material. If applicable, also show a minimum of two(2) bearing and distance ties to any other monument found and not accepted; including the bearing and distance from the accepted monument.



SCALE: 1" = 40'

**WITNESS MONUMENT TIES:**

- ① Old 24" Pw BT N30°W 27.37'.
- ② New 9" Mr BT of clump of four at S88°E 33.60'.
- ③ New 18" Hemlock BT S15°E 48.70' to PK/W in right face 41" above grade.
- ④ New 10" Hemlock BT S63°E 28.51' to PK/W in left face 20" above grade.

Unless otherwise indicated, all bearing tree ties are to a .25" dia. by 2.5" long PK nail with a 1.25" dia. steel washer driven into unblazed right face and a .25" dia. by 2.5" long PK nail with a 2" dia. steel washer stamped BT is also driven into unblazed face of bearing tree at DBH; the basis for measured bearings is by compass to nearest degree and all tie distances are measured horizontal by steel tape corrected to nearest 1/100th feet at standard temperature of 68° F.

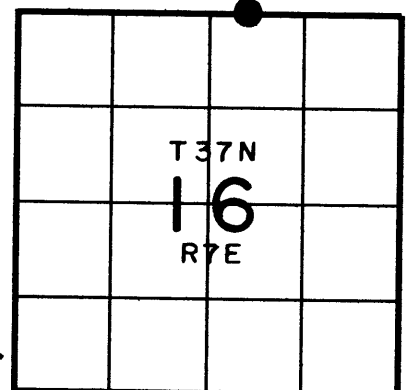
RLS SEAL:



**LAND SURVEYOR CERTIFICATE:**

I, William C. Rohde, hereby certify that I am duly licensed as a Professional Land Surveyor in the State of Wisconsin; that this USPLS monument location was determined by me and/or under my direct supervision and control; and that this U.S. Public Land Survey Monument Location Record is true and correct to the best of my knowledge and belief.

Signed: *William C. Rohde*  
William C. Rohde RLS 841

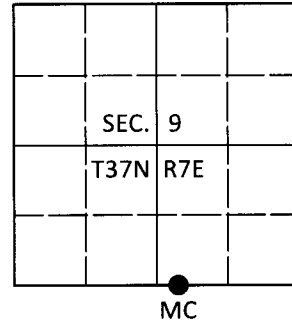


# U.S. PUBLIC LAND SURVEY MONUMENT RECORD

Note: This form is intended and designed to fulfill all requirements of Wisconsin Administrative Code, Chapter A-E 7.08 U.S. Public Land Survey Monument Record (3)(a-i).

(a) CORNER LOCATION  
 Meander Cor. of Secs. 9 & 16  
 Township 37 North  
 Range 7 East of the 4th P.M.  
 Town of Cassian  
 County of Oneida

WISCRS - Oneida County  
 N: 188,468.22 USft  
 E: 210,886.85 USft  
 Datum: NAD 83(2011)  
 GNSS Method: RTN - Direct  
 GNSS Control: WISCORS VRS



(b) HISTORY OF ORIGINAL CORNER ESTABLISHMENT

Original Surveyor:

Original Accessories:

Date of Survey Commenced:  
 Completed:

See previous monument record(s)

(b)(f)(g)(h) Description of monument found at this corner and if it was accepted, state all evidence (material, testimonial, occupational, plats, records, other monuments) used as a basis for accepting. If not accepted or if nothing was found, state evidence used as basis for establishing location. If re-established through lost corner proportionate methods, indicate all monuments, distances and directions used to establish. Indicate type of monument and sign post found or set.

*This is a perpetuation of the following monument record(s) that comprise a complete history of the corner:*

*Nov. 20, 2006: USPLS Monument Record No. 3707090017 by William C. Rohde, PLS*

*Jan. 7, 2020: I found and accepted the record monument, a 2.4" diam. aluminum pipe with a 3.3" diam. Oneida Co. aluminum cap projecting 6" above the ground surface. I found or established accessories as shown below. I found a white vinyl sign post bearing N65°E, 7.3 ft.*

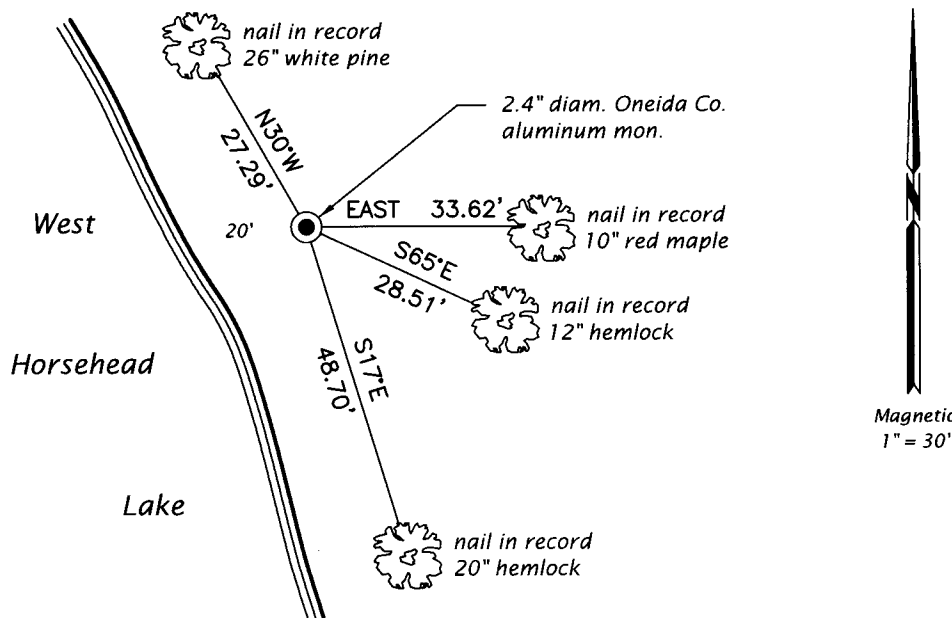
*The coordinate value shown has been verified by at least one of the following methods: 1) comparison to a previously GPS determined published value; 2) the value is the average of two or more GPS observations at a markedly different time; 3) one or more distances were measured back to the GPS observed corner from temporary GPS observed offset locations.*

REGISTER OF DEEDS OFFICE  
 ONEIDA COUNTY  
 FILED

JUN 26 2020

KYLE J. FRANSON  
 REGISTER OF DEEDS

(c)(d)(e) Plan view of corner with ties to at least 4 witness monuments. If in disagreement with previously established corner, show the distances between the two corners and also indicate the ties to the disputed.



(i) I, Jeffrey W. Austin, Professional Land Surveyor No. S-1885, hereby certify that the corner location on this record was determined by me or under my direction and control and that this U.S. Public Land Survey Monument Record is correct and complete to the best of my knowledge and belief.

*[Handwritten Signature]*  
 signature

JUN 5, 2020  
 Date

3707090017 (INDEX NO. J-11,12)