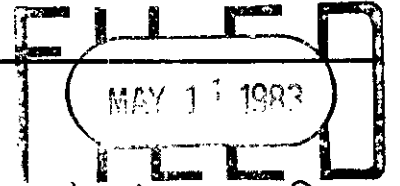


REG-150-11 (9/1/66)

CERTIFIED LAND CORNER RESTORATION
U.S. PUBLIC LAND SURVEY MONUMENT RECORD



At 4:15 O'Clock P.M.
DORIS VERAGE KUEHN
REGISTER OF DEEDS

State of Wisconsin }
County of Oneida } ss.

I JEROME N. KRAEMER, do hereby certify that on the 15th day of October, 1975, I found evidence of the East Meander Corner corner of Sections 10 and 15 Township 37 North, Range 7 East, Fourth Principal Meridian, as described hereon; and that from this evidence I established a new monument and accessories as described hereon to perpetuate the original location of this corner:

Description of original monument and accessories and subsequent restorations:

Original Government corner, established a wood post in 1862 by Joseph H. Jenkins Government Deputy Surveyor.
From County survey records: D. H. Vaughn found Allen's post and bearing trees in 1911. From County survey records; V. Maine found Allen's perpetuation of original Government meander corner. Maine set new oak stake and marked new bearing trees:
Birch 10" S30°E, 15
Birch 8" N23°E, 25
Black Oak 5" N28°E, 10-1/2
White Pine 10" S19°E, .49

Description of corner evidence found:

Found 1-1/4 inch rebar protruding 4 inches above ground level.
Wood Post with W.C.D. location tag bears East 1 foot.
Old barbed wire fence runs Easterly.
Bearing trees found:
31" White Pine, N20°W, 20.3 feet (Allen)
13" Oak N28°E, 5.7 feet (Maine)
16" White Pine stump S20°E, 33.0 feet (Maine)

Description of monument and accessories I established to perpetuate the location of this corner:

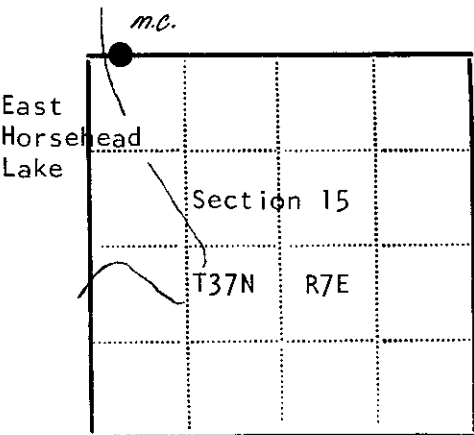
July 21, 1981

Established new bearing trees, 1 blazed, scribed and set P.K. Nails in the following trees:
9" Maple S3°E, 5.57 feet
10" White Birch S50°E, 14.36 feet
9" Oak N74°E, 14.53 feet

Corner is 3 feet East of Horsehead Lake.

Compared with all record data & accepted as correct.

Robert H. Kival
Oneida County Surveyor 27 Apr 1983



● - Corner monument restored
□ -

Resident witnesses.....

Dated at Minocqua Wisconsin, this 5th day of January 1983.

Signature *Jerome N. Kraemer* Title Reg. Land Surveyor
(County Surveyor, Registered Land Surveyor, or other duly authorized official)

Surveyors Registration No. S-1448

Office of..... County of.....

I hereby certify that the within instrument was filed in this office for record on the..... day of..... 19....., and was filed in Book No..... Page No..... of County Records.

Signature..... Title.....

Township 37 North, Range 7 East, Section....., Index No....., Page No.....

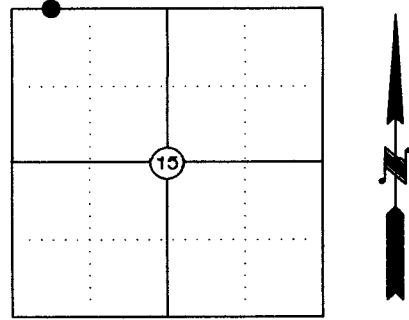
3707100038

2-13

U.S PUBLIC LAND SURVEY MONUMENT RECORD

Note: This form is intended and designed to fulfill all requirements of Wisconsin Administrative Code, Chapter A-E 7.08 U.S. Public Land Survey Monument Record (3) (a) (b) (c) (d) (e) (f) (g) (h) (i). An additional sheet may be added if necessary to conform to said requirements.

(a) Corner location: Township 37 North
 Range 7 East
 Town/City/Village Cassian
 County Oneida



Meander Corner

(b) (f) (g) (h) Description of monument found at this corner and if it was accepted, state all evidence (material, testimonial, occupational, plats, records, other monuments) used as a basis for accepting. If not accepted or if nothing was found, state evidence used as basis for establishing locations. If reestablished through lost corner proportionate methods, indicate all monuments, distances and directions used to establish. Indicate type of monument found or set and sign post.

See USPLS Monument Record by Jerome N. Kraemer dated 5th day of January, 1983 and accepted by Robert Winot (Oneida County Surveyor) on 27 April, 1983 for some corner history.

The following Certified Survey Maps also reference this corner: Volume 6 / Page 1647; Volume 7 / Page 1792 and Volume 8 / Page 2023. All references are to a 1 1/4" Iron Bar (rebar) as does the USPLSM Record by Kraemer. This is different than the GPS records at Oneida County which calls for a 1" Iron Pipe with a cap.

On December 5, 2019, I found the 1 1/4" iron bar with 3 existing BT's. I establish 1 more BT's as shown below.

(c) (d) (e) Plan view of corner with ties to at least 4 witness monuments. If in disagreement with previously established corner, show the distances between the two corners and also indicate the ties to the disputed corner.

Scale: 1" = 10'

- 1) Meander Corner between section 10 & 15
1 1/4" iron bar.

BT's per USPLSMR by Kraemer (found):

- 2) 9" Maple with PK nail
- 3) 10" White Birch with PK nail
- 4) 9" Oak with PK nail

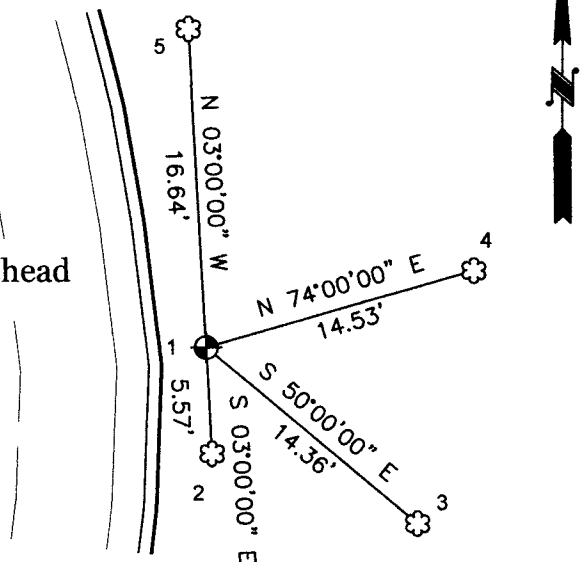
- 5) New BT - 6" Oak with PK nail

REGISTER OF DEEDS OFFICE
ONEIDA COUNTY
FILED

OCT 23 2020

KYLE J. FRANSON
REGISTER OF DEEDS

East
Horsehead
Lake



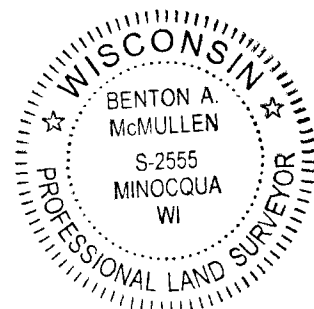
NOTES

- 1) All bearings shown are compass
- 2) All found BT's are shown as recorded.
- 3) New BT measured to PK nail on side.

(i) I, Benton A. McMullen certify that the corner location on this record was determined by me or under my direction and control and that this U.S. Public Land Survey Monument Record is correct and complete to the best of my knowledge and belief.

Benton A. McMullen
 Signature

January 16, 2020
 Date



3707100038
 J 13-14