

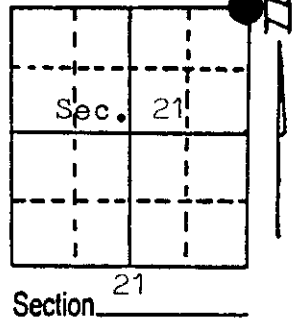
U.S. PUBLIC LAND SURVEY MONUMENT RECORD

Note: This form is intended and designed to fulfill all requirements of Wisconsin Administrative Code, Chapter A-E 5.02, U.S. Public Land Survey Monument Record (3) (a) (b) (c) (d) (e) (f) (g) (h) (i). An additional sheet may be added if necessary to conform with said requirements.

(a) Corner location: Township 37 North
 Range 7 East ~~West~~

Town/City/Village Cassian

County Oneida



(b) (f) (g) (h) Description of monument found at this corner and if it was accepted, state all evidence (material, testimonial, occupational, plats, records, other monuments) used as a basis for accepting. If not accepted or if nothing was found, state evidence used as basis for establishing location. If reestablished through lost corner proportionate methods, indicate all monuments, distances and directions used to establish. Original survey Joseph H. Jenkins in 1862.
 W.Pine 12, S20W, 40 lks., Tam 12, S29E, 6 lks., Tam 8, N61E, 15 lks.
 Tam 8, N20W, 28 lks. North 5 ch. enter swamp, West 2.5 ch. enter swamp.

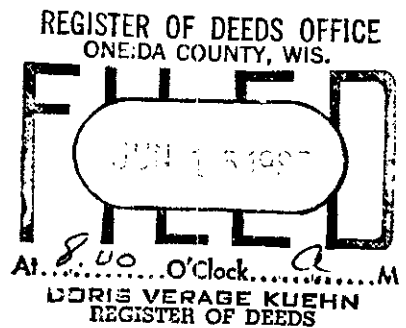
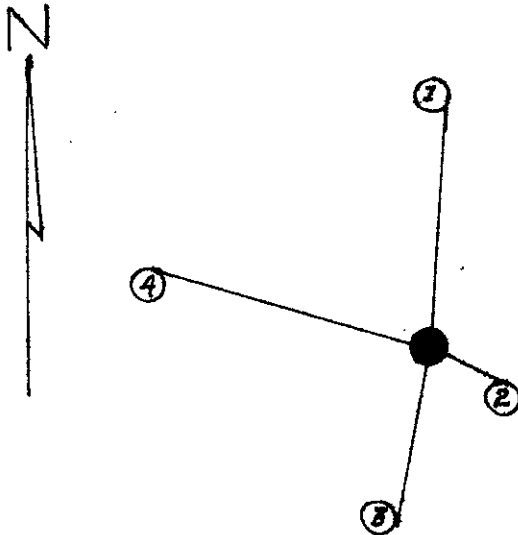
V.M. Main (See Main's book page 114) on Oct. 8, 1936 monumented corner. He used Ira Smiyh's identification and a old square stake as evidence. Marked new B.T.'s. W.Pine stub 12, S3W, 36 lks. W.Pine stp. 10, N65W, 50½ lks. W.Pine stp. 10, S01W, 70½ lks.

June 12, 1987; I found county monument. Main's records show Oct. 1936 but monument is stamped 1937.

I blazed and scribed the following new bearing trees and set 6 penny galvanized nails in the sides of the trees as indicated in the sketch.

1. Maple 9", N5E, 26.20 ft.
 2. white Birch 11", S65E, 9.07 ft.
 3. white Birch 6", S11°, 19.19 ft.
 4. Aspin 7", N74W, 30.17
- Set Witness post 6" NW of Monument.

(c) (d) (e) Plan view of corner with ties to at least 4 witness monuments. If in disagreement with previously established corner, show the distances between the two corners and also indicate the ties to the disputed corner.



(i) I, Jean F. Resvick, RLS - 3-802
 (type or print name) certify that the corner location on this record was determined by me or under my direction and control and that this U.S. Public Land Survey Monument Record is correct and complete to the best of my knowledge and belief.

Jean F. Resvick 6-17-87
 Signature Date



Index No. N-13

3707160000

U.S. PUBLIC LAND SURVEY MONUMENT RECORD

REGISTER OF DEEDS OFFICE
ONEIDA COUNTY
FILED

Note: This form is intended and designed to fulfill all requirements of the Wisconsin Administrative Code, Chapter A-E 7.08 U.S. Public Land Monument Record (3)(a)(b)(c)(d)(e)(f)(g)(h)(i). An additional sheet may be added if necessary to conform with said requirements.

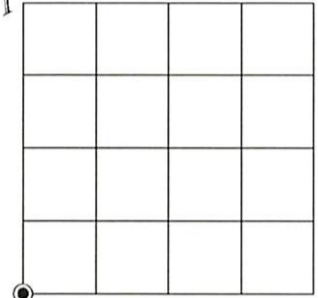
MAY 05 2021

KYLE J. FRANSON
REGISTER OF DEEDS

(a) CORNER LOCATION: WISCRS - Oneida County
 Southwest Corner of Section 15 North: 183160.795 USft
 Township 37 North East: 213141.501 USft
 Range 7 East Datum: NAD 83 (2011)
 Town of Cassian GNSS Method: RTK - Direct
 County of Oneida GNSS Control: WISCRS VRS
 Record North: 183160.953 USft
 Record East: 213141.515 USft
 Record Datum: NAD 83 (1991)

(RECORDING AREA)

SECTION 15



(b) HISTORY OF ORIGINAL CORNER ESTABLISHMENT

Original Surveyor:
 Date of Survey: Commenced
 Completed
 Original B.T.'S

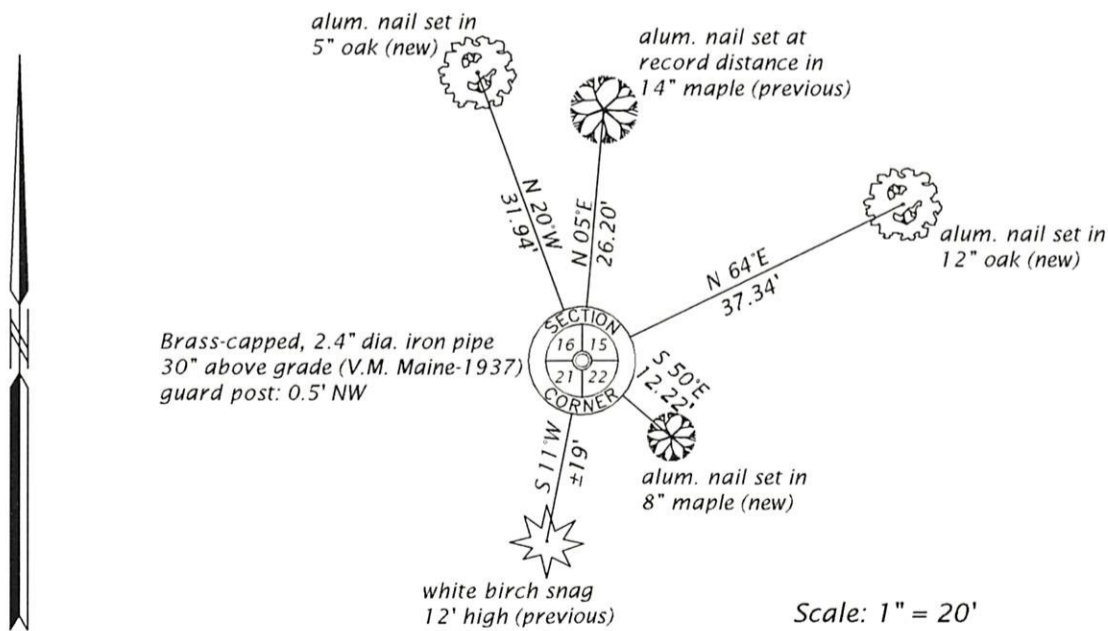
SEE PREVIOUS U.S.P.L.S. MONUMENT
 RECORD DATED JUNE 12, 1987.

(f)(g)(h) DESCRIPTION OF MONUMENT FOUND AT THIS CORNER AND IF IT WAS ACCEPTED, STATE ALL EVIDENCE (MATERIAL, TESTIMONIAL, OCCUPATIONAL, PLATS, RECORD, OTHER MONUMENTS) USED AS A BASIS FOR ESTABLISHING LOCATION. IF NOT ACCEPTED OR IF NOTHING WAS FOUND, STATE EVIDENCE USED AS BASIS FOR ESTABLISHING LOCATION. IF REESTABLISHED THROUGH LOST CORNER PROPORTIONATE METHODS, INDICATE ALL MONUMENTS, DISTANCES AND DIRECTIONS USED TO ESTABLISH. INDICATE TYPE OF MONUMENT AND SIGN POST FOUND OR SET.

This is a perpetuation of a previous U.S.P.L.S. Monument Record by Jean F. Resvick, RLS, dated June 12, 1987, and filed in the office of the Oneida County Register of Deeds. A complete history of the corner can be found on the previous monument record. I accept the previous location as a true and faithful perpetuation or reestablishment of the original corner location and further perpetuate it as follows.

March 24, 2021, we found, and I accepted the brass-capped iron pipe Resvick had on the previous monument record. Resvick's northwesterly aspen and southeasterly white birch are now gone. His southwesterly white birch is now standing dead, 12' high. See below for updated reference ties.

(c)(d)(e) PLAN VIEW OF CORNER WITH TIES TO AT LEAST 4 WITNESS MONUMENTS. IF IN DISAGREEMENT WITH PREVIOUSLY ESTABLISHED CORNER, SHOW THE DISTANCE BETWEEN THE TWO CORNERS AND ALSO INDICATE THE TIES TO THE DISPUTED CORNER.



(i) I, JAMES D. REIN, PROFESSIONAL LAND SURVEYOR NO. S-1234 HEREBY CERTIFY THAT THE CORNER LOCATION ON THIS RECORD WAS DETERMINED BY ME OR UNDER MY DIRECTION AND CONTROL AND THAT THIS U.S. PUBLIC LAND SURVEY MONUMENT RECORD IS CORRECT AND COMPLETE TO THE BEST OF MY KNOWLEDGE AND BELIEF.

James D Rein 4/26/21
 SIGNATURE DATE



INDEX NO. N - 13
 3707160000