

U.S. PUBLIC LAND SURVEY MONUMENT RECORD

Note: This form is intended and designed to fulfill all requirements of the Wisconsin Administrative Code, Chapter A-E 7.08 U.S. Public Land Monument Record (3)(a)(b)(c)(d)(e)(f)(g)(h)(i). An additional sheet may be added if necessary to conform with said requirements.

REGISTER OF DEEDS OFFICE
ONEIDA COUNTY
FILED

MAY 05 2021

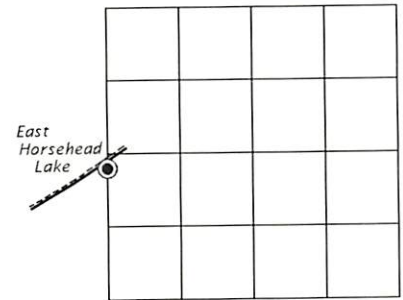
KYLE J. FRANSON
REGISTER OF DEEDS

(RECORDING AREA)

SECTION 15

(a) CORNER LOCATION:
Meander Corner of Section 15
Township 37 North
Range 7 East
Town of Cassian
County of Oneida

WISCORS - Oneida County
North: 185402.73 USft
East: 213084.75 USft
Datum: NAD 83 (2011)
GNSS Method: RTK - Offset traverse
GNSS Control: WISCORS VRS



(b) HISTORY OF ORIGINAL CORNER ESTABLISHMENT
Original Surveyor: Joseph H. Jenkins
Date of Survey: Commenced November 3, 1862
Completed November 15, 1862
Original B.T.'S: tamarac, 12", S 76°W, 26 lks., tamarac, 10", East, 25 lks.

(f)(g)(h) DESCRIPTION OF MONUMENT FOUND AT THIS CORNER AND IF IT WAS ACCEPTED, STATE ALL EVIDENCE (MATERIAL, TESTIMONIAL, OCCUPATIONAL, PLATS, RECORD, OTHER MONUMENTS) USED AS A BASIS FOR ESTABLISHING LOCATION. IF NOT ACCEPTED OR IF NOTHING WAS FOUND, STATE EVIDENCE USED AS BASIS FOR ESTABLISHING LOCATION. IF REESTABLISHED THROUGH LOST CORNER PROPORTIONATE METHODS, INDICATE ALL MONUMENTS, DISTANCES AND DIRECTIONS USED TO ESTABLISH. INDICATE TYPE OF MONUMENT AND SIGN POST FOUND OR SET.

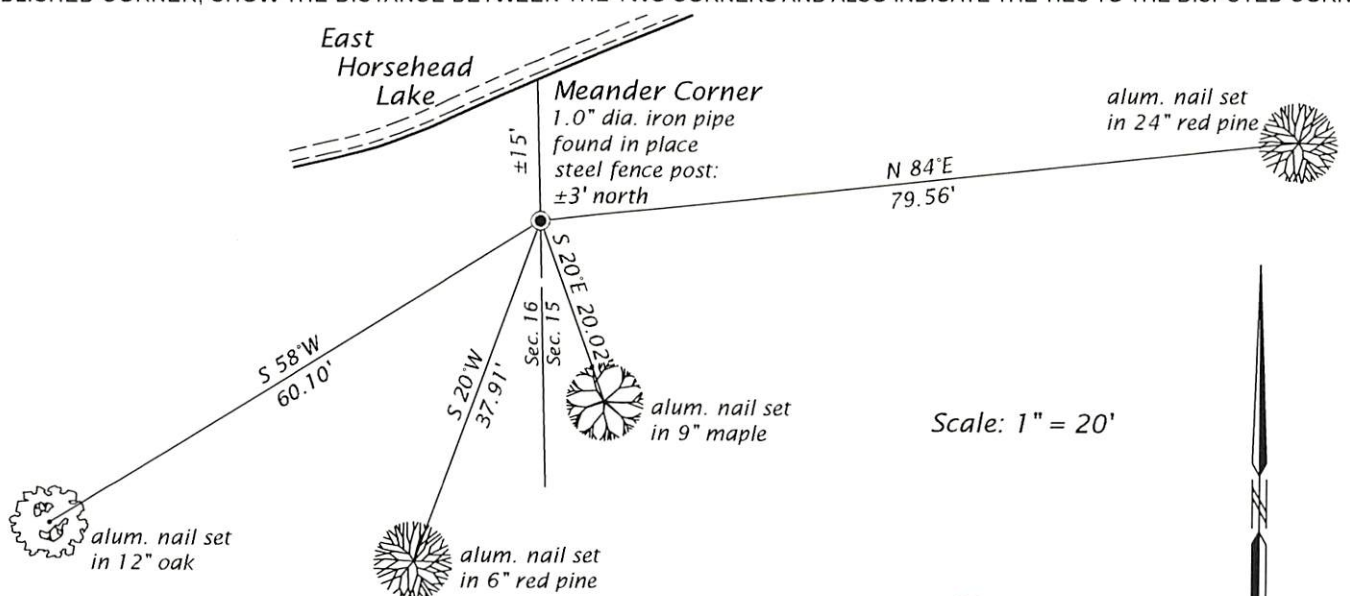
October 7, 1936 Vernon Maine, County Surveyor: Maine Field Book 1936, page 262 and transcribed in Maine Book 1, page 114; recovered a very old scribed cedar stake. No doubt this stake is Wm. Allens perpetuation of Orig. Govt. M.C. His old B.T. is plain Viz; N.P. (stp.) 20" East, 23 3/4 links. Stake was rotted to a string at ground surface. Put in new scribed oak stake and marked B.T.s Viz; W.P. stub 30", S 76°W, 76 1/4 links; W.P. stp. 30", East, 76 1/4 links.

January 7, 1963 Sy Poskie, RLS No. 140: Map of survey filed as B35 and B1825 in county survey records, identifies corner "WCD Meander Corner, legend as iron pipe.

October 28, 1975 James D. Rein, RLS No. 1234: Map of survey filed as B891 in county survey records, identifies corner monumented by a found 3/4" iron pipe, referenced by 30" pine stump (Maine) S 76°W, 50.3 feet.

December 16, 2020 James D. Rein, PLS No. 1234, we recovered, and I accepted a 1" outside diameter iron pipe in the same position as previously found by me in 1975. We made new reference ties to bearing trees as shown in the plan.

(c)(d)(e) PLAN VIEW OF CORNER WITH TIES TO AT LEAST 4 WITNESS MONUMENTS. IF IN DISAGREEMENT WITH PREVIOUSLY ESTABLISHED CORNER, SHOW THE DISTANCE BETWEEN THE TWO CORNERS AND ALSO INDICATE THE TIES TO THE DISPUTED CORNER.



(i) I, JAMES D. REIN, PROFESSIONAL LAND SURVEYOR NO. S-1234 HEREBY CERTIFY THAT THE CORNER LOCATION ON THIS RECORD WAS DETERMINED BY ME OR UNDER MY DIRECTION AND CONTROL AND THAT THIS U.S. PUBLIC LAND SURVEY MONUMENT RECORD IS CORRECT AND COMPLETE TO THE BEST OF MY KNOWLEDGE AND BELIEF.



SIGNATURE James D. Rein DATE 4/26/21

INDEX NO. L-M - 13
3707161800