

CERTIFIED LAND CORNER RESTORATION

State of Wisconsin }  
County of Oneida } ss.

I William E. Bandow, do hereby certify that on the 7th day of February, 1979, I found evidence of the West 1/4 corner of Section 24 Township 37 North, Range 7 East, Fourth Principal Meridian, as described hereon; and that from this evidence I established a new monument and accessories as described hereon to perpetuate the original location of this corner:

Description of original monument and accessories and subsequent restorations:

Corner set by J.H. Jenkins in Nov. 1862. North between 24 & 23 40.00 set post. BT's

Birch 8" S59W 24 l.  
B Oak 6" S89E 13 l.

Corner recovered by D.H. Vaughan in 1920.

Description of corner evidence found:

Brass capped iron pipe, three feet above ground.  
Corner set by Maine in June 1936 by proportionate measurement.

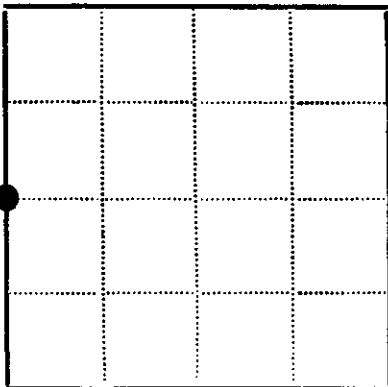
Description of monument and accessories I established to perpetuate the location of this corner:

Bearing trees;

1 1/2" White Pine, East 92.79'  
7" Maple, S 85°W 23.73'  
6" White Birch, S 5°E 10.52'



SEC. 24, T. 37 N., R. 7 E.



● - Corner monument restored  
□ -

Resident witnesses Mark Hendrickson, Mike Romportl

Dated at Rhinelander Wisconsin, this 17th day of October 1980

Signature William E. Bandow Title R.L.S.  
(County Surveyor, Registered Land Surveyor, or other duly authorized official)

Surveyors Registration No. 1182

Office of Register of Deeds County of Oneida

I hereby certify that the within instrument was filed in this office for record on the 11th day of June 1980, and was filed in Book No. \_\_\_\_\_ Page No. \_\_\_\_\_ of County Records.

Signature Doris Verage Kuehn Title Register of Deeds  
Cynthia A. Piro, Deputy

Township \_\_\_\_\_, Range \_\_\_\_\_, Section \_\_\_\_\_, Index No. \_\_\_\_\_, Page No. \_\_\_\_\_

P. 21

3707232000

# U.S. PUBLIC LAND SURVEY MONUMENT RECORD

REGISTER OF DEEDS OFFICE  
ONEIDA COUNTY  
FILED

Note: This form is intended and designed to fulfill all requirements of the Wisconsin Administrative Code, Chapter A-E 7.08 U.S. Public Land Monument Record (3)(a)(b)(c)(d)(e)(f)(g)(h)(i). An additional sheet may be added if necessary to conform with said requirements.

NOV 14 2022

KYLE J. FRANSON  
REGISTER OF DEEDS

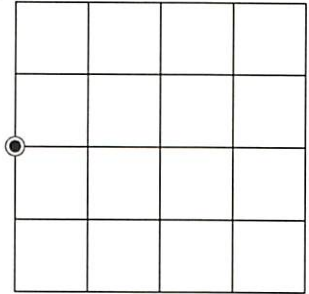
(a) CORNER LOCATION:

West 1/4 corner of Section 24  
Township 37 North  
Range 7 East  
Town of Cassian  
County of Oneida

North:  
East:  
Datum:  
GNSS Method:  
GNSS Control:

(RECORDING AREA)

SECTION 24



(b) HISTORY OF ORIGINAL CORNER ESTABLISHMENT

Original Surveyor:  
Date of Survey: Commenced  
Completed  
Original B.T.'S

*SEE PREVIOUS U.S.P.L.S. MONUMENT  
RECORD DATED JUNE 11, 1986.*

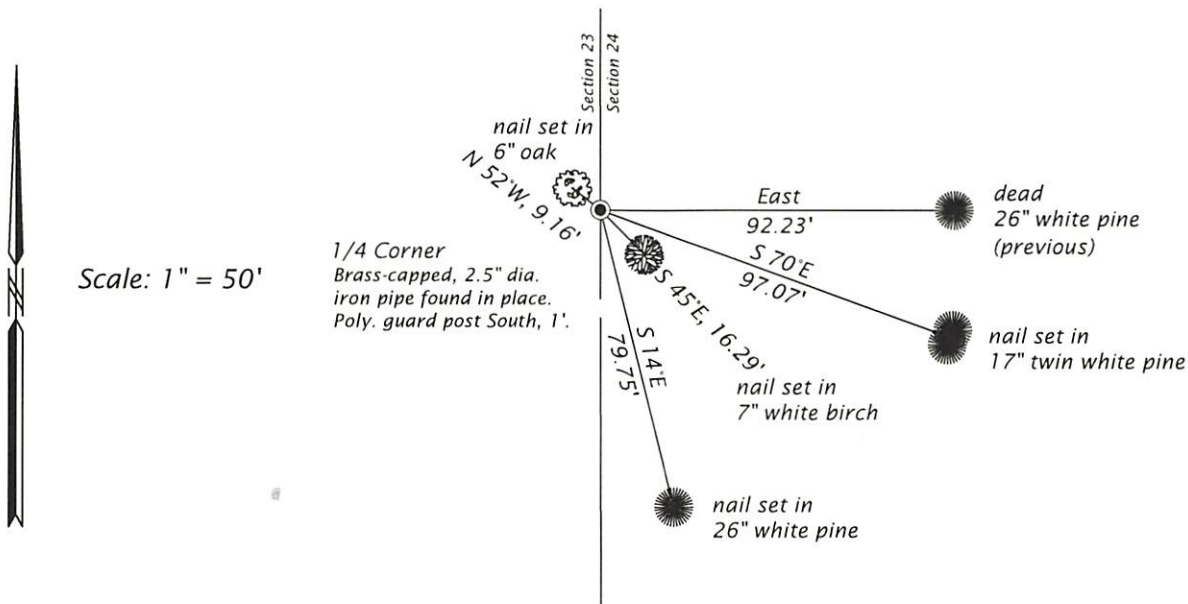
(f)(g)(h) DESCRIPTION OF MONUMENT FOUND AT THIS CORNER AND IF IT WAS ACCEPTED, STATE ALL EVIDENCE (MATERIAL, TESTIMONIAL, OCCUPATIONAL, PLATS, RECORD, OTHER MONUMENTS) USED AS A BASIS FOR ESTABLISHING LOCATION. IF NOT ACCEPTED OR IF NOTHING WAS FOUND, STATE EVIDENCE USED AS BASIS FOR ESTABLISHING LOCATION. IF REESTABLISHED THROUGH LOST CORNER PROPORTIONATE METHODS, INDICATE ALL MONUMENTS, DISTANCES AND DIRECTIONS USED TO ESTABLISH. INDICATE TYPE OF MONUMENT AND SIGN POST FOUND OR SET.

This is a perpetuation of a previous U.S.P.L.S. Monument Record by William E. Bandow, RLS, dated June 11, 1986, and filed in the office of the Oneida County Register of Deeds. A complete history of the corner can be found on the previous monument record.

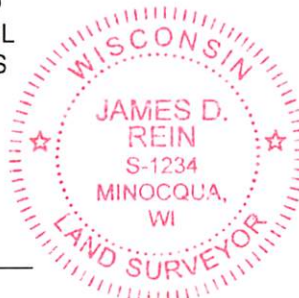
October 28, 2022, James D. Rein, PLS No. S-1234, we found and I accepted the brass-capped, 2.5" dia. iron pipe set by Maine in 1936, top leaning north  $\pm 0.5'$ , reset plumb. Bandow's southwesterly maple and southeasterly white birch are now gone. See below for updated references.

I accept the previous location as a true and faithful perpetuation or reestablishment of the original corner location and further perpetuate it as shown in the plan.

(c)(d)(e) PLAN VIEW OF CORNER WITH TIES TO AT LEAST 4 WITNESS MONUMENTS. IF IN DISAGREEMENT WITH PREVIOUSLY ESTABLISHED CORNER, SHOW THE DISTANCE BETWEEN THE TWO CORNERS AND ALSO INDICATE THE TIES TO THE DISPUTED CORNER.



(i) I, JAMES D. REIN, PROFESSIONAL LAND SURVEYOR NO. S-1234 HEREBY CERTIFY THAT THE CORNER LOCATION ON THIS RECORD WAS DETERMINED BY ME OR UNDER MY DIRECTION AND CONTROL AND THAT THIS U.S. PUBLIC LAND SURVEY MONUMENT RECORD IS CORRECT AND COMPLETE TO THE BEST OF MY KNOWLEDGE AND BELIEF.



*James D. Rein*  
SIGNATURE  
11/04/22  
DATE

INDEX NO. P - 21  
3707232000