



CERTIFIED LAND CORNER RESTORATION

State of Wisconsin }
County of Oneida } ss.

I William Immich, do hereby certify that on the 13th day of Dec., 1981, I found evidence of the North 1/4 corner of Section 25 Township 37 North, Range 7 East, Fourth Principal Meridian, as described hereon; and that from this evidence I established a new monument and accessories as described hereon to perpetuate the original location of this corner:

Description of original monument and accessories and subsequent restorations:

Jenkins
Joseph H. Jrukuis, Gov't Surveyor, 1862
East random between 24 & 25 var. 6 3/4
80.50 range line 7 south of post West corrected
40.25 set 1/4 post W. Pine 12 N 10 E 291k / Maple 7 S 61 E 221k
1920 D.H. Maine reset corner by proportionate measure (see book 8 P 164)
1960s Sy Poskie map (no date) shows corner in distance to 1/16 east 1325.5
also shows North South 1/4 line

Description of corner evidence found:

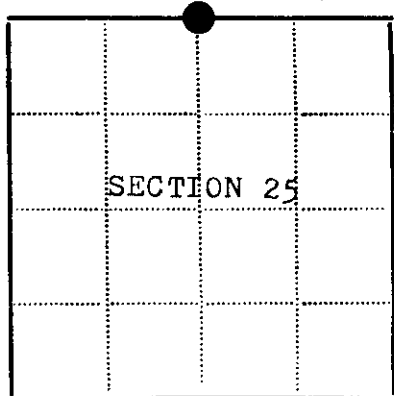
1968 Ivan Branham shows corner in by Maine (cannot find record of this being Maines corner) shows distance to 1/16th west 20.22 chains 1334.52'
1979 W. Immich found iron bar made bearing trees distance to 1/16 East 1324.48' fit Sy Poskie good
1981 W. Immich found iron bar distance to 1/16 West 1333.42' fit Branham distance good.

Description of monument and accessories I established to perpetuate the location of this corner:

found 1" iron bar in rock pile my old b.t.s in place
4" Norway Pine S 77 W 43.60'
6" W. Birch S 45 E 7.40'
14" Norway Pine N 76 E 57.81'
centerline dirt road South 30'
bearings mag. / distances to spike in side of tree



Corner data checked with record & accepted as correct
Robert H. Winkler, Oneida County Surveyor



● - Corner monument restored
□ -

Resident witnesses.....

Dated at Rhinelander Wisconsin, this 13th day of Dec. 1981.

Signature *William Immich* Title R.L.S.
(County Surveyor, Registered Land Surveyor, or other duly authorized official)

Surveyors Registration No. 1383

Office of Registrar of Deeds County of Oneida

I hereby certify that the within instrument was filed in this office for record on the 25th day of August 1982 and was filed in Book No. Page No. of County Records.

Signature *Doris Verage Kuehn* Title Registrar of Deeds

Township, Range, Section, Index No., Page No.

2-23

3707240020

U.S. PUBLIC LAND SURVEY MONUMENT RECORD

REGISTER OF DEEDS OFFICE
ONEIDA COUNTY
FILED

NOV 26 2018

KYLE J. FRANSON
REGISTER OF DEEDS

Note: This form is intended and designed to fulfill all requirements of the Wisconsin Administrative Code, Chapter A-E 7.08 U.S. Public Land Monument Record (3)(a)(b)(c)(d)(e)(f)(g)(h)(i). An additional sheet may be added if necessary to conform with said requirements.

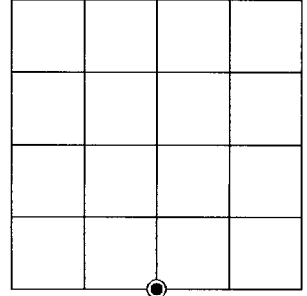
(a) CORNER LOCATION:

South Quarter Corner of Section 24
Township 37 North
Range 7 East
Town of Cassian
County of Oneida

North:
East:
Datum:
GNSS Method:
GNSS Control:

(RECORDING AREA)

SECTION 24



(b) HISTORY OF ORIGINAL CORNER ESTABLISHMENT

Original Surveyor:
Date of Survey: Commenced
Completed
Original B.T.'S

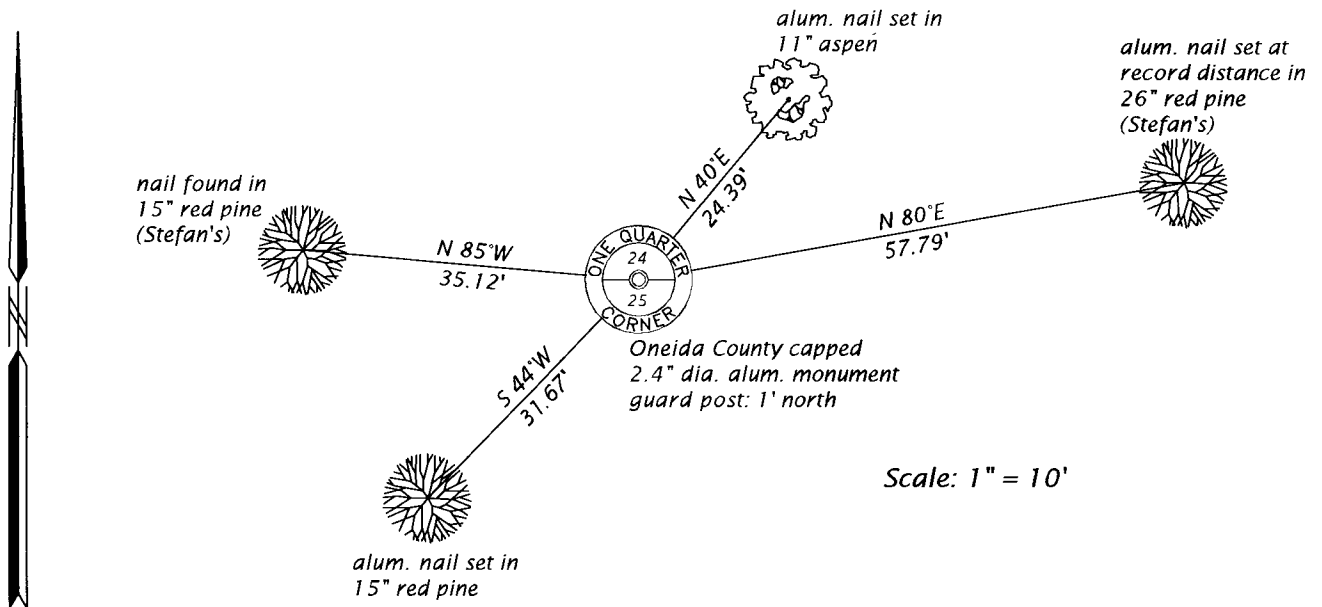
*SEE PREVIOUS U.S.P.L.S. MONUMENT
RECORD DATED NOVEMBER 30, 1987.*

(f)(g)(h) DESCRIPTION OF MONUMENT FOUND AT THIS CORNER AND IF IT WAS ACCEPTED, STATE ALL EVIDENCE (MATERIAL, TESTIMONIAL, OCCUPATIONAL, PLATS, RECORD, OTHER MONUMENTS) USED AS A BASIS FOR ESTABLISHING LOCATION. IF NOT ACCEPTED OR IF NOTHING WAS FOUND, STATE EVIDENCE USED AS BASIS FOR ESTABLISHING LOCATION. IF REESTABLISHED THROUGH LOST CORNER PROPORTIONATE METHODS, INDICATE ALL MONUMENTS, DISTANCES AND DIRECTIONS USED TO ESTABLISH. INDICATE TYPE OF MONUMENT AND SIGN POST FOUND OR SET.

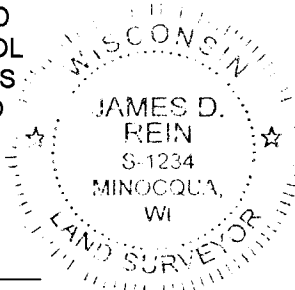
This is a perpetuation of a previous U.S.P.L.S. Monument Record by Milo E. Stefan, RLS, dated November 30, 1987, and filed in the office of the Oneida County Register of Deeds. A complete history of the corner can be found on the previous monument record. I accept the previous location as a true and faithful perpetuation or reestablishment of the original corner location and further perpetuate it as follows.

March 12, 2018, I, James D. Rein, P.L.S. No. S-1234, found and accepted the Oneida County capped aluminum monument set by Stefan. Stefan's southeasterly birch and southwesterly red pine witness trees are now gone - see below for updated witnesses.

(c)(d)(e) PLAN VIEW OF CORNER WITH TIES TO AT LEAST 4 WITNESS MONUMENTS. IF IN DISAGREEMENT WITH PREVIOUSLY ESTABLISHED CORNER, SHOW THE DISTANCE BETWEEN THE TWO CORNERS AND ALSO INDICATE THE TIES TO THE DISPUTED CORNER.



(i) I, JAMES D. REIN, PROFESSIONAL LAND SURVEYOR NO. S-1234 HEREBY CERTIFY THAT THE CORNER LOCATION ON THIS RECORD WAS DETERMINED BY ME OR UNDER MY DIRECTION AND CONTROL AND THAT THIS U.S. PUBLIC LAND SURVEY MONUMENT RECORD IS CORRECT AND COMPLETE TO THE BEST OF MY KNOWLEDGE AND BELIEF.



James D. Rein
SIGNATURE

3-17-18
DATE

INDEX NO. R-23
3707240020