

At \_\_\_\_\_ O'Clock \_\_\_\_\_ M  
**THOMAS H. LEIGHTON**  
 REGISTER OF DEEDS

This form is intended to fulfill the requirements of Chapter A-E7.08 (3)(a) thru (i) U.S. Public Land Survey Monument Location Record, Wisconsin Administrative Code. Use the reverse side of form for continuation.

**U.S. PUBLIC LAND SURVEY MONUMENT LOCATION RECORD**

Recorders Data

USPLS CORNER: **SOUTH MC** SECTION: **19** TOWNSHIP: **37** NORTH RANGE: **8** EAST  
 NAME OF WATERWAY FOR M.C. CORNER : **MILDRED LAKE** SECTION LINE: **WEST**  
~~(CITY/VILLAGE)~~(TOWN) OF: **NEWBOLD** COUNTY OF: **ONEIDA**

Description of monument found or placed and all other evidence used as the basis for monument location; including monuments and measurements required if the corner location was reestablished by lost corner proportionate methods. Also indicate name of the original surveyor, original survey date and the corner monument, bearing trees, witness or other reference monuments established, including measured bearing and distance ties, from available survey records.

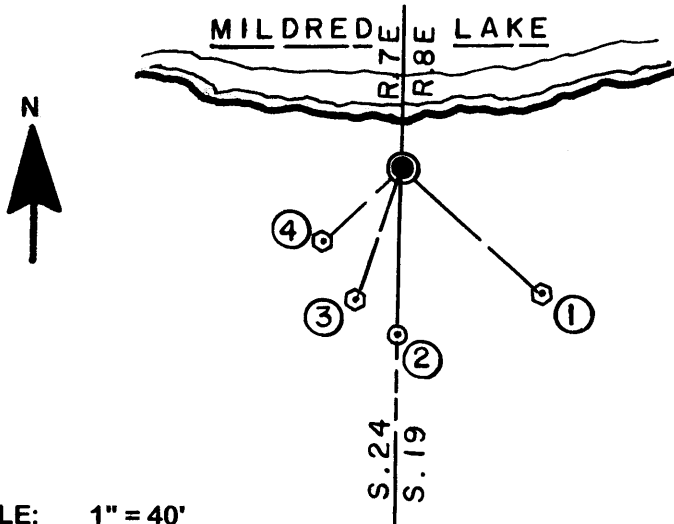
In August/September 1860, Alfred Millard/GLO set a wood post as original MC, now gone, and noted OBTs: a 9" By S84°E 10 links, now gone, and a 20" Pw S22°W 47 links, now a 20" high rotted stump with lower blaze face missing at S24°W 31'+/-.

On County Plat of Lake Mildred Park filed in Oneida County records, James D. Rein/RLS 1234, notes a 3/4" dia. iron pipe found at this MC and notes BTs: Original GLO Pw stump S22°W 31.3', 13" Oak S77°E 13.6' and a 20" Pr S40°W 22.5'.

In August 1984, Michael J. Romportl/RLS 1624, notes an iron pipe found at this MC and a 1" dia. x 24" long iron pipe set S0°47'E 35.61' from the MC iron pipe, per Certified Survey Map No. 1088/1088A filed in Oneida County records. In June 1990, Michael J. Romportl/RLS 1624, notes that both of the latter 1984 iron pipes were found per Certified Survey Map No. 1411/1411A filed in Oneida County records.

On June 28, 2006, I found an old rusty and bent 3/4" dia. iron pipe in a cairn of rocks at this MC, which I carefully removed and drove a standard 2" dia. aluminum pipe monument with stamped Oneida County cap into soli cavity of old iron pipe to 4" above cairn of rocks around the monument. Corner falls 10' South of lakeshore line this date and 3'+/- North of OHWM; This recovery witnessed by Jeffrey & Karen Hall, owners of improved lake Lot 1 of above county plat at Fire No. 7298 on Mildred Parkway. This recovered corner may be subject to future disturbance by lake ice jamming onto the lakeshore.

Plan view map of monument location with bearing and distance ties to a minimum of four(4) described witness or reference monuments of concrete, natural stone, iron, live bearing trees or equivalent material. If applicable, also show a minimum of two(2) bearing and distance ties to any other monument found and not accepted; including the bearing and distance from the accepted monument.



SCALE: 1" = 40'

**WITNESS MONUMENT TIES:**

- ① New 18" Pr BT S43°E 39.35'.
- ② Old 1" dia. iron pipe found with uncapped top 3" above grade S02°W 35.23'.
- ③ New 6" Mr BT S19°W 29.05'.
- ④ Old 19" Pr BT with lower blaze partially shut S44°W 22.39'; I nailed a standard BT sign to upper face.

I set a standard white poly 'T' marker post 5.5' South of monument at bottom edge of steep slope up to South.

Unless otherwise indicated, all bearing tree ties are to a .25" dia. by 2.5" long PK nail with a 1.25" dia. steel washer driven into unblazed right face and a .25" dia. by 2.5" long PK nail with a 2" dia. steel washer stamped BT is also driven into unblazed face of bearing tree at DBH; the basis for measured bearings is by compass to nearest degree and all tie distances are measured horizontal by steel tape corrected to nearest 1/100th feet at standard temperature of 68° F.

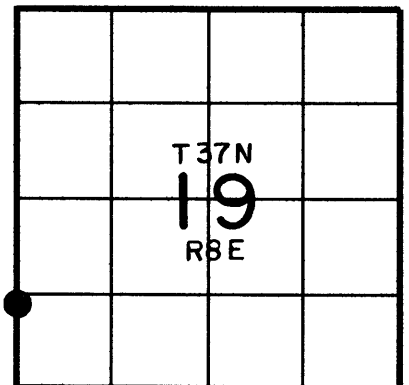
RLS SEAL:



**LAND SURVEYOR CERTIFICATE:**

I, William C. Rohde, hereby certify that I am duly licensed as a Professional Land Surveyor in the State of Wisconsin; that this USPLS monument location was determined by me and/or under my direct supervision and control; and that this U.S. Public Land Survey Monument Location Record is true and correct to the best of my knowledge and belief.

Signed: *William C. Rohde*  
 William C. Rohde RLS 841

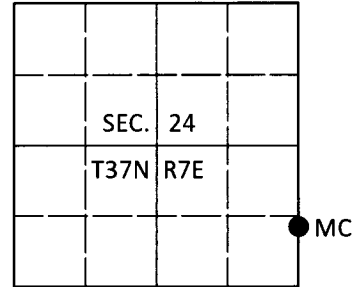


# U.S. PUBLIC LAND SURVEY MONUMENT RECORD

Note: This form is intended and designed to fulfill all requirements of Wisconsin Administrative Code, Chapter A-E 7.08 U.S. Public Land Survey Monument Record (3)(a-i).

(a) CORNER LOCATION  
 Meander Cor. of Secs. 19 & 24  
 Township 37 North  
 Range 7 & 8 East of the 4th P.M.  
 Town of Cassian & Newbold  
 County of Oneida

WISCRS - Oneida County  
 N: 179,092.74 USft  
 E: 228,964.90 USft  
 Datum: NAD83(2011)  
 GNSS Method: RTN - Offset  
 GNSS Control: WISCORS VRS



(b) HISTORY OF ORIGINAL CORNER ESTABLISHMENT

Original Surveyor:

Original Accessories:

Date of Survey      Commenced:  
    Completed:

See previous monument record(s)

(b)(f)(g)(h) Description of monument found at this corner and if it was accepted, state all evidence (material, testimonial, occupational, plats, records, other monuments) used as a basis for accepting. If not accepted or if nothing was found, state evidence used as basis for establishing location. If re-established through lost corner proportionate methods, indicate all monuments, distances and directions used to establish. Indicate type of monument and sign post found or set.

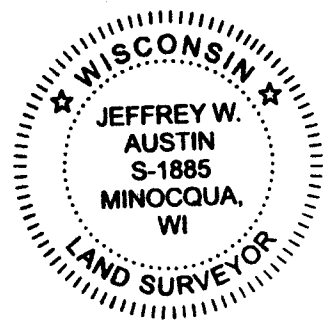
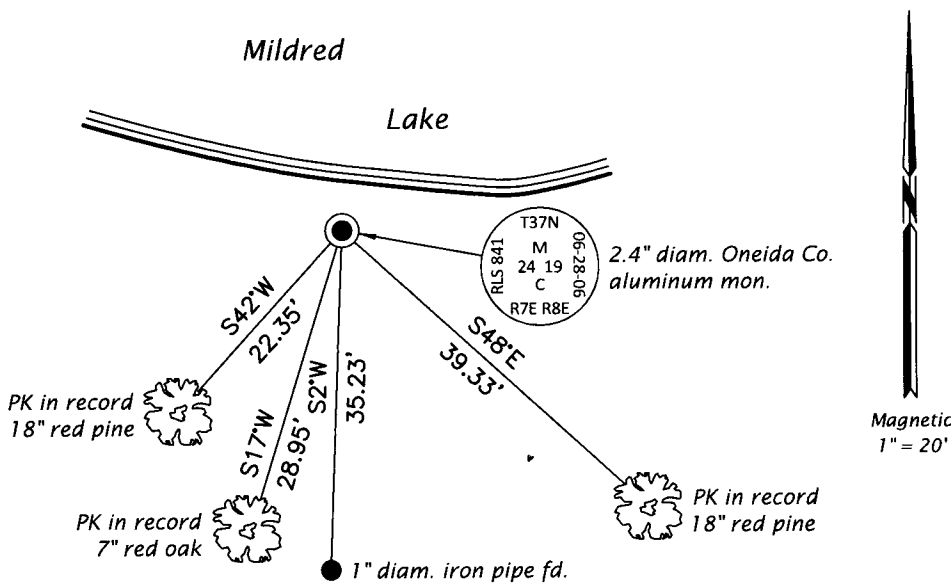
*This is a perpetuation of the following monument record(s) that comprise a complete history of the corner:*

*Nov. 20, 2006: USPLS Monument Record No. 3707240800 by William C. Rohde, RLS*

*July 13, 2019: I found and accepted the record monument, a 2.4" diam. aluminum pipe with a 3.3" diam. Oneida Co. aluminum cap projecting 6" above a collar of stone and 12" beneath the water surface. The lake level appears to be temporarily elevated. I found or established accessories as shown below. I found a white vinyl sign post bearing South, 0.5 ft.*

*The coordinate value shown has been verified by at least one of the following methods: 1) comparison to a previously GPS determined published value; 2) the value is the average of two or more GPS observations at a markedly different time; 3) one or more distances were measured back to the GPS observed corner from temporary GPS observed offset locations.*

(c)(d)(e) Plan view of corner with ties to at least 4 witness monuments. If in disagreement with previously established corner, show the distances between the two corners and also indicate the ties to the disputed.

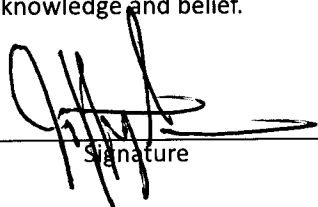


REGISTER OF DEEDS OFFICE  
 ONEIDA COUNTY  
 FILED

**AUG 28 2019**

KYLE J. FRANSON  
 REGISTER OF DEEDS

(i) I, Jeffrey W. Austin, Professional Land Surveyor No. S-1885, hereby certify that the corner location on this record was determined by me or under my direction and control and that this U.S. Public Land Survey Monument Record is correct and complete to the best of my knowledge and belief.

  
 Signature

**AUG. 9, 2019**  
 Date

3707240800 (INDEX NO. Q,R-25)