

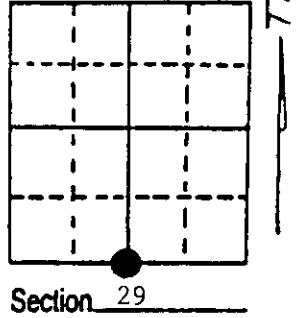
U.S. PUBLIC LAND SURVEY MONUMENT RECORD

Note: This form is intended and designed to fulfill all requirements of Wisconsin Administrative Code, Chapter A-E 7.08 U.S. Public Land Survey Monument Record (3) (a) (b) (c) (d) (e) (f) (g) (h) (i). An additional sheet may be added if necessary to conform with said requirements.

(a) Corner location: Township 37 North
 Range 7 East/West

Town/City/Village Cassian

County Oneida



(b) (f) (g) (h) Description of monument found at this corner and if it was accepted, state all evidence (material, testimonial, occupational, plats, records, other monuments) used as a basis for accepting. If not accepted or if nothing was found, state evidence used as basis for establishing location. If reestablished through lost corner proportionate methods, indicate all monuments, distances and directions used to establish. Indicate type of monument found or set and sign post.

1862 - Joseph H. Jenkins established this corner, set post and BTs:
 10" Aspen, S52°E, 24 Links (15.84').
 10" Maple, N41°W, 6 Links (3.96').

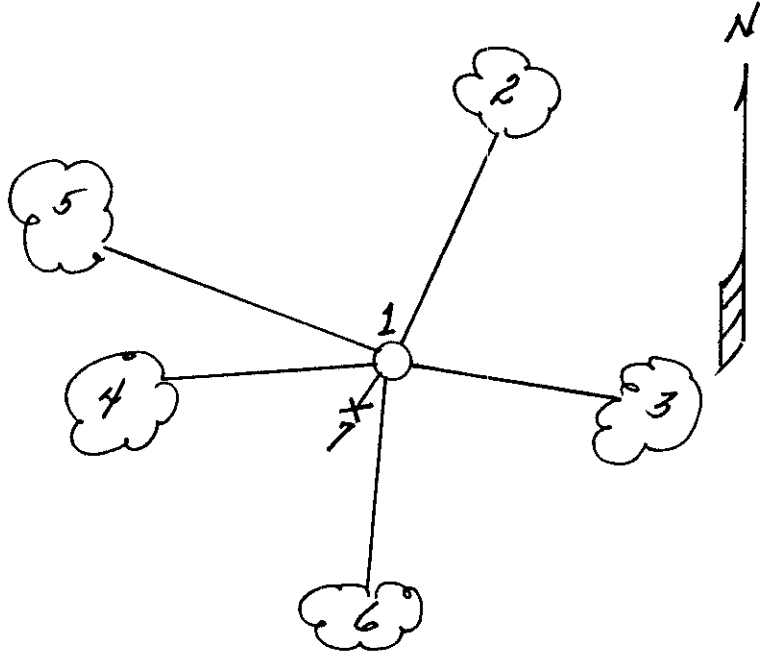
4/22/1993 - Milo E. Stefan found 2" x 18" high iron pipe with Brass Cap and BTs. This is RIPCO work of which we have no record.

We made one new BT and set plastic sign post, took bearings and distances to old BTs.

(c) (d) (e) Plan view of corner with ties to at least 4 witness monuments. If in disagreement with previously established corner, show the distances between the two corners and also indicate the ties to the disputed corner.

- 1) 2" x 18" high iron pipe/brass cap.
- 2) 12" Red Oak, N13°E, 34.90'.
- 3) 10" Red Oak, S86°E, 26.90'.
- 4) 10" Red Maple, S87°W, 15.99'.
- 5) 8" Red Oak, N80°W, 46.20'.
- 6) 4" Red Oak, S2°W, 14.02'.
- 7) Plastic sign post, SW, .3'.

Distances to nail in side of BTs.



(i) I, Milo E. Stefan
 (type or print name) certify that the corner location on this record was determined by me or under my direction and control and that this U.S. Public Land Survey Monument Record is correct and complete to the best of my knowledge and belief.

Milo E. Stefan
 Signature

June 27, 1993
 Date



3707290020
 Stamp

Index No. V-7

U.S. PUBLIC LAND SURVEY MONUMENT RECORD

Note: This form is intended and designed to fulfill all requirements of Wisconsin Administrative Code, Chapter A-E 7.08 U.S. Public Land Survey Monument Record (3)(a)(b)(c)(d)(e)(f)(g)(h)(i). An additional sheet may be added if necessary to conform with said requirements.

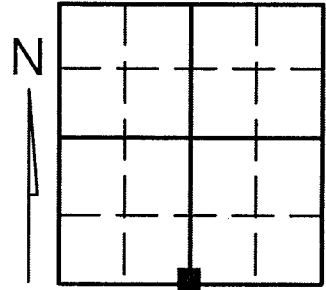
(a) Corner location: Township 37 North
Range 07 East/West

REGISTER OF DEEDS OFFICE
ONEIDA COUNTY
FILED

JAN 15 2019

Town/City/Village CASSIAN
County ONEIDA

KYLE J. FRANSON
REGISTER OF DEEDS



Section 29

(b) (f) (g) (h) Description of monument found at this corner and if it was accepted, state all evidence (material, testimonial, occupational, plats, records, other monuments) used as a basis for accepting. If not accepted or if nothing was found, state evidence used as basis for establishing location. If reestablished through lost corner proportionate methods, indicate all monuments, distances and directions used to establish. Indicate type of monument found or set and sign post.

- SEE ONEIDA COUNTY LAND RESTORATION FORM V-7 FOR THE ORIGINAL GOVERNMENT NOTES FROM 1862 FOR THE ESTABLISHMENT OF THIS CORNER.

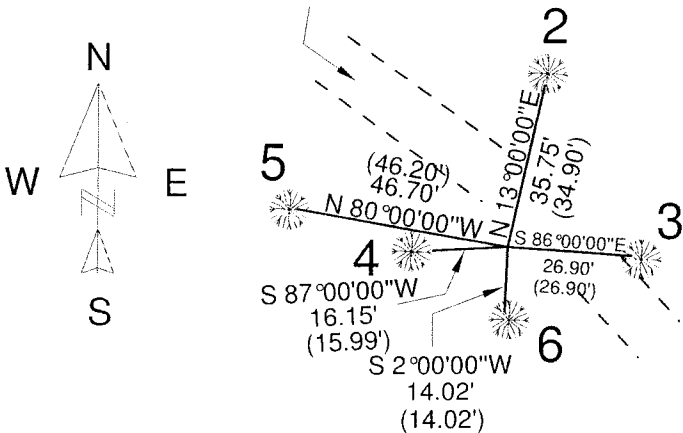
- APRIL 22, 1993- MILO STEFAN FOUND A 2" X 18" HIGH IRON PIPE WITH BRASS CAP AND B.T.'S. MR. STEFAN DECLARED THAT THE WORK WAS COMPLETED BY RIPCO, OF WHICH HE HAD NO DOCUMENTATION OF. MR. STEFAN DOCUMENTED THE CORNER ON ONEIDA COUNTY RESTORATION FORM V-7

-JANUARY 12, 2019- AT THE REQUEST OF THE NORTHWOODS PASSAGE SNOWMOBILE CLUB, KEVIN P. BIXBY, BIXBY LAND SURVEYING INC. INSPECTED THE CORNER. MR. BIXBY FOUND A 2 1/2" BRASS CAPPED IRON PIPE, FIVE LONG 2.50 FEET ABOVE GRADE. MR. BIXBY RE-SET THE CORNER PER ONEIDA COUNTY RESTORATION FORM INFORMATION V-7 AS SAID CORNER WAS NOT IN HARMONY WITH CORNER FORM V-7 DATA. MR. BIXBY WITNESSED AS SHOWN BELOW.

(c) (d) (e) Plan view of corner with ties to at least 4 witness monuments. If in disagreement with previously established corner, show the distances between the two corners and also indicate the ties to the disputed corner.

LEGEND

NOTE: SET WHITE PLASTIC SIGN POST
WOODS TRAIL 0.50 FEET NORTH OF CORNER



- 2- EXISTING 20" OAK B.T.
- 3- EXISTING 18" OAK B.T.
- 4- EXISTING 15" MAPLE B.T.
- 5- EXISTING 16" OAK B.T.
- 6- EXISTING 8" OAK
- () MEASUREMENT PER CORNER FORM V-7

(i) I, KEVIN P. BIXBY

(type or print name) certify that the corner location on this record was determined by me or under my direction and control and that this U.S. Public Land Survey Monument Record is correct and complete to the best of my knowledge and belief.



Index No. V-7

Kevin P. Bixby
Signature

01/15/19
Date

Stamp

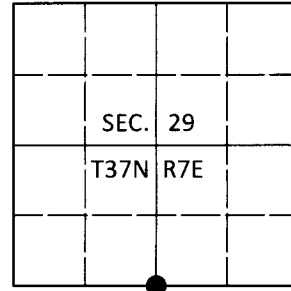
3707290020

U.S. PUBLIC LAND SURVEY MONUMENT RECORD

Note: This form is intended and designed to fulfill all requirements of Wisconsin Administrative Code, Chapter A-E 7.08 U.S. Public Land Survey Monument Record (3)(a-i).

(a) CORNER LOCATION
 1/4 Cor. of Secs. 29 & 32
 Township 37 North
 Range 7 East of the 4th P.M.
 Town of Cassian
 County of Oneida

WISCRS - Oneida County
 N: 172,648.38 USft
 E: 205,334.56 USft
 Datum: NAD 83(2011)
 GNSS Method: RTN - Offset
 GNSS Control: WISCORS VRS



(b) HISTORY OF ORIGINAL CORNER ESTABLISHMENT

Original Surveyor:

Original Accessories:

Date of Survey Commenced:
 Completed:

See previous monument record(s)

(b)(f)(g)(h) Description of monument found at this corner and if it was accepted, state all evidence (material, testimonial, occupational, plats, records, other monuments) used as a basis for accepting. If not accepted or if nothing was found, state evidence used as basis for establishing location. If re-established through lost corner proportionate methods, indicate all monuments, distances and directions used to establish. Indicate type of monument and sign post found or set.

This is a perpetuation of the following monument record(s) that comprise a complete history of the corner:

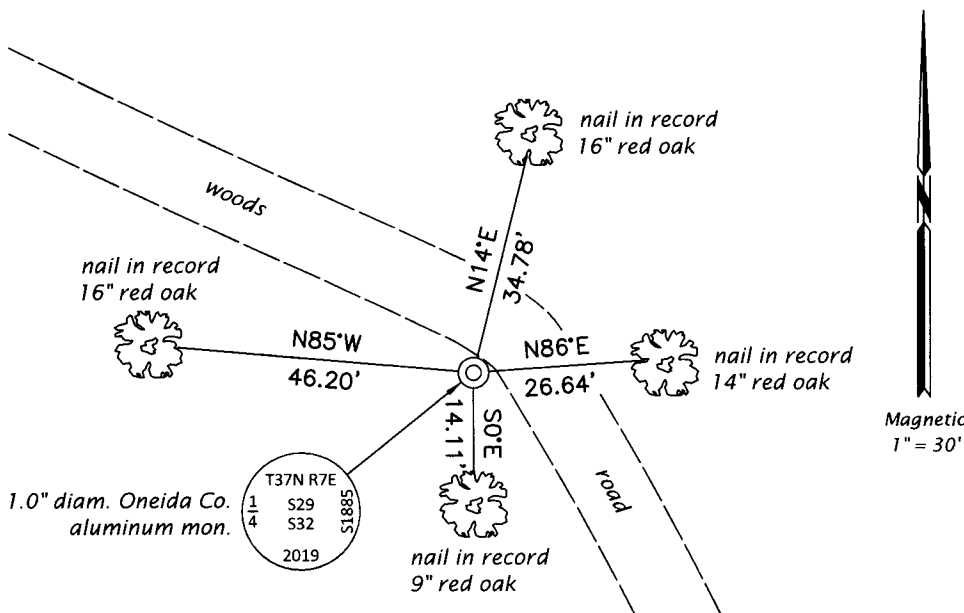
June 27, 1993: USPLS Monument Record No. 3707290020 by Milo E. Stefan, PLS

Jan. 15, 2019: USPLS Monument Record No. 3707290020 by Kevin P. Bixby, PLS

Oct. 9, 2019: I found and removed from the field, the record monument, a 2.4" diam., 61" long iron pipe with a 2.4" diam. brass cap. The monument was found standing high and very loose in a 6" diam. hole. As surveyor Bixby reported issues reconciling measurements to Stefan's accessories, I established the corner at the location of my GPS observation from 2011. Measurements to Stefan's accessories from the resulting corner location agree with the record reasonably well. At the corner point, I set a 1.0" diam., 30" long aluminum pipe with a 2.5" diam. Oneida Co. aluminum cap buried 6" beneath the ground surface. I set a clear/black DEEP-1 magnet adjacent to the monument. I found accessories as shown below. Stefan's maple was found in decline at the record location. I found a white vinyl sign post bearing South, 0.9 ft.

The coordinate value shown has been verified by at least one of the following methods: 1) comparison to a previously GPS determined published value; 2) the value is the average of two or more GPS observations at a markedly different time; 3) one or more distances were measured back to the GPS observed corner from temporary GPS observed offset locations.

(c)(d)(e) Plan view of corner with ties to at least 4 witness monuments. If in disagreement with previously established corner, show the distances between the two corners and also indicate the ties to the disputed.



REGISTER OF DEEDS OFFICE
 ONEIDA COUNTY
 FILED

DEC 23 2019

KYLE J. FRANSON
 REGISTER OF DEEDS

(i) I, Jeffrey W. Austin, Professional Land Surveyor No. S-1885, hereby certify that the corner location on this record was determined by me or under my direction and control and that this U.S. Public Land Survey Monument Record is correct and complete to the best of my knowledge and belief.

[Handwritten Signature]
 Signature

5 DEC 2019
 Date