

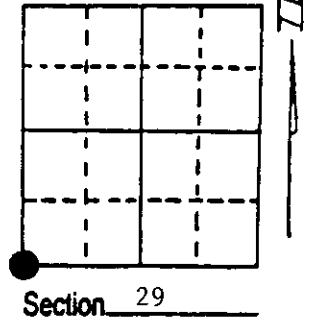
# U.S. PUBLIC LAND SURVEY MONUMENT RECORD

**Note:** This form is intended and designed to fulfill all requirements of Wisconsin Administrative Code, Chapter A-E 7.08 U.S. Public Land Survey Monument Record (3) (a) (b) (c) (d) (e) (f) (g) (h) (i). An additional sheet may be added if necessary to conform with said requirements.

(a) Corner location: Township 37 North  
 Range 7 East/West

Town/City/Village Cassian

County Oneida



(b) (f) (g) (h) Description of monument found at this corner and if it was accepted, state all evidence (material, testimonial, occupational, plats, records, other monuments) used as a basis for accepting. If not accepted or if nothing was found, state evidence used as basis for establishing location. If reestablished through lost corner proportionate methods, indicate all monuments, distances and directions used to establish. Indicate type of monument found or set and sign post.

1862 - Joseph H. Jenkins established this corner, set post and BTs:  
 8" Maple, N16°E, 9 Links (5.94') 7" Birch, S72°E, 35 Links (23.10')  
 10" Birch, S73°W, 59 Links (38.94') 10" Birch, N44°W, 25 Links (16.50')

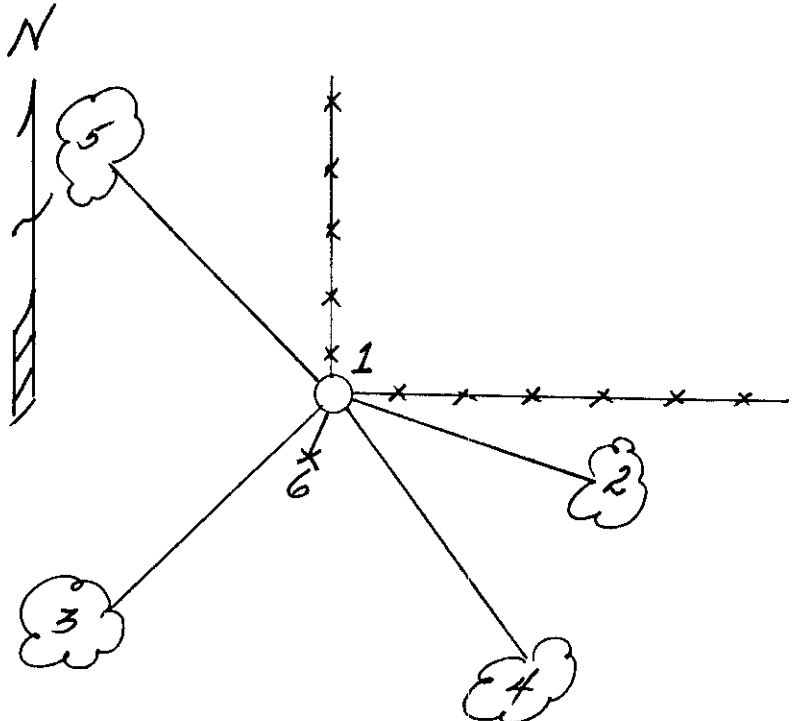
10/1/1968 - McNown called iron pipe/brass cap in survey of SE $\frac{1}{4}$ SE $\frac{1}{4}$  Section 30.

4/22/1993 - Milo E. Stefan found 2" iron pipe/brass cap.  
 Fence line North and East, poor state of maintenance.  
 18" White Pine BT, S45°W, 75.85'.  
 I accept this iron monument as the perpetuated Section Corner and restore same.

(c) (d) (e) Plan view of corner with ties to at least 4 witness monuments. If in disagreement with previously established corner, show the distances between the two corners and also indicate the ties to the disputed corner.

- 1) 2" x 24" high iron pipe/brass cap.
- 2) 20" Red Oak, S74°E, 25.38'.
- 3) 18" White Pine, S45°W, 75.85'.
- 4) 5" Red Maple, S42°E, 53.46'.
- 5) 16" Red Oak, N44°W, 51.86'.
- 6) Plastic sign post, South, 1.0'.

BTs stump blaze scribed "BT".  
 Distances from nail in side of BTs.



(i) I, Milo E. Stefan  
 (type or print name) certify that the corner location on this record was determined by me or under my direction and control and that this U.S. Public Land Survey Monument Record is correct and complete to the best of my knowledge and belief.

Milo E. Stefan  
 Signature

June 27, 1993

Date



3707300000  
 Stamp

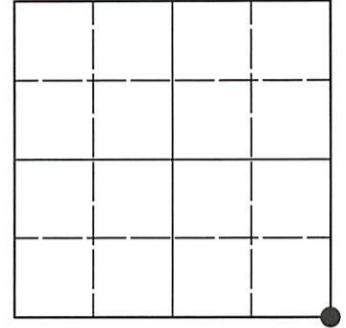
Index No. V-5

# U.S. PUBLIC LAND SURVEY MONUMENT RECORD

Note: This form is intended and designed to fulfill all requirements of Wisconsin Administrative Code, Chapter A-E 7.08 U.S. Public Land Survey Monument Record (3)(a-i).

(a) CORNER LOCATION  
 Cor. of Secs. 29, 30, 31 & 32  
 Township 37 North  
 Range 7 East of the 4th P.M.  
 Town of Cassian  
 County of Oneida

WISCRS - Oneida County  
 N: 172,666.57 USft  
 E: 202,690.14 USft  
 Datum: NAD 83(2011) ep. 2010.00  
 GNSS Method: RTN - Offset  
 GNSS Control: WISCORS VRS



Sec. 30, T. 37 N., R. 7 E.

(b)(f)(g)(h) Description of monument found at this corner and if it was accepted, state all evidence (material, testimonial, occupational, plats, records, other monuments) used as a basis for accepting. If not accepted or if nothing was found, state evidence used as basis for establishing location. If re-established through lost corner proportionate methods, indicate all monuments, distances and directions used to establish. Indicate type of monument and sign post found or set.

*This record is a perpetuation of the following land corner document(s):*

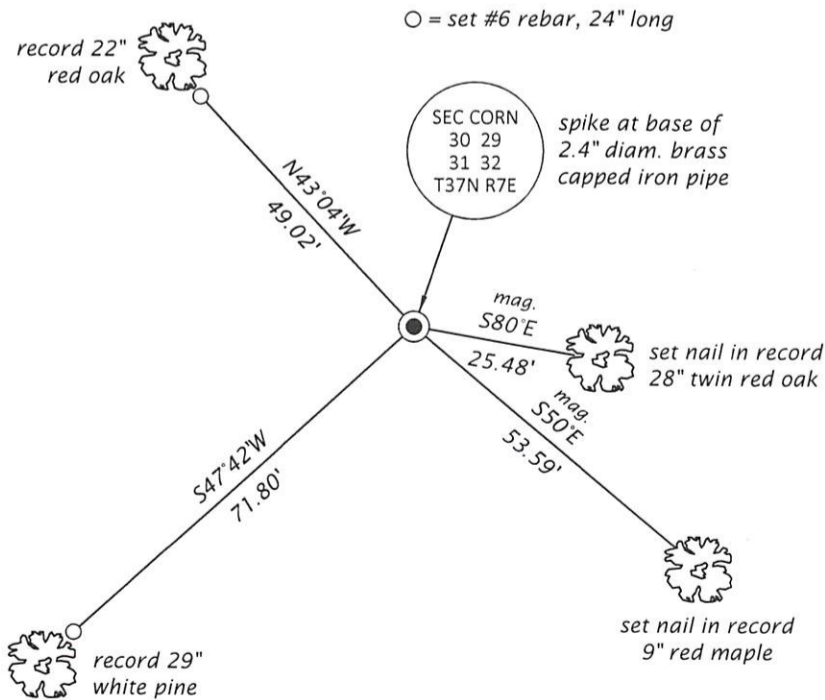
*June 27, 1993: USPLS Monument Record by Milo E. Stefan, filed in Oneida County*

*A complete history of the corner can be found on the previous land corner document(s). I accept the record activity as a true and faithful perpetuation or reestablishment of the original corner location and further perpetuate it as described below.*

*July 13, 2023: I found and accepted the record monument, a 2.4" diam. iron pipe, firmly set, with a 2.4" diam. brass cap projecting 24" above the ground surface. The monument leans N60°E and is immovable due to roots grown around the base. I estimated the plumb position of the monument and set a 60d spike at its base. All measurements are from this point. I found or established accessories as indicated below. I found a white vinyl sign post bearing Southwest, 0.6 ft. and a steel fence post adjacent.*

*The coordinate value shown has been determined by traversing from two or more GNSS offset points satisfying the accuracy requirements defined and qualified in the 2022 Oneida County Fee Schedule for USPLS Corners.*

(c)(d)(e) Plan view of corner with ties to at least 4 witness monuments. If in disagreement with previously established corner, show the distances between the two corners and also indicate the ties to the disputed.



REGISTER OF DEEDS OFFICE  
 ONEIDA COUNTY  
 FILED

AUG 07 2023

KYLE J. FRANSON  
 REGISTER OF DEEDS

(i) I, Jeffrey W. Austin, Professional Land Surveyor No. S-1885, hereby certify that the corner location on this record was determined by me or under my direction and control and that this U.S. Public Land Survey Monument Record is correct and complete to the best of my knowledge and belief.

*[Handwritten Signature]*  
 \_\_\_\_\_  
 Signature

AUG - 1, 2023  
 \_\_\_\_\_  
 Date