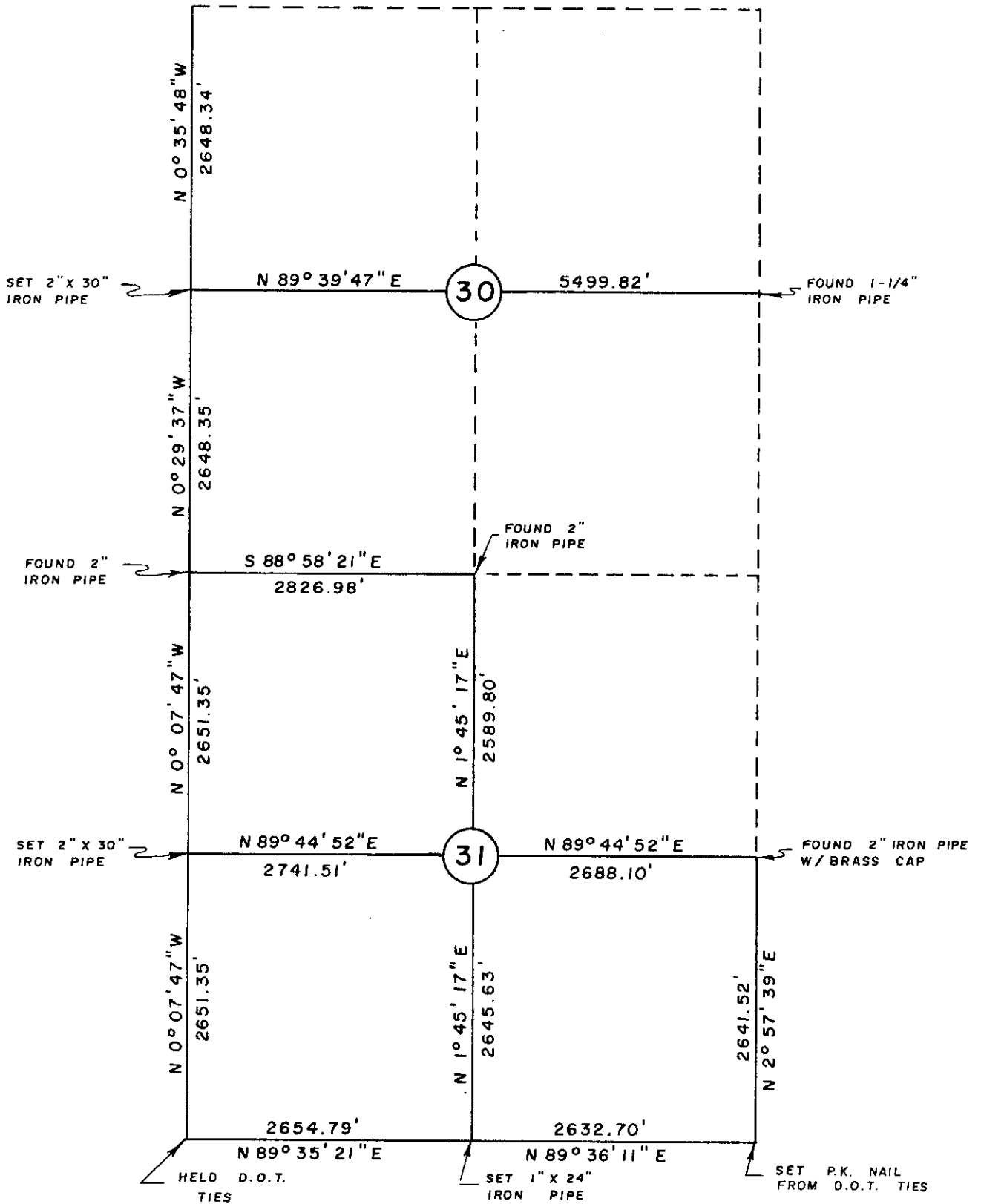


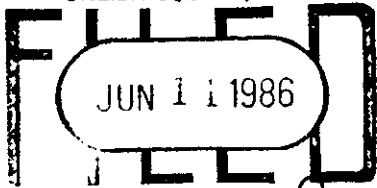


T 37 N , R 7 E

FOUND WELL POINT  
AND SCRIBED POST



REGISTER OF DEEDS OFFICE  
ONEIDA COUNTY, WIS.



At 10:30 O'clock  
DORIS VERABE KUEHN  
REGISTER OF DEEDS

# U.S. PUBLIC LAND SURVEY MONUMENT RECORD

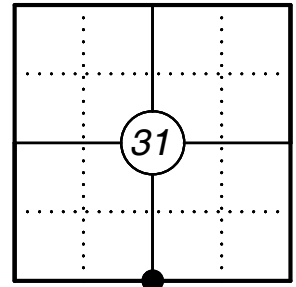
This form is intended and designed to fulfill all requirements of Wisconsin Administrative Code, Chapter A-E 7.08 U.S. Public Land Survey Monument Record (3) (a)(b)(c)(d)(e)(f)(g)(h)(i). An additional sheet may be added if necessary to confirm with said requirements.

Oneida County  
Land Information Office  
Filed  
3/26/2025

**(a) Corner Location:**

S 1/4 Corner Section 31  
Township 37 North  
Range 7 East  
Township of Cassian  
County of Oneida

Corner ID: 3707310020



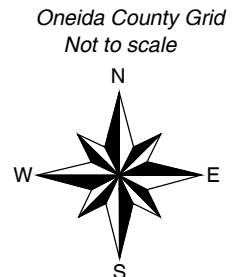
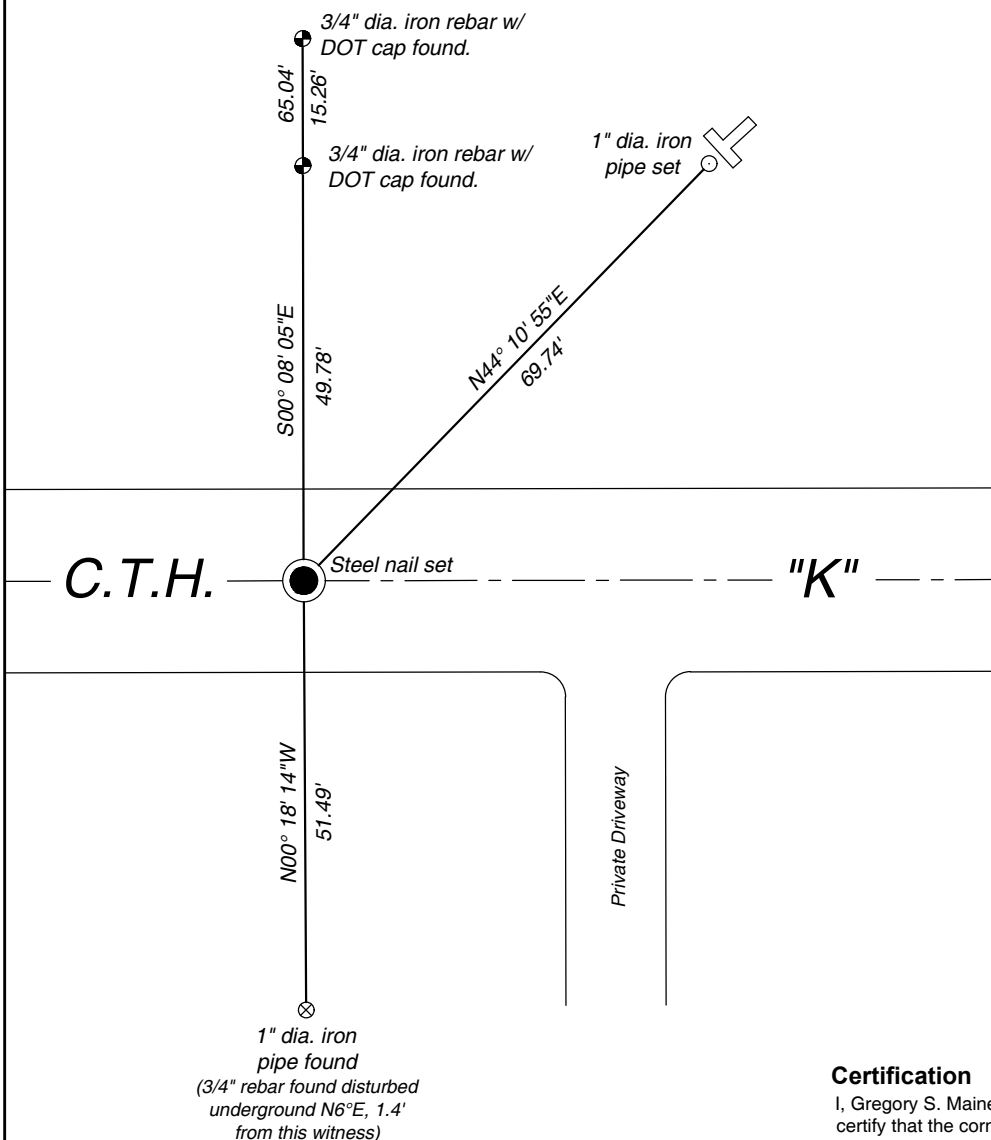
**(b) History of Original Corner:**

For corner history, see previous U.S. Public Land Survey Monument Record by LaVerne H. Mosher dated October 30, 1985.

**(f)(g)(h) Description of monument found at this corner and if it was accepted, state all evidence (material, testimonial, occupational, plats, records, other monuments) used as a basis for establishing location. If reestablishing through lost corner proportionate methods, indicate all monuments, distances, and directions used to establish. Indicate type of monument and sign post found or set.**

01/16/2024 - After a search for the monument and witnesses of record, I did not find the iron pipe in Hwy. "K" shown on the 1985 corner form by Mosher. The Oneida County published coordinate fits well with the surviving witnesses found and surveys of record, accepting the published coordinate as the best available evidence for the corner location I set a steel spike at the published coordinate location and witnessed the corner as shown below.

**(c)(d)(e) Plan view of corner with ties to at least four witnesses. If in disagreement with previously established corner, show the distances between the two corners and also indicate the tie to the disputed corner.**



\* Vinyl "T" post at NE witness monument.



**Certification**

I, Gregory S. Maines, Professional Land Surveyor No. 2729, hereby certify that the corner location on this record was referenced by me or under my direction and control and that this U.S. Public Land Survey Monument Record is complete to the best of my knowledge and belief. REF: 2022349-2

Index No.: