

CERTIFIED LAND CORNER RESTORATION

Index No. C-21

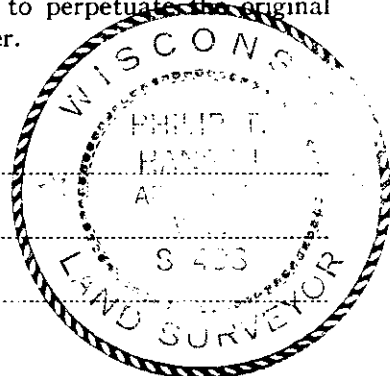
State of Wisconsin }
County of Oneida } ss.

I, Philip T. Hansen, do hereby certify that on the 19th day of April, 1977, I found evidence of the Quarter corner of Section 1 & 2 Township 37, North, Range 8 East, Fourth Principal Meridian, as described hereon; and that from this evidence I established a new monument and accessories as described hereon to perpetuate the original location of this corner.

Resident witnesses:

Jim Claflin

Herb Wagoner



History of original corner establishment:

Original Corner established by Wm. E. Dougherty, Deputy Surveyor, in 1863, from which Yellow Pine 7" bears N7°W, 124 links.

No other trees available for bearing trees.

Corner established by N. Loftus, Ripco Surveyor, in 1960. Ran random line 358° 09' mag. 76.61 chains to close out 3.76 chains west of NW corner. Set 1/4 corner at 39.22 chains and marked BTs - Black Spruce 6" N36°W, 19 links and Black Spruce 4" S16°W, 42 links.

Description of corner evidence found:

Recovered 1-3/4" iron pipe with 3" square brass cap in excellent condition and securely in ground. Monument projects 20" above ground. Cap stamped:

Recovered OBTs - Black Spruce 4" S16°W, 42.0 links (41.8 lks).
Black Spruce 6" (7") N36°W, 19.0 links (19.5 lks).
Scribed 1/4 S2 T37-8 BT.

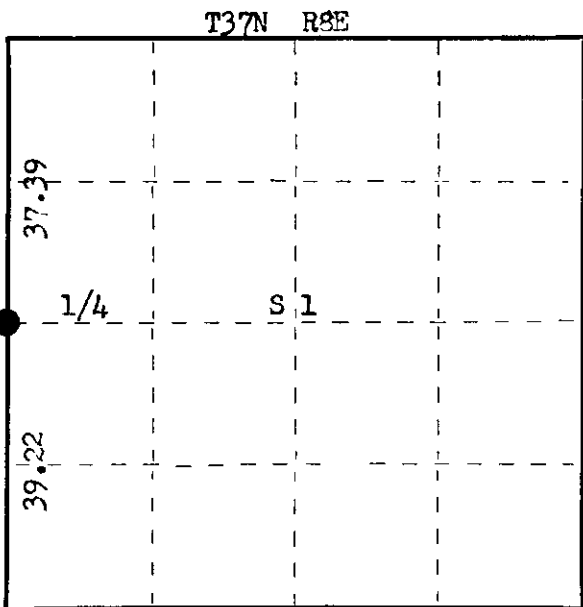
1/4
S2 S1

T37N R8E
RIPCO

Description of monument and accessories I established to perpetuate the original location of this corner.

As monument was recovered in good condition and firmly in ground, it was left in place.
NBT - Black Spruce 5" N78°W, 31.1 links, scribed 1/4 BT.

FORM 985 Wisconsin Surveyors' Liability Insurance



○ = Corner monument restored.

Dated at Rhineland, Wis., this 5th day of May, 1977.

Signature Philip T. Hansen Title Registered Land Surveyor Registration No. S-498
(County Surveyor, Registered Land Surveyor, or other duly authorized official)

Office of Register of Deeds, County of Oneida, I hereby certify that the within instrument was filed in this office for record on the 6th day of May, 1977 at 1:00 o'clock P. M.

Doris Terage Kuehn
(Register of Deeds)

By _____ Deputy

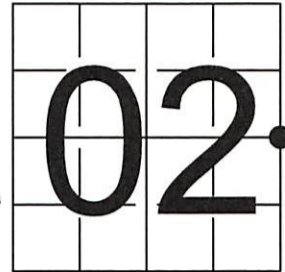
3708022000

U S PUBLIC LAND SURVEY MONUMENT RECORD

NOTE: This form is intended and designed to fulfill all requirements of Wisconsin Administrative Code, Chapter A-E 7.08 U.S. Public Land Survey Monument Record (3) (a-i)

A-E 7.08(3)(a) Identity of corner
 SOUTHEAST CORNER OF SECTION 02
 TOWNSHIP 37 NORTH
 RANGE 08 EAST OF THE 4TH PM
 TOWN OF PINE LAKE,
 COUNTY OF ONEIDA

WISCORS - ONEIDA COUNTY
 N: 196,692.067 USft
 E: 254,889.515 USft
 Datum: NAD83 (2011)
 GNSS Method RTN - Direct
 GNSS Control WISCORS VRS



The coordinate value shown has been verified by the average of two or more GPS observations at a markedly different time.

A-E 7.08(3)(b) Description of any record evidence, monument evidence, occupational evidence, testimonial evidence, or any other material evidence.

Original Surveyor: William E. Daugherty

REGISTER OF DEEDS OFFICE
 ONEIDA COUNTY
 FILED

Date of Original Survey Commenced: July 17, 1863
 Completed: July 29, 1863

APR 21 2022

Original Accessories:
 Yellow Pine 7 N 7° W 124 Links
 "No other tree near"

See Previous Monument Record:
 Index No. C-21

KYLE J. FRANSON
 REGISTER OF DEEDS

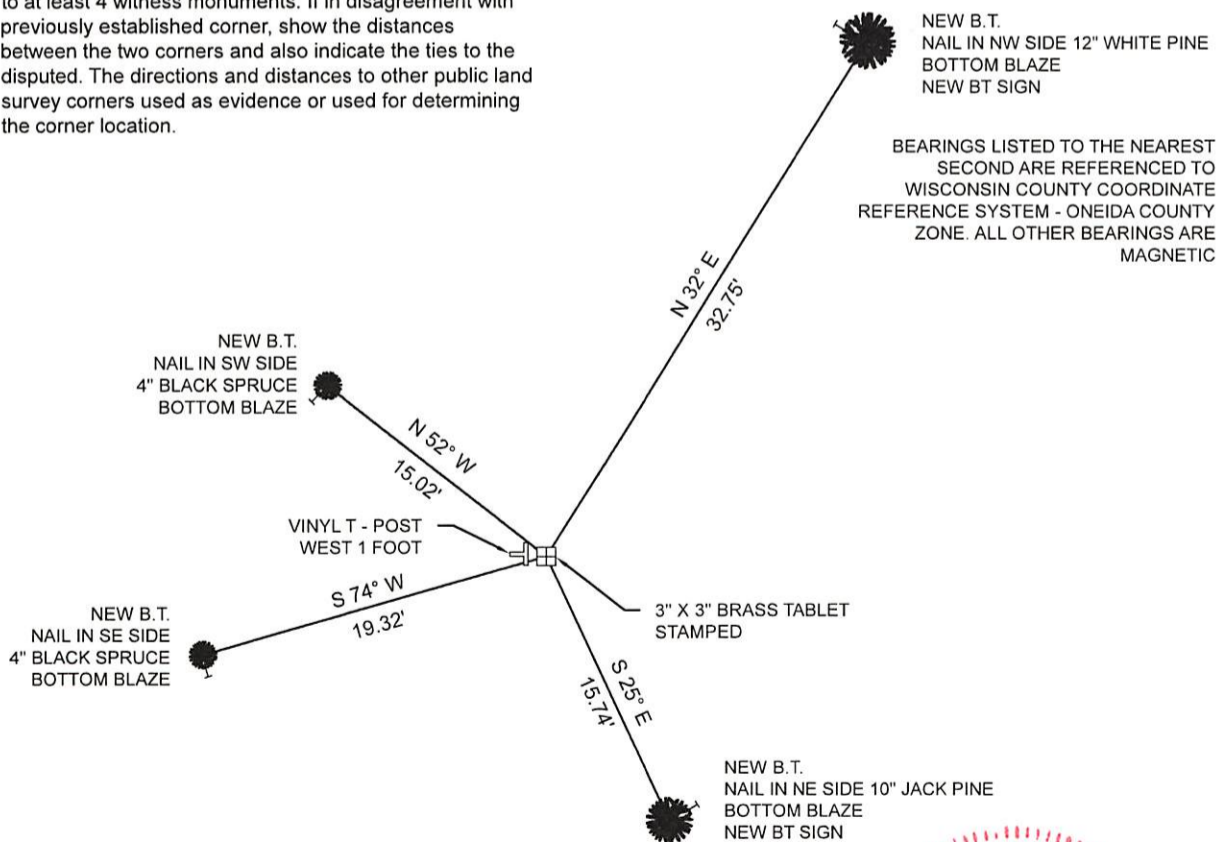
April 19, 1977 - Surveyor 498 - Philip T. Hansen - recovered a 1 3/4" iron pipe with a 3" square cap, and "OBT's" as described on Certified Land Corner Restoration Index No. C - 21 (Previous note: "Corner established by N. Loftus, in 1960")
 April 28, 1977 - Surveyor 00259 - Norman J. Loftus - indicates this position as "Section Corner (Evidence of old corners found)" on Oneida Co. Map C347.
 August 14, 1989 - Surveyor 1523 - Todd J. Loftus - indicates the same as Norman J. Loftus (Oneida Co. Map C347) on Oneida County Map C715.

A-E 7.08(3)(f) Whether the corner was restored through acceptance of an obliterated location or a found perpetuated location.

March 3, 2022 - I found a 1 3/4" diameter iron pipe with a 3" X 3" brass tablet affixed to the top & stamped to identify the corner. I did not find any BT's recovered or established as noted on Certified Land Corner Restoration C - 21.

I accept this monument as a FOUND PERPETUATED LOCATION OF THE CORNER and established new witnesses as shown below.

A-E 7.08(3)(c)(d)(e)(h) Plan view of corner with references to at least 4 witness monuments. If in disagreement with previously established corner, show the distances between the two corners and also indicate the ties to the disputed. The directions and distances to other public land survey corners used as evidence or used for determining the corner location.



BEARINGS LISTED TO THE NEAREST SECOND ARE REFERENCED TO WISCONSIN COUNTY COORDINATE REFERENCE SYSTEM - ONEIDA COUNTY ZONE. ALL OTHER BEARINGS ARE MAGNETIC



A-E 7.08(3)(i) I, Jeffrey L. DeMuth, Professional Land Surveyor No. S-2656, hereby certify that the corner location on this record was determined by me or under my direction and control and that this U.S. Public Land Survey Monument Record is correct and complete to the best of my knowledge, and belief

Jeffrey L. DeMuth
 SIGNATURE

April 12, 2022
 DATE



43708022000