

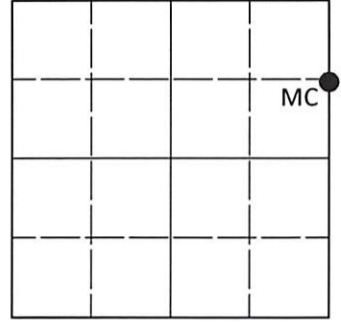


# U.S. PUBLIC LAND SURVEY MONUMENT RECORD

Note: This form is intended and designed to fulfill all requirements of Wisconsin Administrative Code, Chapter A-E 7.08 U.S. Public Land Survey Monument Record (3)(a-i).

(a) CORNER LOCATION  
 Meander Cor. of Secs. 3 & 4  
 Township 37 North  
 Range 8 East of the 4th P.M.  
 Town of Newbold & Pine Lake  
 County of Oneida

WISCRS - Oneida County  
 N: 198,041.41 USft  
 E: 243,566.10 USft  
 Datum: NAD 83(2011) ep. 2010.00  
 GNSS Method: RTN - Direct  
 GNSS Control: WISCORS VRS



Sec. 4, T. 37 N., R. 8 E.

(b)(f)(g)(h) Description of monument found at this corner and if it was accepted, state all evidence (material, testimonial, occupational, plats, records, other monuments) used as a basis for accepting. If not accepted or if nothing was found, state evidence used as basis for establishing location. If re-established through lost corner proportionate methods, indicate all monuments, distances and directions used to establish. Indicate type of monument and sign post found or set.

*This record is a perpetuation of the following land corner document(s):*

*February 26, 1988: USPLS Monument Record by Milo E. Stefan, filed in Oneida County*

*A complete history of the corner can be found on the previous land corner document(s). I accept the record activity as a true and faithful perpetuation or reestablishment of the original corner location and further perpetuate it as described below.*

*June 20, 2023: I found and accepted the record monument, a 2.4" diam. aluminum pipe, firmly set, with a 3.3" diam. Oneida Co. aluminum cap projecting 4" at the high water mark of Douglas Lake. The #2 and #3 record bearing trees are gone. I did not use the #5 white pine due to slope. I found or established accessories as indicated below. I found a white vinyl sign post adjacent to the monument.*

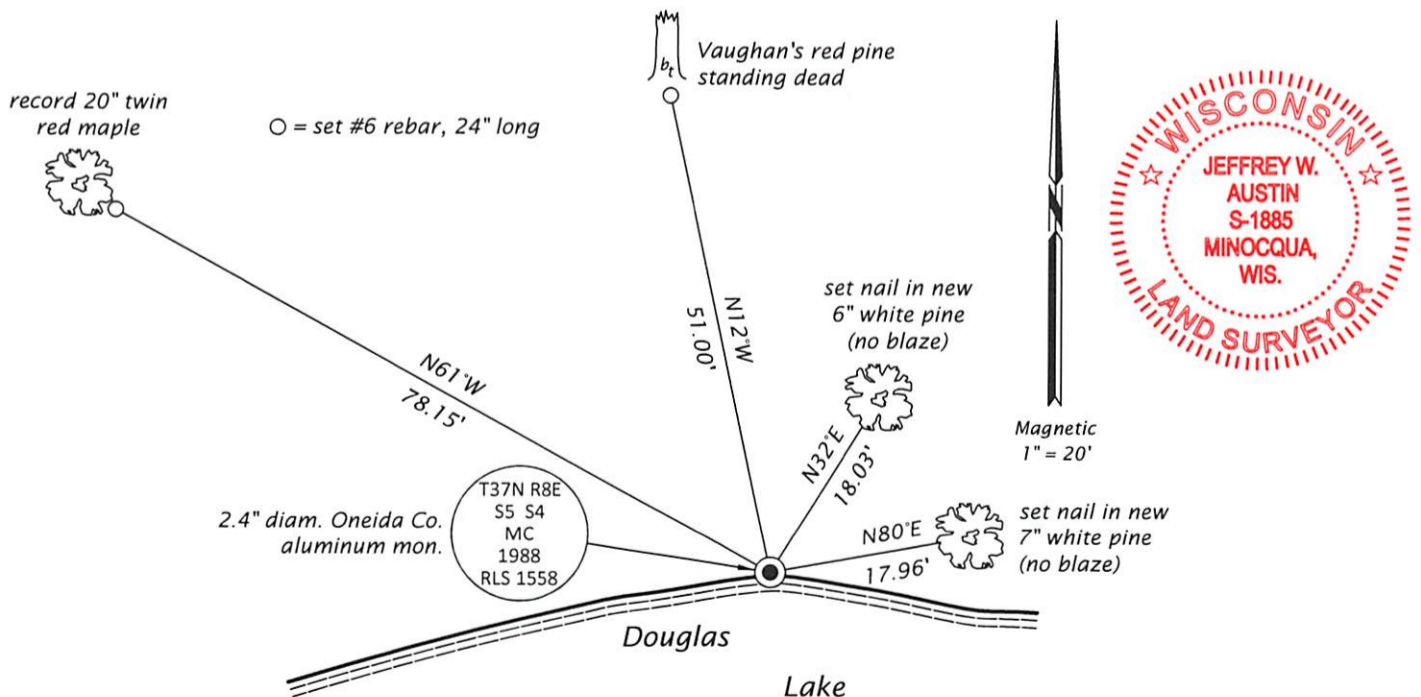
*The coordinate value shown is the weighted mean of two or more GNSS observations at markedly different times satisfying the accuracy requirements defined and qualified in the 2022 Oneida County Fee Schedule for USPLS Corners.*

REGISTER OF DEEDS OFFICE  
ONEIDA COUNTY  
FILED

JUL 06 2023

KYLE J. FRANSON  
REGISTER OF DEEDS

(c)(d)(e) Plan view of corner with ties to at least 4 witness monuments. If in disagreement with previously established corner, show the distances between the two corners and also indicate the ties to the disputed.



(i) I, Jeffrey W. Austin, Professional Land Surveyor No. S-1885, hereby certify that the corner location on this record was determined by me or under my direction and control and that this U.S. Public Land Survey Monument Record is correct and complete to the best of my knowledge and belief.

\_\_\_\_\_  
 Signature

JULY 1, 2023  
 \_\_\_\_\_  
 Date