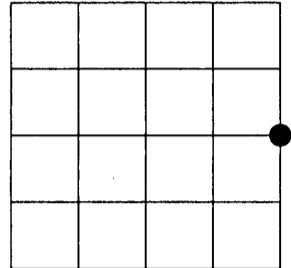
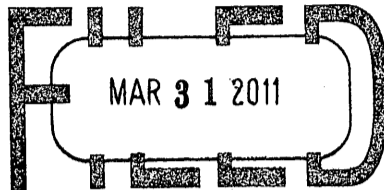


U.S. PUBLIC LAND SURVEY MONUMENT RECORD

NOTE: This form is intended and designed to fulfill all requirements of Wisconsin Administrative Code, Chapter A-E 7.08 U.S. Public Land Survey Monument Record (3)(a)(b)(c)(d)(e)(f)(g)(h)(i). An additional sheet may be added if necessary to conform with said requirements.

(a) Corner location: Township 37 North
 Range 08 East
 Town of Newbold
 Oneida County, Wisconsin

REGISTER OF DEEDS OFFICE
 ONEIDA COUNTY, WIS.



Section 06

At _____ O'Clock _____ M
THOMAS H. LEIGHTON

(b)(f)(g)(h) Description of monument found at this corner and if it was accepted. State all evidence (material, testimonial, occupational, plats, records, other monuments) used as a basis for accepting. If not accepted or if nothing was found, state evidence used as basis for establishing location. If reestablished through lost corner proportionate methods, indicate all monuments, distances and directions used to establish. Indicate type of monument found or set and sign post.

JULY 1863 -WILLIAM E. DAUGHERTY SET ¼ POST COMMON TO SECTIONS 5 & 6 BT'S: TAMARACK 6 N25°E, 11 LINKS AND TAMARACK 12 N85°W, 5 LINKS

PRIOR TO 1908 -MONSELL (POSSIBLE TIMBER CRUISER?) SET POST. REFERENCED IN D.H. VAUGHN'S FIELD BOOK 6.

JANUARY 1908 -D.H. VAUGHN FOUND AND ACCEPTED POST BY MONSELL.

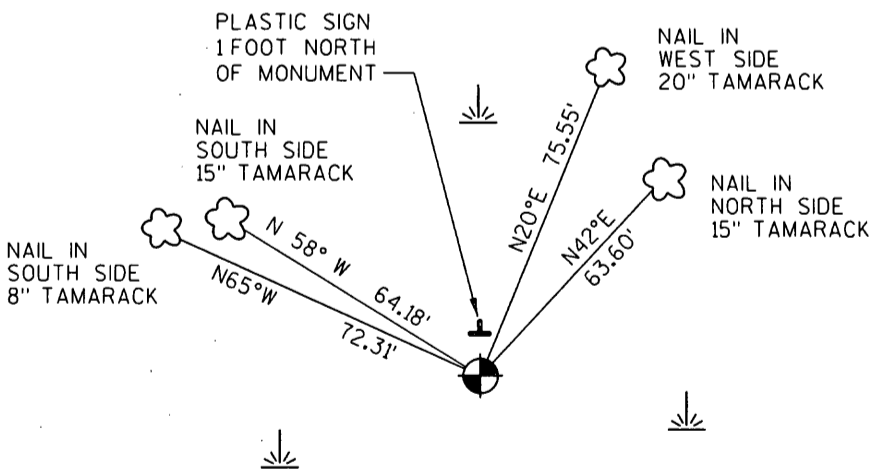
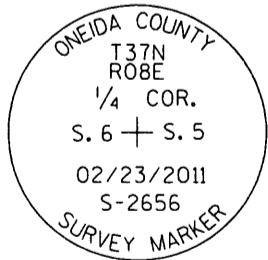
FEBRUARY 1954 -F.R. WINCENTSEN SETS ¼ POST USING VAUGHNS DISTANCE FROM THE WEST ¼ CORNER.
 BT'S TAMARACK 10 EAST 79 LINKS NO OTHER NEAR.

MARCH 1954 -IVAN BRANHAM SUBDIVIDES SECTION 6, REALIZES A DIFFERENCE IN VAUGHN AND WINCENTSENS LOCATION OF CENTER ¼ AND EAST ¼. BECAUSE OF LACK OF EVIDENCE BY VAUGHN AND "IMPROVED PROP. LINES IN SECTION 8" BRANHAM ACCEPTS WINCENTSENS POSITION.

FEBRUARY 2011 -JEFFREY DEMUTH FINDS WINCENTSEN'S BEARING TREE AT THE EAST ¼ CORNER AND HIS BEARING TREES AT THE CENTER ¼ CORNER. I DID NOT FIND ANY EVIDENCE OF VAUGHNS CORNERS, AND ACCEPTED WINCENTSENS POSITION AS THE BEST AVAILABLE EVIDENCE OF THE TRUE POSITION.

(c)(d)(e) Plan view of corner with ties to at least 4 witness monuments. If in disagreement with previously established corner, show the distances between the two corners and also indicate the ties to the disputed corner.

2" DIAMETER X 6' LONG ONEIDA COUNTY ALUMINUM MONUMENT WITH 3" STAMPED CAP



(i) I, Jeffrey L. DeMuth, Registered Land Surveyor #S-2656, hereby certify that the corner location on this record was determined by me or under my direction and control and that this U.S. Public Land Survey Monument Record is correct and complete to the best of my knowledge and belief.

[Handwritten Signature]
 Signature

03/24/2011
 Date



Index No. C-5

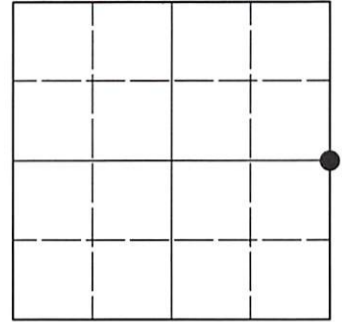
3708062000

U.S. PUBLIC LAND SURVEY MONUMENT RECORD

Note: This form is intended and designed to fulfill all requirements of Wisconsin Administrative Code, Chapter A-E 7.08 U.S. Public Land Survey Monument Record (3)(a-i).

(a) CORNER LOCATION
 1/4 Cor. of Secs. 5 & 6
 Township 37 North
 Range 8 East of the 4th P.M.
 Town of Newbold
 County of Oneida

WISCRS - Oneida County
 N: 196,272.26 USft
 E: 233,982.79 USft
 Datum: NAD 83(2011) ep. 2010.00
 GNSS Method: RTN - Direct
 GNSS Control: WISCORS VRS



Sec. 6, T. 37 N., R. 8 E.

(b)(f)(g)(h) Description of monument found at this corner and if it was accepted, state all evidence (material, testimonial, occupational, plats, records, other monuments) used as a basis for accepting. If not accepted or if nothing was found, state evidence used as basis for establishing location. If re-established through lost corner proportionate methods, indicate all monuments, distances and directions used to establish. Indicate type of monument and sign post found or set.

This record is a perpetuation of the following land corner document(s):

Mar. 24, 2011: USPLS Monument Record by Jeffrey L. DeMuth, filed in Oneida County

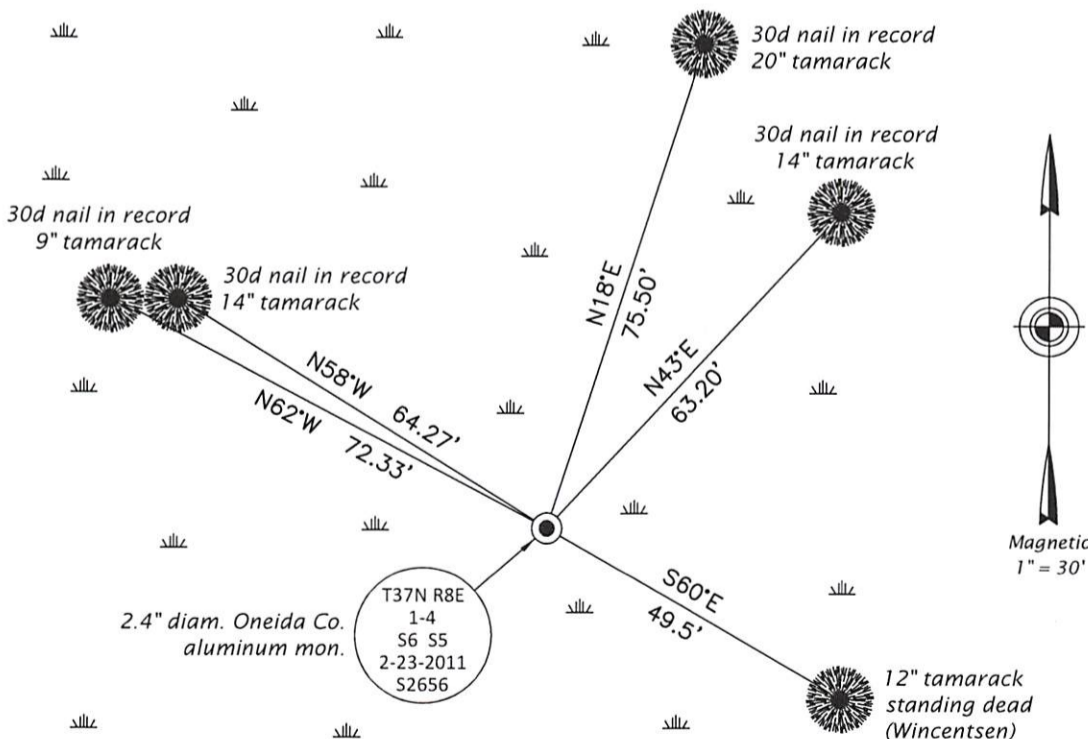
A complete history of the corner can be found on the previous land corner document(s). I accept the record activity as a true and faithful perpetuation or reestablishment of the original corner location and further perpetuate it as described below.

To augment the record: On page 104 of book 1, Wincentsen identifies the corner ("J") as a 5" x 5" post witnessed by a tamarack 8" S60°E, 75.2 lks.

May 14, 2021: I found and accepted the record monument, a 2.4" diam. aluminum pipe with a 3.3" diam. Oneida Co. aluminum cap projecting 42" above the bog surface. I cut the 60" long monument to 36" and reset it such that the cap projects 2" above the bog surface. I found or established accessories as shown below. I found a white vinyl sign post bearing North, 0.7 ft.

The coordinate value shown has been verified by at least one of the following methods: 1) comparison to a previously GNSS determined published value; 2) the value is the average of two or more GNSS observations at a markedly different time; 3) one or more distances were measured back to the GNSS observed corner from temporary GNSS observed offset locations.

(c)(d)(e) Plan view of corner with ties to at least 4 witness monuments. If in disagreement with previously established corner, show the distances between the two corners and also indicate the ties to the disputed.



REGISTER OF DEEDS OFFICE
 ONEIDA COUNTY
 FILED

JUN 23 2021

KYLE J. FRANSON
 REGISTER OF DEEDS

(i) I, Jeffrey W. Austin, Professional Land Surveyor No. S-1885, hereby certify that the corner location on this record was determined by me or under my direction and control and that this U.S. Public Land Survey Monument Record is correct and complete to the best of my knowledge and belief.

[Handwritten Signature]
 Signature
 MAY 20, 2021
 Date