



# U.S. PUBLIC LAND SURVEY MONUMENT RECORD

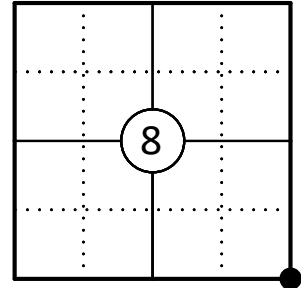
This form is intended and designed to fulfill all requirements of Wisconsin Administrative Code, Chapter A-E 7.08 U.S. Public Land Survey Monument Record (3) (a)(b)(c)(d)(e)(f)(g)(h)(i).

Oneida County  
Land Information Office  
Filed  
**10/3/2025**

**A-E 7.08(3)(a) Identity of the corner:**

SE Corner Section 8  
Township 37 North  
Range 8 East  
Town of Newbold  
County of Oneida

Corner ID: 3708080000



**Original Corner Information:**

Original Surveyor: William E. Daugherty      Original B.T.'s: 10" Yellow Pine - S01°E, 5 links  
Date of Survey: July 1863                              9" Yellow Pine - N34°W, 17 links

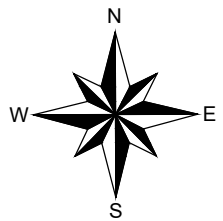
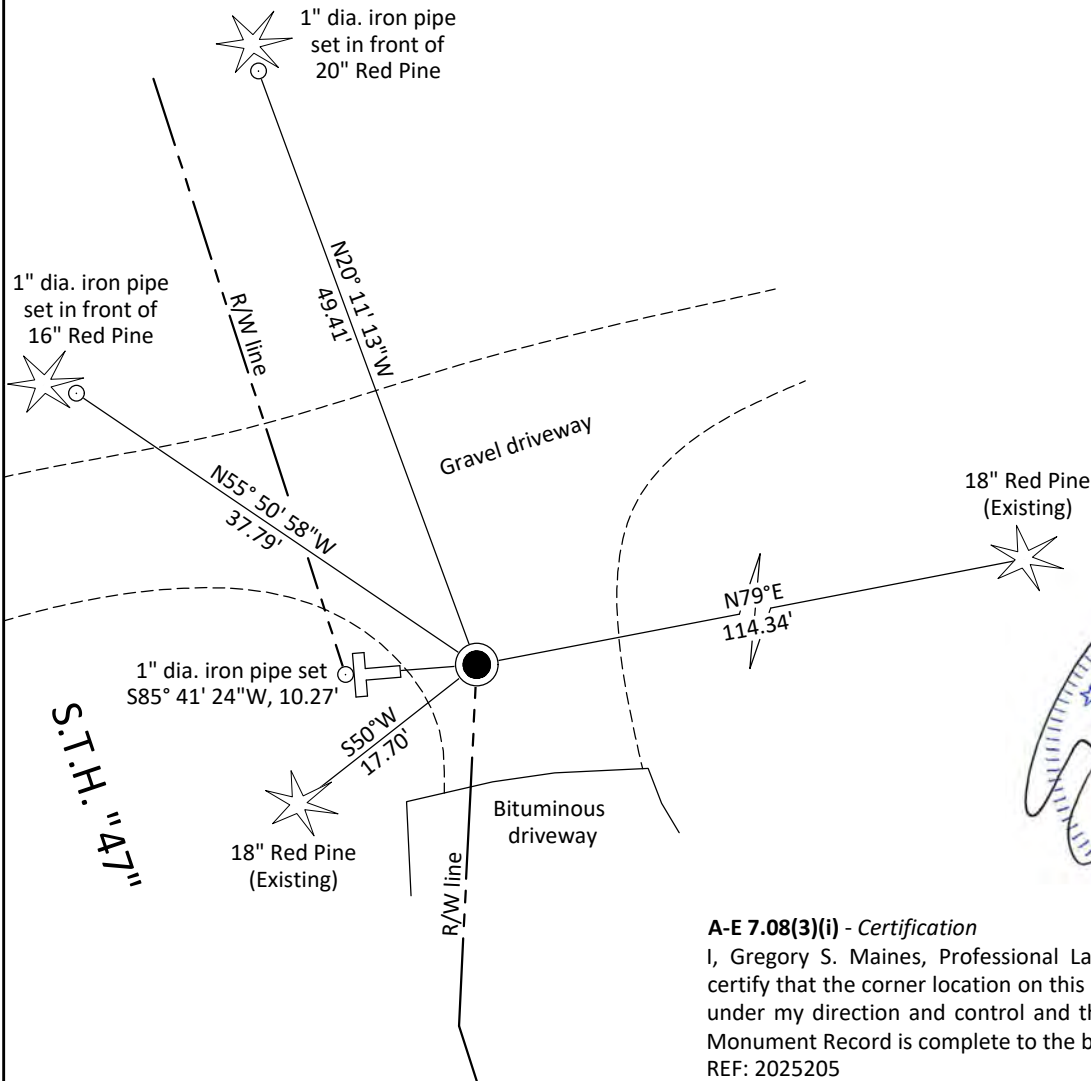
**A-E 7.08(3)(b)(e)(f)(g) Describe any record evidence, monument evidence, occupational evidence, testimonial evidence or any other material evidence considered. Describe any discrepancy between the corner restored and any previously established location. State whether the corners was restored through acceptance of obliterated evidence, a found perpetuated location, or determined by proportionate methods.**

For previous corner history see U.S. Public Land Survey Monument Record by Milo E. Stefan dated May 12, 1988.

03/03/2025 I found and accepted an Oneida County aluminum monument with a 3" dia. cap stamped to identify the corner buried 8" in a gravel driveway with a 1-3/4" dia iron pipe next to it (0.3 feet to the west). I found two existing existing bearing trees one of which is dead (Red Pine - N78°W, 13.1). I made one new bearing tree and set three additional reference monuments to witness the corner as shown below.

**A-E 7.08(3)(c)(d)(e)(h) Plan view of corner with ties to at least four witnesses. If in disagreement with previously established corner, show the distances between the two corners and also indicate the tie to the disputed corner. Distances and directions to other PLSS used as evidence or for proportioning.**

Bearings given to the nearest second are Oneida County Grid. All other bearings are magnetic



- \* Vinyl "T" post 10' west of corner.
- \* Distances to bearing trees are to nail in side.
- \* Sketch is not to scale



**A-E 7.08(3)(i) - Certification**

I, Gregory S. Maines, Professional Land Surveyor No. 2729, hereby certify that the corner location on this record was referenced by me or under my direction and control and that this U.S. Public Land Survey Monument Record is complete to the best of my knowledge and belief.  
REF: 2025205

Index No.: