

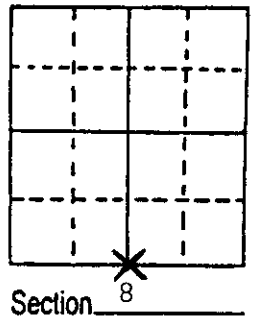
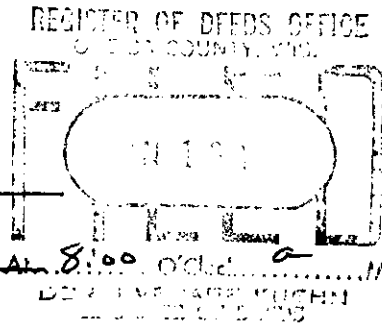
# U.S. PUBLIC LAND SURVEY MONUMENT RECORD

**Note:** This form is intended and designed to fulfill all requirements of Wisconsin Administrative Code, Chapter A-E 5.02, U.S. Public Land Survey Monument Record (3) (a) (b) (c) (d) (e) (f) (g) (h) (i). An additional sheet may be added if necessary to conform with said requirements.

(a) Corner location: Township 37 North  
 Range 8 East/West

Town/City/Village Newbold

County Oneida



(b) (f) (g) (h) Description of monument found at this corner and if it was accepted, state all evidence (material, testimonial, occupational, plats, records, other monuments) used as a basis for accepting. If not accepted or if nothing was found, state evidence used as basis for establishing location. If reestablished through lost corner proportionate methods, indicate all monuments, distances and directions used to establish.

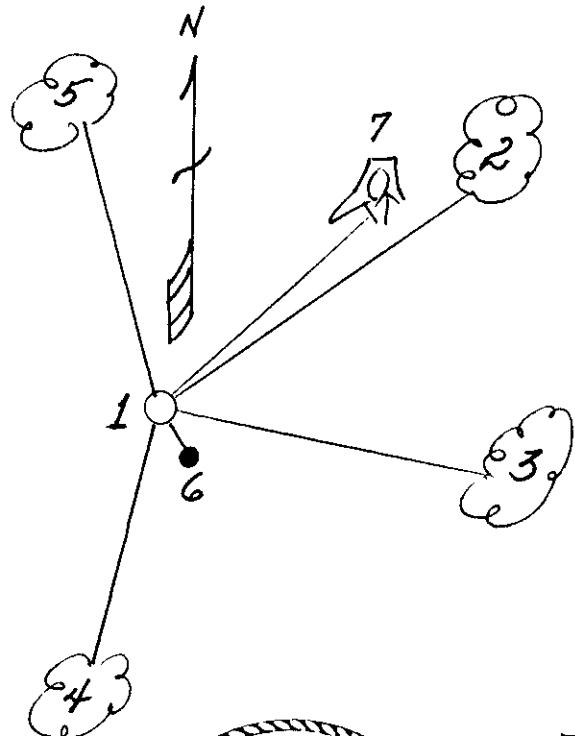
July 1863, Wm. E. Daugherty at 39.90 chains set post for 1/4 corner:  
 10" Aspen, S18°E, 11 links (7.26')  
 10" Maple, N49°W, 18 links (11.88')  
 August 23, 1949 F.R. Wincentzen found 5" x 5" post with Vaughn's NE Pine BT, N61°E, 59 links (38.94')  
 December 3, 1987 Milo E. Stefan found 1" x 24" iron pipe with 3" x 3" x 4" Oak post in mound of stone. Vaughn's BT, a pine stump, face burnt out.  
 I accept this iron pipe as the best remaining evidence of this corner.

(c) (d) (e) Plan view of corner with ties to at least 4 witness monuments. If in disagreement with previously established corner, show the distances between the two corners and also indicate the ties to the disputed corner.

1. 2" x 36" Oneida County aluminum monument in mound of stone.
- \*2. 6" Red Maple, N66°E, 56.57'
- \*3. 8" White Birch, S81°E, 45.06'
- \*\*4. 2" Red Oak, S14°W, 39.36'
- \*5. 6" White Birch, N15°W, 39.34'
6. Plastic sign post, SE, 1.4'

\*BTs scribed "1/4S BT"  
 \*\*BT scribed "X BT"  
 Distances measured to nail in side of tree.

7. 12" Red Pine stump, N61°E, 40.10'



(i) I, Milo E. Stefan  
 (type or print name) certify that the corner location on this record was determined by me or under my direction and control and that this U.S. Public Land Survey Monument Record is correct and complete to the best of my knowledge and belief.

Milo E. Stefan 1/4/88  
 Signature Date



Index No. J-7

3708080020

U.S. PUBLIC LAND SURVEY MONUMENT RECORD ADDENDUM

Note: This form is intended and designed to fulfill all requirements of the Wisconsin Administrative Code, Chapter A-E 7.08 U.S. Public Land Monument Record (3)(a)(b)(c)(d)(e)(f)(g)(h)(i). An additional sheet may be added if necessary to conform with said requirements.

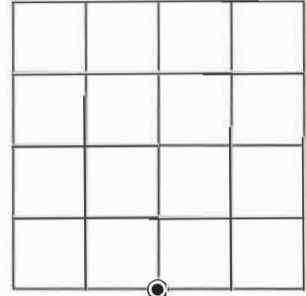
(a) CORNER LOCATION:

South 1/4 Corner of Section 8  
Township 37 North  
Range 8 East  
Town of Newbold  
County of Oneida

North:  
East:  
Datum:  
GNSS Method:  
GNSS Control:

(RECORDING AREA)

SECTION 8



(b) HISTORY OF ORIGINAL CORNER ESTABLISHMENT

Original Surveyor:  
Date of Survey: Commenced  
Completed  
Original B.T.'S

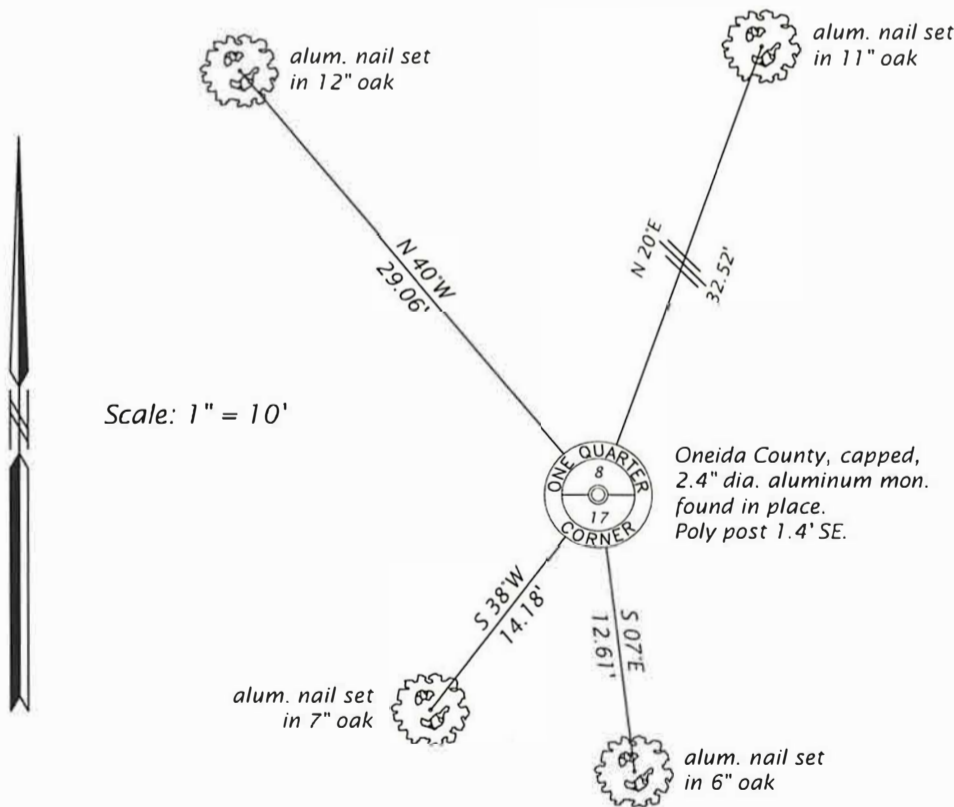
SEE PREVIOUS U.S.P.L.S. MONUMENT  
RECORD DATED JANUARY 4, 1988

(f)(g)(h) DESCRIPTION OF MONUMENT FOUND AT THIS CORNER AND IF IT WAS ACCEPTED, STATE ALL EVIDENCE (MATERIAL, TESTIMONIAL, OCCUPATIONAL, PLATS, RECORD, OTHER MONUMENTS) USED AS A BASIS FOR ESTABLISHING LOCATION. IF NOT ACCEPTED OR IF NOTHING WAS FOUND, STATE EVIDENCE USED AS BASIS FOR ESTABLISHING LOCATION. IF REESTABLISHED THROUGH LOST CORNER PROPORTIONATE METHODS, INDICATE ALL MONUMENTS, DISTANCES AND DIRECTIONS USED TO ESTABLISH. INDICATE TYPE OF MONUMENT AND SIGN POST FOUND OR SET.

This is a perpetuation of a previous U.S.P.L.S. Monument Record by Milo E. Stefan, RLS, dated January 4, 1988, and filed in the office of the Oneida County Register of Deeds. A complete history of the corner can be found on the previous monument record. I accept the previous location as a true and faithful perpetuation or reestablishment of the original corner location and further perpetuate it as follows.

December 13, 2023 - James D. Rein, PLS No. 1234. We found, and I accepted, the Oneida County, capped, aluminum monument set by Stefan in 1987. All of Stefan's bearing trees are now gone. See below for updated references.

(c)(d)(e) PLAN VIEW OF CORNER WITH TIES TO AT LEAST 4 WITNESS MONUMENTS. IF IN DISAGREEMENT WITH PREVIOUSLY ESTABLISHED CORNER, SHOW THE DISTANCE BETWEEN THE TWO CORNERS AND ALSO INDICATE THE TIES TO THE DISPUTED CORNER.



(i) I, JAMES D. REIN, PROFESSIONAL LAND SURVEYOR NO. S-1234 HEREBY CERTIFY THAT THE CORNER LOCATION ON THIS RECORD WAS DETERMINED BY ME OR UNDER MY DIRECTION AND CONTROL AND THAT THIS U.S. PUBLIC LAND SURVEY MONUMENT RECORD IS CORRECT AND COMPLETE TO THE BEST OF MY KNOWLEDGE AND BELIEF.



*James D. Rein*  
SIGNATURE

5/14/24  
DATE

INDEX NO. J-7