

CERTIFIED LAND CORNER RESTORATION

Index No. J-17

State of Wisconsin }
County of ONEIDA } ss.

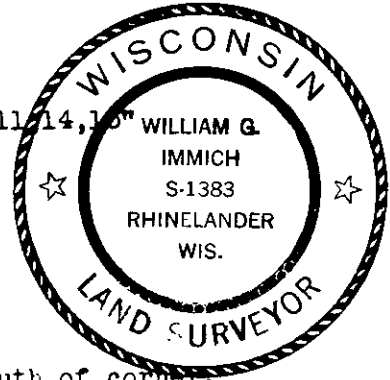
History of original corner establishment:

Set by William Daugherty July 1863

" North between 14 & 15 V 7° E , 80.00 Set post corner to Sec. 10, 11, 14, 15

W. Pine 15 N 5 W 11

W. Pine 10 S 7 E 35



3708100000

I WILLIAM IMMICH, do hereby certify that on the _____ day of APRIL, 1981, I found evidence of the NORTHEAST corner of SECTION 15 Township 37, North, Range 8 EAST, Fourth Principal Meridian, as described hereon; and that from this evidence I established a new monument and accessories as described hereon to perpetuate the original location of this corner.

Description of corner evidence found:

Found P.K. nail in road, found reference pipe 33.00' north and south of corner.
Found bearing tree 6" birch N 34° W 41.5' leaning, cannot find record of tree.
Robert Bandow - found reference pipe in place 1962

Resident witnesses.

William Bandow - found reference pipe in place- set P.K. nail 1977

MIKE ROMPORTL

F.R. Wincentzen - shows distance to corner on map dated Aug. 3, 1947 does not describe corner.

MARK HENDRICKSON

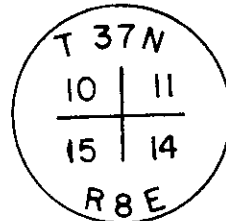
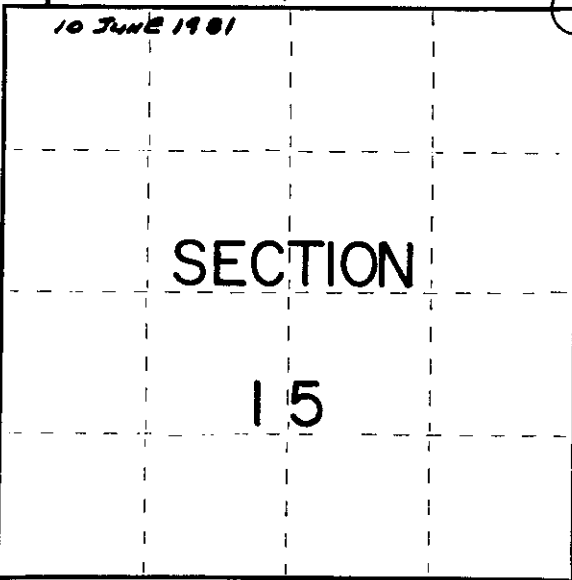
Description of monument and accessories I established to perpetuate the original location of this corner.

COMPARED WITH RECORD DATA AND FOUND TO BE CORRECT & ACCEPTED.

Set aluminum Oneida County monument 2" below road surface - stamped as shown.

Robert H. Wink, ONEIDA COUNTY SURVEYOR

BEARING TREES



- 5" maple N 33° W 54.28'
- 4" maple N 65° E 73.80'
- 3" maple S 65° E 69.40'
- 3" maple S 38° W 43.46'

Dated at RHINELANDER, Wis., this 12th day of MAY, 1981.

Signature William Immich Title REGISTERED LAND SURVEYOR Registration No. 1383
(County Surveyor, Registered Land Surveyor, or other duly authorized official)

Office of Register of Deeds, County of Oneida, I hereby certify that the within instrument was filed in this office for record on the 21st day of December, 1981 at 4:12 o'clock A M.

Doris Verage Kuehn
(Register of Deeds)

○ = Corner monument restored.

By _____ Deputy

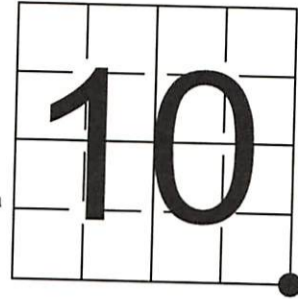
FORM 985 H. C. MILLER CO., MILWAUKEE

U S PUBLIC LAND SURVEY MONUMENT RECORD

NOTE: This form is intended and designed to fulfill all requirements of Wisconsin Administrative Code, Chapter A-E 7.08 U.S. Public Land Survey Monument Record (3) (a-i)

A-E 7.08(3)(a) Identity of corner
 SOUTHEAST CORNER OF SECTION 10
 TOWNSHIP 37 NORTH
 RANGE 08 EAST OF THE 4TH PM
 TOWN OF PINE LAKE
 COUNTY OF ONEIDA

WISCORS - ONEIDA COUNTY
 N: 188,749.501 USft
 E: 248,826.563 USft
 Datum: NAD83 (2011)
 GNSS Method RTN - Direct
 GNSS Control WISCORS VRS



The coordinate value shown has been verified by the average of two or more GPS observations at a markedly different time.

A-E 7.08(3)(b) Description of any record evidence, monument evidence, occupational evidence, testimonial evidence, or any other material evidence.

Original Surveyor: William E. Daugherty

REGISTER OF DEEDS OFFICE
 ONEIDA COUNTY
 FILED

Date of Original Survey Commenced: July 17, 1863
 Completed: July 29, 1863

JAN 19 2022

Original Accessories:
 White Pine 15 N. 5° W. 11
 White Pine 10 S. 7° E. 35

See Previous Monument Record:
 Index No. J-17

KYLE J. FRANSON
 REGISTER OF DEEDS

May 12, 1981 - Surveyor 1383 - William G. Immich - Set aluminum Oneida County Monument, 2" below road surface.

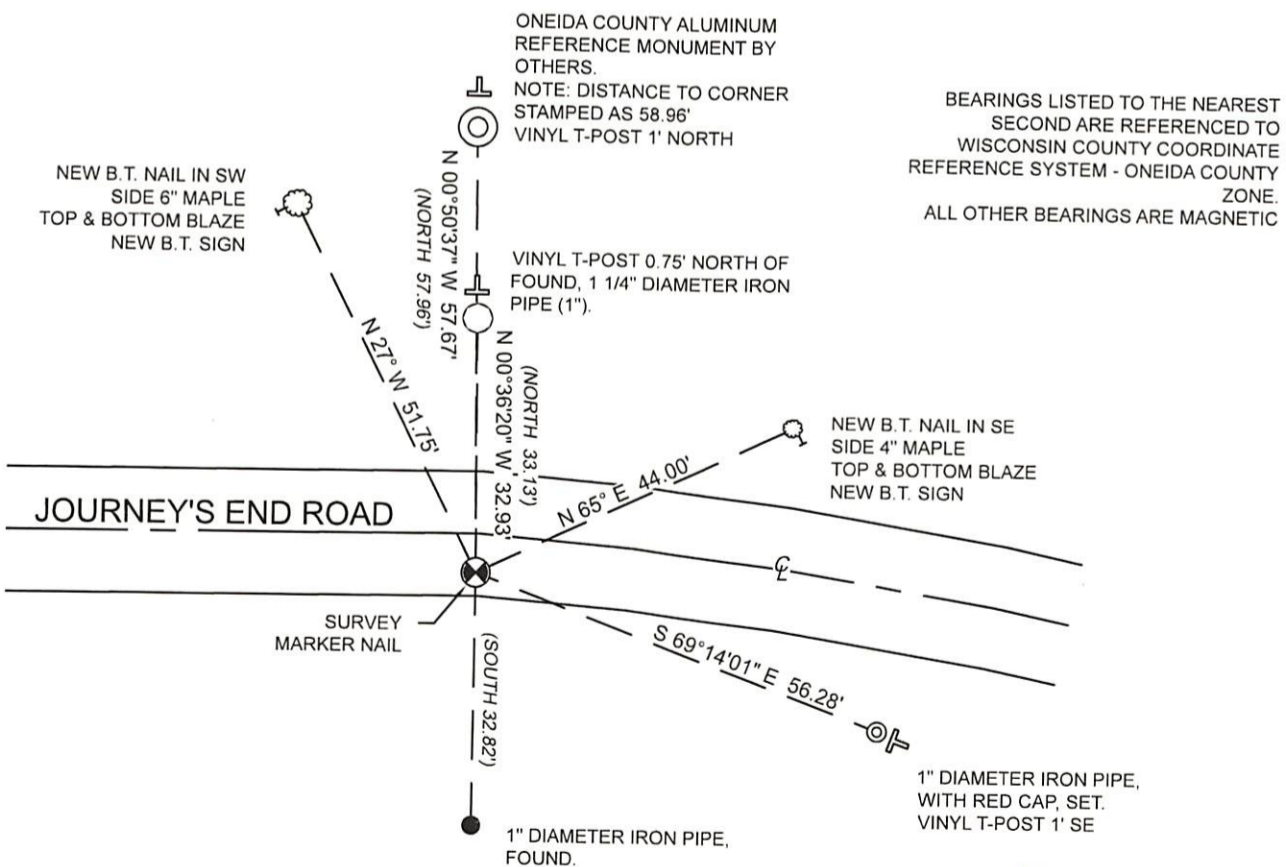
April 20, 1994 - Surveyor 1558 - Milo E. Stefan - placed a railroad spike in the road surface.

A-E 7.08(3)(f) The corner is a found perpetuated location.

May 26, 2021 - In preparation of a road reconstruction project, I found a Oneida County aluminum monument, stamped to identify corner location, ±12" below the surface of Journey's End Road. I also found 3 of Stefan's witnesses intact as shown below.

November 04, 2021 - I returned after completion of the reconstruction project and found the monument to be the same and intact, and established new witnesses as shown below. I set a survey marker nail in the road surface.

A-E 7.08(3)(c)(d)(e)(h) Plan view of corner with references to at least 4 witness monuments. If in disagreement with previously established corner, show the distances between the two corners and also indicate the ties to the disputed. The directions and distances to other public land survey corners used as evidence or used for determining the corner location.



A-E 7.08(3)(i) I, Jeffrey L. DeMuth, Professional Land Surveyor No. S-2656, hereby certify that the corner location on this record was determined by me or under my direction and control and that this U.S. Public Land Survey Monument Record is correct and complete to the best of my knowledge, and belief



SIGNATURE

December 30, 2021
 DATE

43708100000