

CERTIFIED LAND CORNER RESTORATION

Index No. J-15

State of Wisconsin }
County of ONEIDA } ss.

History of original corner establishment:

Set by William Daugherty July 1863
" East random line between Sections 10 & 15 V 7° 25' E
79.92' intersected Section line 47 lk north of post
West corrected V 7° 5' E 39.96 set 1/4 post
Y. Pine 12 N 36 E 68
birch 6 N 67 W 17



3708160020

I, WILLIAM IMMICH, do hereby certify that on the.....day of APRIL, 1981, I found evidence of the NORTH 1/4 corner of SECTION 15 Township 37, North, Range 8 EAST, Fourth Principal Meridian, as described hereon; and that from this evidence I established a new monument and accessories as described hereon to perpetuate the original location of this corner.

Description of corner evidence found:

Found 1" iron pipe in place, tall 2" iron pipe next to it also a squared wooden post.

Resident witnesses:

MIKE ROMPORTL

MARK HENDRICKSON

F.R. Wincentzen - found iron pipe- August 1947 says it is Vaughn's cannot find record of Vaughn

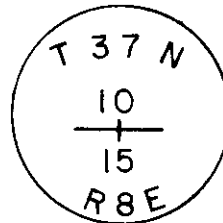
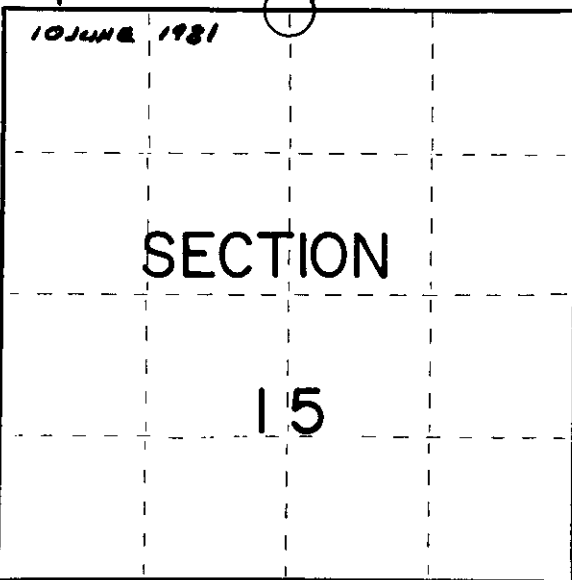
Sy. M. Poskie - found iron pipe - tied plat into corner June 1962

Found no bearing trees

Description of monument and accessories I established to perpetuate the original location of this corner.

Set aluminum Oneida County Monument on top edge of cut of Journey End Road - pipe 4" above ground - stamped as shown.

COMPARED WITH RECORD DATA AND FOUND TO BE CORRECT & ACCEPTED.
Robert H. Hines ONEIDA COUNTY SURVEYOR



BEARING TREES

- 5" white pine S 14° W 10.58'
- 6" white pine N 2° W 52.96'
- 18" oak S 73° E 47.32'
- 10" white pine N 63° W 73.33'
- center line of black top road North 13.5'

Dated at RHINELANDER, Wis., this 12th day of MAY, 1981.

Signature William Immich Title REGISTERED LAND SURVEYOR Registration No. 1383
(County Surveyor, Registered Land Surveyor, or other duly authorized official)

Office of Register of Deeds, County of Oneida, I hereby certify that the within instrument was filed in this office for record on the 21st day of December, 1981 at 4:10 o'clock a M.

Doris Verage Kuehn
(Register of Deeds)

By.....Deputy

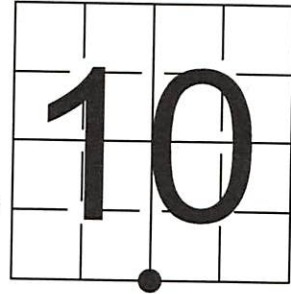
○ = Corner monument restored.

U S PUBLIC LAND SURVEY MONUMENT RECORD

NOTE: This form is intended and designed to fulfill all requirements of Wisconsin Administrative Code, Chapter A-E 7.08 U.S. Public Land Survey Monument Record (3) (a-i)

A-E 7.08(3)(a) Identity of corner
 SOUTH 1/4 CORNER OF SECTION 10
 TOWNSHIP 37 NORTH
 RANGE 08 EAST OF THE 4TH PM
 TOWN OF PINE LAKE
 COUNTY OF ONEIDA

WISCRS - ONEIDA COUNTY
 N: 188,624.188 USft
 E: 246,037.223 USft
 Datum: NAD83 (2011)
 GNSS Method RTN - Direct
 GNSS Control WISCORS VRS



The coordinate value shown has been verified by the average of two or more GPS observations at a markedly different time.

A-E 7.08(3)(b) Description of any record evidence, monument evidence, occupational evidence, testimonial evidence, or any other material evidence.

Original Surveyor: William E. Daugherty

Date of Original Survey Commenced: July 17, 1863
 Completed: July 29, 1863

REGISTER OF DEEDS OFFICE
 ONEIDA COUNTY
 FILED

JAN 19 2022

Original Accessories:

Yellow Pine 12 N. 36° E. 68
 Birch 6 S. 67° W. 17

See Previous Monument Record:
 Index No. J-15

KYLE J. FRANSON
 REGISTER OF DEEDS

May 12, 1981 - Surveyor 1383 - William G. Immich - Set aluminum Oneida County Monument

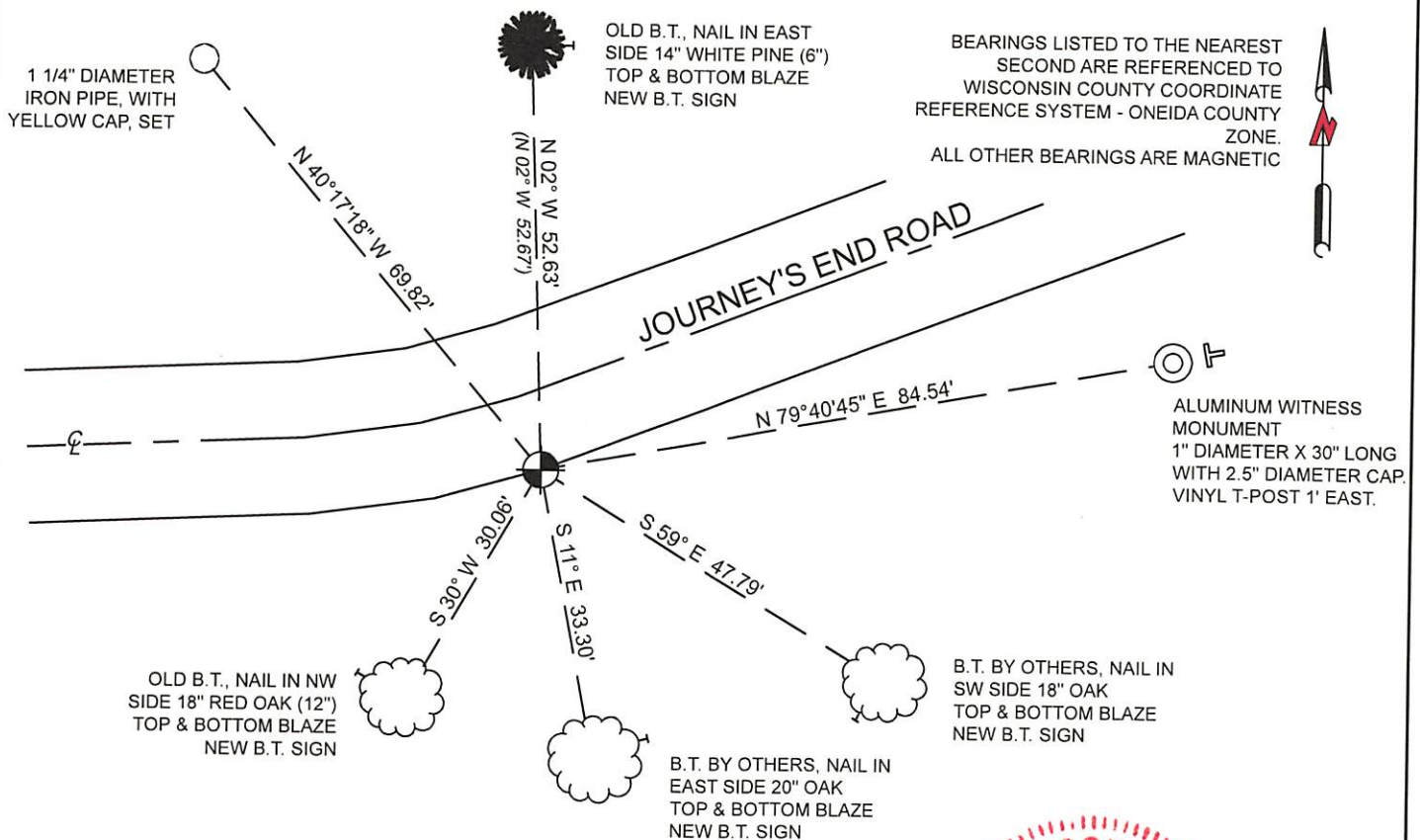
May 10, 1994 - Surveyor 1558 - Milo E. Stefan - replaced damaged monument with 2" x 36" aluminum monument in a mound of stone.

A-E 7.08(3)(f) The corner is a found perpetuated location.

May 26, 2021 - In preparation of a road reconstruction project, I found a Oneida County aluminum monument, stamped to identify corner location, on the south edge of Journey's End Road. I also found 2 of Stefan's witnesses intact as shown below.

November 04, 2021 - I returned after completion of the reconstruction project and found the monument to be the same and intact, and established new witnesses as shown below.

A-E 7.08(3)(c)(d)(e)(h) Plan view of corner with references to at least 4 witness monuments. If in disagreement with previously established corner, show the distances between the two corners and also indicate the ties to the disputed. The directions and distances to other public land survey corners used as evidence or used for determining the corner location.



A-E 7.08(3)(i) I, Jeffrey L. DeMuth, Professional Land Surveyor No. S-2656, hereby certify that the corner location on this record was determined by me or under my direction and control and that this U.S. Public Land Survey Monument Record is correct and complete to the best of my knowledge, and belief

Jeffrey L. DeMuth
 SIGNATURE

December 30, 2021
 DATE



43708100020