

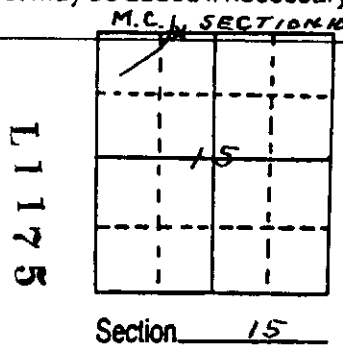
L1175

U.S. PUBLIC LAND SURVEY MONUMENT RECORD

Note: This form is intended and designed to fulfill all requirements of Wisconsin Administrative Code, Chapter A-E 7.08 U.S. Public Land Survey Monument Record (3) (a) (b) (c) (d) (e) (f) (g) (h) (i). An additional sheet may be added if necessary to conform with said requirements.

(a) Corner location: Township 37 North
Range 8 East/West
Town/City/Village PINE LAKE
County ONEIDA

RECEIVED & FILED #
Oneida County Surveyor's Office
Date JAN 10 1992
By [Signature]



(b) (f) (g) (h) Description of monument found at this corner and if it was accepted, state all evidence (material, testimonial, occupational, plats, records, other monuments) used as a basis for accepting. If not accepted or if nothing was found, state evidence used as basis for establishing location. If reestablished through lost corner proportionate methods, indicate all monuments, distances and directions used to establish. Indicate type of monument found or set and sign post.

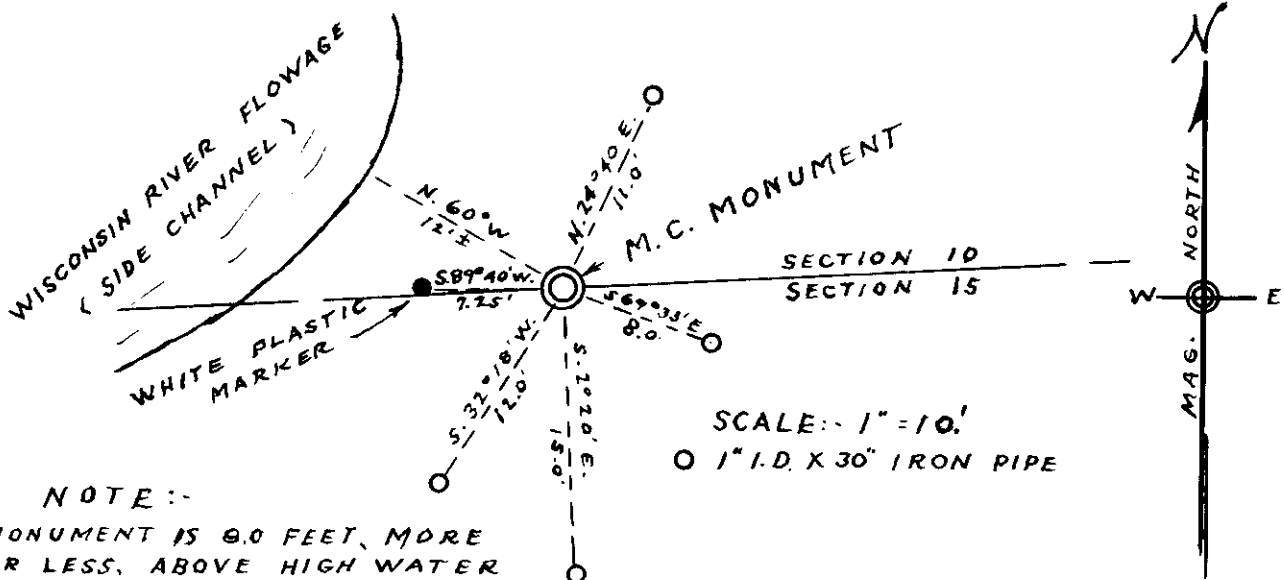
SAID PERPETUATED MEANDER CORNER, BETWEEN SECTIONS 10 AND 15, T.37 N., R.8 E., HAD BEEN MARKED BY A 5/8 INCH DIAMETER REINFORCING STEEL ROD, 20 INCHES LONG, AND BEING POINTED AS THOUGH IT HAD BEEN DONE BY A BLACKSMITH; ALSO TWO 1/2 INCH I.D. IRON PIPE WERE SET BESIDE THE REINFORCING STEEL.

NO BEARING TREES WERE FOUND, BUT I PERSONALLY KNOW THAT SAID CORNER HAS BEEN IN PLACE FOR 35 YEARS, OR MORE. I ACCEPTED AND USED SAID CORNER WHILE PERFORMING LAND SURVEYING IN THE SE 1/4-SW 1/4 OF SECTION 10 IN THE EARLY 1950'S. FURTHER, EDWARD POSPYCHALA AND I, ACCEPTED AND USED SAID CORNER WHEN WE SURVEYED AND SUBDIVIDED GOV'T. LOTS 2 AND 3 IN SECTION 15, T.37 N., R.8 E., IN THE YEAR OF 1962.

SAID CORNER HAS NEVER BEEN QUESTIONED OR DISPUTED, TO MY KNOWLEDGE OR BELIEF.

NOTE:- SAID REINFORCING STEEL HAS BEEN PLACED WITHIN THE MONUMENT.

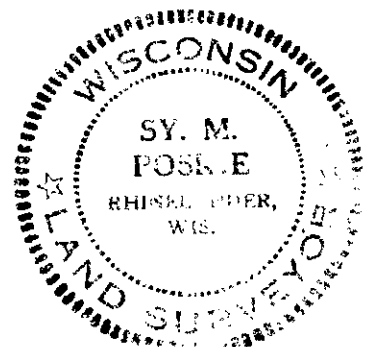
(c) (d) (e) Plan view of corner with ties to at least 4 witness monuments. If in disagreement with previously established corner, show the distances between the two corners and also indicate the ties to the disputed corner.



NOTE:-
MONUMENT IS 9.0 FEET, MORE OR LESS, ABOVE HIGH WATER & 13 FEET, MORE OR LESS, FROM ORIGINAL SIDE CHANNEL. (BEFORE FLOODING)

(i) I, SY. M. POSKIE
(type or print name) certify that the corner location on this record was determined by me or under my direction and control and that this U.S. Public Land Survey Monument Record is correct and complete to the best of my knowledge and belief.

SY. M. Poskie 12-16-91
Signature Date



WIS NO S-00140

3708100023
Stamp

L1175

L1175

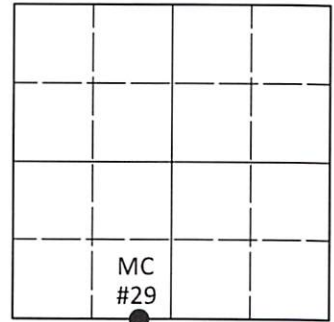
Index No. J-14,15

U.S. PUBLIC LAND SURVEY MONUMENT RECORD

Note: This form is intended and designed to fulfill all requirements of Wisconsin Administrative Code, Chapter A-E 7.08 U.S. Public Land Survey Monument Record (3)(a-i).

(a) CORNER LOCATION
 Meander Cor. of Secs. 10 & 15
 Township 37 North
 Range 8 East of the 4th P.M.
 Town of Pine Lake
 County of Oneida

WISCRS - Oneida County
 N: 188,572.81 USft
 E: 245,082.56 USft
 Datum: NAD 83(2011) ep. 2010.00
 GNSS Method: RTN - Direct
 GNSS Control: WISCORS VRS



Sec. 10, T. 37 N., R. 8 E.

(b)(f)(g)(h) Description of monument found at this corner and if it was accepted, state all evidence (material, testimonial, occupational, plats, records, other monuments) used as a basis for accepting. If not accepted or if nothing was found, state evidence used as basis for establishing location. If re-established through lost corner proportionate methods, indicate all monuments, distances and directions used to establish. Indicate type of monument and sign post found or set.

This record is a perpetuation of the following land corner document(s):

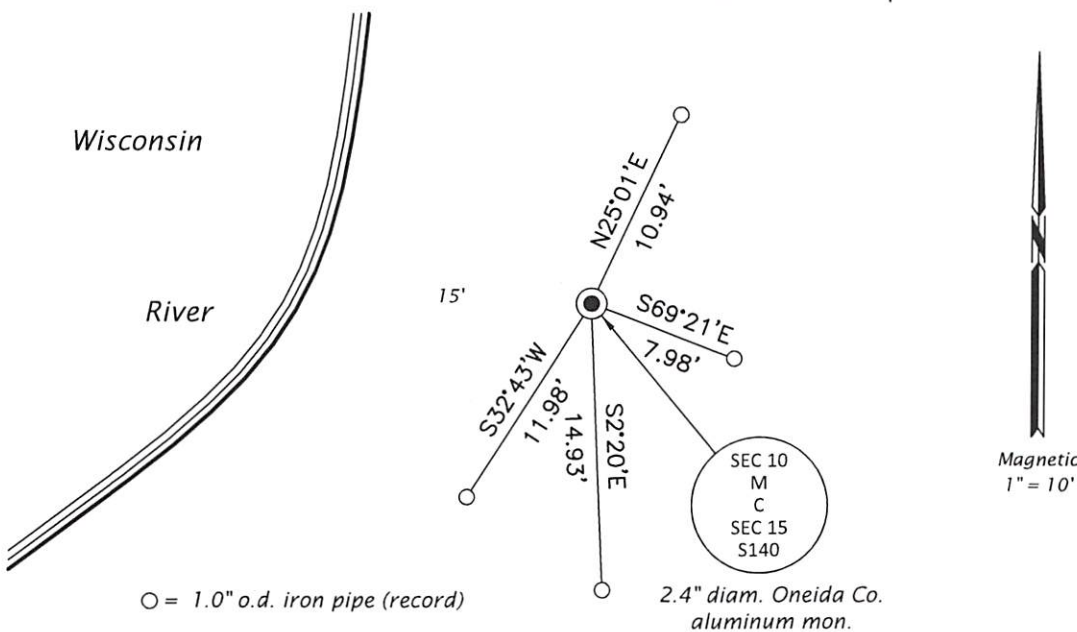
Dec. 16, 1991: USPLS Monument Record by Sy M. Poskie, filed in Oneida County

A complete history of the corner can be found on the previous land corner document(s). I accept the record activity as a true and faithful perpetuation or reestablishment of the original corner location and further perpetuate it as described below.

Feb. 16, 2022: I found and accepted the record monument, a 2.4" diam. aluminum pipe, firmly set, with a 3.3" diam. Oneida Co. aluminum cap flush with the ground surface. I found or established accessories as indicated below. I found a white vinyl sign post bearing West, 7.5 ft.

The coordinate value shown has been verified by averaging two or more GNSS observations at markedly different times.

(c)(d)(e) Plan view of corner with ties to at least 4 witness monuments. If in disagreement with previously established corner, show the distances between the two corners and also indicate the ties to the disputed.



REGISTER OF DEEDS OFFICE
 ONEIDA COUNTY
 FILED

MAR 07 2022

KYLE J. FRANSON
 REGISTER OF DEEDS

(i) I, Jeffrey W. Austin, Professional Land Surveyor No. S-1885, hereby certify that the corner location on this record was determined by me or under my direction and control and that this U.S. Public Land Survey Monument Record is correct and complete to the best of my knowledge and belief.

 Signature

FEB. 23, 2022

 Date