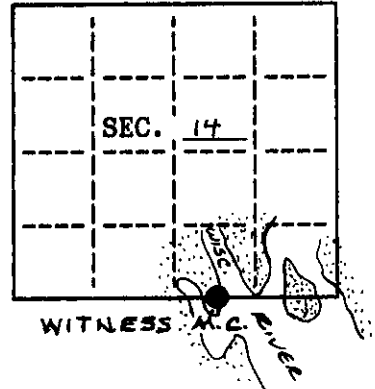


U.S. PUBLIC LAND SURVEY MONUMENT RECORD

Note: This form is intended and designed to fulfill all requirements of Wisconsin Administrative Code, Chapter X-8 7.08 U.S. Public Land Survey Monument Record (a)(b)(c)(d)(e)(f)(g)(h)(i). An additional sheet may be added if necessary to conform with said requirements.

(a) CORNER LOCATION: State Plane Coordinates
 MEANDER corner of Sec. 14 X _____
 Township 37 North Y _____
 Range 8 East Datum Base _____
 Town/City NEWBOLD County of ONEIDA

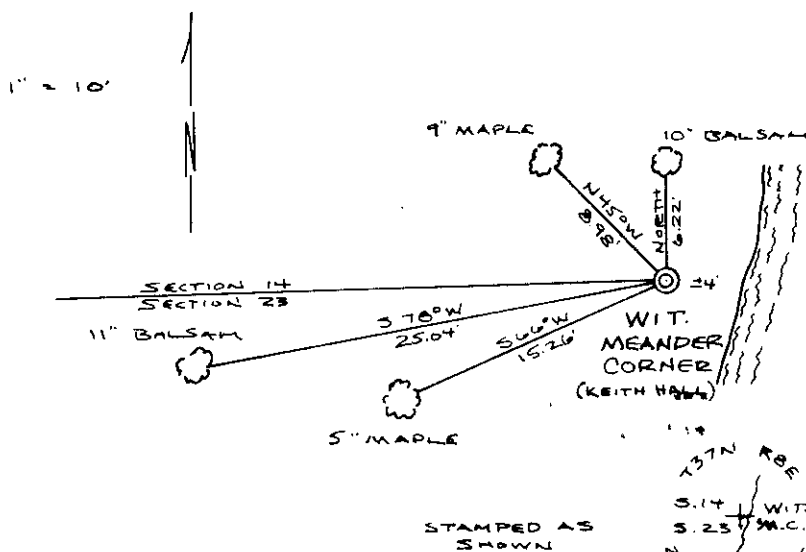


(b) HISTORY OF ORIGINAL CORNER ESTABLISHMENT
 Original Surveyor: WILLIAM E. DAUGHERTY Original B.T.'S
 Date of Survey: Commenced JULY 17, 1863 N/A
 Completed JULY 29, 1863

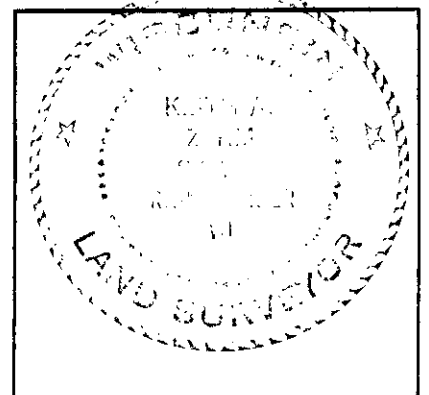
(b)(f)(g)(h) Description of monument found at this corner and if it was accepted, state all evidence (material, testimonial, occupational, plats, records, other monuments) used as a basis for accepting. If not accepted or if nothing was found, state evidence used as basis for establishing location. If reestablished through lost corner proportionate methods, indicate all monuments, distances and directions used to establish. Indicate type of monument and sign post found or set.

- JULY, 1863 - WM. DAUGHERTY RAN LINE COMMON TO SECTIONS 14 & 23. HE SET MEANDER POST ON RIGHT BANK OF RIVER AT 27.00 CH. WEST OF SE COR S.14, 53.00 CH EAST OF SW COR S.14.
- APRIL (F), 1902 - D.H. VAUGHN RAN NORTH LINE OF S23; HE DOES NOT MENTION FINDING 1/4 CORNER. FROM HIS NOTES, HE "WENT TO WEST BANK OF RIVER & SET MEANDER WHICH IS 52.65 E. OF NW CORNER AND IS 3.25 WEST OF ORG. BANK OF RIVER AND ON LINE BETWEEN SEC. CORNERS." HE MAKES TWO B.T.'S - B.PINE 7, N11 1/2 E, 46 1/2; B.PINE 7, S52 W, 12 1/2.
- ± 1950 - KEITH M. HALL STATES ON HIS MAP (L108 AS FILED W/ ONEIDA CO. SURVEYOR) "RAN EAST FROM NORTH 1/4 CORNER, SET MEANDER POST ON BANK OF WISCONSIN RIVER" (CONTINUED ON REVERSE)

(c)(d)(e) Plan view of corner with ties to at least 4 witness monuments. If in disagreement with previously established corner, show the distances between the two corners and also indicate the ties to the disputed.



REPLACED ANGLE IRON FENCE POST WITH AN ONEIDA CO. ALUM. MONUMENT.
 SET WHITE CARBONITE POST ± 1 EAST.
 MEASURED TO 60d NAILS SET IN SIDES OF EACH B.T.
 BEARINGS TAKEN WITH HAND-HELD COMPASS



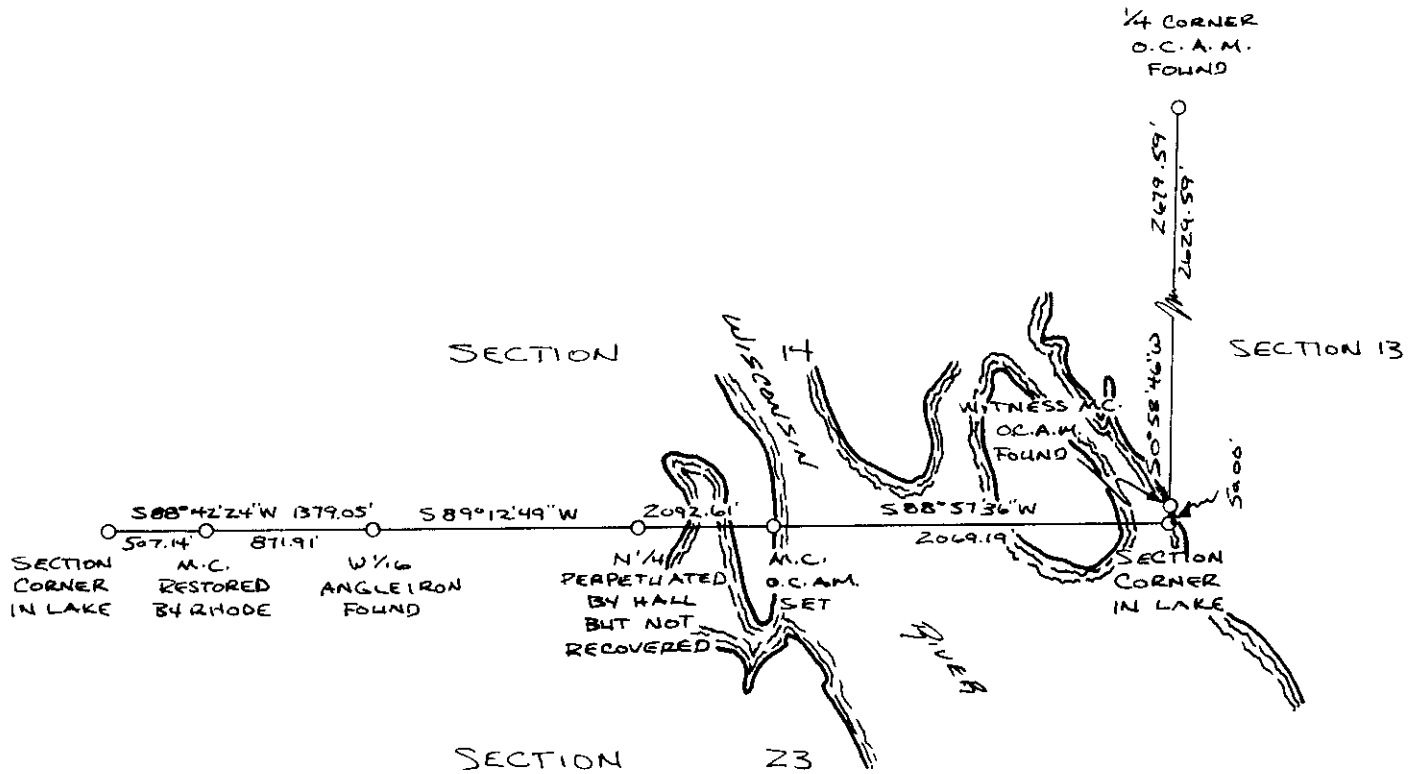
(i) I, KEITH A. ZARM R.L.S. - 2425 hereby certify that the corner location on this record was determined by me or under my direction and control and that this U.S. Public Land Survey Monument Record is correct and complete to the best of my knowledge and belief.

Signature _____ Date 28 JUL 02

3708140014

INDEX NO. N 19-20

MAY 29, 2002 - WHILE SURVEYING IN SECTIONS 14 & 23 I FOUND AN ANGLE IRON FENCE POST SIMILAR TO OTHER CORNERS FOUND IN SECTION 23 WHICH ARE KNOWN TO BE SET BY HALL WHEN HE SUBDIVIDED SAME. THOUGH NOT PART OF THE ORIGINAL SURVEY AND AS IT FITS RELATIVELY WELL ON THE SECTION LINE, I ACCEPT IT AS HALLS MEANDER CORNER. I REPLACED THE ANGLE IRON WITH AN ONEIDA Co. ALUM. MONUMENT AND WITNESSED IT AS SHOWN ON REVERSE.



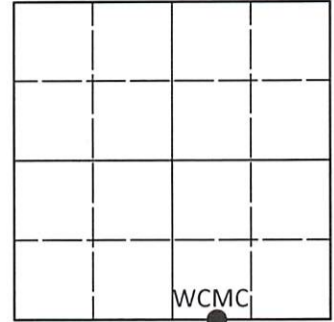
REGISTER OF DEEDS OFFICE
ONEIDA COUNTY, WIS.
MAY 29 2002
A: O'Clock M
THOMAS H. LEIGHTON
REGISTER OF DEEDS

U.S. PUBLIC LAND SURVEY MONUMENT RECORD

Note: This form is intended and designed to fulfill all requirements of Wisconsin Administrative Code, Chapter A-E 7.08 U.S. Public Land Survey Monument Record (3)(a-i).

(a) CORNER LOCATION
 Wit. Meander Cor. of Secs. 14 & 23
 Township 37 North
 Range 8 East of the 4th P.M.
 Town of Newbold
 County of Oneida

WISCRS - Oneida County
 N: 183,426.20 USft
 E: 252,400.05 USft
 Datum: NAD 83(2011) ep. 2010.00
 GNSS Method: RTN - Offset
 GNSS Control: WISCORS VRS



Sec. 14, T. 37 N., R. 8 E.

(b)(f)(g)(h) Description of monument found at this corner and if it was accepted, state all evidence (material, testimonial, occupational, plats, records, other monuments) used as a basis for accepting. If not accepted or if nothing was found, state evidence used as basis for establishing location. If re-established through lost corner proportionate methods, indicate all monuments, distances and directions used to establish. Indicate type of monument and sign post found or set.

This record is a perpetuation of the following land corner document(s):

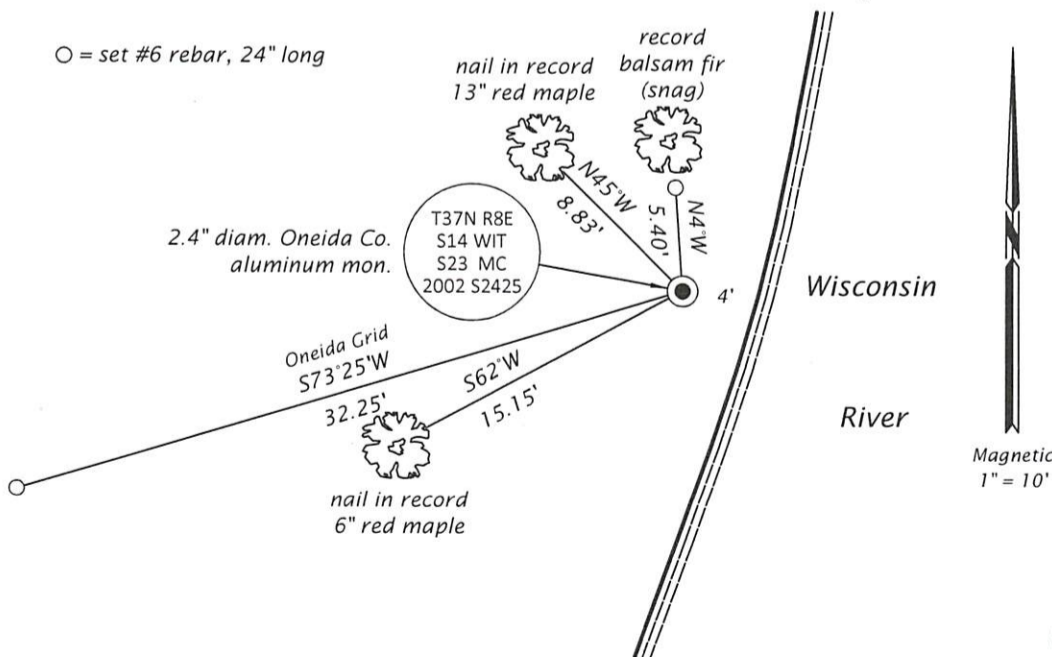
July, 2002: USPLS Monument Record by Keith A. Zarm, filed in Oneida County

A complete history of the corner can be found on the previous land corner document(s). I accept the record activity as a true and faithful perpetuation or reestablishment of the original corner location and further perpetuate it as described below.

July 19, 2023: I found and accepted the record monument, a 2.4" diam. aluminum pipe, firmly set, with a 3.3" diam. Oneida Co. aluminum cap projecting 5" above a collar of stone. The 11" fir record bearing tree is standing dead. I found or established accessories as indicated below. I found a white vinyl sign post bearing East, 0.5 ft.

The coordinate value shown has been determined by traversing from two or more GNSS offset points satisfying the accuracy requirements defined and qualified in the 2022 Oneida County Fee Schedule for USPLS Corners.

(c)(d)(e) Plan view of corner with ties to at least 4 witness monuments. If in disagreement with previously established corner, show the distances between the two corners and also indicate the ties to the disputed.



REGISTER OF DEEDS OFFICE
 ONEIDA COUNTY
 FILED

AUG 07 2023

KYLE J. FRANSON
 REGISTER OF DEEDS

(i) I, Jeffrey W. Austin, Professional Land Surveyor No. S-1885, hereby certify that the corner location on this record was determined by me or under my direction and control and that this U.S. Public Land Survey Monument Record is correct and complete to the best of my knowledge and belief.

 Signature

AUG. 1, 2023

 Date