

This form is intended to fulfill the requirements of Chapter A-E 7.08 (3)(a) thru (i) U.S. Public Land Survey Monument Location Record, Wisconsin Administrative Code. Use the reverse side of form for continuation.

**U.S. PUBLIC LAND SURVEY MONUMENT LOCATION RECORD**

Recorders Data

USPLS CORNER: EAST WITNESS MC SECTION: 23 TOWNSHIP: 37 NORTH RANGE: 08 EAST

NAME OF WATERWAY FOR M.C. CORNER: FETKE LAKE SECTION LINE: NORTH

(CITY)(VILLAGE)(TOWN) OF: NEWBOLD COUNTY OF: ONEIDA

Description of monument found or placed and all other evidence used as the basis for monument location; including monuments and related measurements required if the corner location was reestablished by lost corner proportionate methods. Also indicate name of original surveyor, original survey date and the corner monument, bearing trees, witness or other reference monuments established; including measured bearing and distance ties, from available records.

Found and accepted an old undisturbed and plumb 3/4" dia. iron pipe with uncapped top 2" above matted bog surface. I carefully pulled the iron pipe and set a standard 2" dia. by 72" long aluminum pipe monument with cast aluminum point and stamped Oneida County cap to 4" above bog mat surface in soil cavity left by the old iron pipe; the point of the new monument encountered sub-soil hardpan firmness. Old 30" long iron pipe left flat nearby. No other suitable BTs found at edge of Aspen woods 100'+ North and South of corner. Corner falls in a large wetland marsh area with sparse growth of Tamarack and is about 9' East of existing shoreline of Fetke Lake this date.

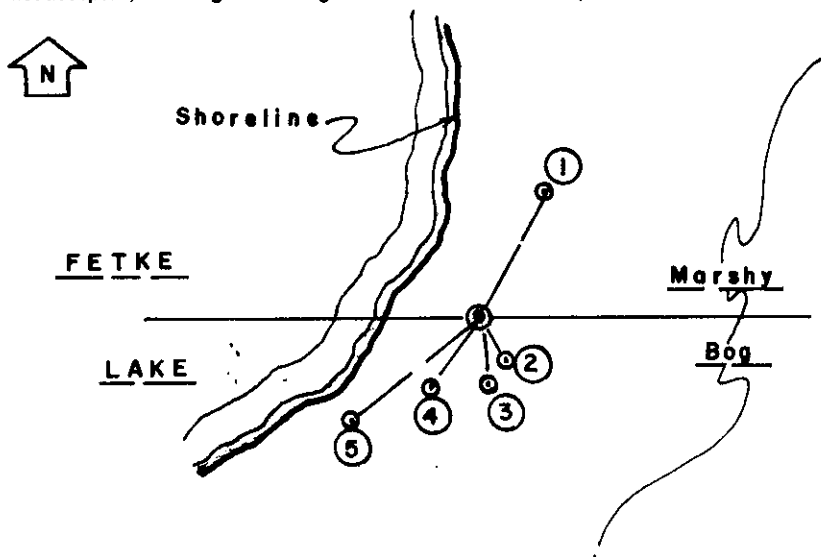
No original GLO survey notes apply as Fetke Lake was noted as a pond in 1863 and not meandered accordingly.

In 1975, Gerald B. Inman/RLS 891, legends a 1" dia. iron pipe as an MC at this corner per County Plat of Wildwood Shores filed in Oneida County records.

In 1979, Charles Winkler/RLS 1431, indicates a 1" dia. iron pipe found at this Witness MC corner per County Plat of Greenhill Estates filed as C-455 in Oneida County survey records.

This recovery completed September 27, 2001 and indirectly witnessed by adjacent owner Mark Juetten at dead-end of Wildwood Lane, upon my verbal advisement of the corner recovery.

Plan view map of monument location with bearing and distance ties to a minimum of four(4) described witness or reference monuments of concrete, natural stone, iron, live bearing trees or equivalent material. If applicable, also show a minimum of two(2) bearing and distance ties to any other monument found and not accepted; including the bearing and distance from the accepted monument.



**WITNESS MONUMENT TIES:**

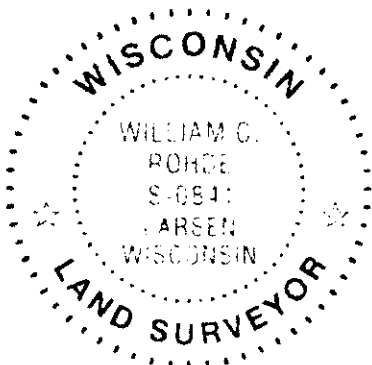
- ① - New BT 3" Tamarack N28°E at 14.35'.
- ② - New BT 3" Tamarack S27°E 5.50'.
- ③ - New BT 3" Tamarack S06°E 7.50'.
- ④ - New BT 4" Tamarack S34°W 9.25'.
- ⑤ - New BT 2.5" Tamarack S50°W at 17.20'.

Standard white poly 'T' corner marker post set 5" South of corner monument.

SCALE: 1" = 20'

Unless otherwise indicated, all bearing tree ties are to a .25" dia. by 2.5" long PK nail with a 1.25" dia. steel washer driven into unblazed right face and a .25" dia. by 2.5" long PK nail with a 2" dia. steel washer stamped BT is also driven into unblazed face of bearing tree at DBH; the basis for measured bearings is by compass to nearest degree and all tie distances are measured horizontal by steel tape corrected to nearest 1/100th feet at standard temperature of 68° F.

RLS SEAL:



LAND SURVEYOR CERTIFICATE:

I, William C. Rohde, hereby certify that I am duly licensed as a Professional Land Surveyor in the State of Wisconsin; that this USPLS monument location was determined by me and/or under my direct supervision and control; and that this U.S. Public Land Survey Monument Location Record is true and correct to the best of my knowledge and belief.

Signed *William C. Rohde*  
William C. Rohde RLS 841

		T 37 N	
		23	
		R 08 E	

SECTION LOCATION MAP

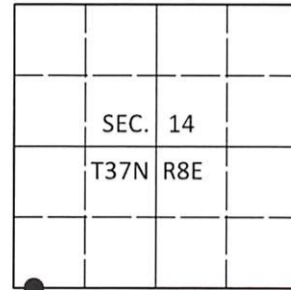
INDEX NO. N 11 18

# U.S. PUBLIC LAND SURVEY MONUMENT RECORD

Note: This form is intended and designed to fulfill all requirements of Wisconsin Administrative Code, Chapter A-E 7.08 U.S. Public Land Survey Monument Record (3)(a-i).

(a) CORNER LOCATION  
 Meander Cor. of Secs. 14 & 23  
 Township 37 North  
 Range 8 East of the 4th P.M.  
 Town of Newbold  
 County of Oneida

WISCRS - Oneida County  
 N: 183,380.45 USft  
 E: 249,436.41 USft  
 Datum: NAD 83(2011)  
 GNSS Method: RTN - Direct  
 GNSS Control: WISCORS VRS



(b) HISTORY OF ORIGINAL CORNER ESTABLISHMENT

Original Surveyor: \_\_\_\_\_ Original Accessories: \_\_\_\_\_  
 Date of Survey Commenced: \_\_\_\_\_ See previous monument record(s)  
 Completed: \_\_\_\_\_

(b)(f)(g)(h) Description of monument found at this corner and if it was accepted, state all evidence (material, testimonial, occupational, plats, records, other monuments) used as a basis for accepting. If not accepted or if nothing was found, state evidence used as basis for establishing location. If re-established through lost corner proportionate methods, indicate all monuments, distances and directions used to establish. Indicate type of monument and sign post found or set.

*This is a perpetuation of the following monument record(s) that comprise a complete history of the corner:*

*Mar. 25, 2002: USPLS Monument Record No. 3708140037 by William C. Rohde, PLS*

*Sep. 25, 2020: I found and accepted the record monument, a 2.4" diam. aluminum pipe with a 3.3" diam. Oneida Co. aluminum cap flush with the bog surface. The record bearing trees numbered 1, 3 and 4 are standing dead. I found or established accessories as shown below. I found a white vinyl sign post bearing South, 0.5 ft.*

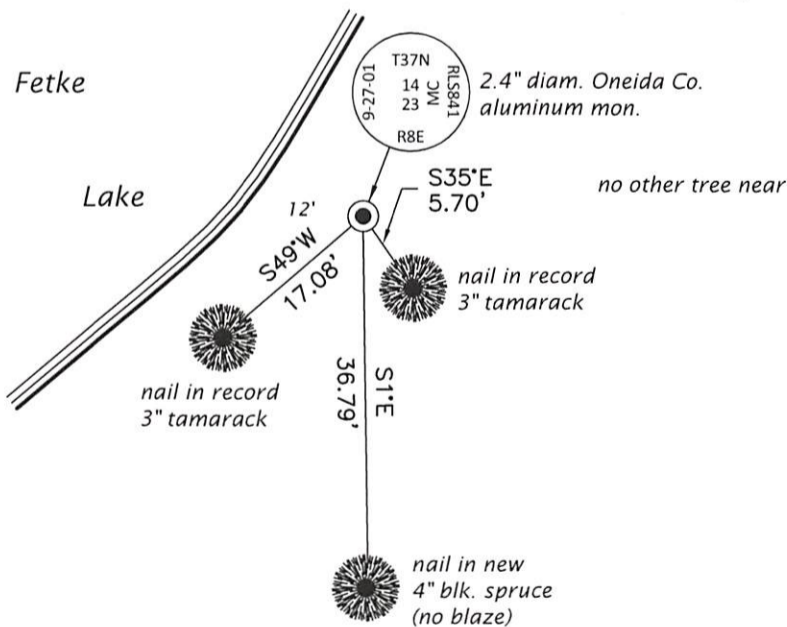
*The coordinate value shown has been verified by at least one of the following methods: 1) comparison to a previously GPS determined published value; 2) the value is the average of two or more GPS observations at a markedly different time; 3) one or more distances were measured back to the GPS observed corner from temporary GPS observed offset locations.*

REGISTER OF DEEDS OFFICE  
 ONEIDA COUNTY  
 FILED

JAN 13 2021

KYLE J. FRANSON  
 REGISTER OF DEEDS

(c)(d)(e) Plan view of corner with ties to at least 4 witness monuments. If in disagreement with previously established corner, show the distances between the two corners and also indicate the ties to the disputed.



(i) I, Jeffrey W. Austin, Professional Land Surveyor No. S-1885, hereby certify that the corner location on this record was determined by me or under my direction and control and that this U.S. Public Land Survey Monument Record is correct and complete to the best of my knowledge and belief.

\_\_\_\_\_  
 Signature Date 15 DEC 2020