

# U.S. PUBLIC LAND SURVEY MONUMENT RECORD

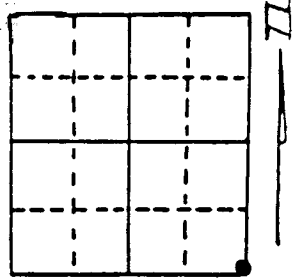
Note: This form is intended and designed to fulfill all requirements of Wisconsin Administrative Code, Chapter A-E 7.08 U.S. Public Land Survey Monument Record (3) (a) (b) (c) (d) (e) (f) (g) (h) (i). An additional sheet may be added if necessary to conform with said requirements.

(a) Corner location: Township 37 North

Range 8 East/West

Town/City/Village Pine Lake

County Oneida County

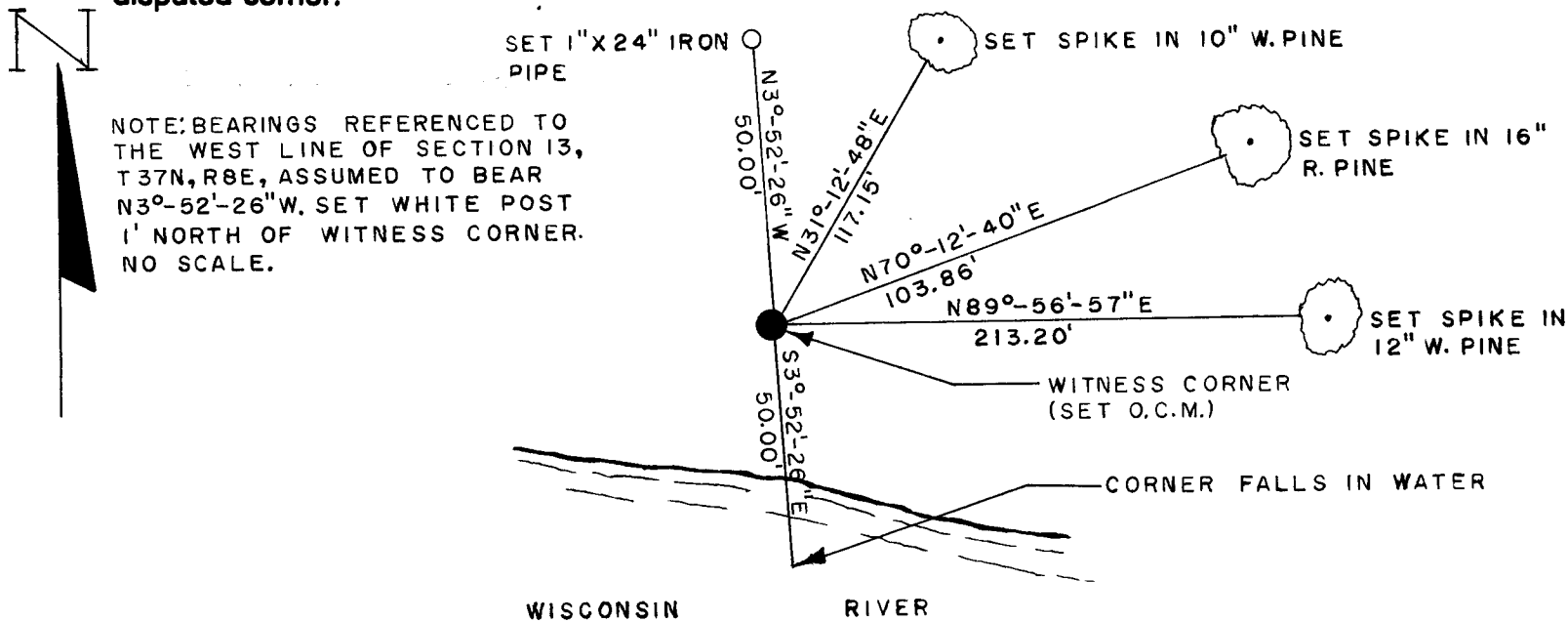


Section 14

(b) (f) (g) (h) Description of monument found at this corner and if it was accepted, state all evidence (material, testimonial, occupational, plats, records, other monuments) used as a basis for accepting. If not accepted or if nothing was found, state evidence used as basis for establishing location. If reestablished through lost corner proportionate methods, indicate all monuments, distances and directions used to establish. Indicate type of monument found or set and sign post.

1863-William Daugherty set post B.T.s are 10" Tamrack  
 S 86° W, 34 links 12" Tamrack N 55° W 23 links  
 1904-Vaughan measures .20.30 from E<sup>1</sup>/<sub>4</sub> corner South to 1/8 post  
 1993-William E. Bandow set corner at Vaughan's distance from  
 North and witnessed as shown below.

(c) (d) (e) Plan view of corner with ties to at least 4 witness monuments. If in disagreement with previously established corner, show the distances between the two corners and also indicate the ties to the disputed corner.



NOTE: BEARINGS REFERENCED TO THE WEST LINE OF SECTION 13, T37N, R8E, ASSUMED TO BEAR N3°-52'-26\"/>

(i) I, William E. Bandow  
 (type or print name) certify that the corner location on this record was determined by me or under my direction and control and that this U.S. Public Land Survey Monument Record is correct and complete to the best of my knowledge and belief.

William E. Bandow 12-29-93  
 Signature Date



Index No. N-21

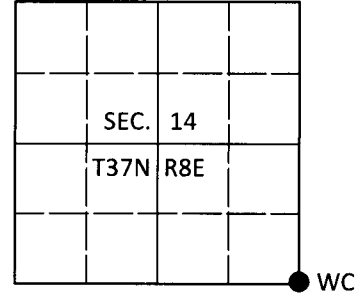
Stamp 0100  
 3708140000

# U.S. PUBLIC LAND SURVEY MONUMENT RECORD

Note: This form is intended and designed to fulfill all requirements of Wisconsin Administrative Code, Chapter A-E 7.08 U.S. Public Land Survey Monument Record (3)(a-i).

(a) CORNER LOCATION  
 Witness Cor. of Secs. 13 & 14  
 Township 37 North  
 Range 8 East of the 4th P.M.  
 Town of Pine Lake  
 County of Oneida

WISCRS - Oneida County  
 N: 183,512.60 USft  
 E: 254,460.90 USft  
 Datum: NAD 83(2011)  
 GNSS Method: RTN - Direct  
 GNSS Control: WISCORS VRS



(b) HISTORY OF ORIGINAL CORNER ESTABLISHMENT

Original Surveyor:

Original Accessories:

Date of Survey

Commenced:  
 Completed:

See previous monument record(s)

(b)(f)(g)(h) Description of monument found at this corner and if it was accepted, state all evidence (material, testimonial, occupational, plats, records, other monuments) used as a basis for accepting. If not accepted or if nothing was found, state evidence used as basis for establishing location. If re-established through lost corner proportionate methods, indicate all monuments, distances and directions used to establish. Indicate type of monument and sign post found or set.

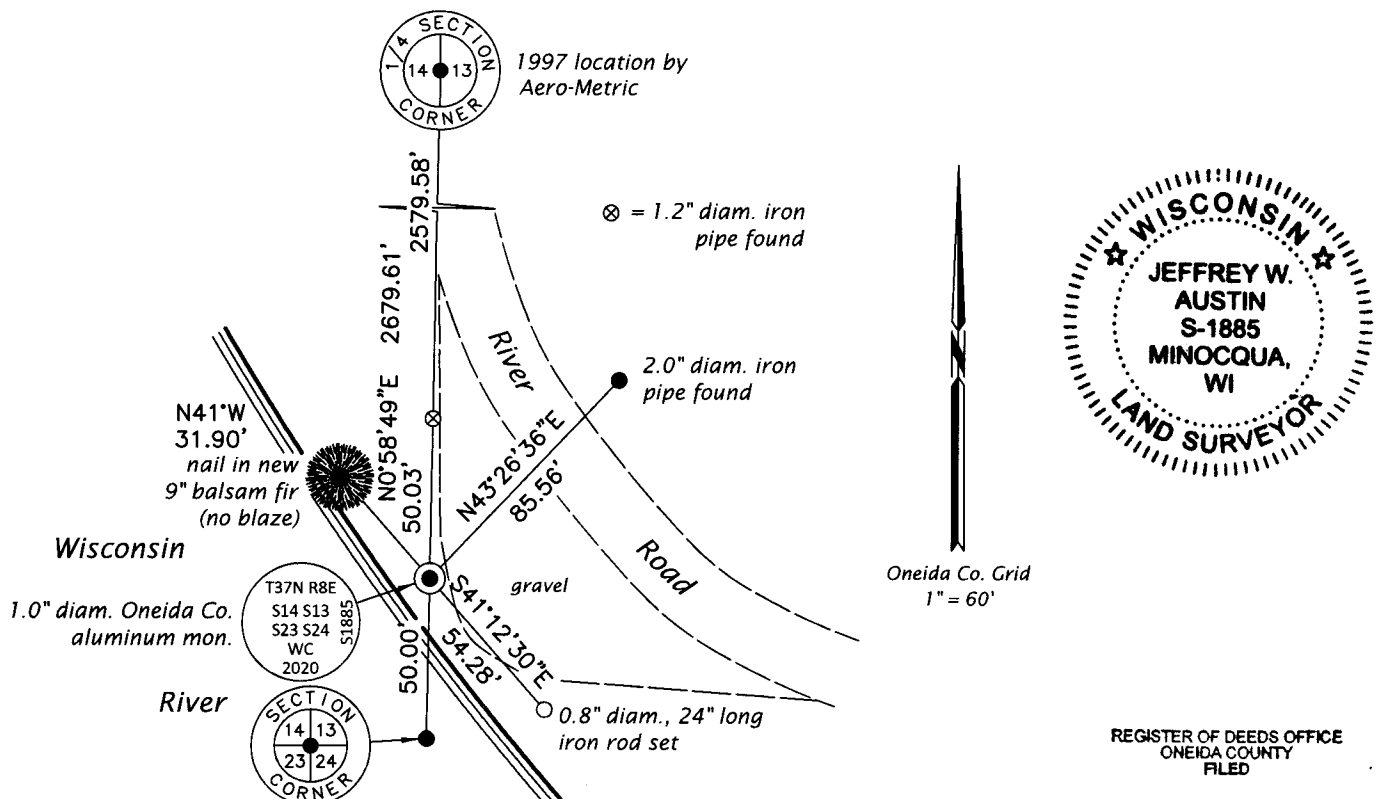
*This is a perpetuation of the following monument record(s) that comprise a complete history of the corner:*

*Dec. 27, 1993: USPLS Monument Record No. 3708140000 by William E. Bandow, PLS*

*June 17, 2020: I found and accepted the record monument, a 2.4" diam. aluminum pipe with a 3.3" diam. Oneida Co. aluminum cap. The monument was very loose as it was cut and only 15" long. In its place, I set a 1.0" diam., 30" long aluminum pipe with a 2.5" diam. Oneida Co. aluminum cap buried 6" beneath the ground surface. I set a blue DEEP-1 magnet adjacent to the monument. The record bearing trees appear to be in place, but I did not remeasure them. I found or established accessories as shown below. I set a white vinyl sign post bearing West, 0.7 ft.*

*The coordinate value shown has been verified by at least one of the following methods: 1) comparison to a previously GPS determined published value; 2) the value is the average of two or more GPS observations at a markedly different time; 3) one or more distances were measured back to the GPS observed corner from temporary GPS observed offset locations.*

(c)(d)(e) Plan view of corner with ties to at least 4 witness monuments. If in disagreement with previously established corner, show the distances between the two corners and also indicate the ties to the disputed.



(i) I, Jeffrey W. Austin, Professional Land Surveyor No. S-1885, hereby certify that the corner location on this record was determined by me or under my direction and control and that this U.S. Public Land Survey Monument Record is correct and complete to the best of my knowledge and belief.

SEP 08 2020

KYLE J. FRANSON  
 REGISTER OF DEEDS

*[Handwritten Signature]*  
 Signature

AUG. 27, 2020  
 Date