



# U.S. PUBLIC LAND SURVEY MONUMENT RECORD

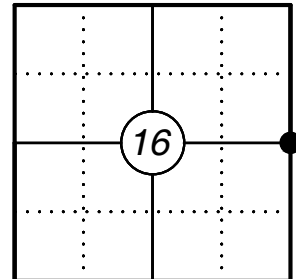
This form is intended and designed to fulfill all requirements of Wisconsin Administrative Code, Chapter A-E 7.08 U.S. Public Land Survey Monument Record (3) (a)(b)(c)(d)(e)(f)(g)(h)(i). An additional sheet may be added if necessary to confirm with said requirements.

Oneida County  
Land Information Office  
Filed  
12/19/2024

**(a) Corner Location:**

E 1/4 Corner Section 16  
Township 37 North  
Range 08 East  
Town of Newbold  
County of Oneida

Corner ID: 3708162000



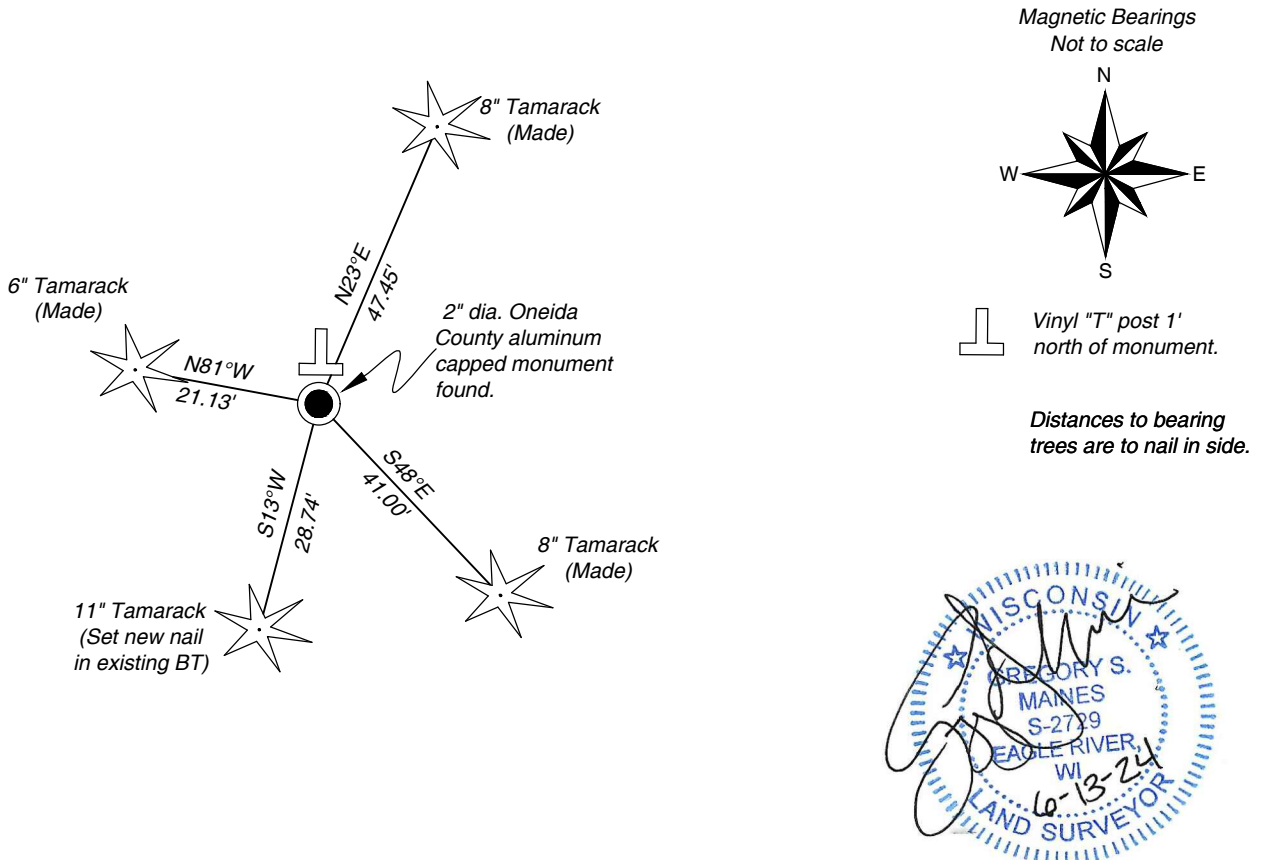
**(b) History of Original Corner:**

For corner history, see previous U.S. Public Land Survey Monument Record by Milo E Stefan dated February 24, 1988.

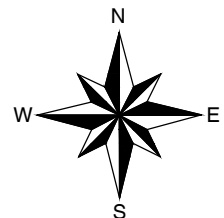
**(f)(g)(h) Description of monument found at this corner and if it was accepted, state all evidence (material, testimonial, occupational, plats, records, other monuments) used as a basis for establishing location. If reestablishing through lost corner proportionate methods, indicate all monuments, distances, and directions used to establish. Indicate type of monument and sign post found or set.**

04-21-2000 - I found and accepted a 2" capped Oneida County aluminum monument at the corner location in a Tamarack wetland and three dead and one live bearing tree, I made three new bearing trees to witness the corner as shown below.

**(c)(d)(e) Plan view of corner with ties to at least four witnesses. If in disagreement with previously established corner, show the distances between the two corners and also indicate the tie to the disputed corner.**

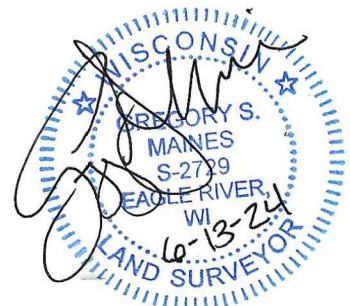


Magnetic Bearings  
Not to scale



Vinyl "T" post 1' north of monument.

Distances to bearing trees are to nail in side.



**Certification**

I, Gregory S. Maines, Professional Land Surveyor No. 2729, hereby certify that the corner location on this record was referenced by me or under my direction and control and that this U.S. Public Land Survey Monument Record is complete to the best of my knowledge and belief. REF: 2020041